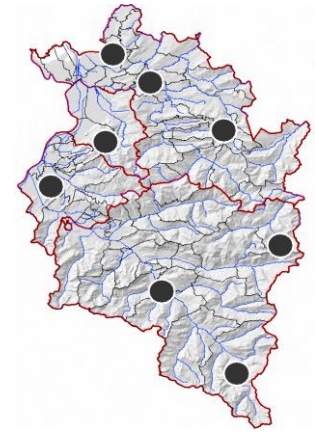
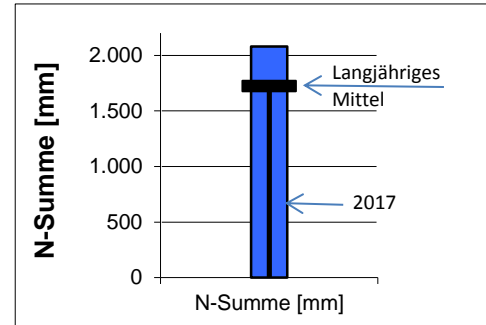


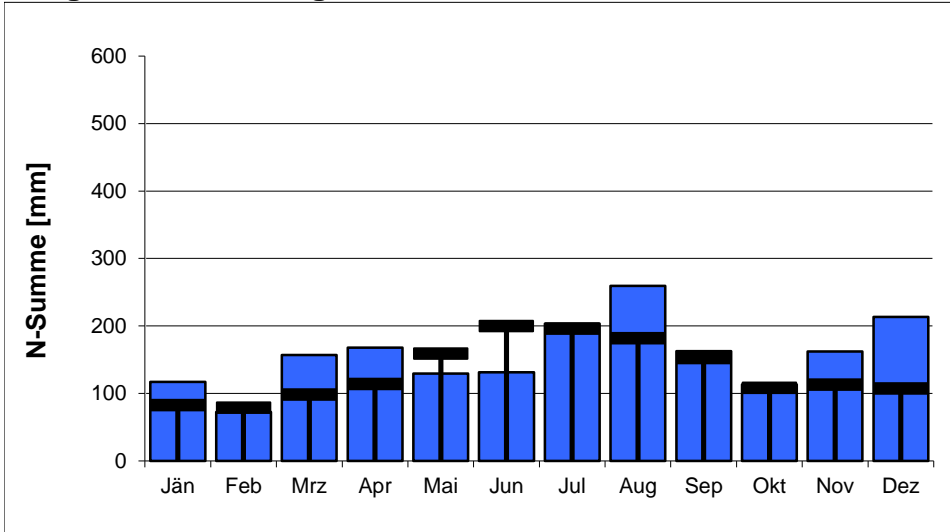
- Anlage 1: Niederschlag
- Anlage 2: Oberflächengewässer, Abfluss
- Anlage 3: Bodenseewasserstand und –temperatur
- Anlage 4: Grundwasser – Quantität
- Anlage 5: Grundwasser – Qualität

Station	Summe 2017 [mm]	Langjähriges Mittel (LM)	Abweichung gegenüber LM	N-Tage 2017
Bregenz Altreuteweg	1.890	1.588	+19 %	190
Alberschwende	2.430	1.879	+29 %	198
Schönenbach	2.631	2.231	+18 %	208
Ebnit	2.688	2.176	+24 %	216
Feldkirch	1.474	1.251	+18 %	191
Zürs	1.951	1.624	+20 %	210
Rodund	1.542	1.273	+21 %	190
Vermunt	2.045	1.754	+17 %	213
Mittelwerte 2017	2.081	1.722	+21 %	202

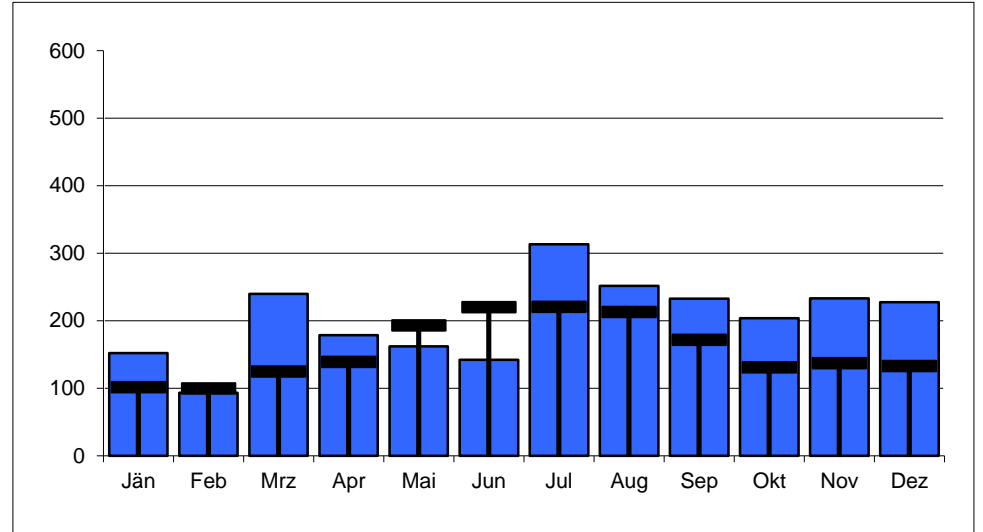
mittlere Jahressumme 2017 und langjähriges Mittel



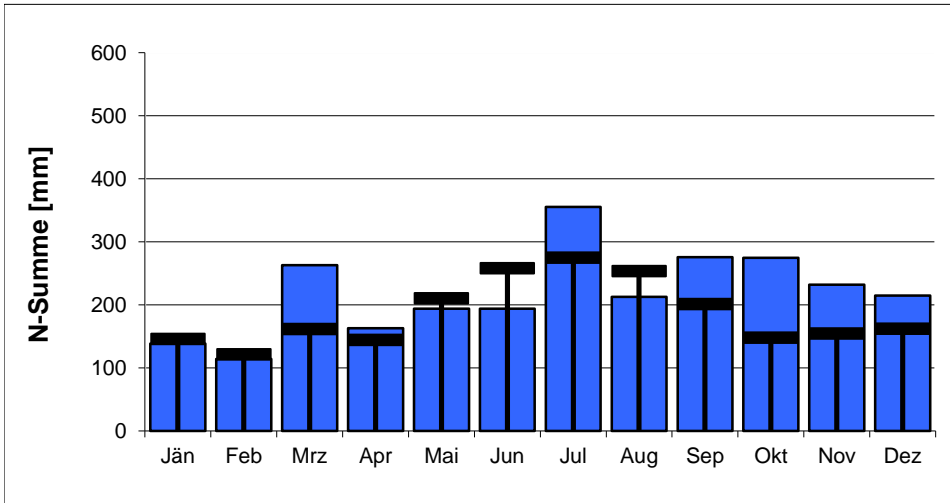
**Bregenz Altreuteweg 100776**



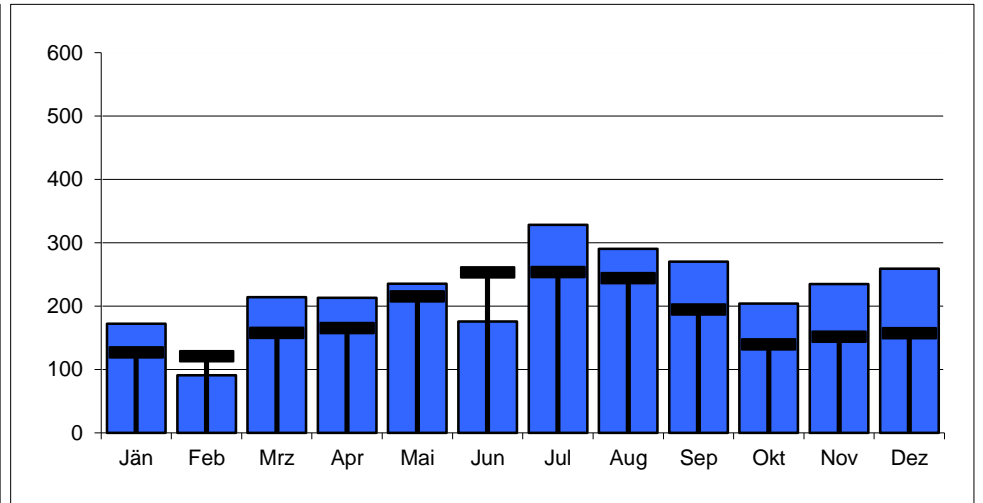
**Alberschwende 100842**



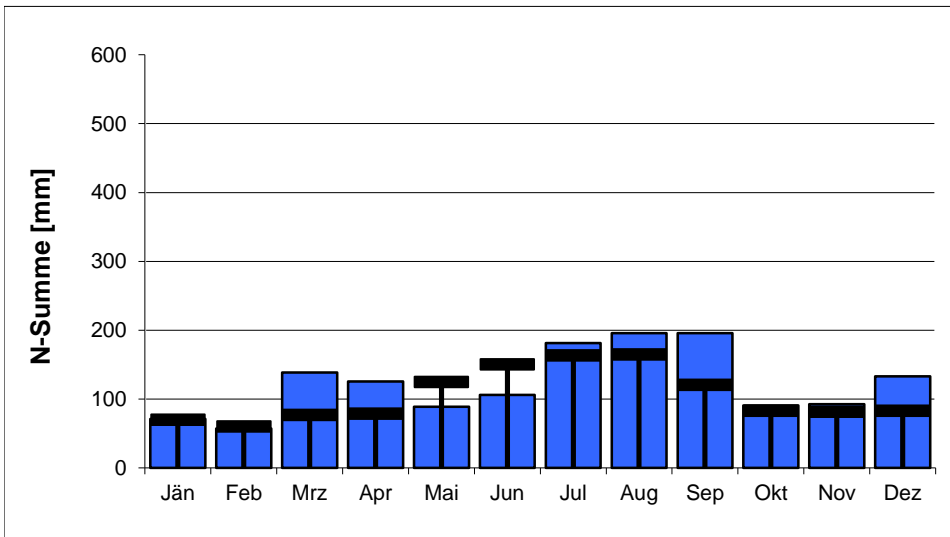
**Schönenbach 100651**



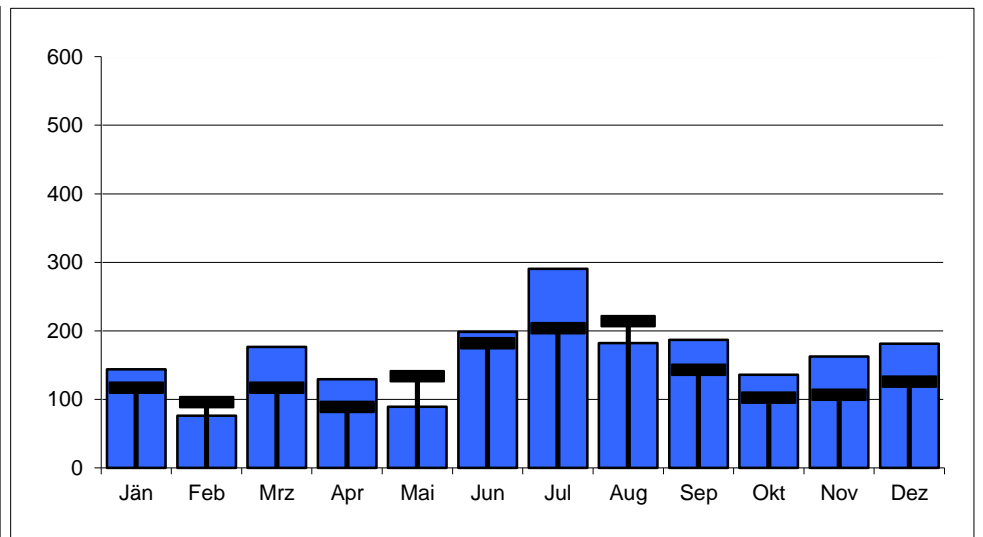
**Ebnit 100453**



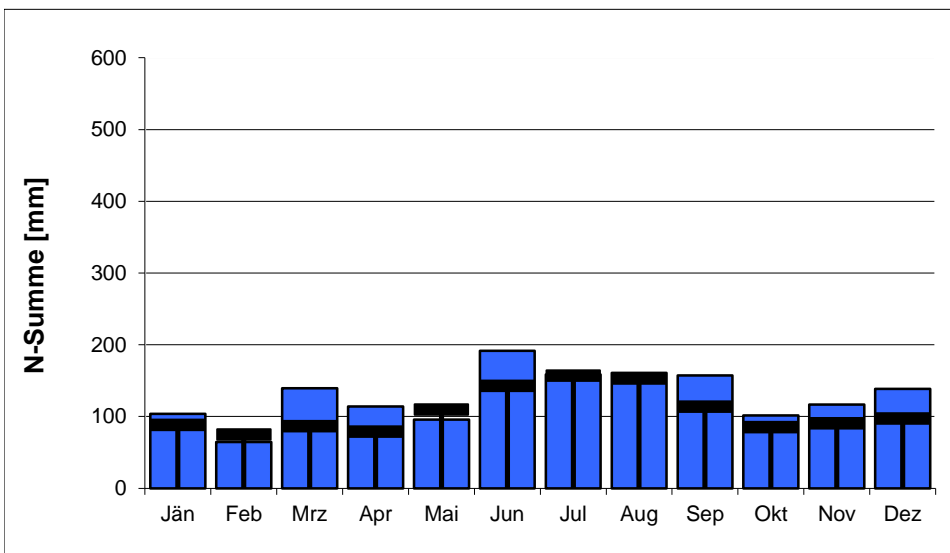
**Feldkirch 100396**



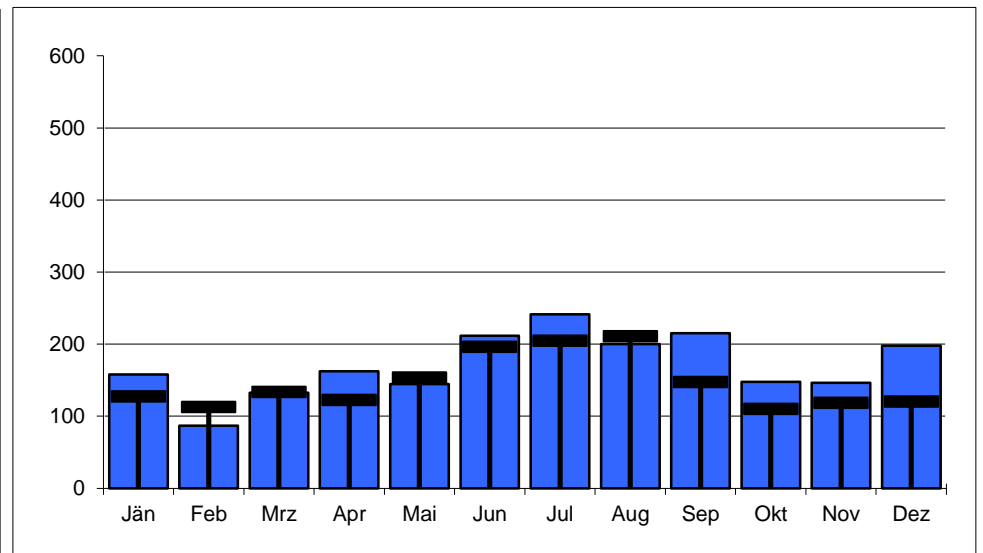
**Zürs 101113**



**Rodund 100230**

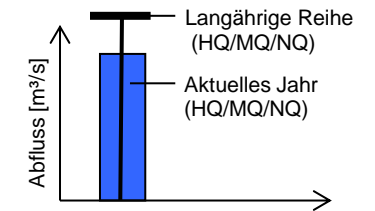


**Vermunt 100073**

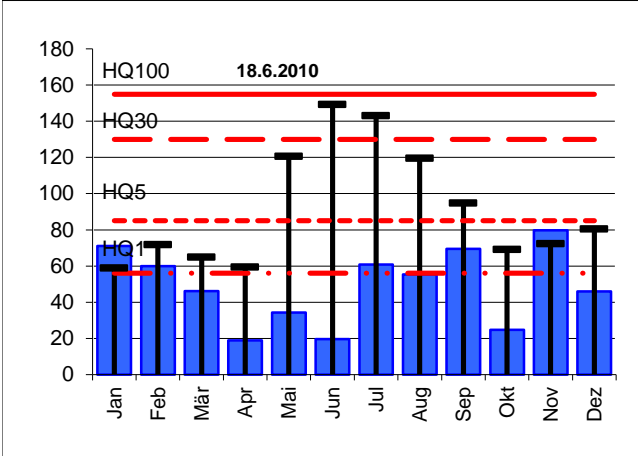


Station	Reihe	Langjährige Reihen [m³/s]						Werte 2017 [m³/s]			Abweichung [%] von langjähriger Reihe		
		NQ	MQ	HQ1	HQ5	HQ30	HQ100	NQ	MQ	HQ	NQ	MQ	HQ100
Leiblach, Unterhochsteg	1976-2016	0,030	3,17	56	85	130	155	0,064	4,24	79,7	+113%	+34%	-49%
Bregenzerach, Kennelbach	1951-2016	1,07	46,5	480	750	1.100	1.450	4,87	53,8	651	+355%	+16%	-55%
Dornbirnerach, Lauterach	1984-2016	0,238	7,06	120	180	270	325	0,677	8,30	146	+184%	+18%	-55%
Rhein, Lustenau	1951-2016	31,7	231	1180	1.800	2.600	3.100	45,8	213	1.188	+44%	-8%	-62%
Ill, Gisingen	1951-2016	3,58	65,3	240	405	590	820	7,19	63,1	280	+101%	-3%	-66%

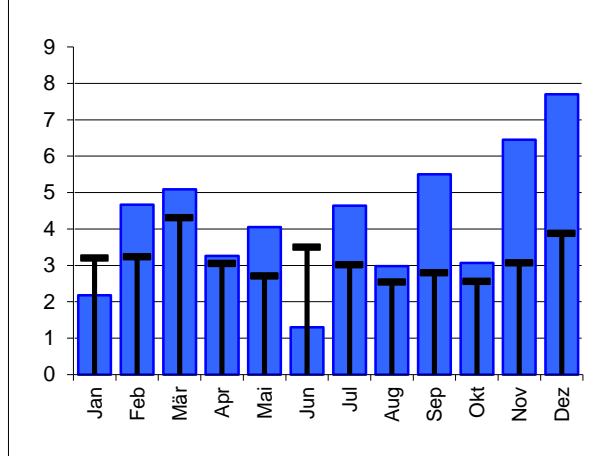
Legende zu den Diagrammen



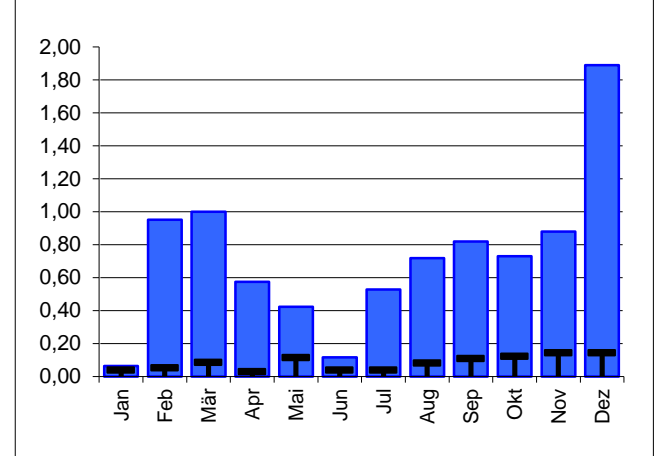
**Leiblach, Unterhochsteg HQ**



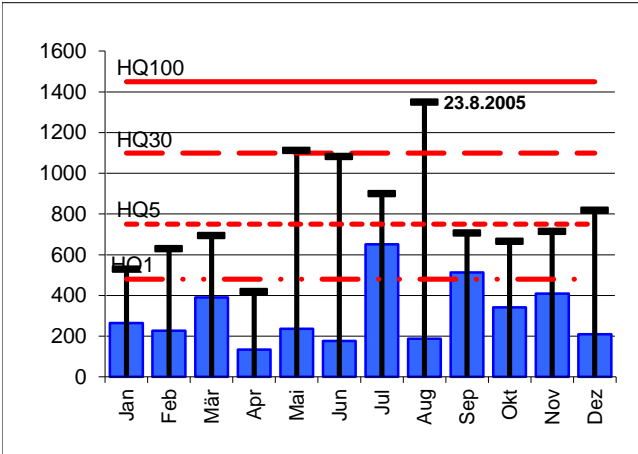
**MQ**



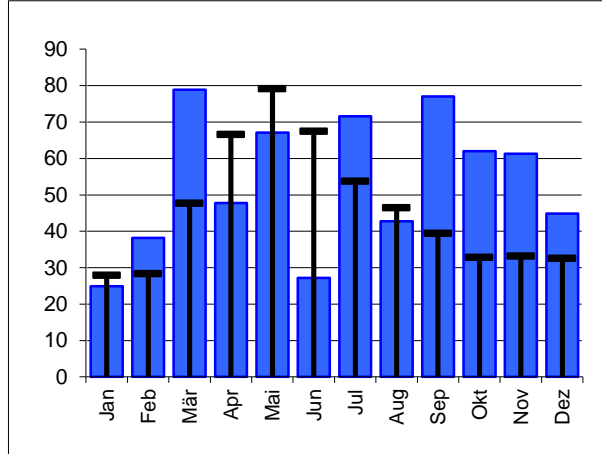
**NQ**



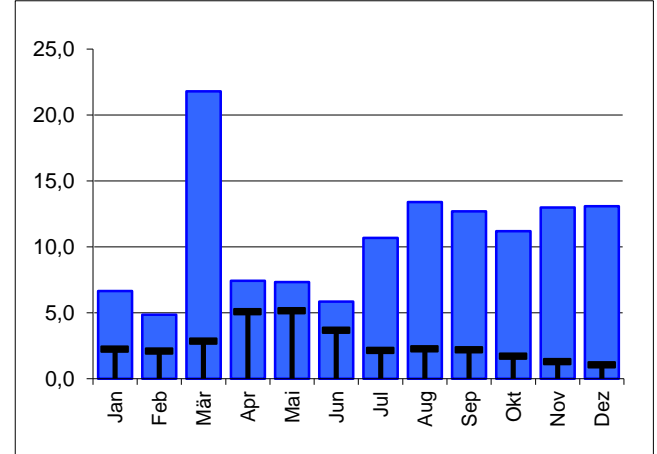
**Bregenzerach, Kennelbach HQ**



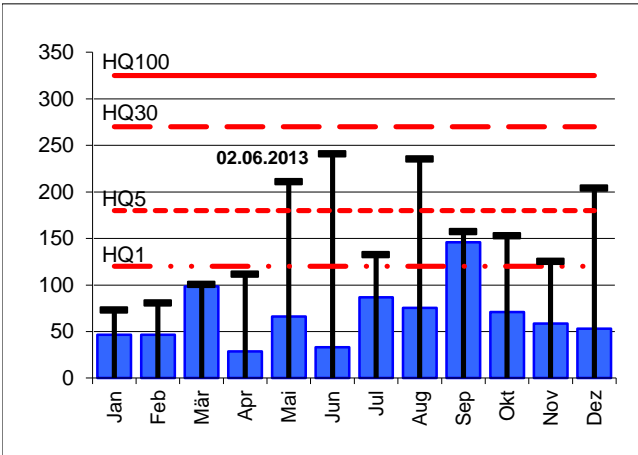
**MQ**



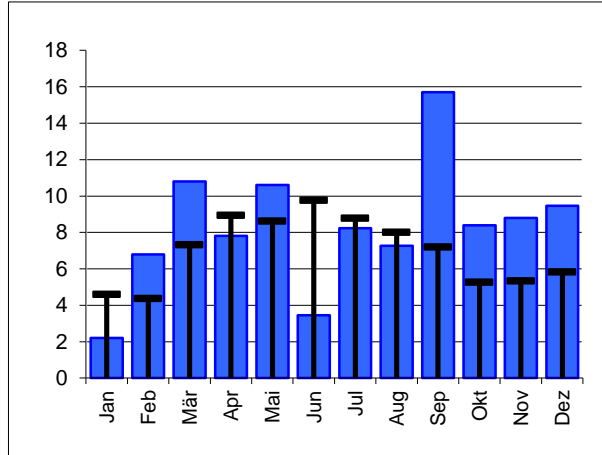
**NQ**



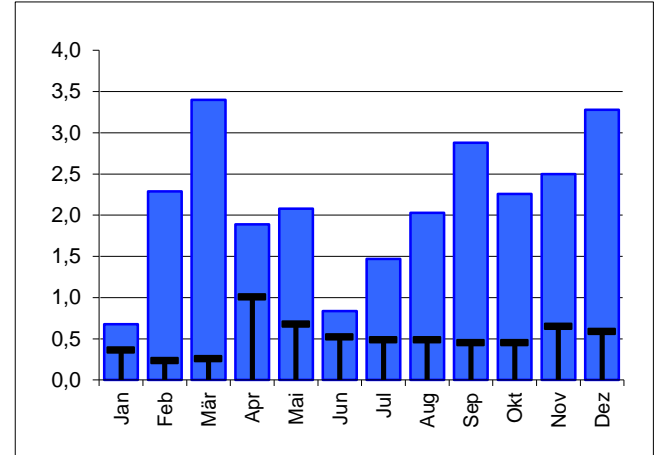
**Dornbirnerach, Lauterach HQ**



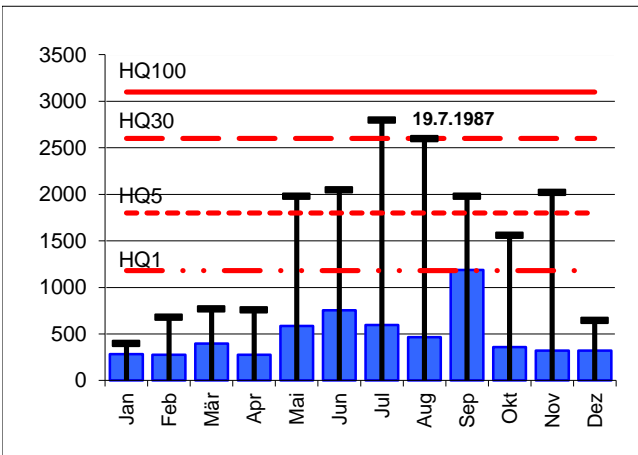
**MQ**



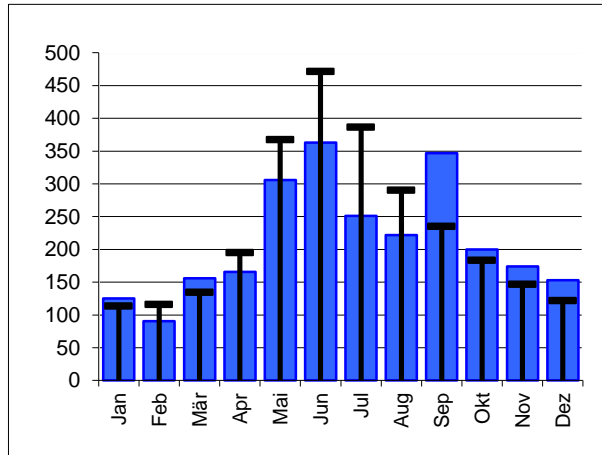
**NQ**



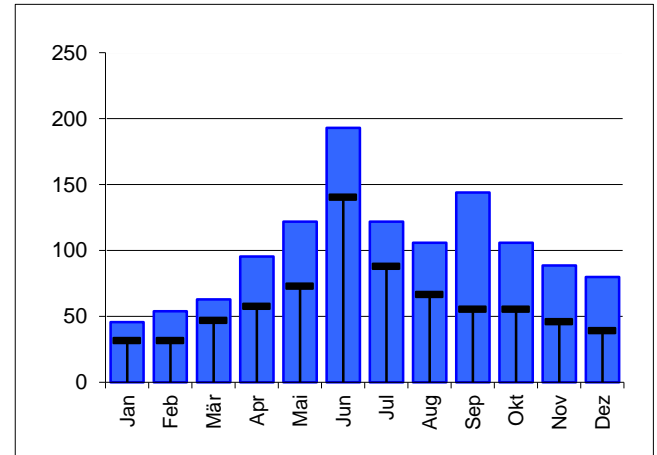
**Rhein, Lustenau HQ**



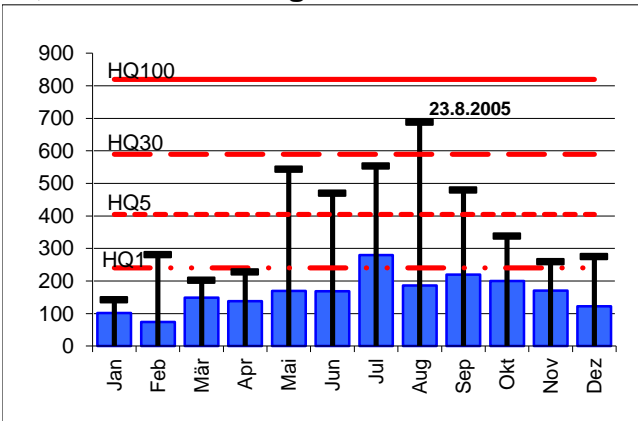
**MQ**



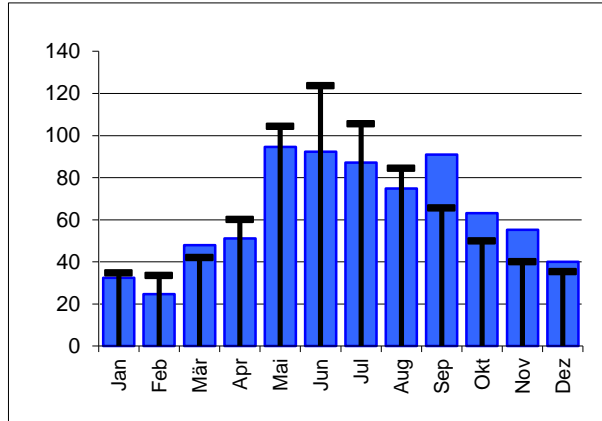
**NQ**



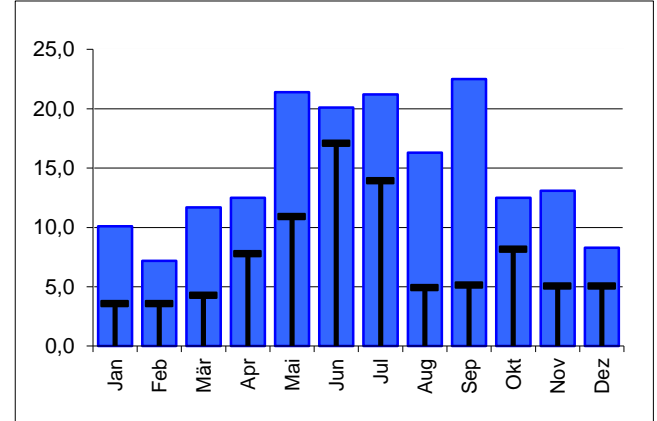
**Ill, Feldkirch-Gisingen HQ**



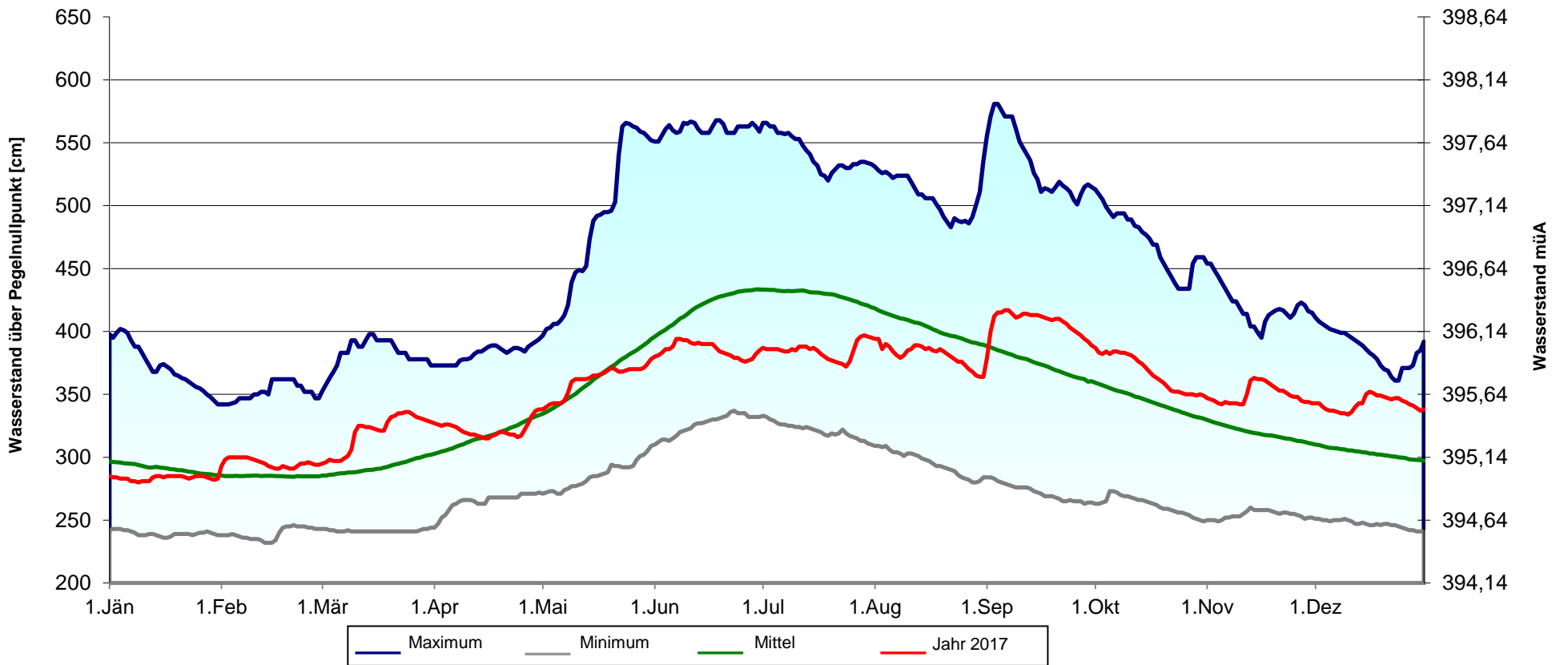
**MQ**



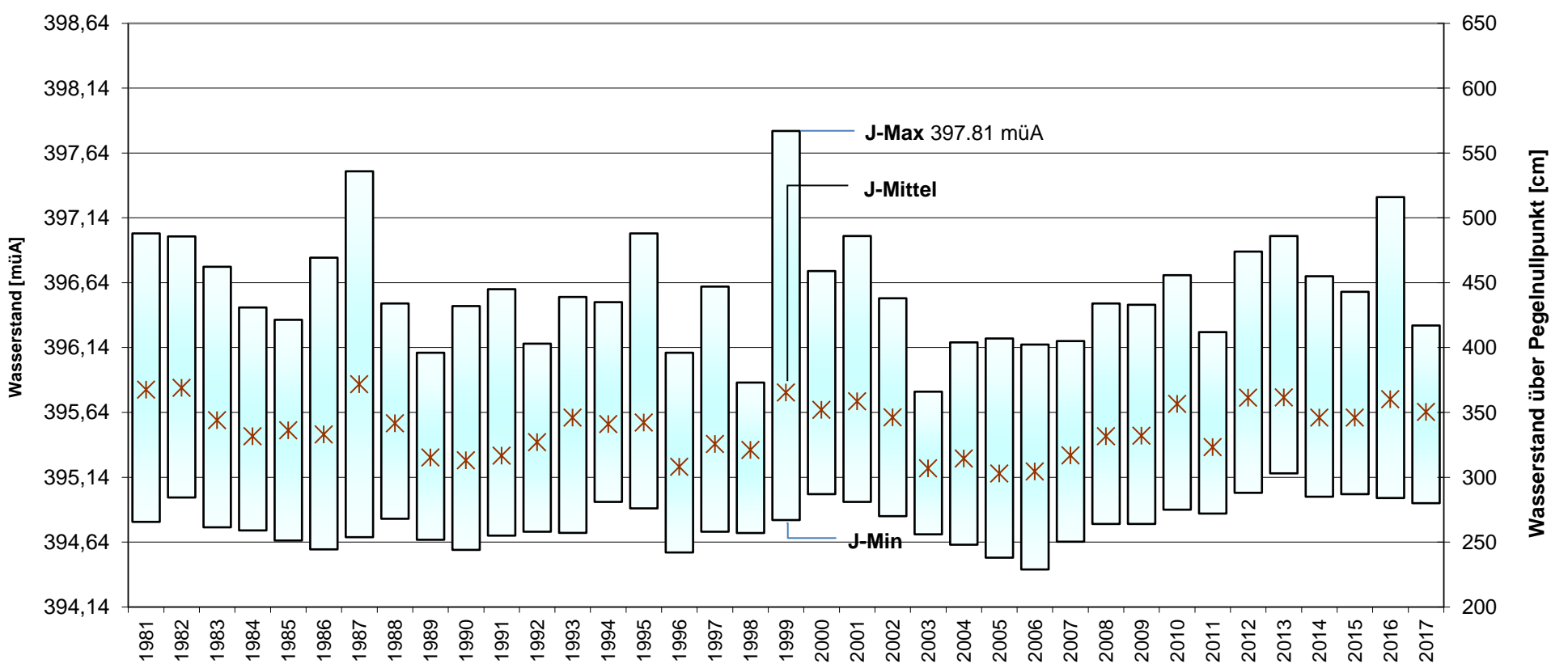
**NQ**



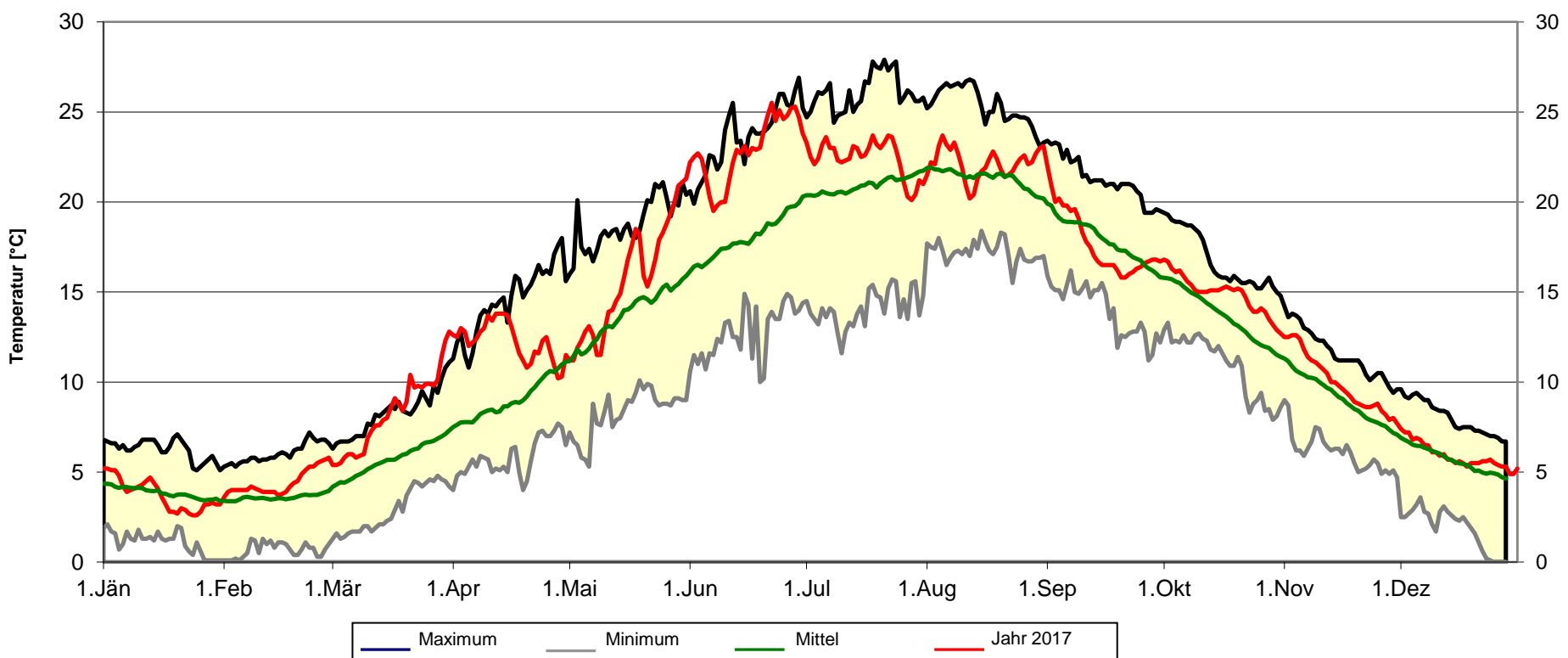
Wasserstandsbewegung von 1864 - 2017 (154 Jahre) - Pegelnullpunkt: 392,14 m. ü. Adria



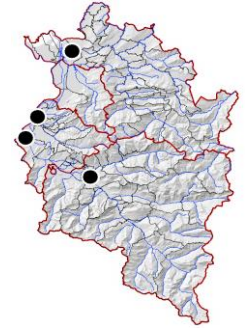
Wasserstandsbewegung von 1981 bis 2017 (Jahresminimum -maximum und -mittelwert)



Wassertemperatur im Tagesmittel (Messpunkt 50 cm unter Wasser)  
Extremwerte und Mittel von 1979 - 2016 (38 Jahre)

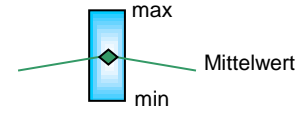


# Grundwasser-Quantität

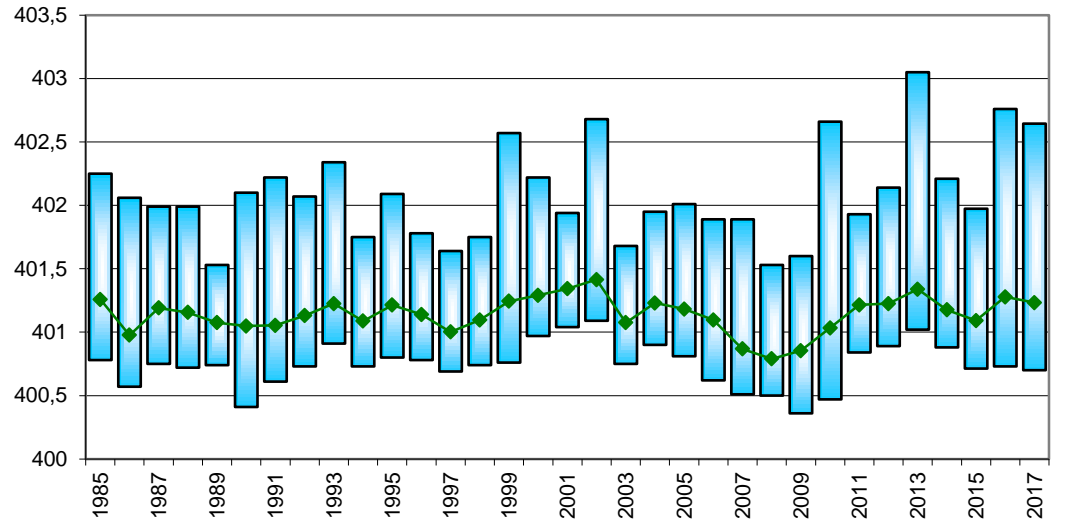
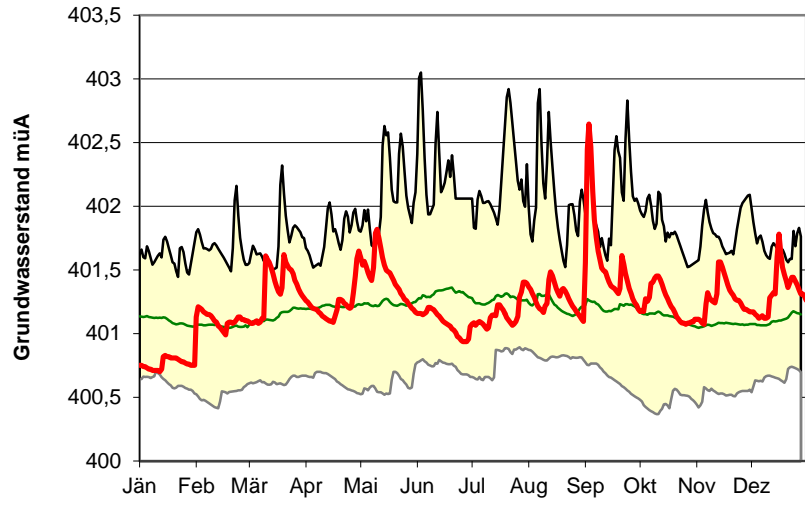


Verlauf Grundwasserstand 2017 mit Min-, Max und Mittelwerten über die gesamte Beobachtungsdauer

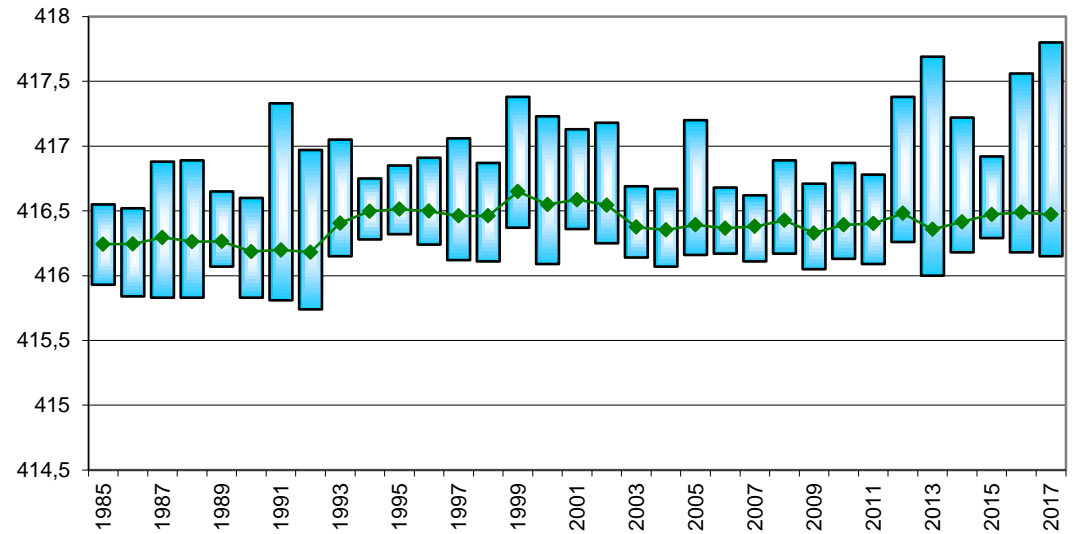
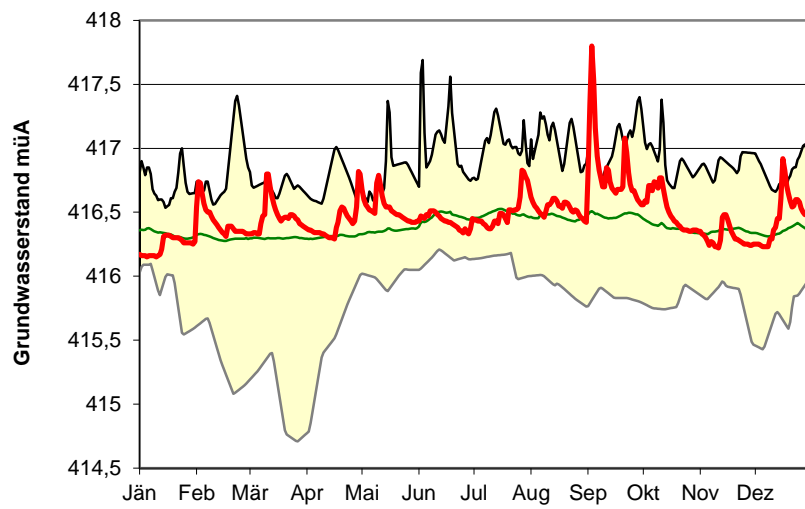
Langjährige Reihe (n=32)



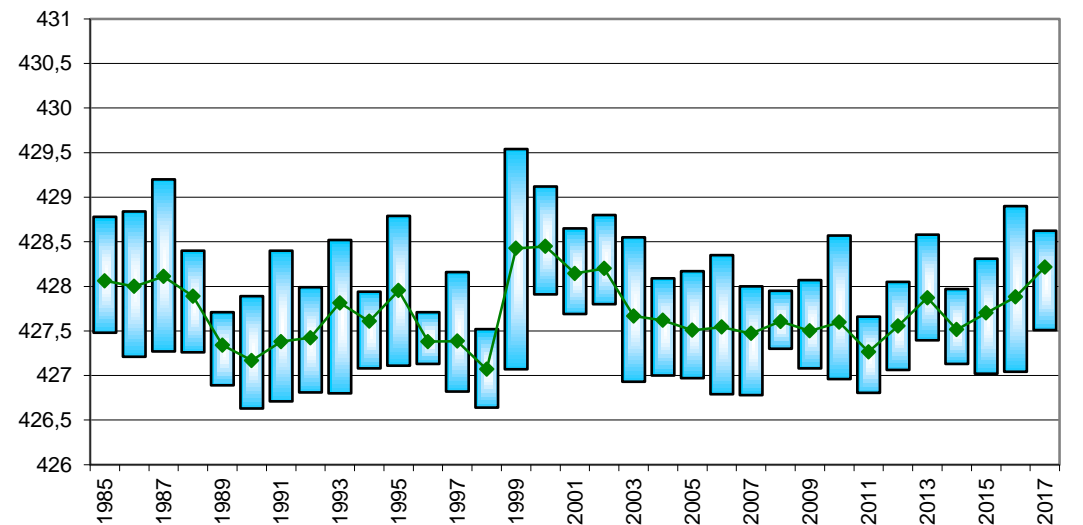
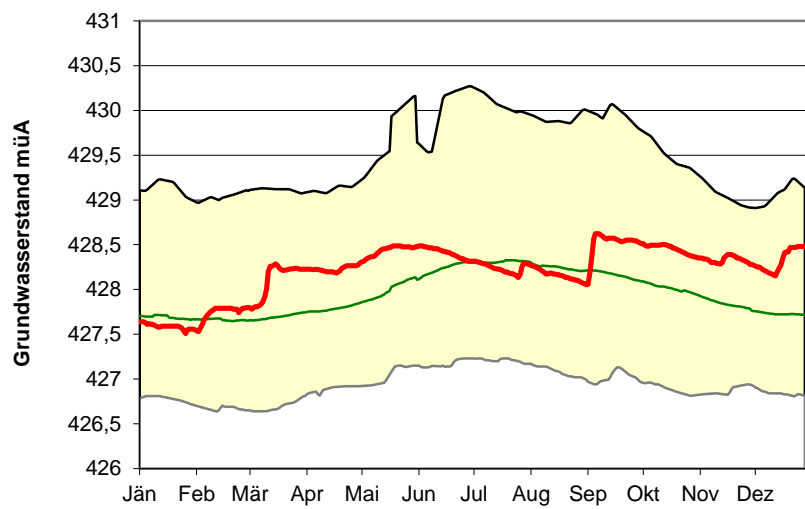
**Lauterach 50.2.10 (GOK = 403,42 müA)**



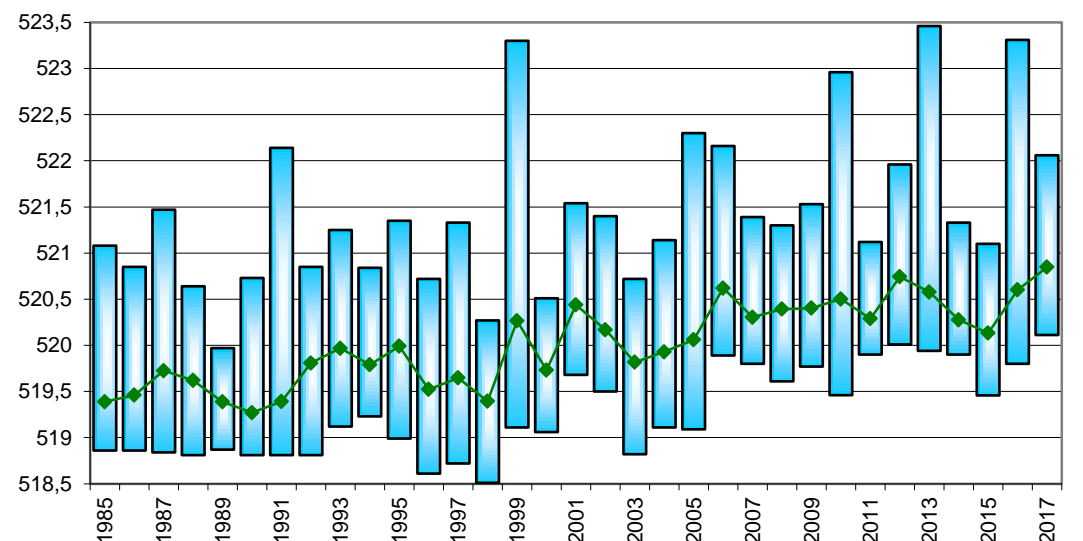
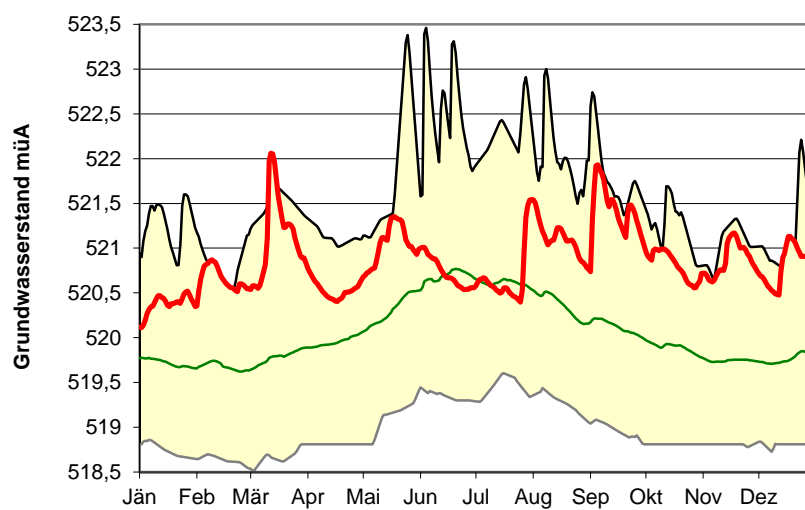
**Koblach 50.4.03A (GOK = 418,49 müA)**



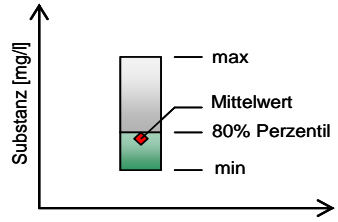
**Feldkirch Nofels 01.32.24 A (GOK = 433,00 müA)**



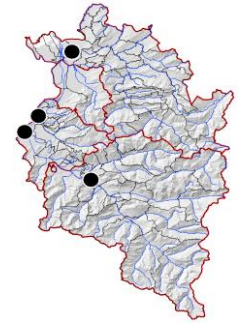
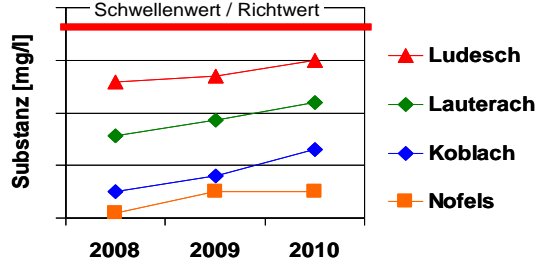
**Ludesch 06.36.08 (GOK = 542,57 müA)**



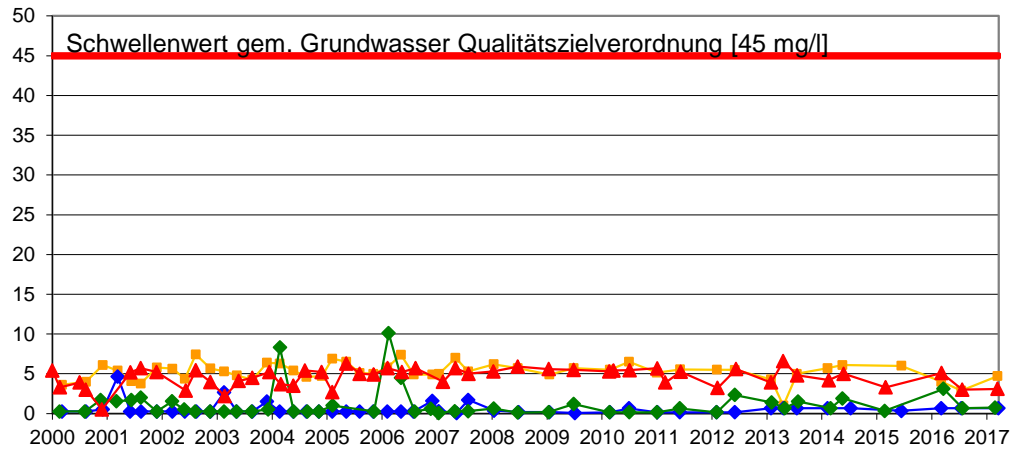
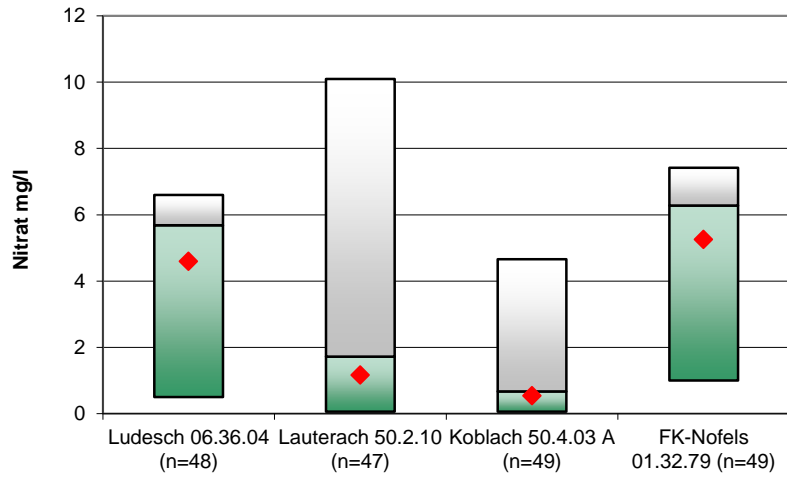
## Qualitätsuntersuchungen im Rahmen der GZÜV ab 2000



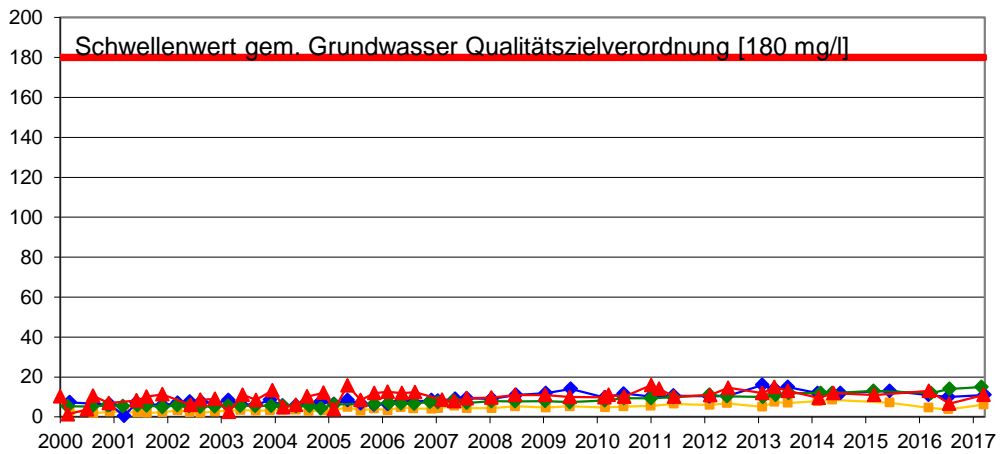
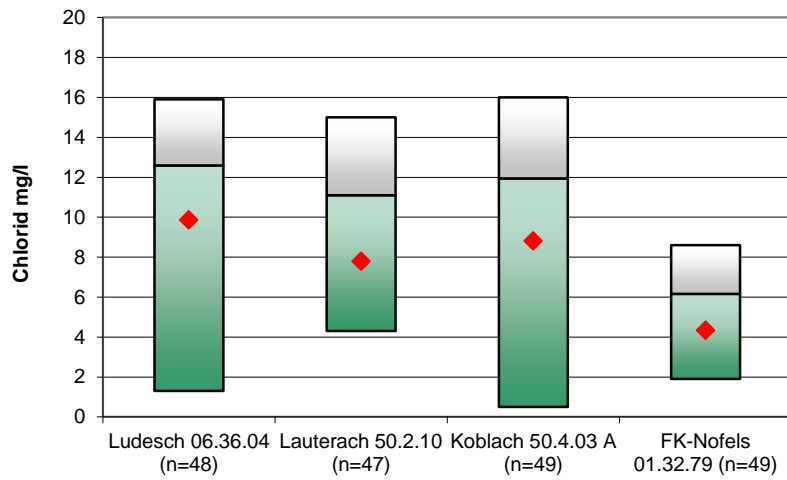
## Verlauf der gemessenen Werte ab 2000



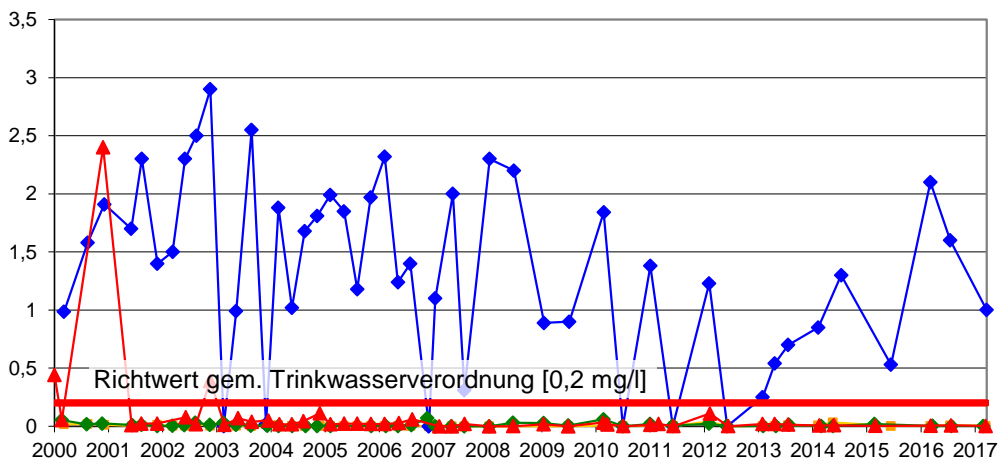
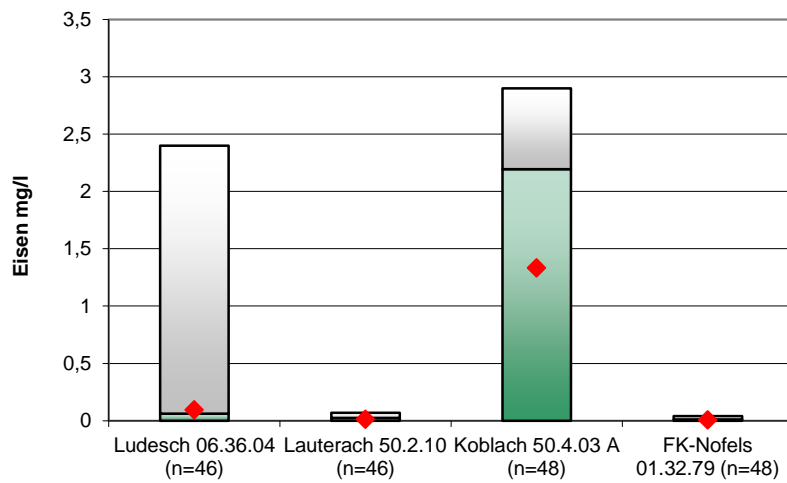
### Nitrat



### Chlorid



### Eisen



### Mangan

