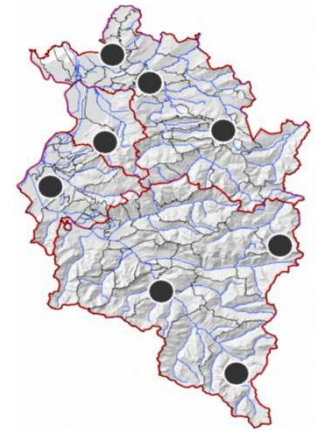
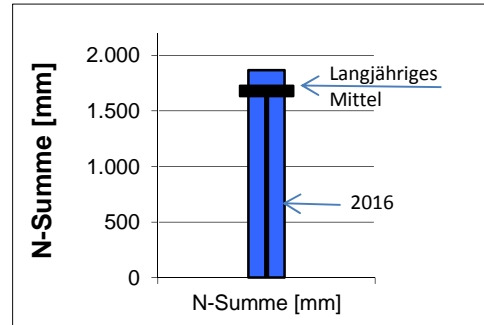


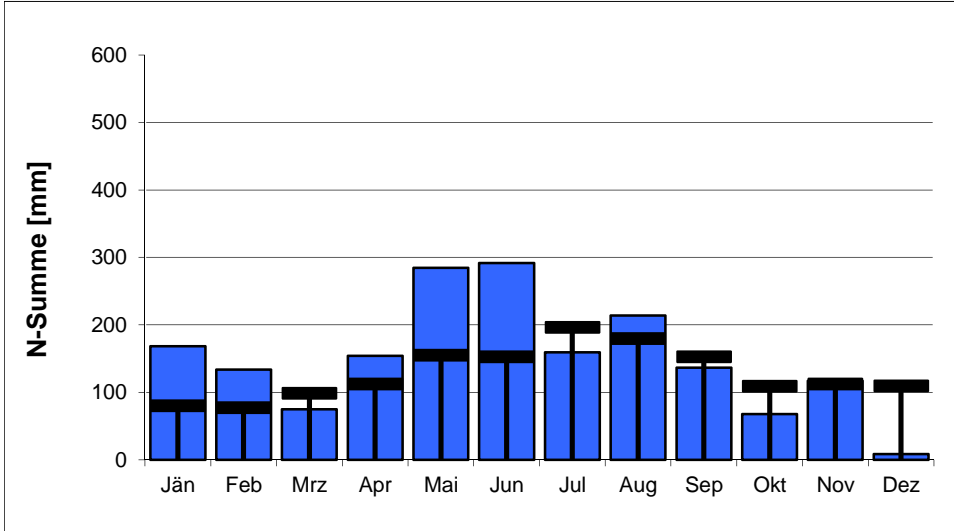
- Anlage 1: Niederschlag
- Anlage 2: Oberflächengewässer, Abfluss
- Anlage 3: Bodenseewasserstand und –temperatur
- Anlage 4: Grundwasser – Quantität
- Anlage 5: Grundwasser – Qualität

Station	Summe 2016 [mm]	Langjähriges Mittel (LM)	Abweichung gegenüber LM	N-Tage 2016
Bregenz Altreuteweg	1.811	1.534	+18 %	182
Alberschwende	2.031	1.845	+10 %	185
Schönenbach	2.450	2.174	+13 %	185
Ebnit	2.528	2.110	+20 %	200
Feldkirch	1.459	1.219	+20 %	194
Zürs	1.638	1.586	+3 %	203
Rodund	1.232	1.245	-1 %	182
Vermunt	1.796	1.707	+5 %	202
Mittelwerte 2016	1.868	1.678	+11 %	192

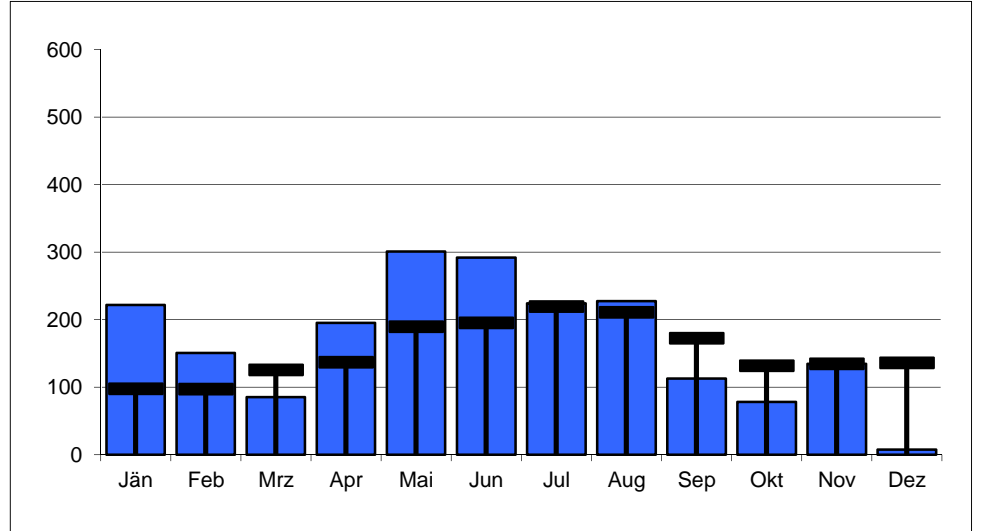
mittlere Jahressumme 2016 und langjähriges Mittel



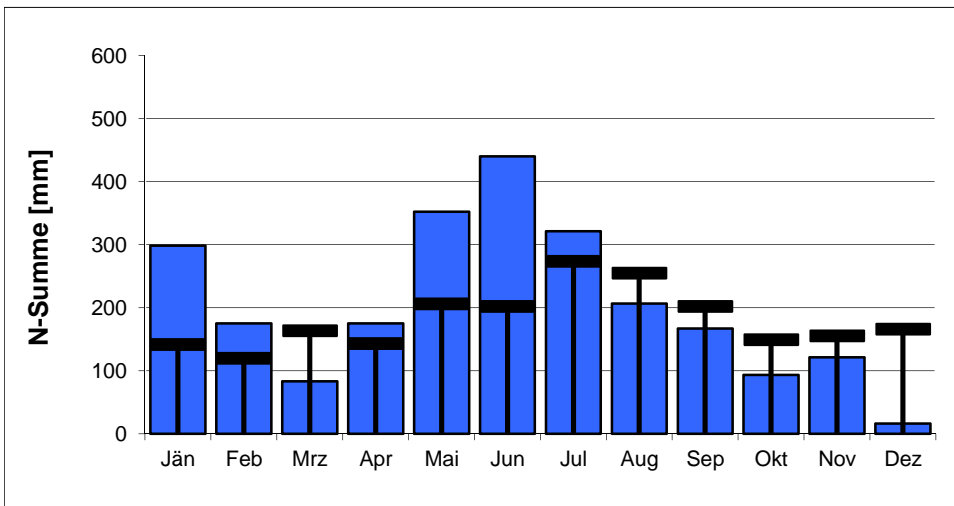
Bregenz Altreuteweg 100776



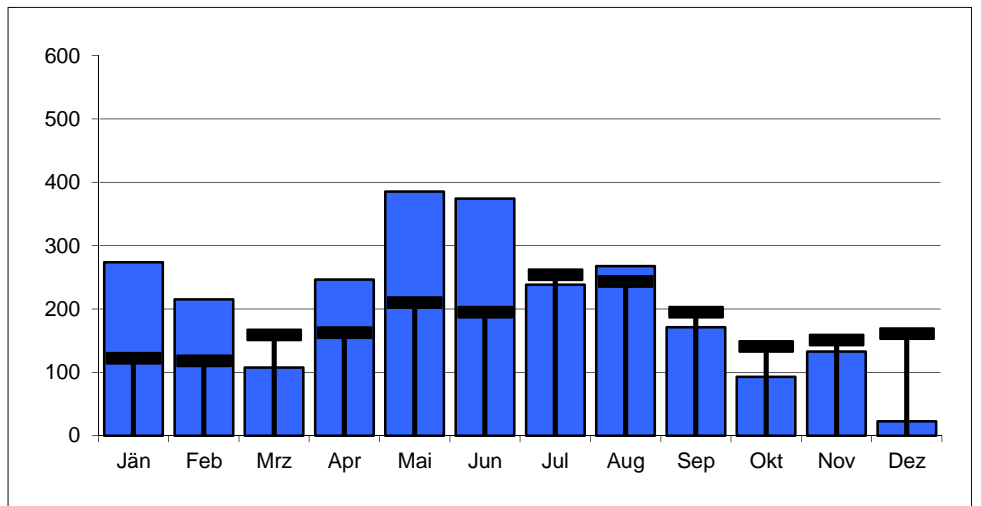
Alberschwende 100842



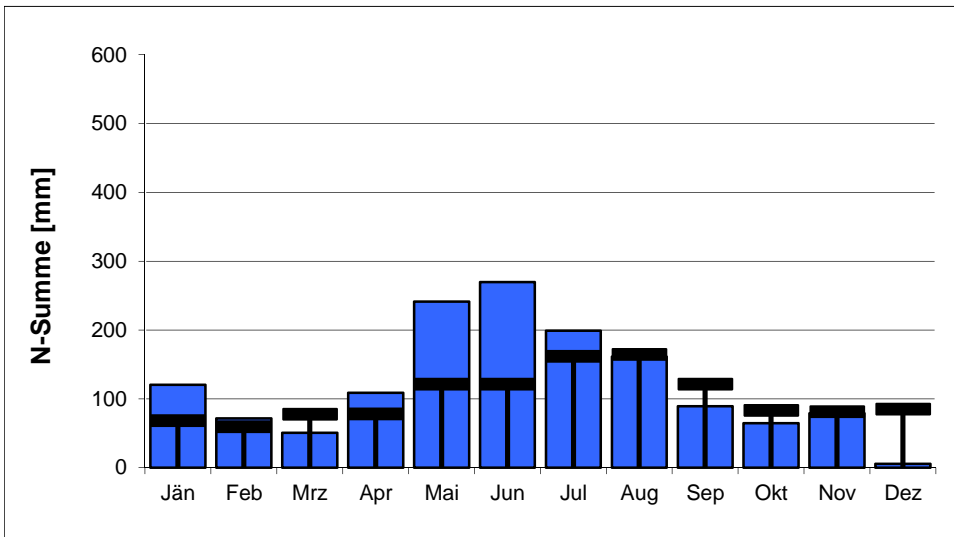
Schönenbach 100651



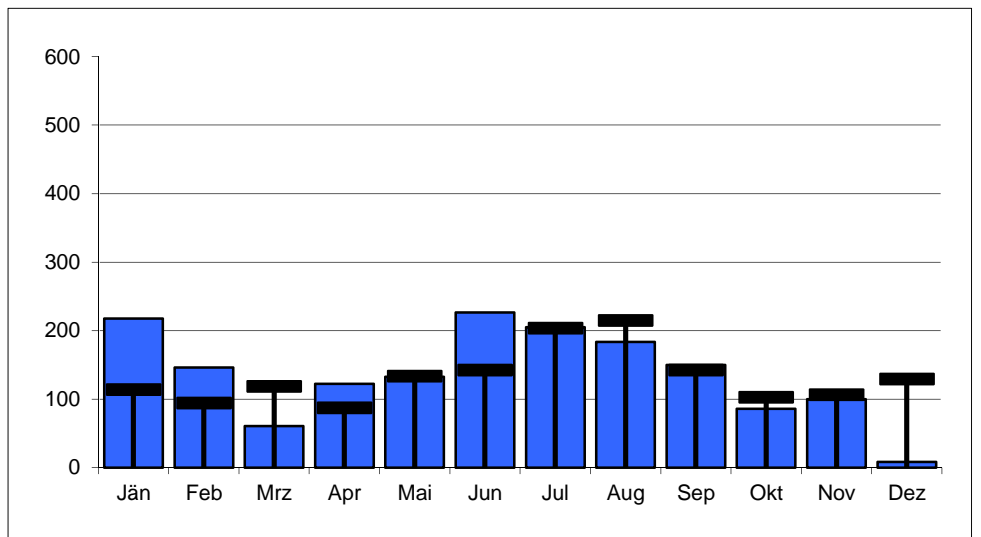
Ebnit 100453



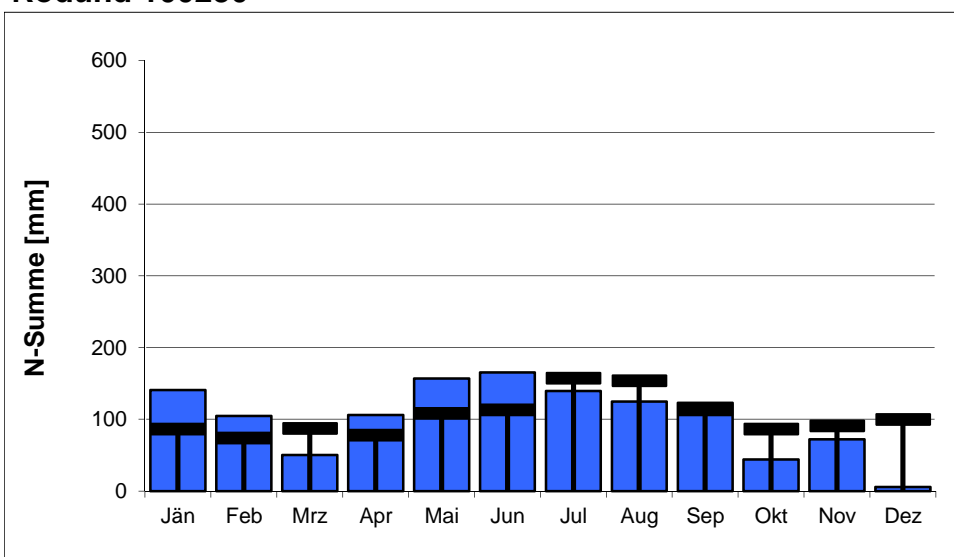
Feldkirch 100396



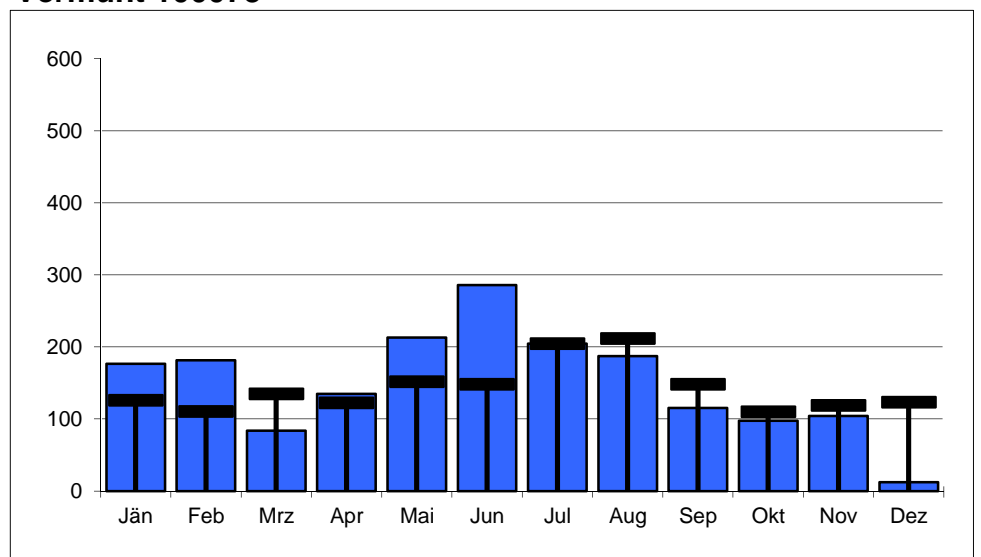
Zürs 101113



Rodund 100230

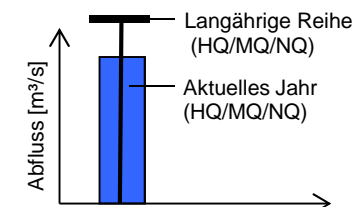


Vermunt 100073



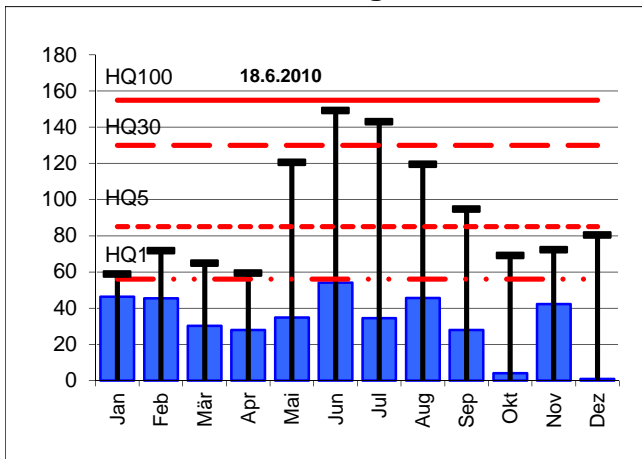
Station	Reihe	Langjährige Reihen [m³/s]						Werte 2016 [m³/s]			Abweichung [%] von langjähriger Reihe		
		NQ	MQ	HQ1	HQ5	HQ30	HQ100	NQ	MQ	HQ	NQ	MQ	HQ100
Leiblach, Unterhochsteg	1976-2015	0,030	3,16	56	85	130	155	0,259	3,81	54	+763%	+21%	-65%
Bregenzerach, Kennelbach	1951-2015	1,07	46,4	480	750	1.100	1.450	4,96	51,5	510	+364%	+11%	-65%
Dornbirnerach, Lauterach	1984-2015	0,238	7,02	120	180	270	325	0,838	8,07	149	+252%	+15%	-54%
Rhein, Lustenau	1951-2015	32	231	1180	1.800	2.600	3.100	44,2	231	2.223	+39%	0%	-28%
Ill, Gisingen	1951-2015	3,58	65,2	240	405	590	820	7,41	71,8	386	+107%	+10%	-53%

Legende zu den Diagrammen

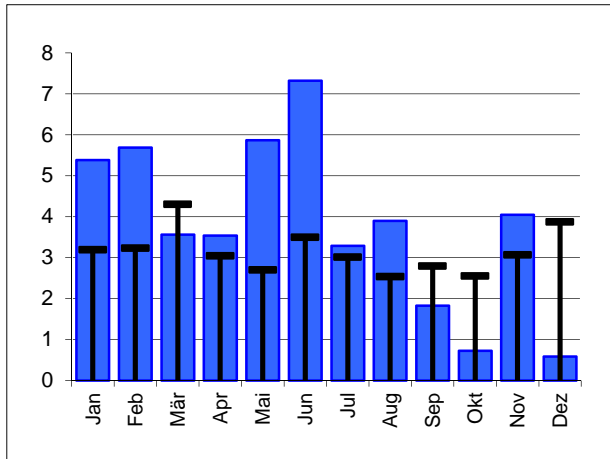


Leiblach, Unterhochsteg

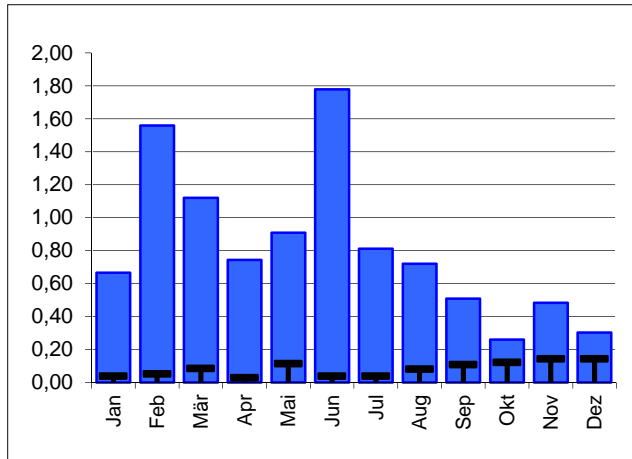
HQ



MQ

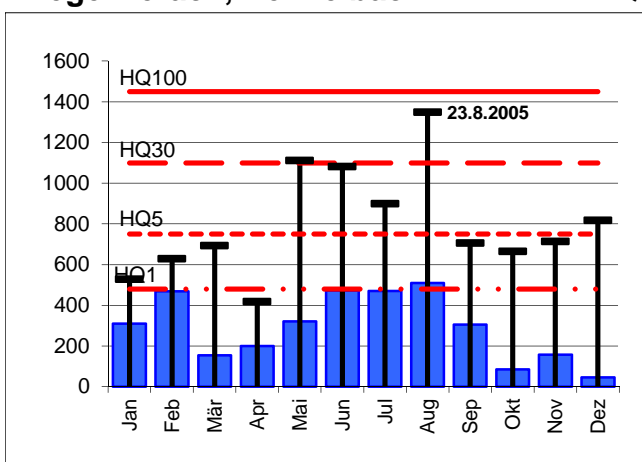


NQ

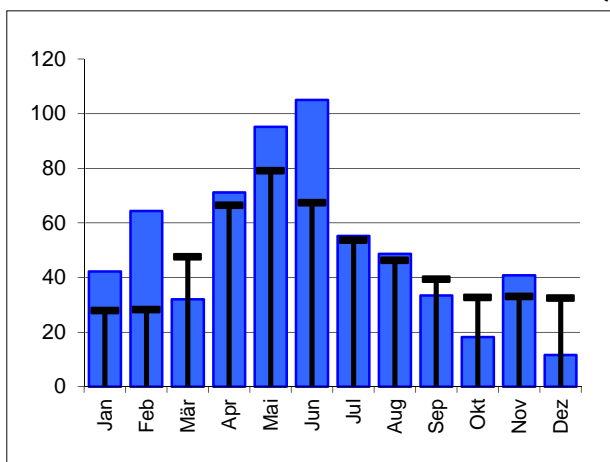


Bregenzerach, Kennelbach

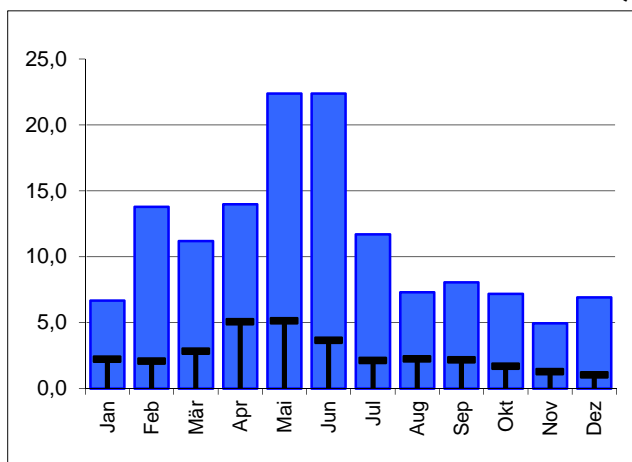
HQ



MQ

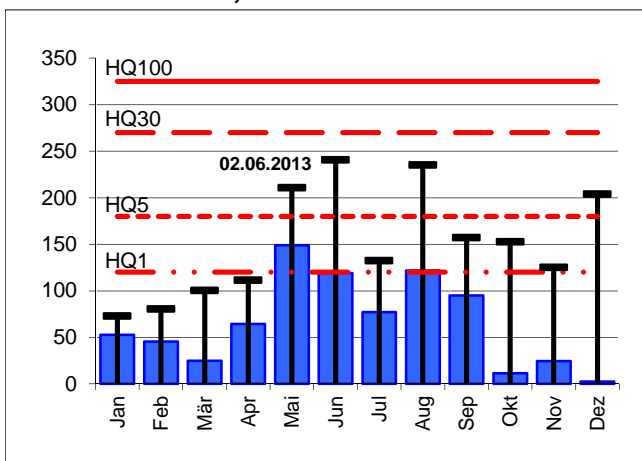


NQ

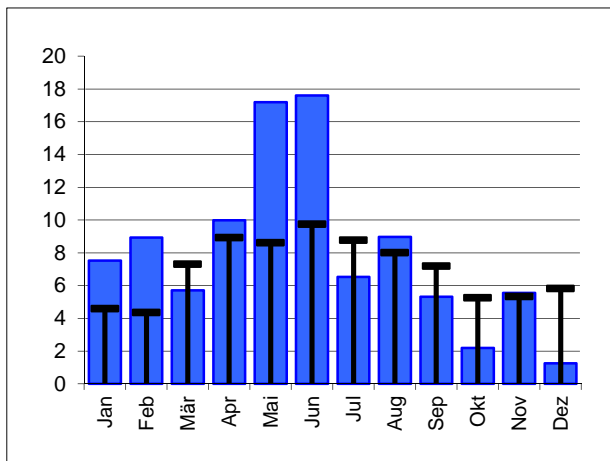


Dornbirnerach, Lauterach

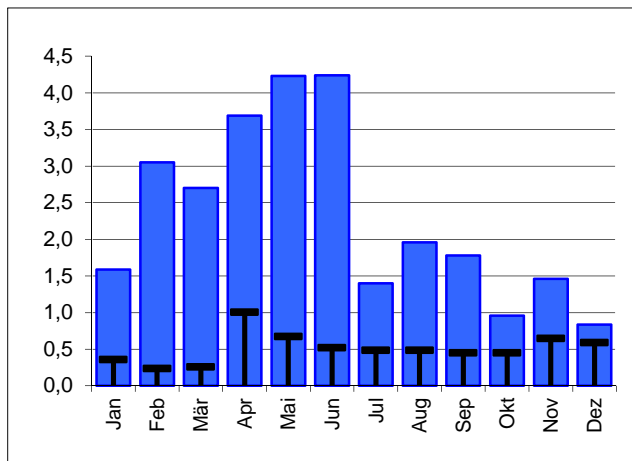
HQ



MQ

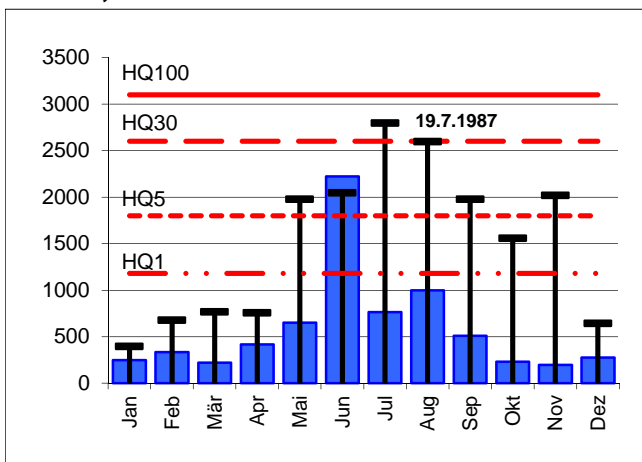


NQ

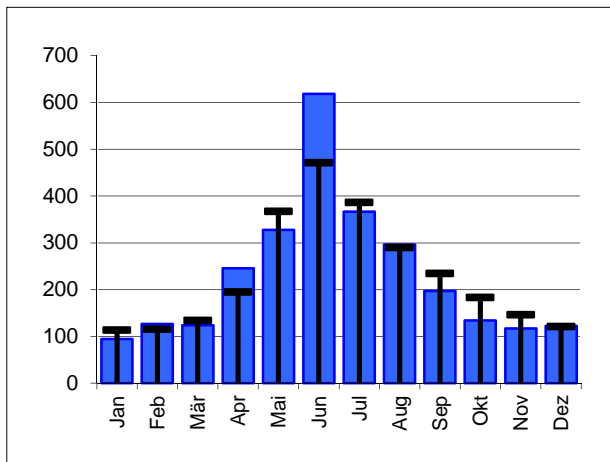


Rhein, Lustenau

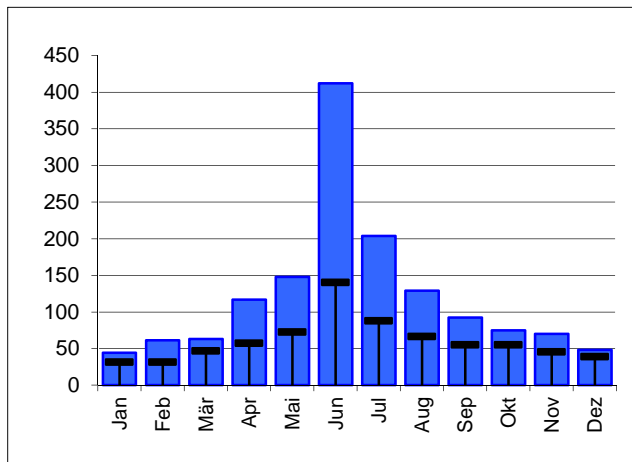
HQ



MQ

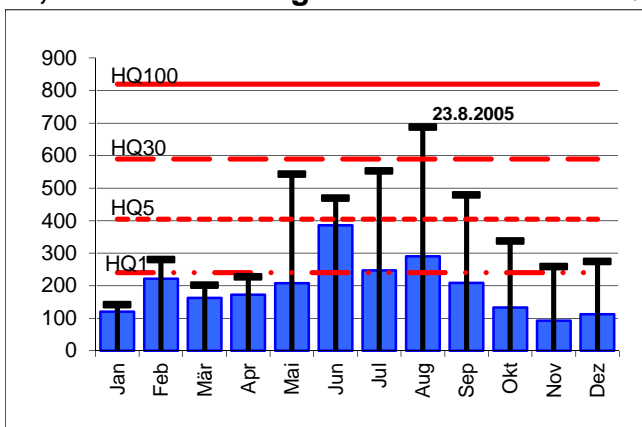


NQ

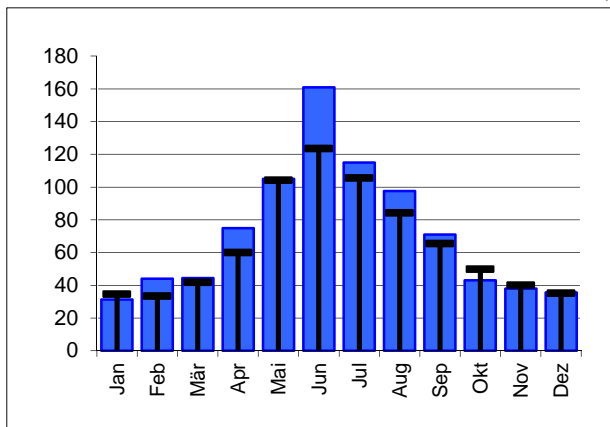


Ill, Feldkirch-Gisingen

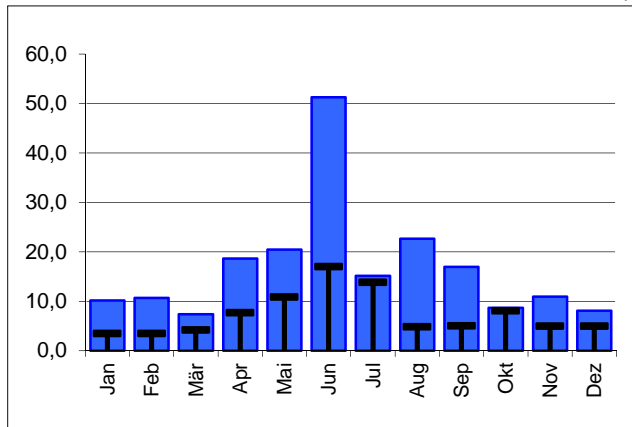
HQ



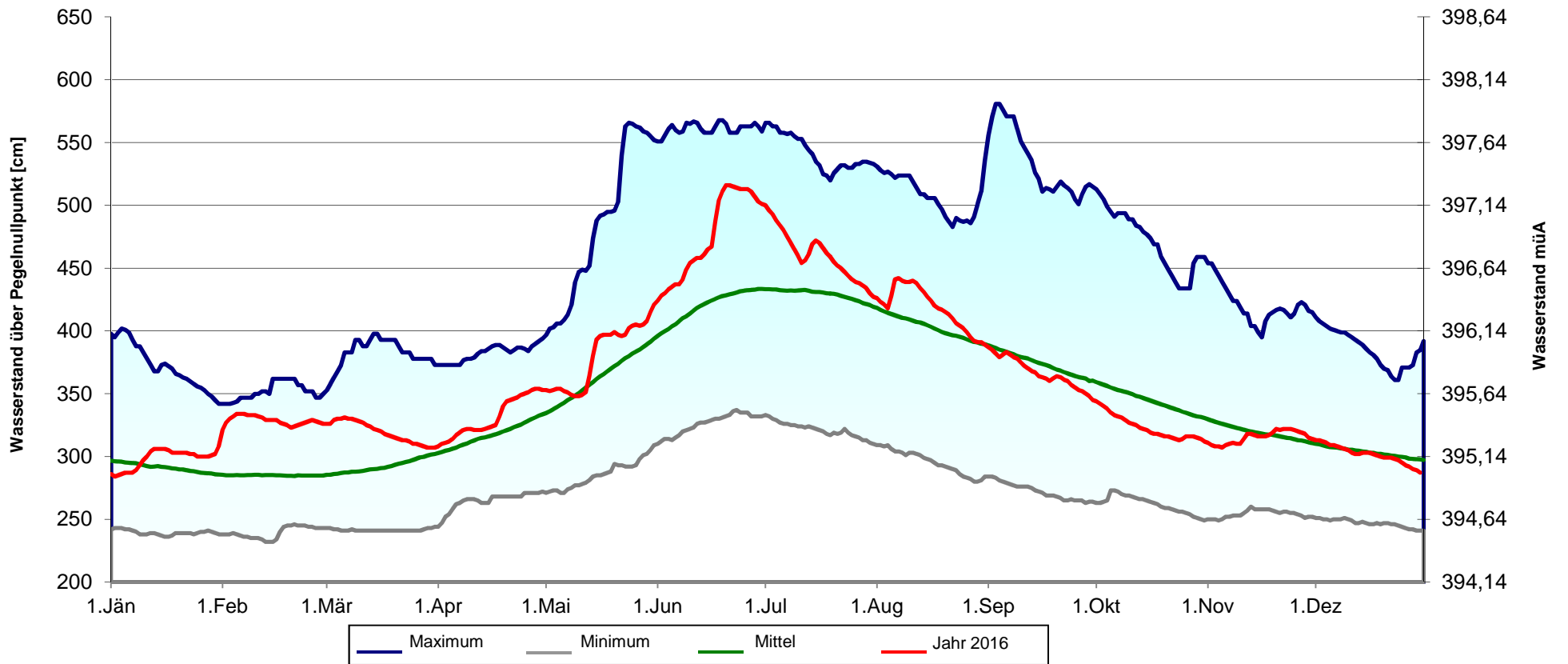
MQ



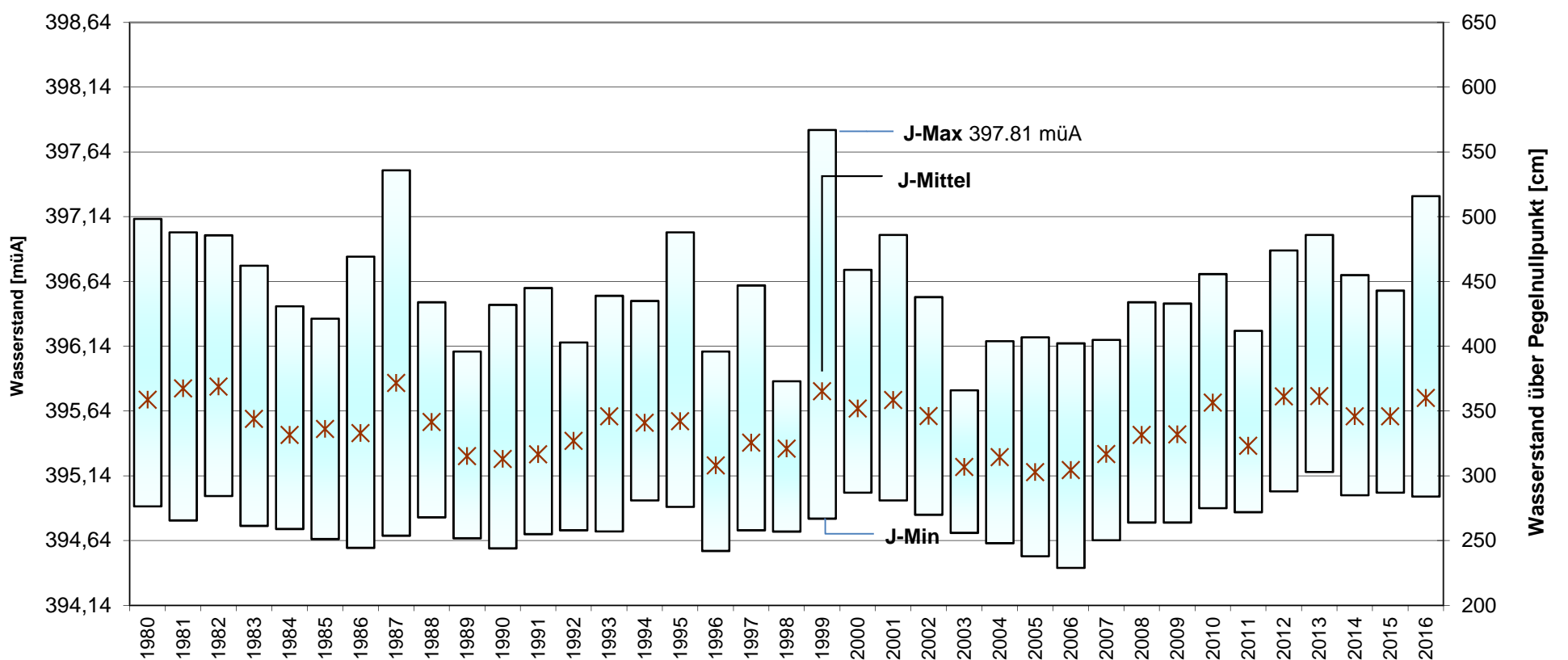
NQ



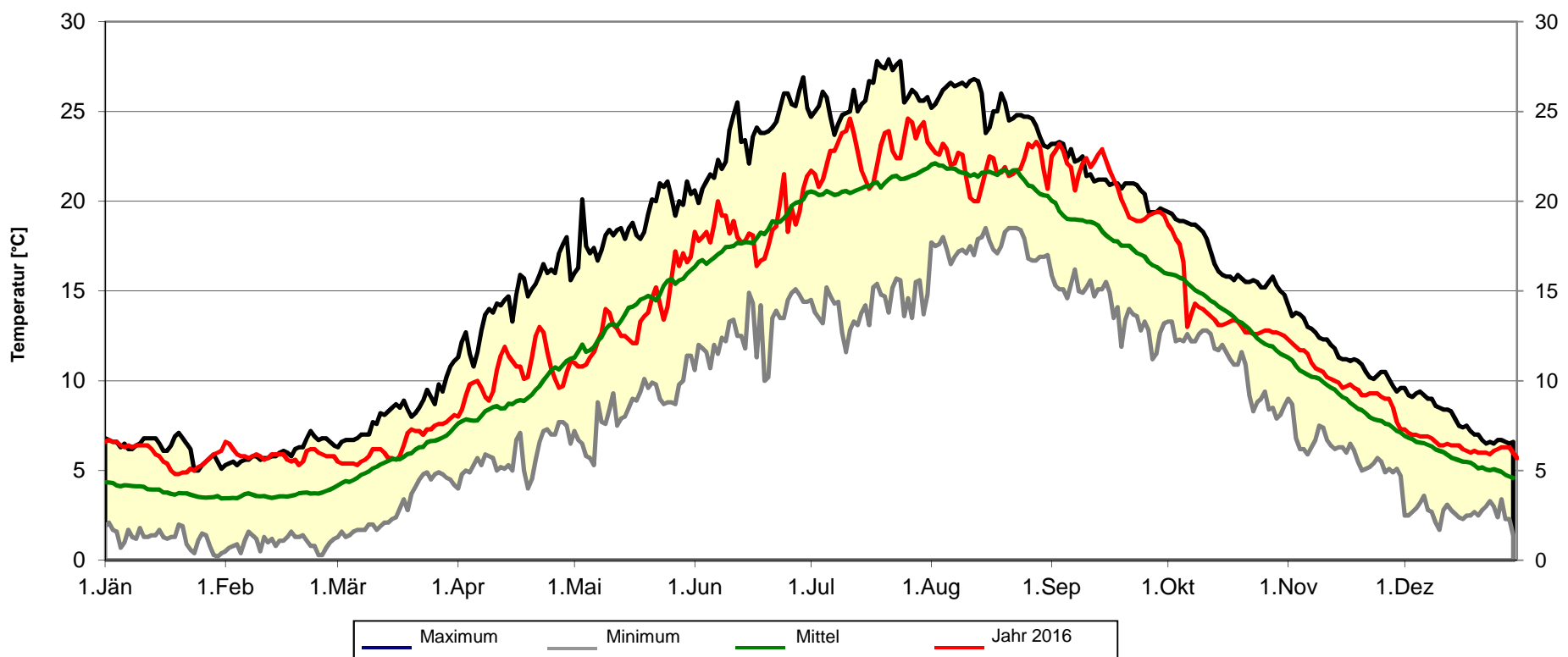
Wasserstandsbewegung von 1864 - 2016 (153 Jahre) - Pegelnullpunkt: 392,14 m. ü. Adria



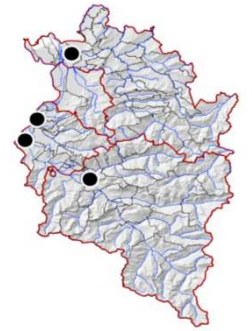
Wasserstandsbewegung von 1980 bis 2016 (Jahresminimum -maximum und -mittelwert)



Wassertemperatur im Tagesmittel (Messpunkt 50 cm unter Wasser)
Extremwerte und Mittel von 1979 - 2016 (38 Jahre)

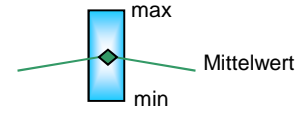


Grundwasser-Quantität

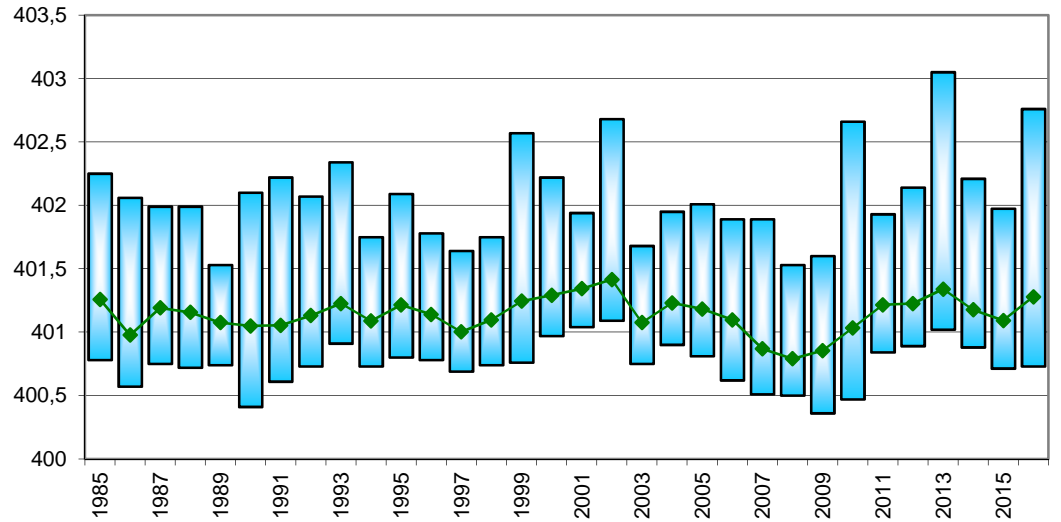
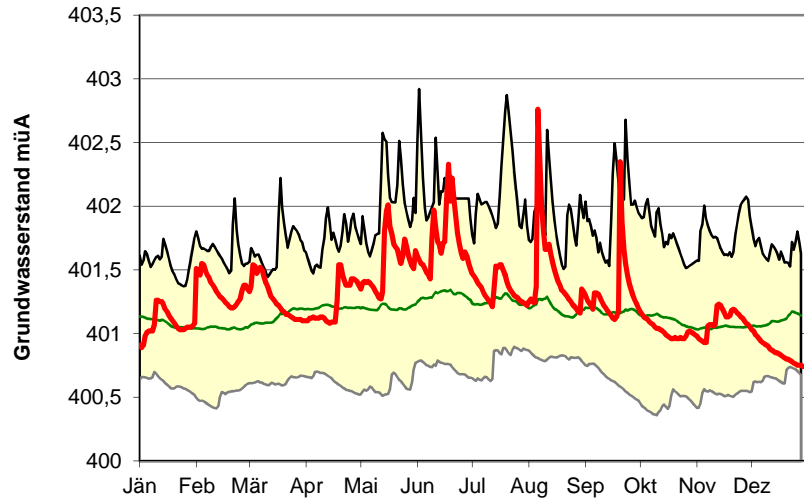


Verlauf Grundwasserstand 2016 mit Min-, Max und Mittelwerten über die gesamte Beobachtungsdauer

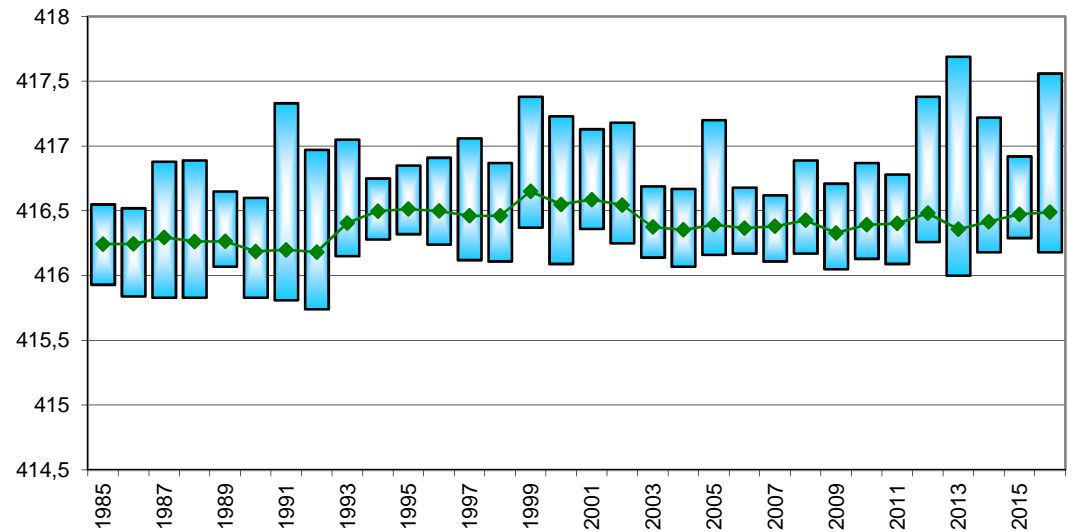
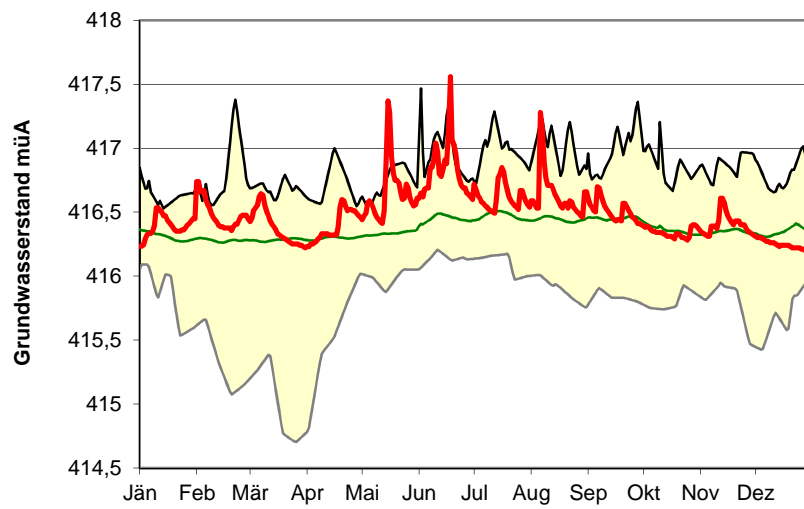
Langjährige Reihe (n=32)



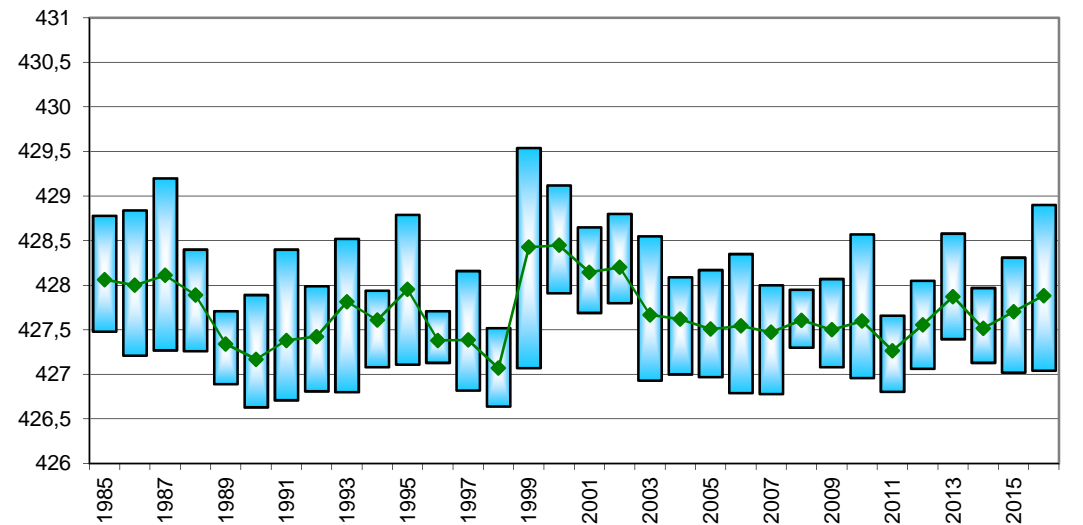
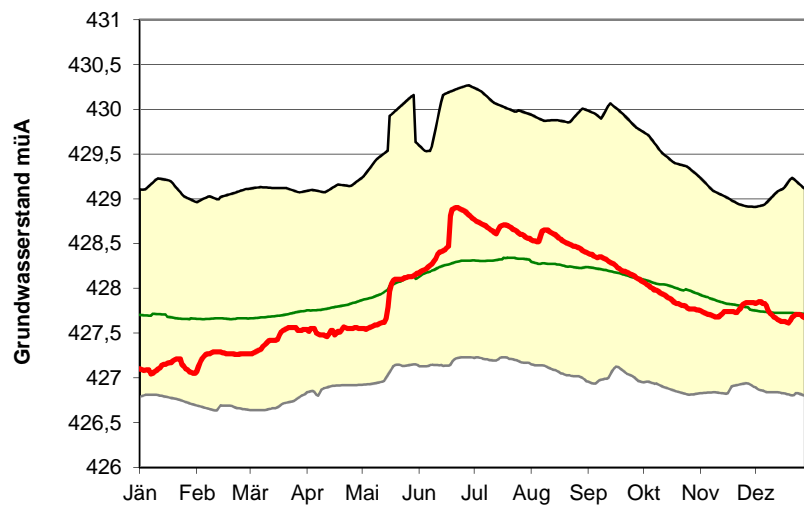
Lauterach 50.2.10 (GOK = 403,42 müA)



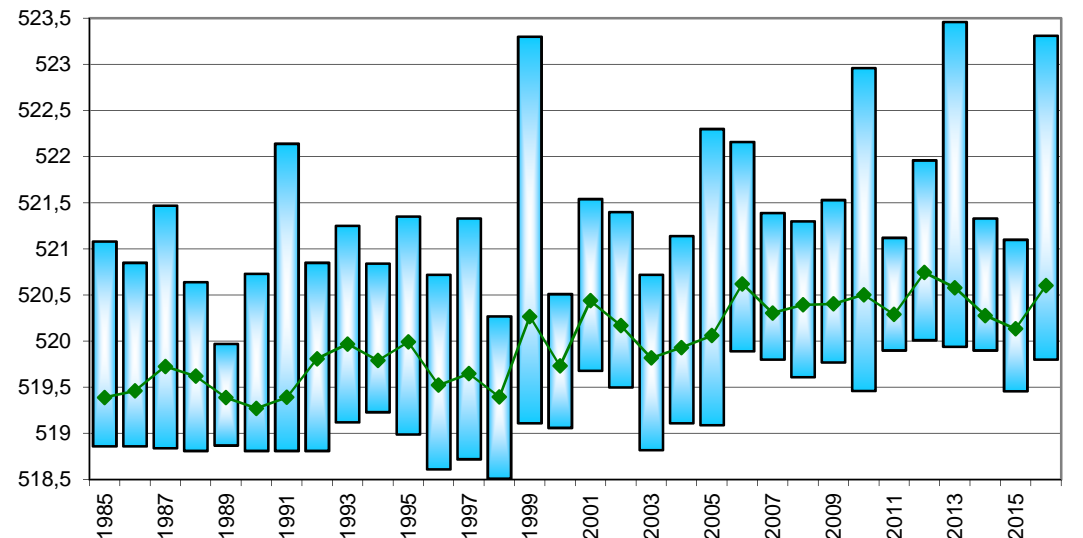
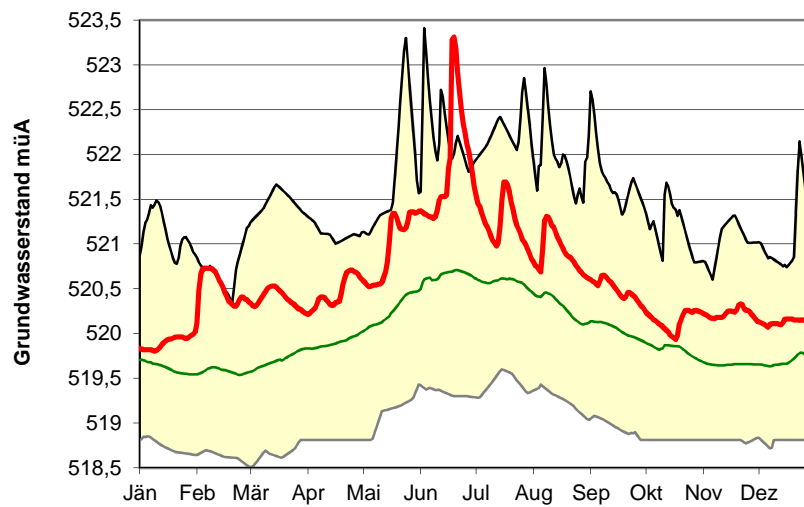
Koblach 50.4.03A (GOK = 418,49 müA)



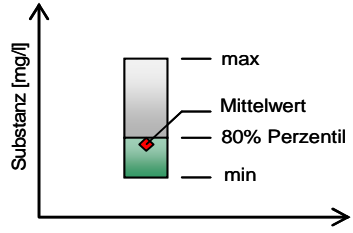
Feldkirch Nofels 01.32.24 A (GOK = 433,00 müA)



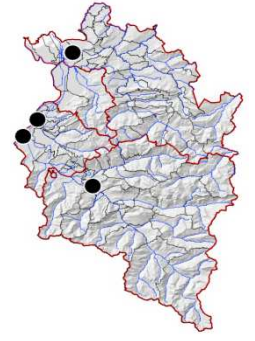
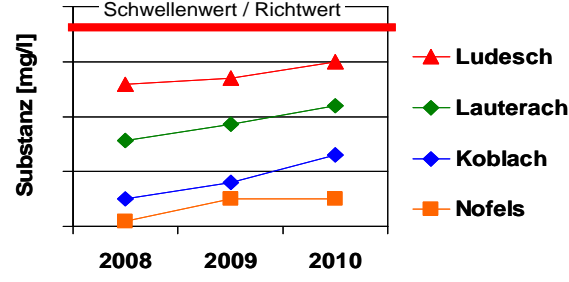
Ludesch 06.36.08 (GOK = 542,57 müA)



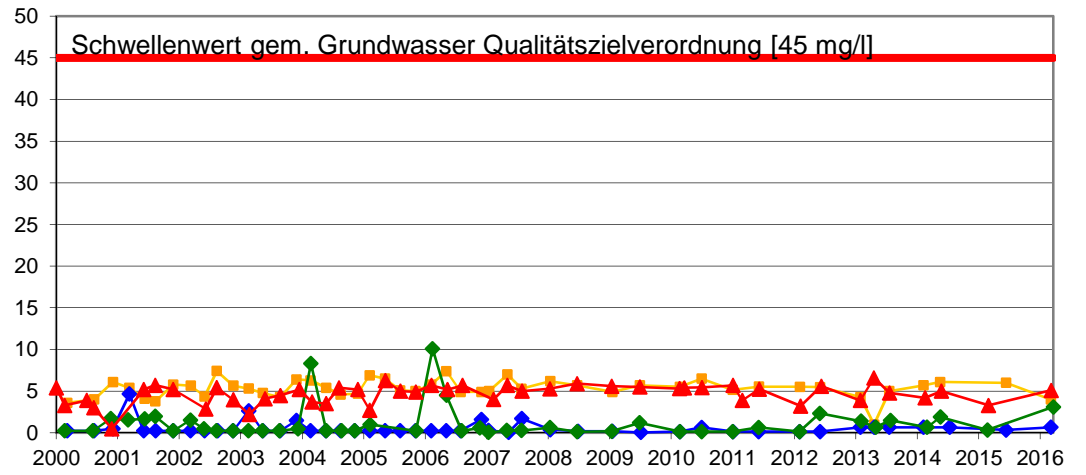
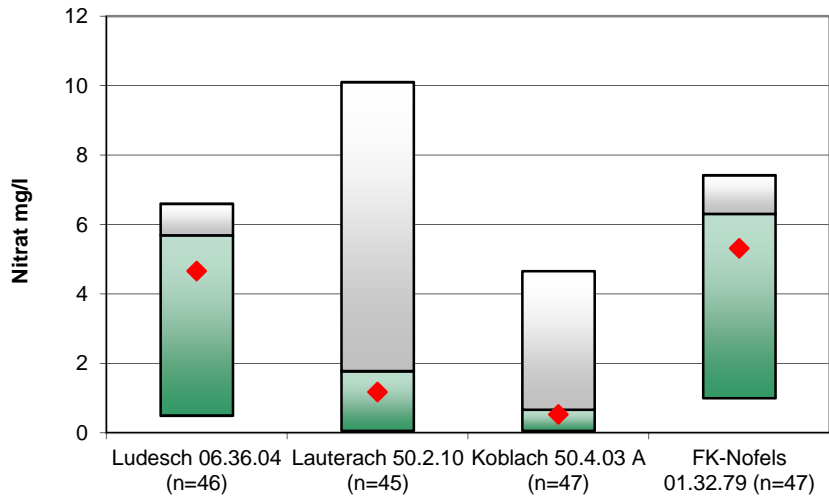
Qualitätsuntersuchungen im Rahmen der GZÜV ab 2000



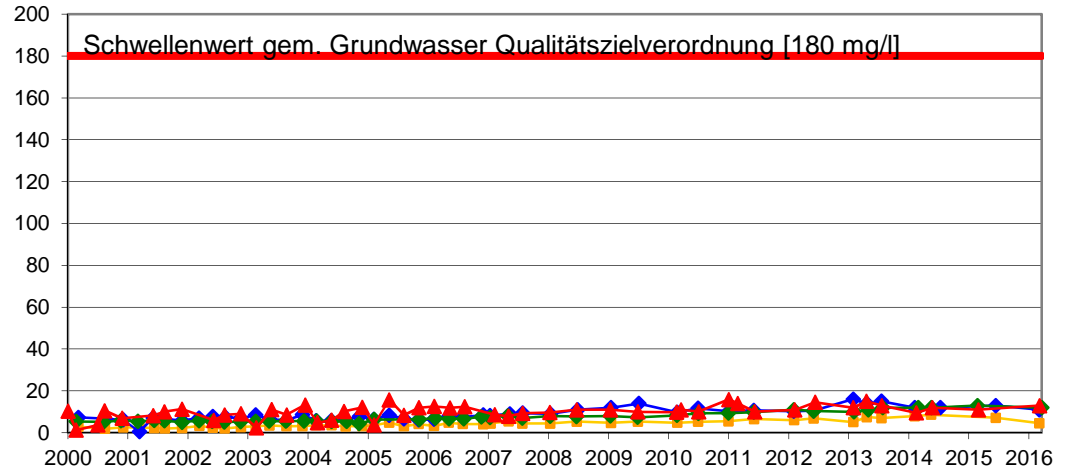
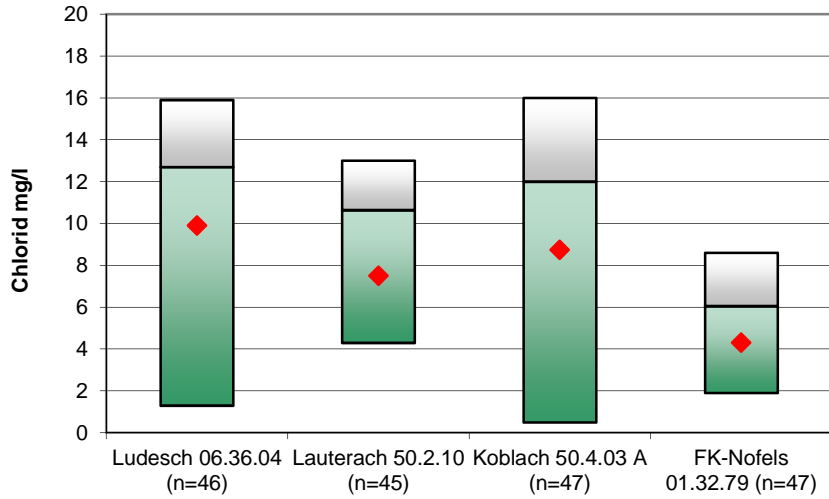
Verlauf der gemessenen Werte ab 2000



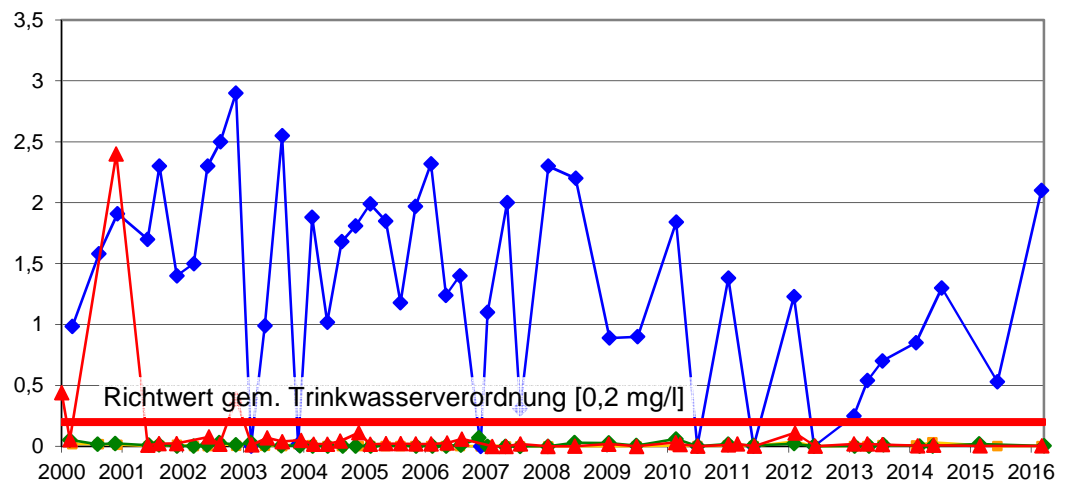
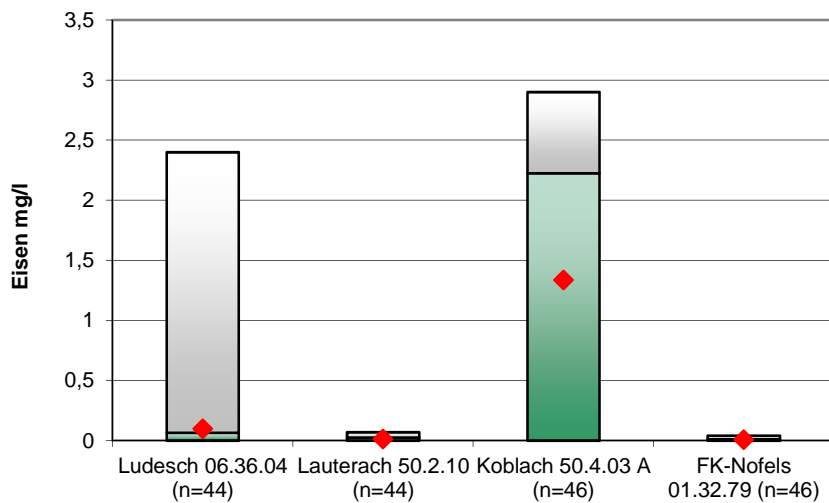
Nitrat



Chlorid



Eisen



Mangan

