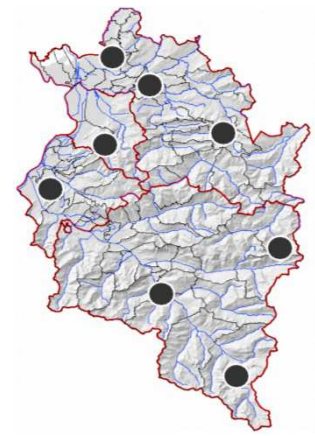
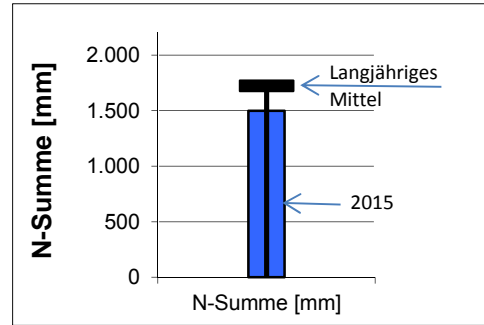


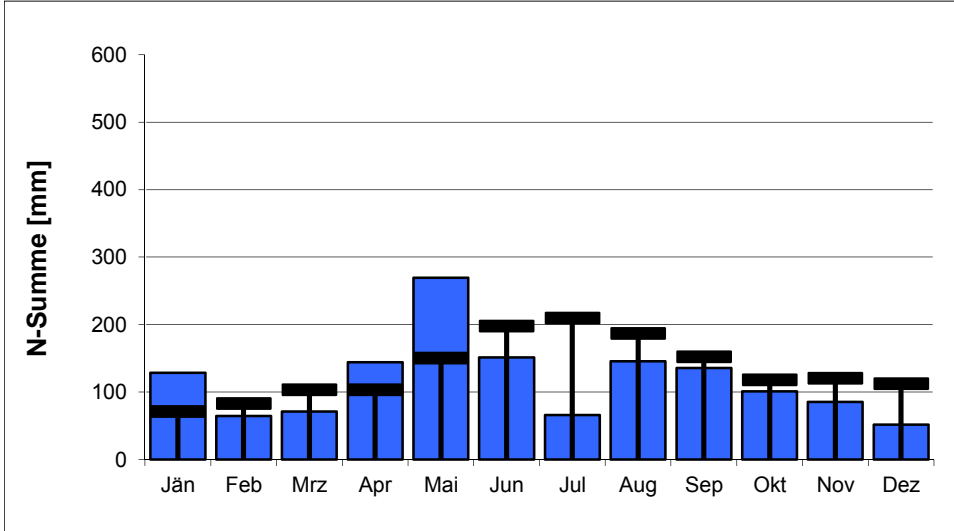
- Anlage 1: Niederschlag
- Anlage 2: Oberflächengewässer, Abfluss
- Anlage 3: Bodenseewasserstand und –temperatur
- Anlage 4: Grundwasser – Quantität
- Anlage 5: Grundwasser – Qualität

Station	Summe 2015 [mm]	Langjähriges Mittel (LM)	Abweichung gegenüber LM	N-Tage 2015
Bregenz Altreuteweg	1.415	1.607	-12 %	147
Alberschwende	1.601	1.883	-15 %	163
Schönenbach	1.811	2.262	-20 %	152
Ebnit	1.954	2.174	-10 %	148
Feldkirch	1.123	1.232	-9 %	149
Zürs	1.492	1.576	-5 %	162
Rodund	1.021	1.271	-20 %	152
Vermunt	1.571	1.774	-11 %	184
Mittelwerte 2015	1.499	1.722	-13 %	157

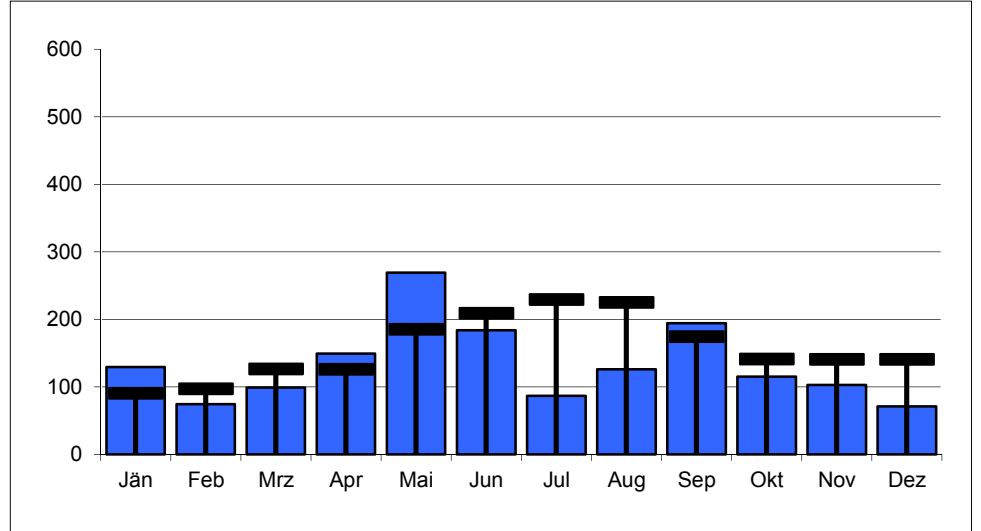
mittlere Jahressumme 2015 und langjähriges Mittel



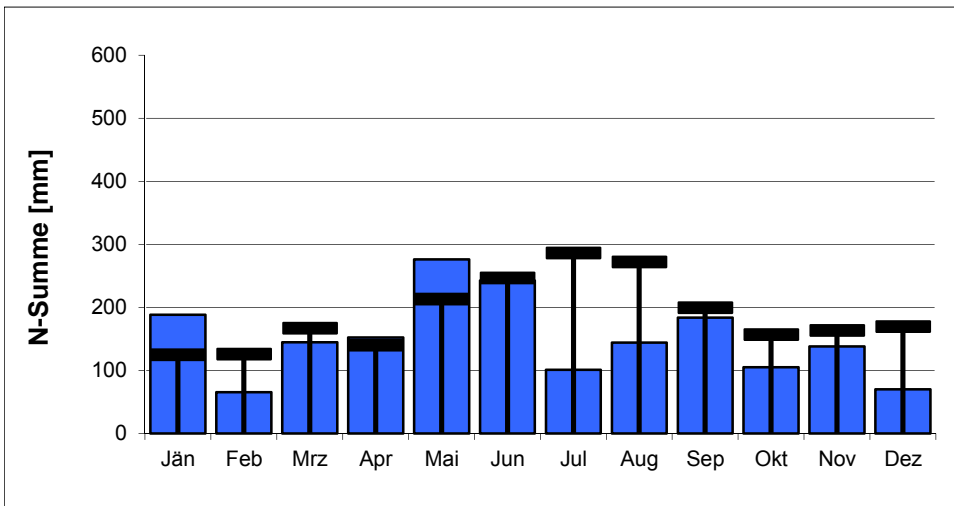
**Bregenz Altreuteweg 100776**



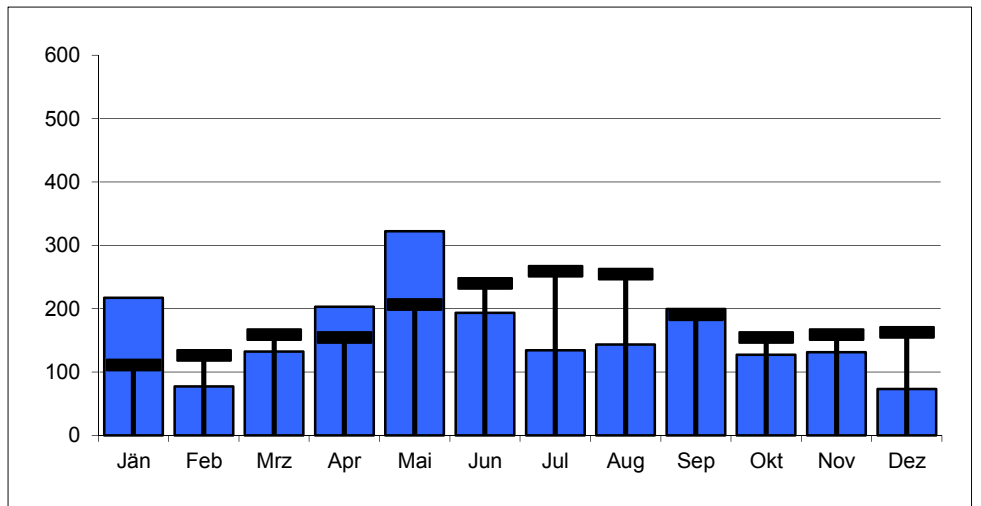
**Alberschwende 100842**



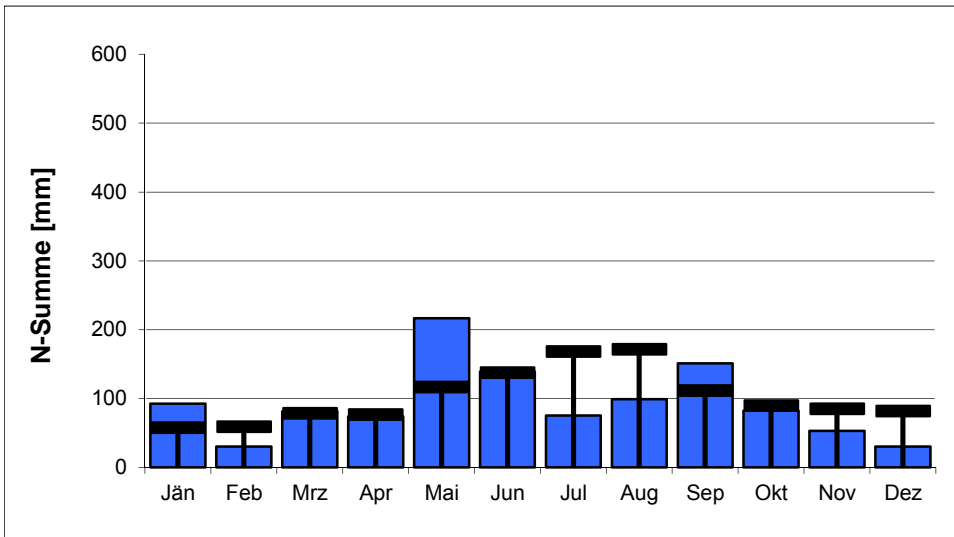
**Schönenbach 100651**



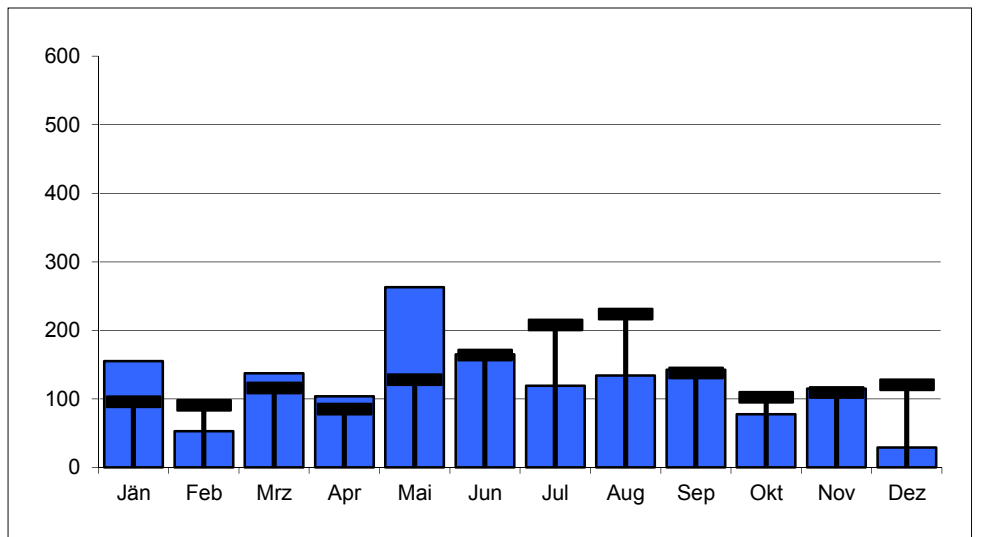
**Ebnit 100453**



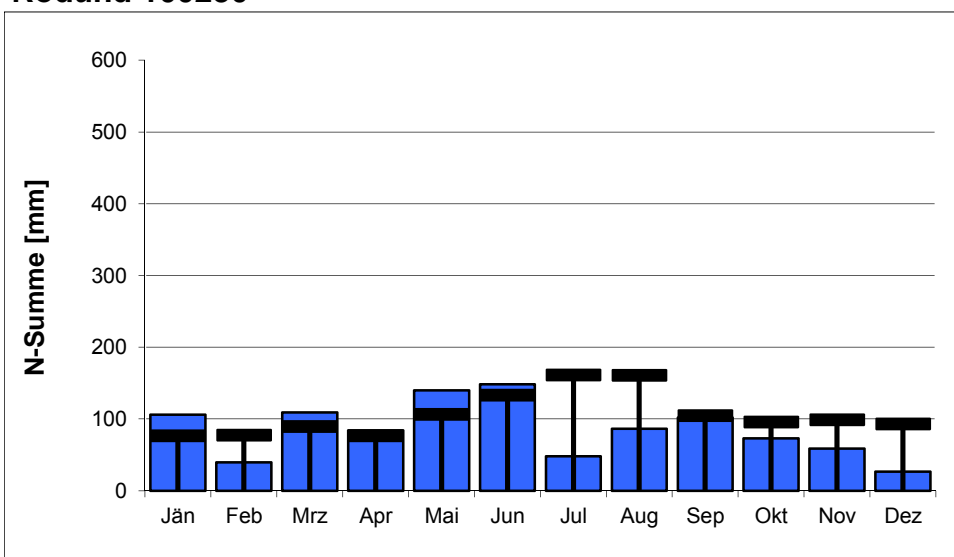
**Feldkirch 100396**



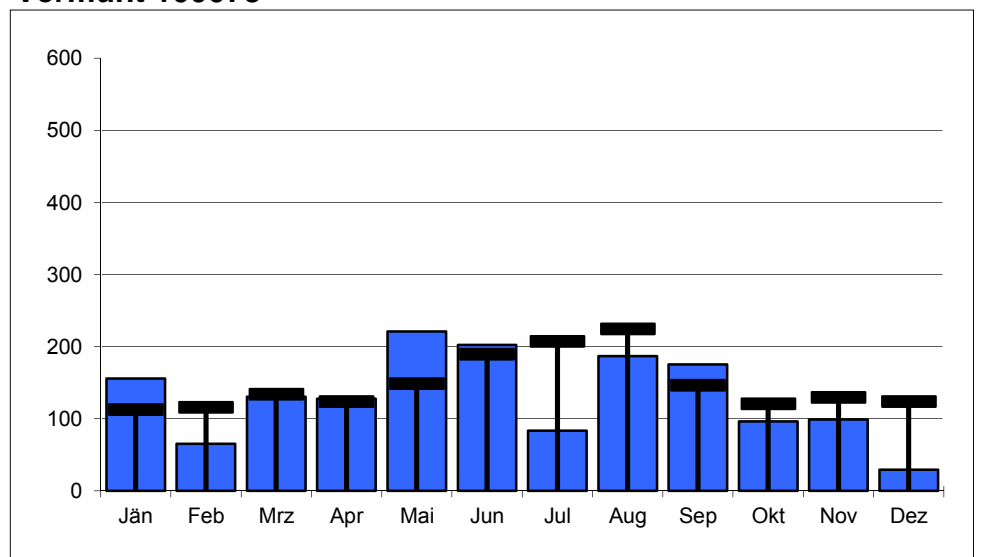
**Zürs 101113**



**Rodund 100230**

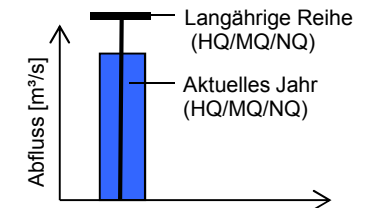


**Vermunt 100073**



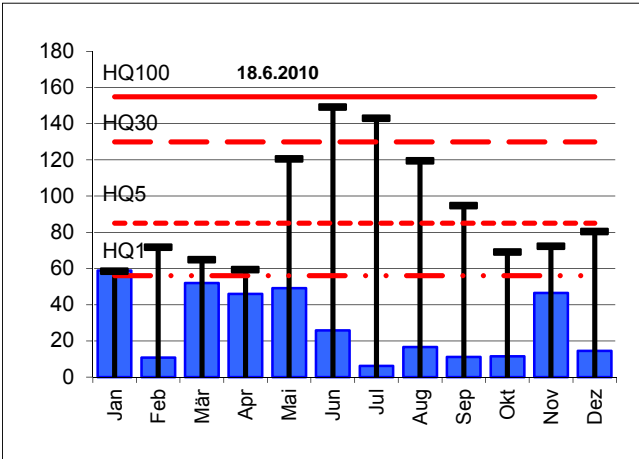
Station	Reihe	Langjährige Reihen [m³/s]						Werte 2015 [m³/s]			Abweichung [%] von langjähriger Reihe		
		NQ	MQ	HQ1	HQ5	HQ30	HQ100	NQ	MQ	HQ	NQ	MQ	HQ100
Leiblach, Unterhochsteg	1976-2014	0,030	3,16	56	85	130	155	0,081	2,98	59	+170%	-6%	-62%
Bregenzerach, Kennelbach	1951-2014	1,07	46,5	480	750	1.100	1.450	3,28	41,3	398	+207%	-11%	-73%
Dornbirnerach, Lauterach	1984-2014	0,238	7,04	120	180	270	325	0,773	6,35	121	+225%	-10%	-63%
Rhein, Lustenau	1951-2014	32	231	1180	1.800	2.600	3.100	45,8	221	921	+44%	-4%	-70%
Ill, Gisingen	1951-2014	3,58	65,3	240	405	590	820	7,00	60,5	213	+96%	-7%	-74%

Legende zu den Diagrammen

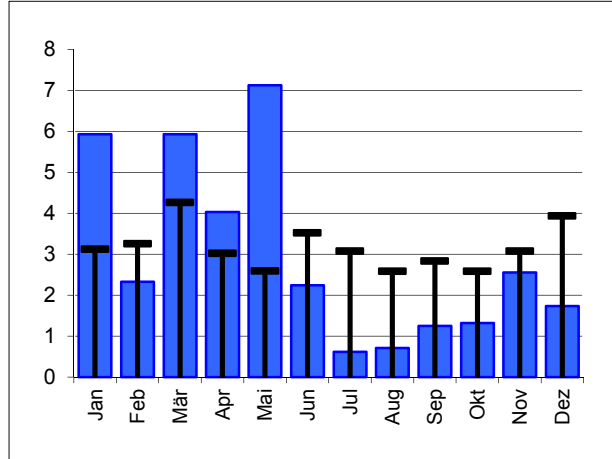


Leiblach, Unterhochsteg

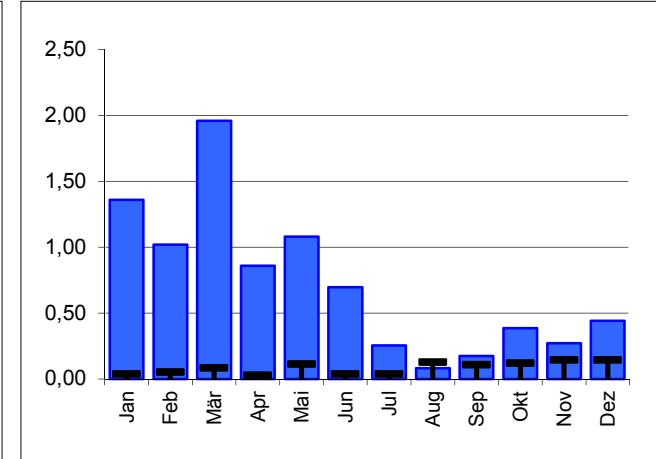
HQ



MQ

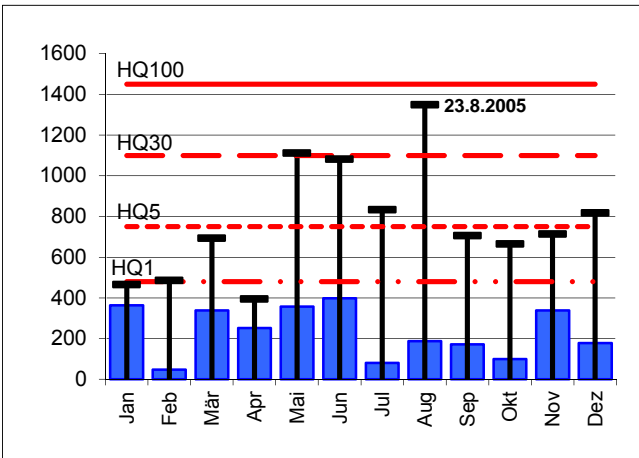


NQ

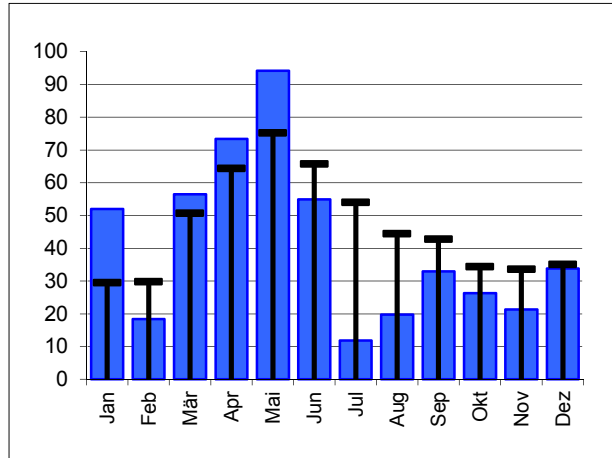


Bregenzerach, Kennelbach

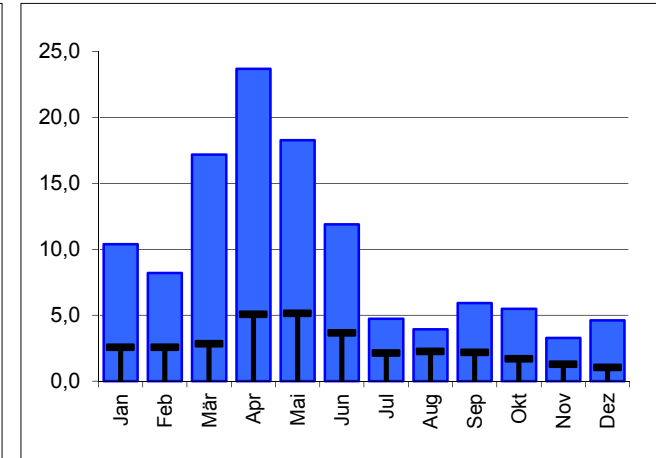
HQ



MQ

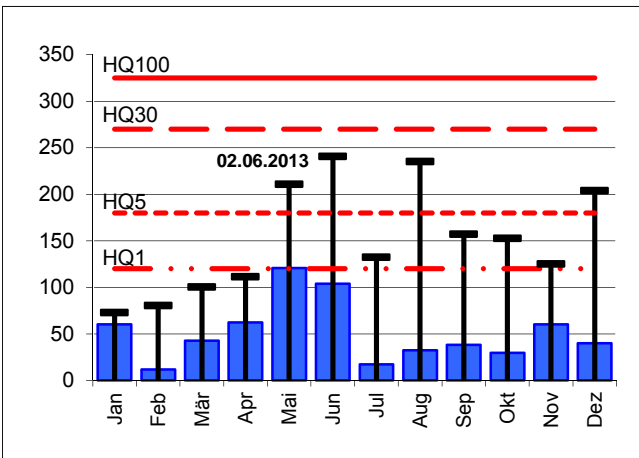


NQ

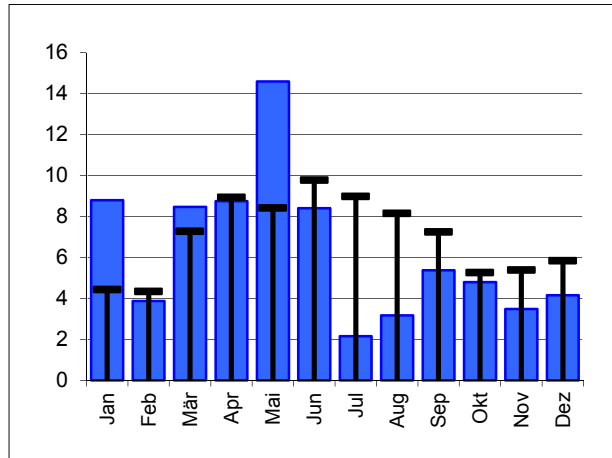


Dornbirnerach, Lauterach

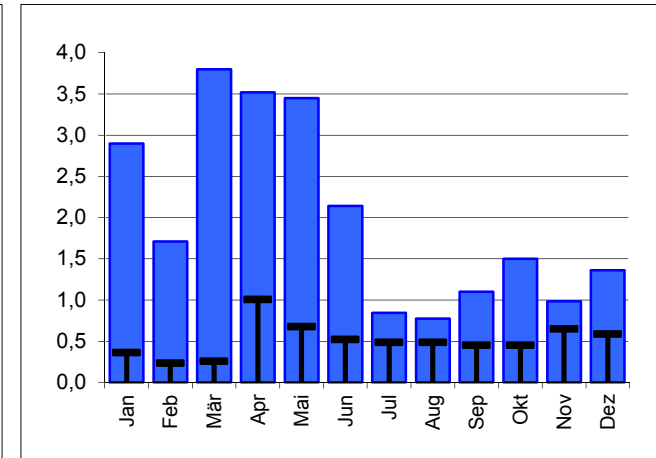
HQ



MQ

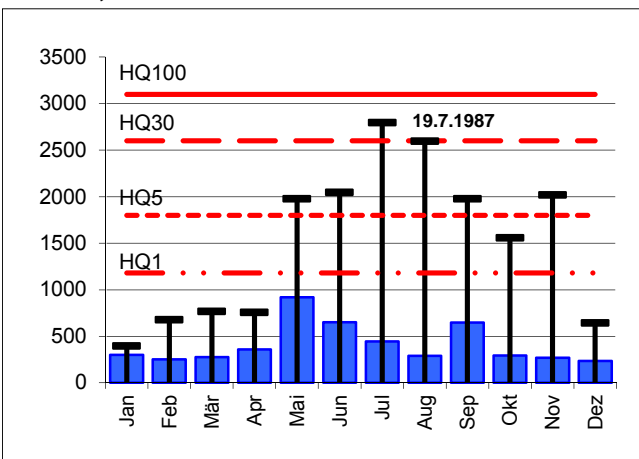


NQ

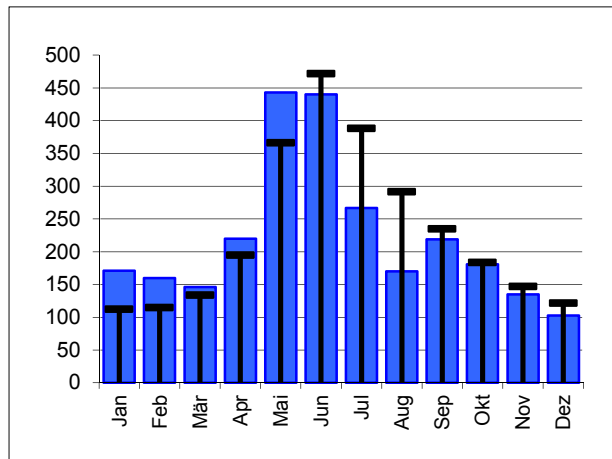


Rhein, Lustenau

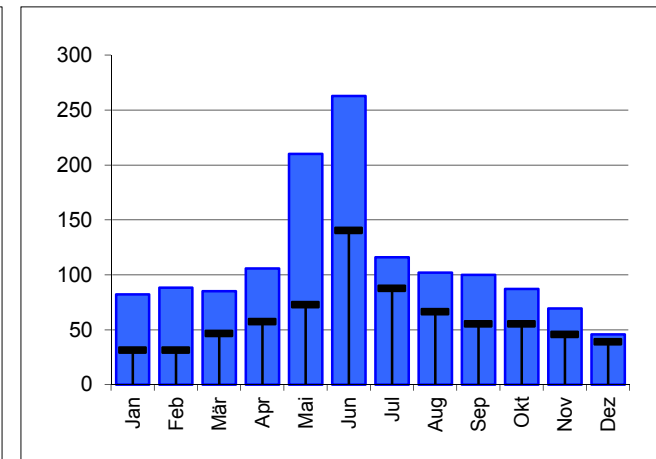
HQ



MQ

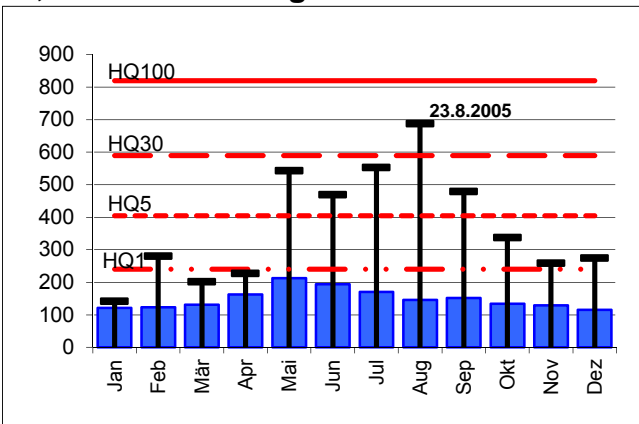


NQ

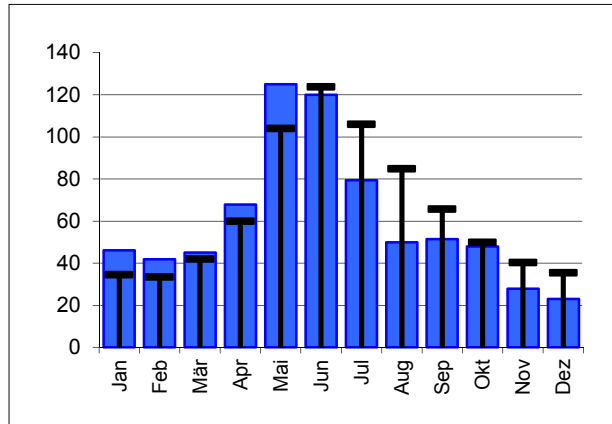


Ill, Feldkirch-Gisingen

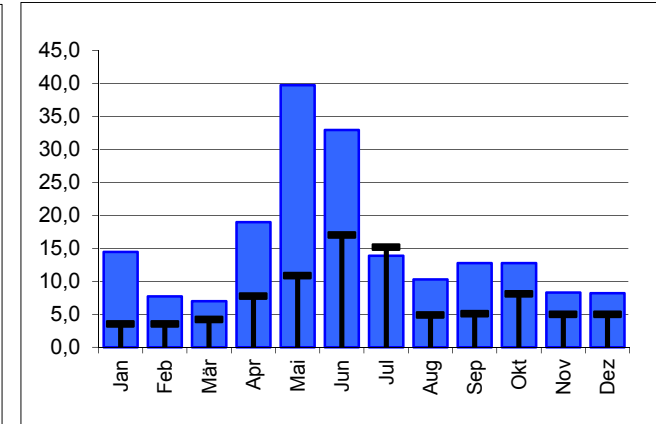
HQ



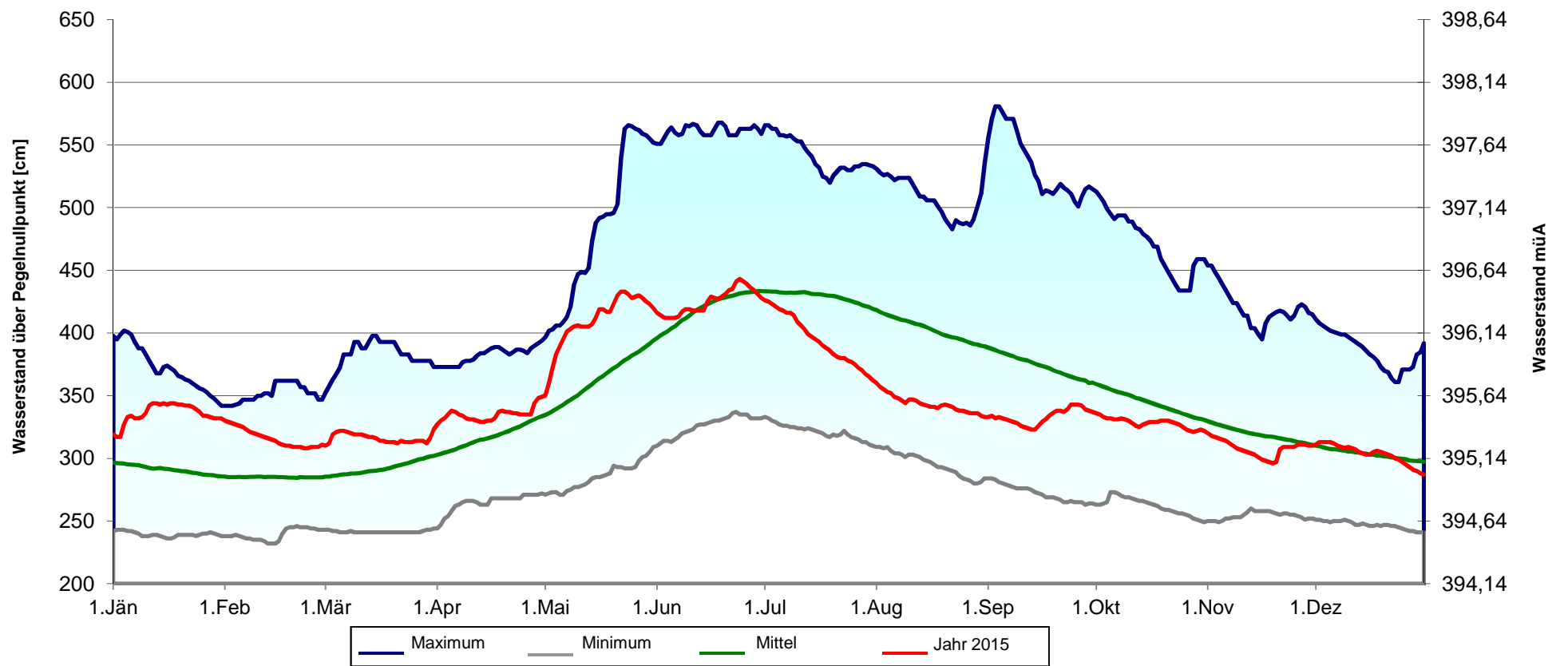
MQ



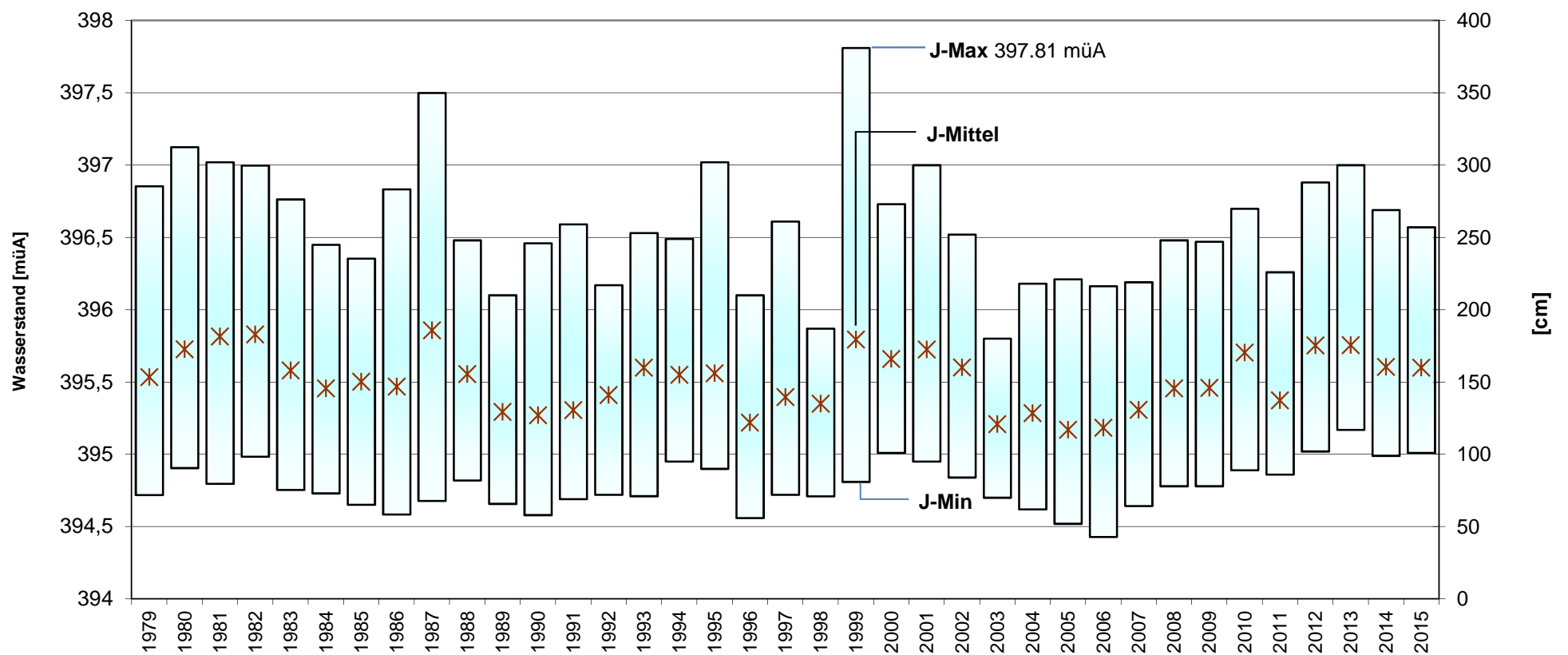
NQ



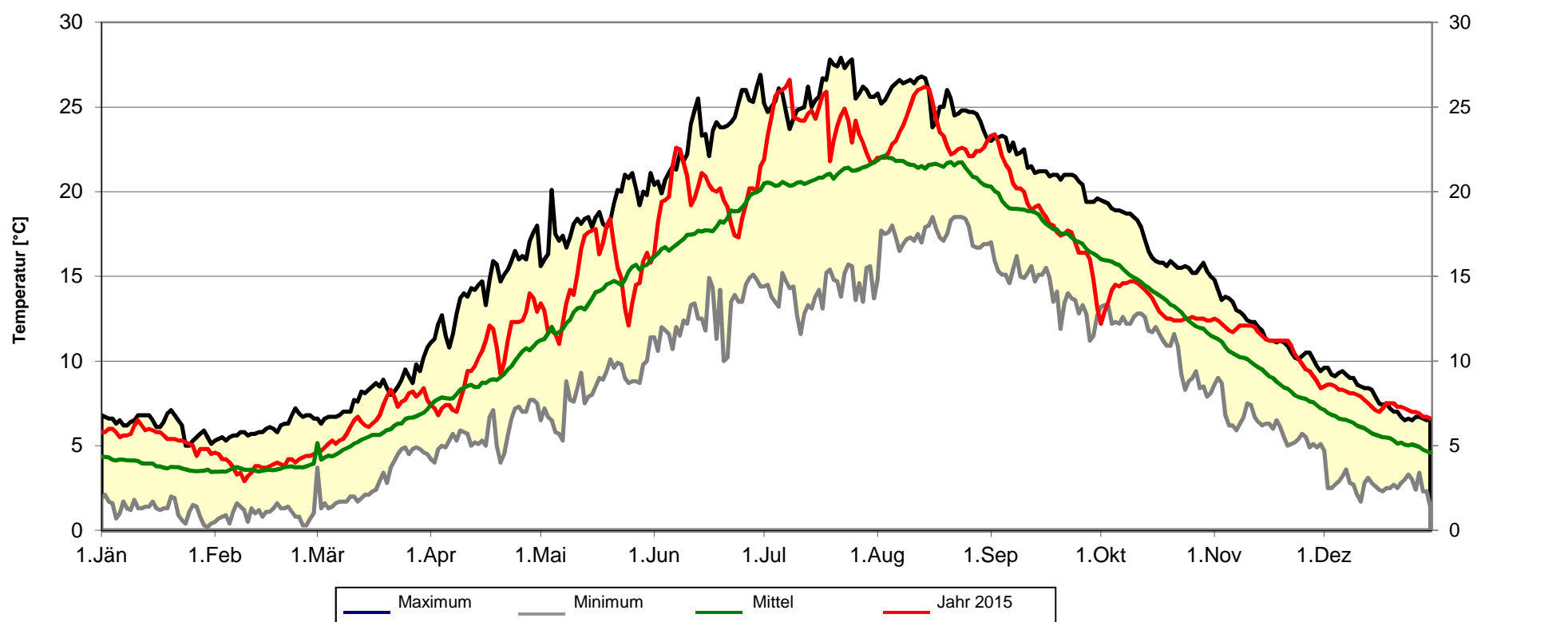
Wasserstandsbewegung von 1864 - 2015 (152 Jahre) - Pegelnullpunkt: 392,14 m. ü. Adria



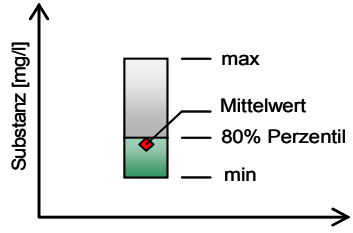
Wasserstandsbewegung von 1979 bis 2015 (Jahresminimum -maximum und -mittelwert)



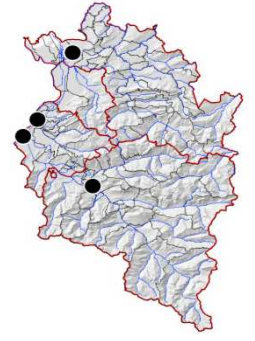
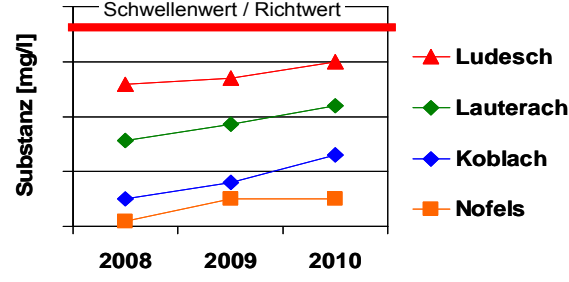
Wassertemperatur im Tagesmittel (Messpunkt 50 cm unter Wasser)  
Extremwerte und Mittel von 1979 - 2015 (37 Jahre)



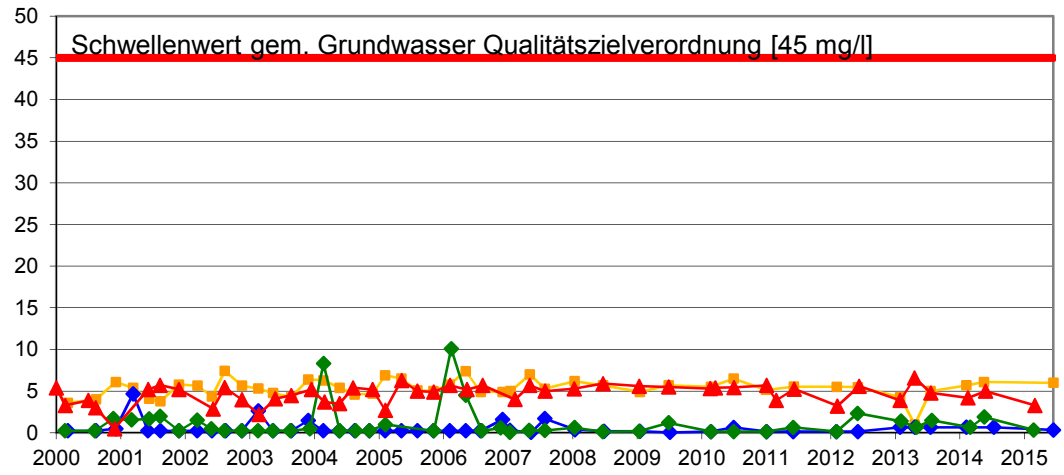
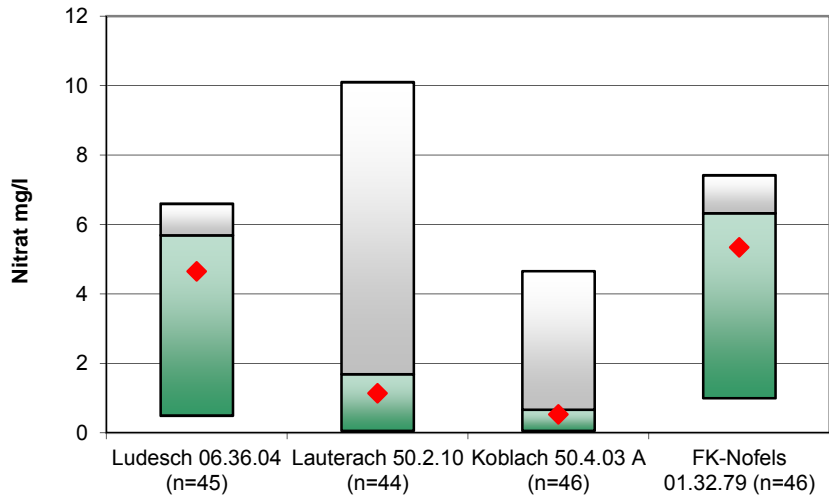
## Qualitätsuntersuchungen im Rahmen der GZÜV ab 2000



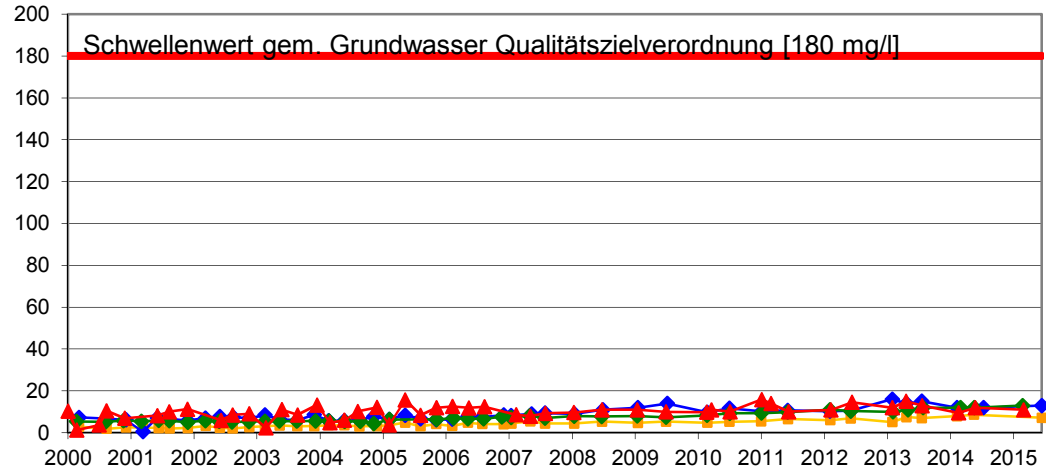
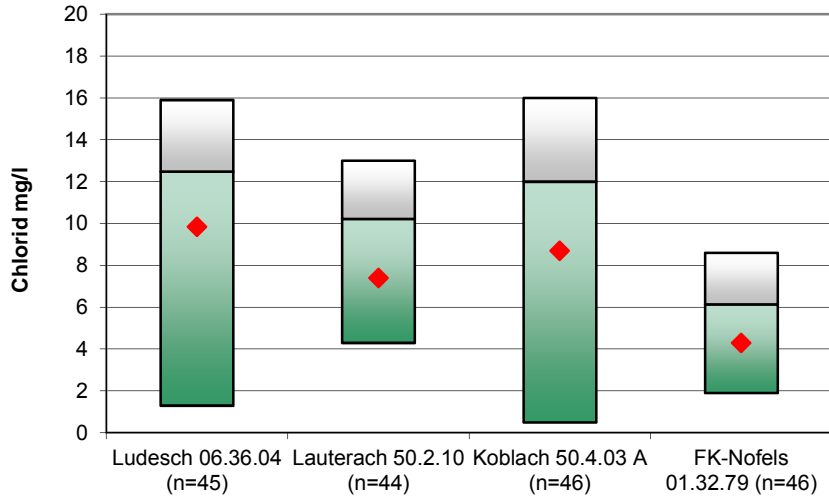
## Verlauf der gemessenen Werte ab 2000



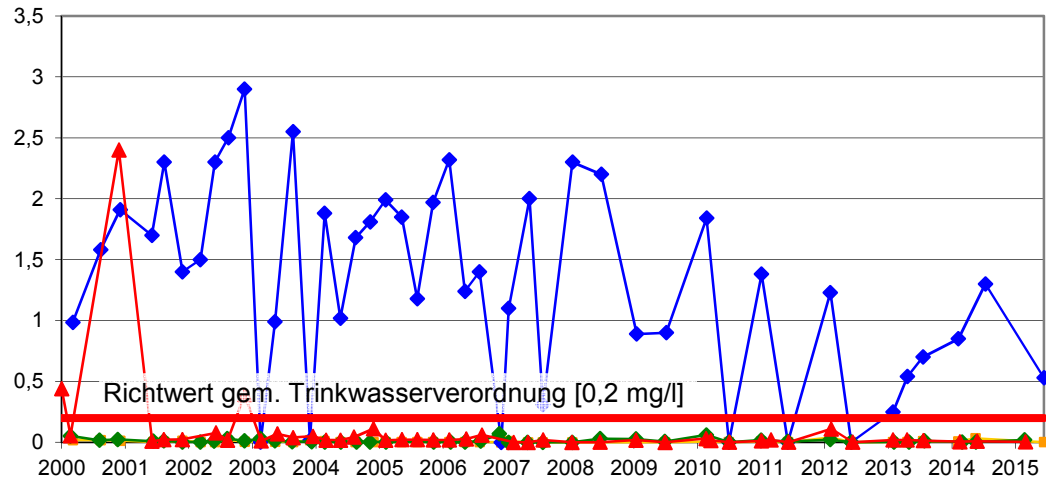
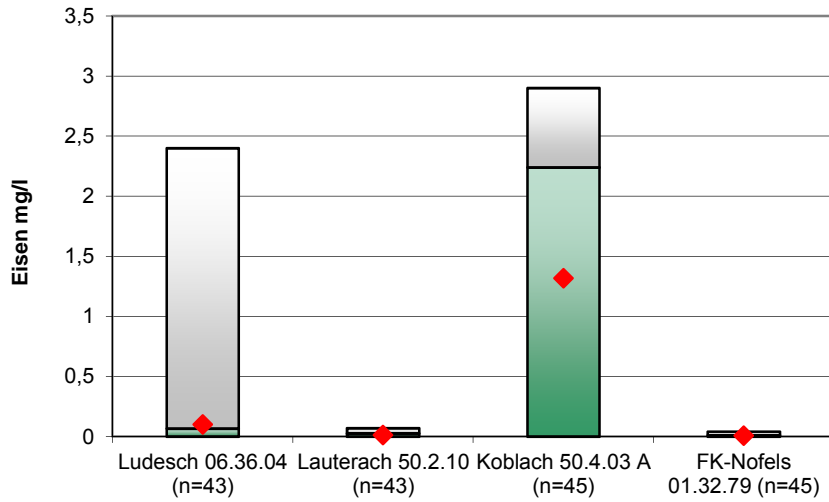
### Nitrat



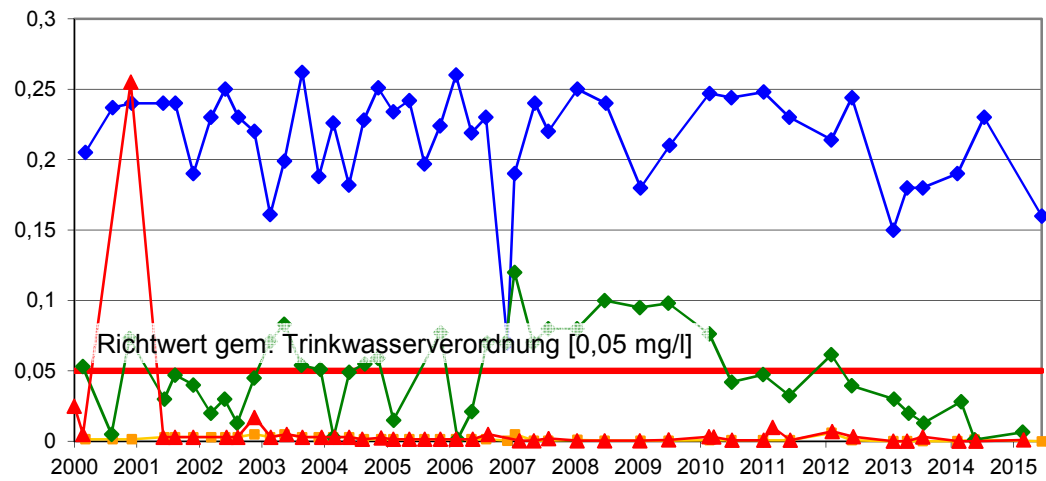
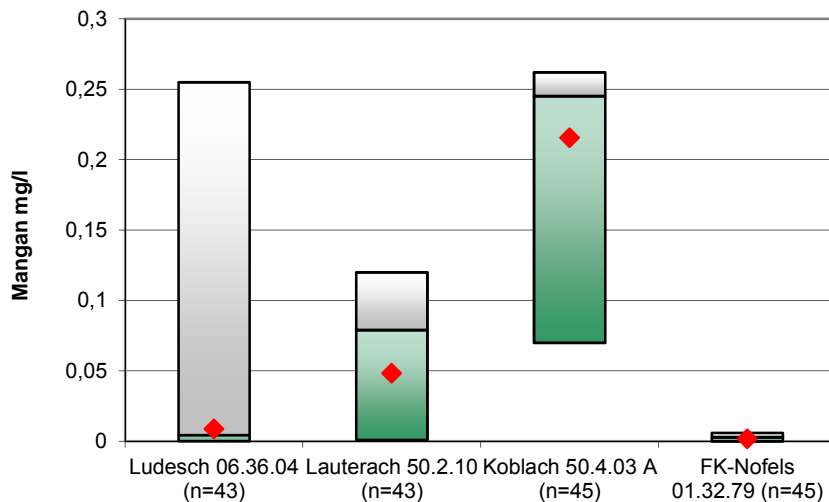
### Chlorid



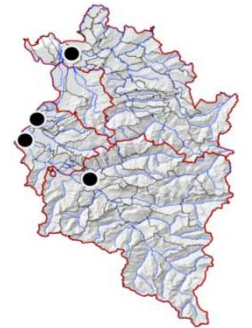
### Eisen



### Mangan

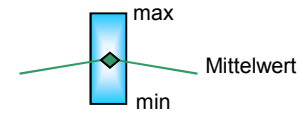


# Grundwasser-Quantität

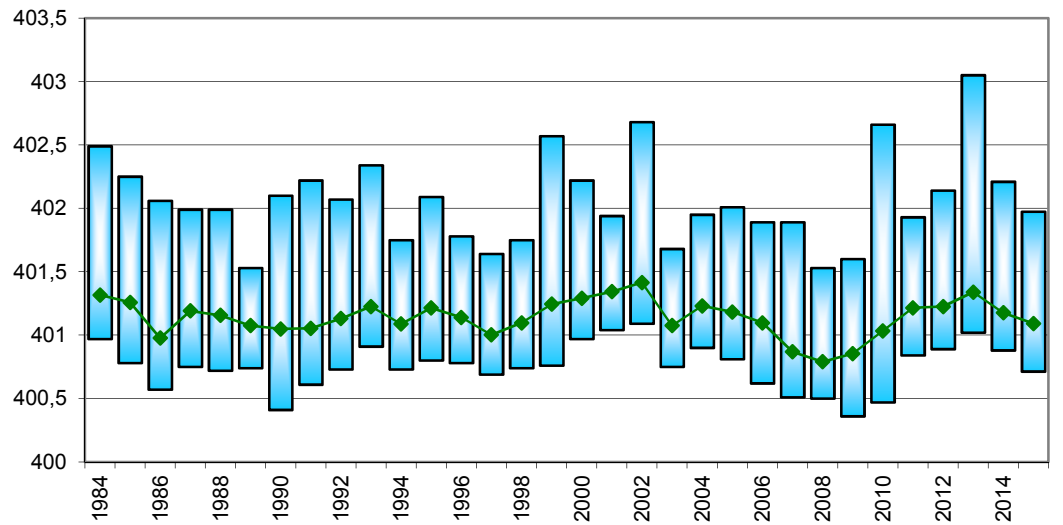
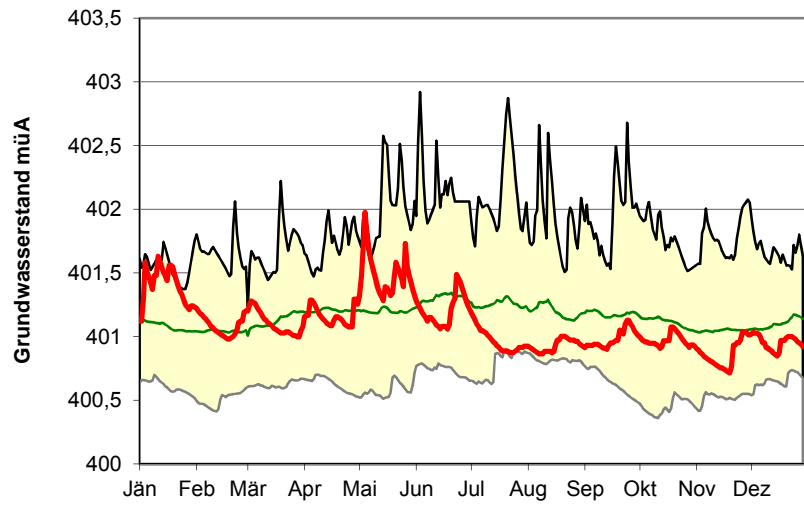


Verlauf Grundwasserstand 2015 mit Min-, Max und Mittelwerten über die gesamte Beobachtungsdauer

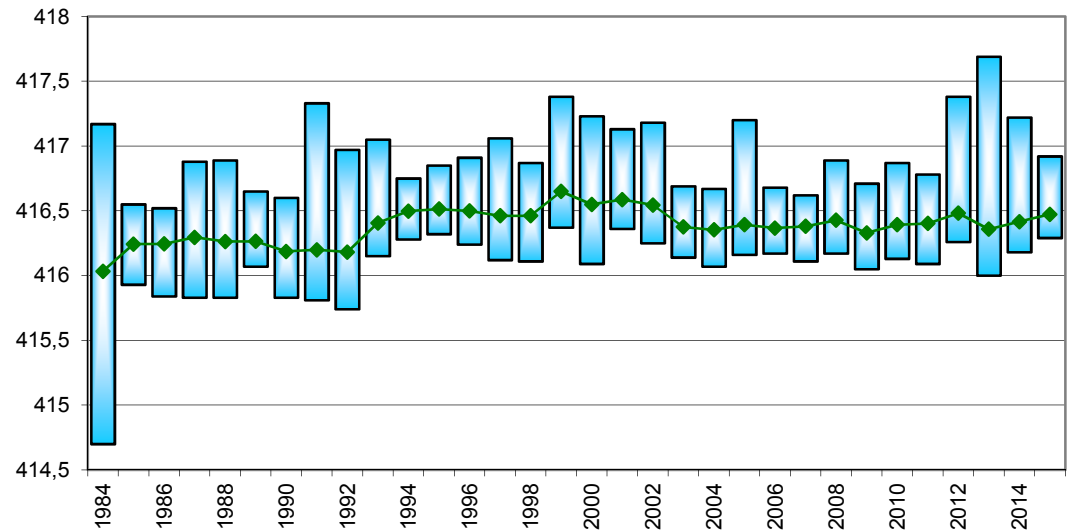
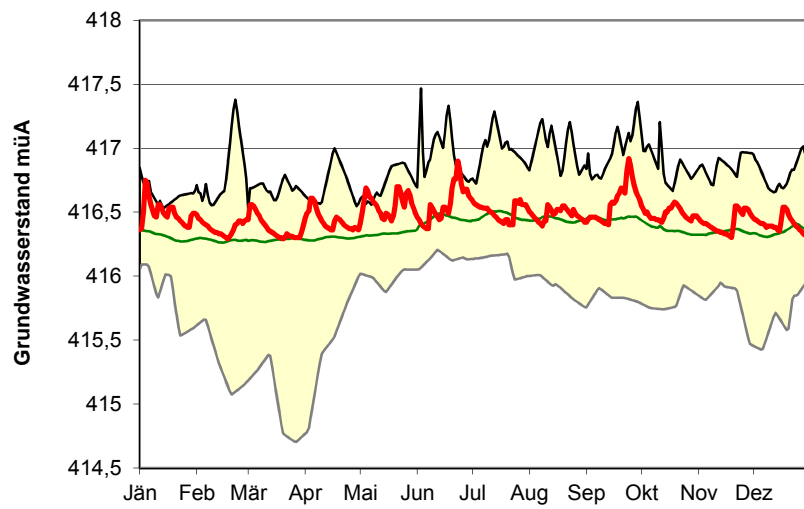
Langjährige Reihe (n=30)



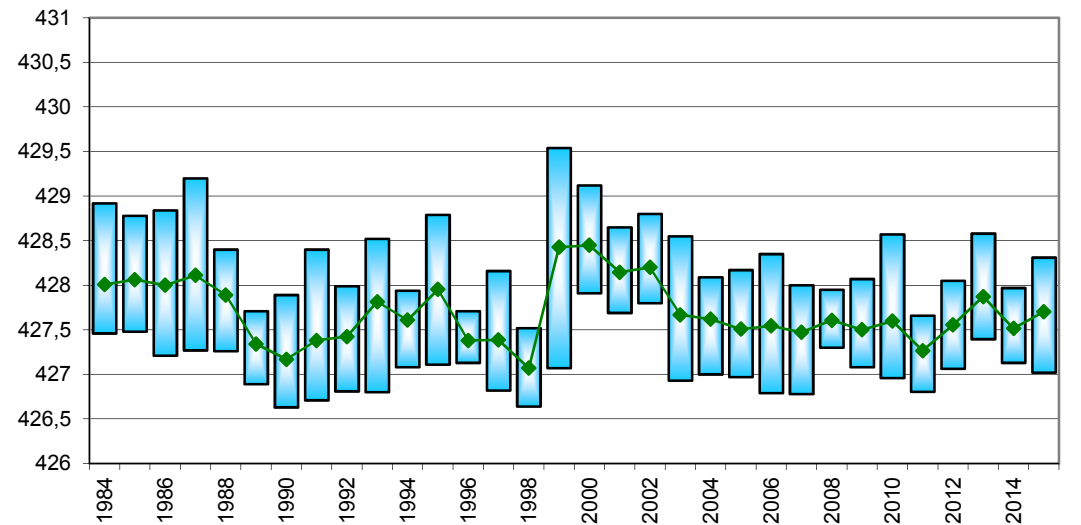
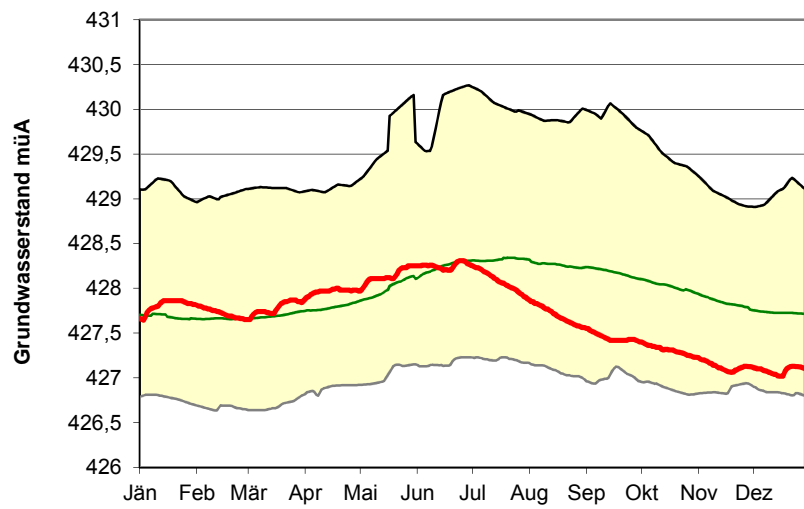
**Lauterach 50.2.10 (GOK = 403,42 müA)**



**Koblach 50.4.03A (GOK = 418,49 müA)**



**Feldkirch Nofels 01.32.24 A (GOK = 433,00 müA)**



**Ludesch 06.36.08 (GOK = 542,57 müA)**

