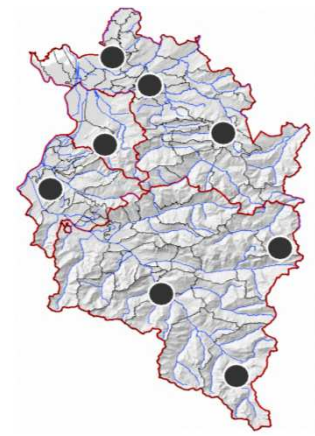
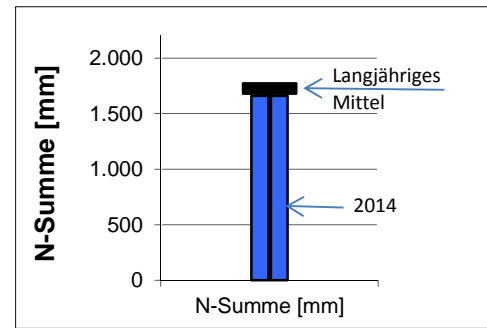


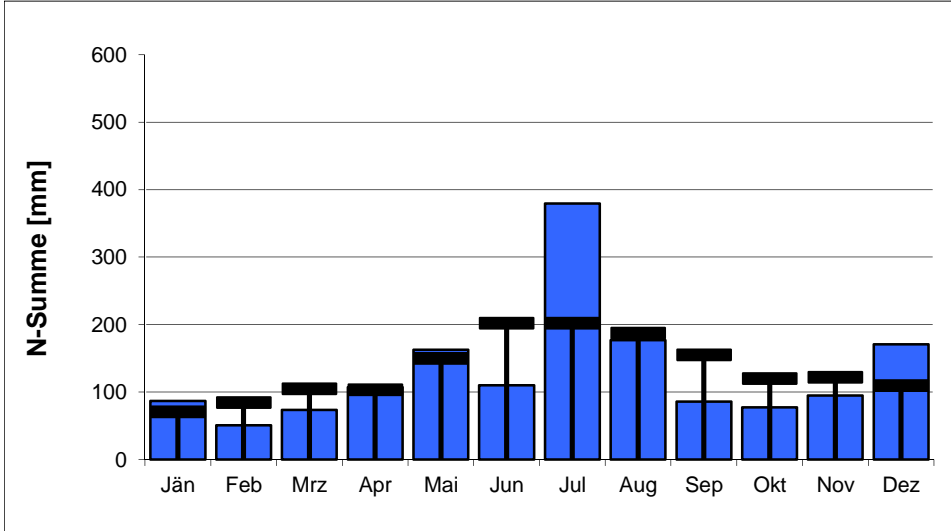
- Anlage 1: Niederschlag
- Anlage 2: Oberflächengewässer, Abfluss
- Anlage 3: Bodenseewasserstand und –temperatur
- Anlage 4: Grundwasser – Quantität
- Anlage 5: Grundwasser – Qualität

Station	Summe 2014 [mm]	Langjähriges Mittel (LM)	Abweichung gegenüber LM	N-Tage 2014
Bregenz Altreuteweg	1.577	1.609	-2%	186
Alberschwende	1.733	1.890	-8%	196
Schönenbach	2.226	2.264	-2%	178
Ebnit	2.088	2.178	-4%	176
Feldkirch	1.190	1.232	-3%	181
Zürs	1.492	1.580	-6%	213
Rodund	1.206	1.274	-5%	192
Vermunt	1.763	1.774	-1%	234
Mittelwerte 2014	1.659	1.725	-4%	195

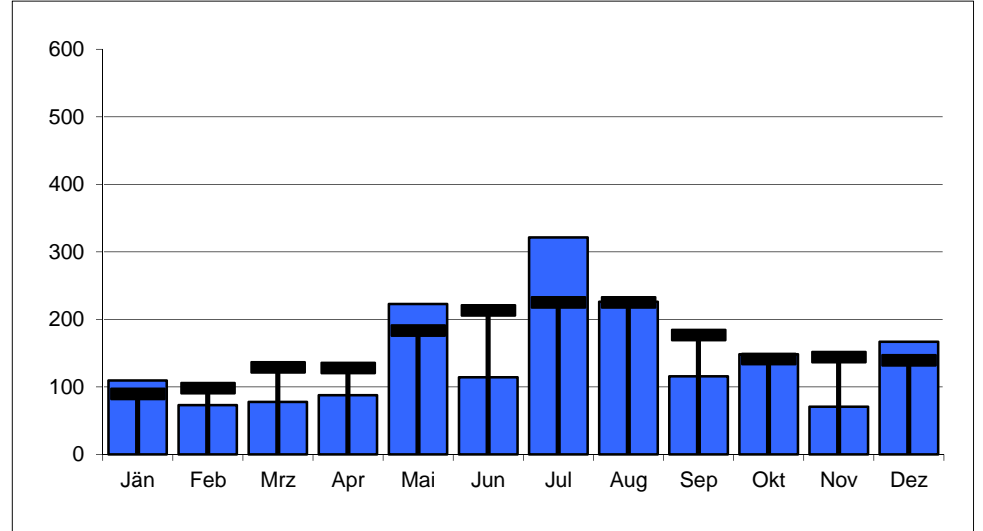
mittlere Jahressumme 2014 und langjähriges Mittel



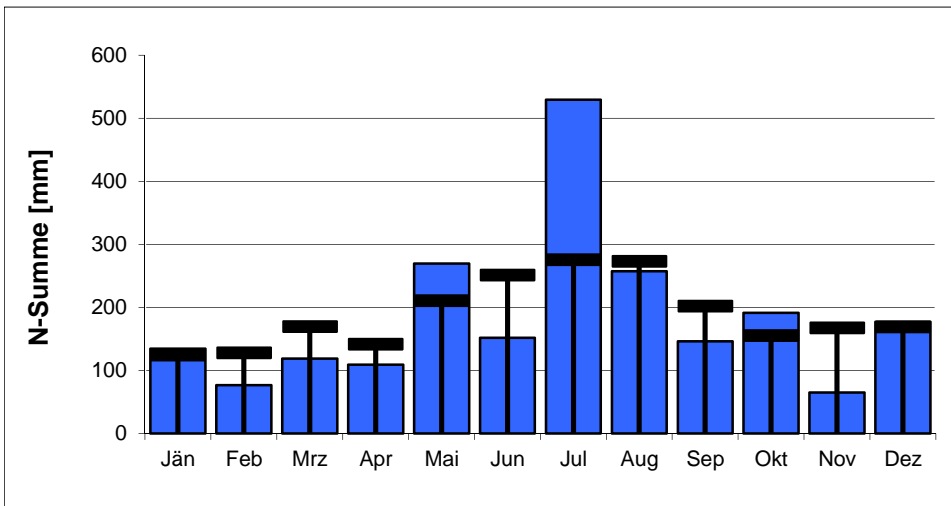
Bregenz Altreuteweg 100776



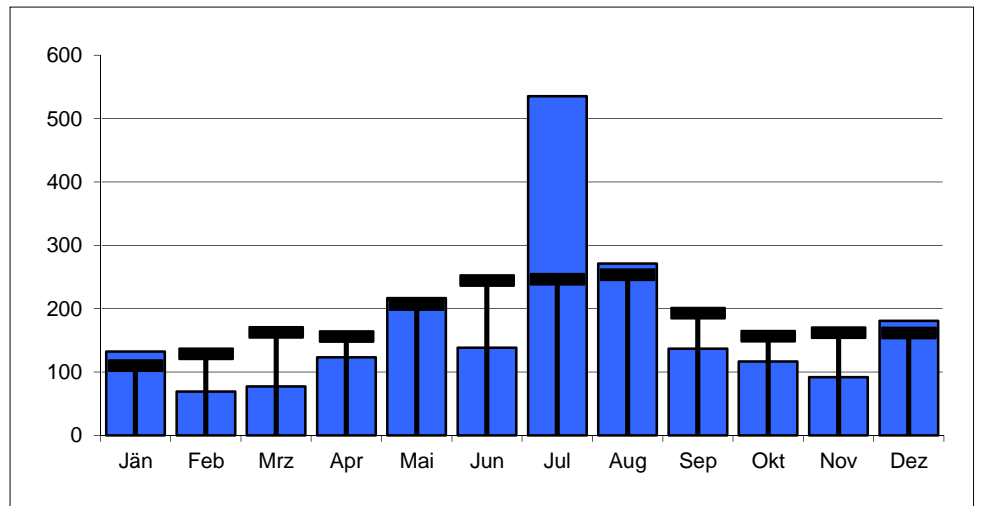
Alberschwende 100842



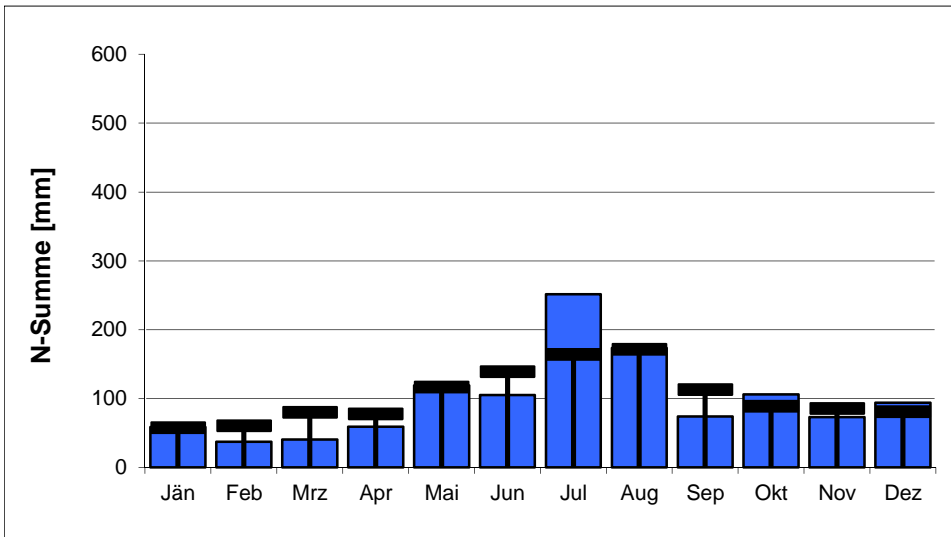
Schönenbach 100651



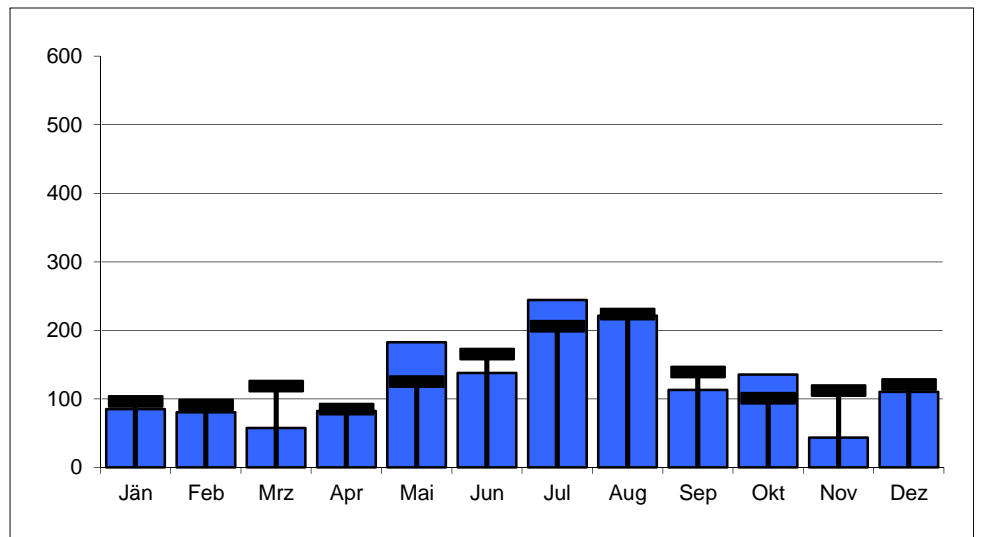
Ebnit 100453



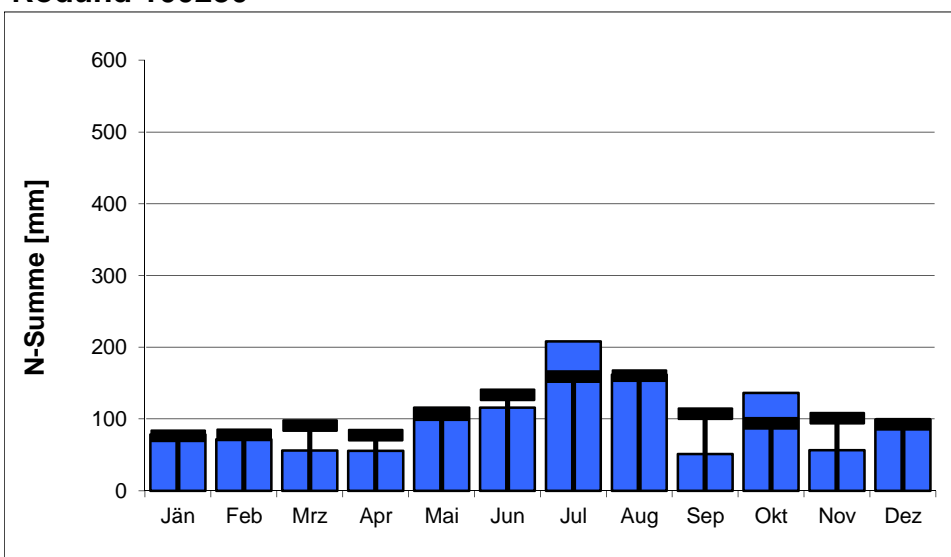
Feldkirch 100396



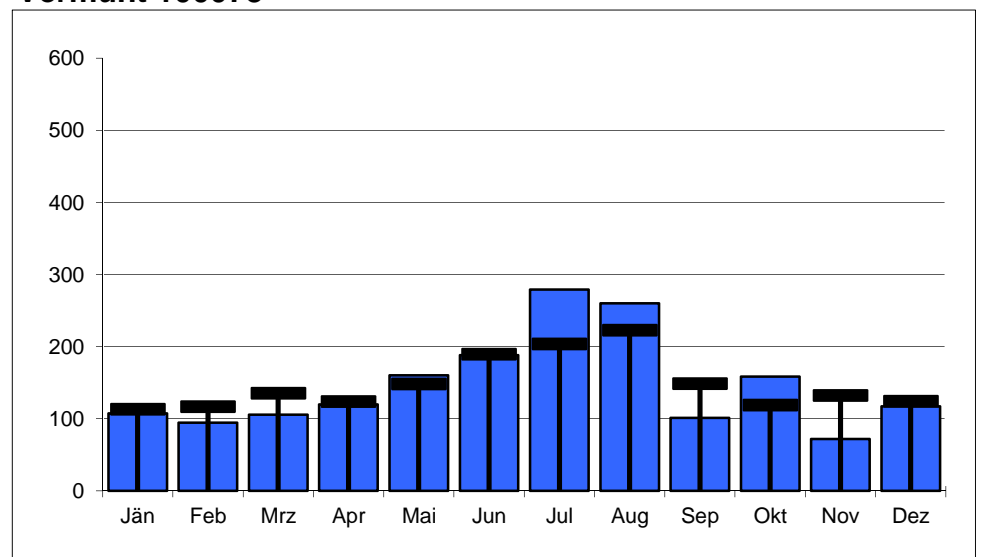
Zürs 101113



Rodund 100230

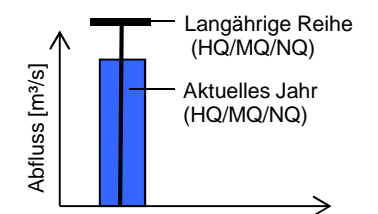


Vermunt 100073



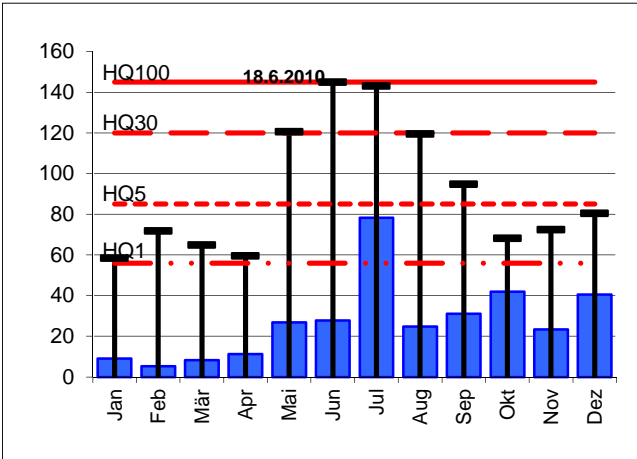
Station	Reihe	Langjährige Reihen [m³/s]						Werte 2014 [m³/s]			Abweichung [%] von langjähriger Reihe		
		NQ	MQ	HQ1	HQ5	HQ30	HQ100	NQ	MQ	HQ	NQ	MQ	HQ100
Leiblach, Unterhochsteg	1976-2013	0,030	3,17	56	85	120	145	0,206	2,78	78	+587%	-12%	-46%
Bregenzerach, Kennelbach	1951-2013	1,07	46,5	480	750	1.100	1.450	5,53	40,8	345	+417%	-12%	-76%
Dornbirnerach, Lauterach	1982-2013	0,238	7,06	120	180	270	325	0,919	6,49	118	+286%	-8%	-64%
Rhein, Lustenau	1976-2013	32	232	1180	1.800	2.600	3.200	65,6	244	1.330	+107%	+5%	-58%
Ill, Gisingen	1951-2013	3,58	65,4	240	405	590	820	5,29	62,3	277	+48%	-5%	-66%

Legende zu den Diagrammen

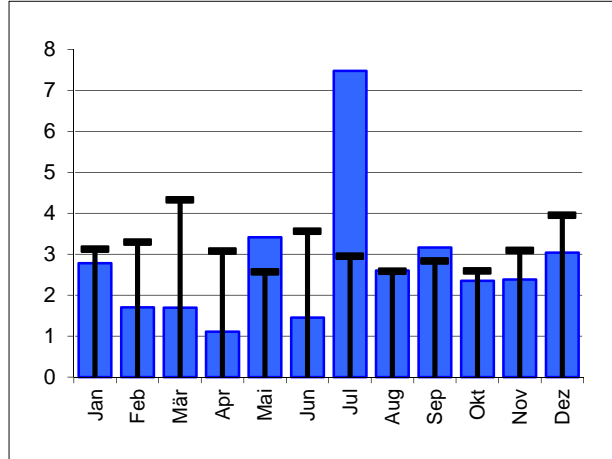


Leiblach, Unterhochsteg

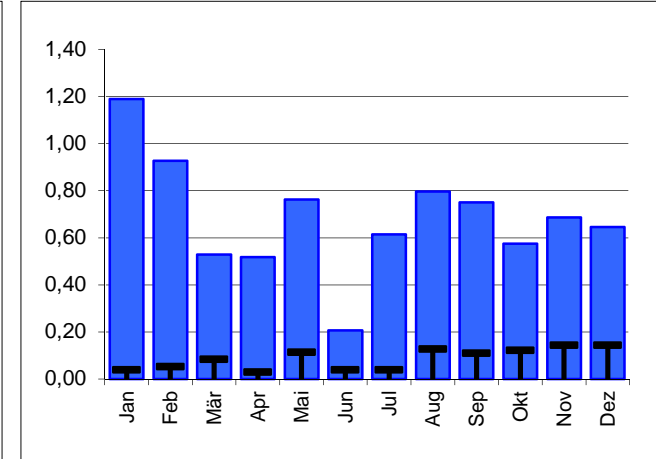
HQ



MQ

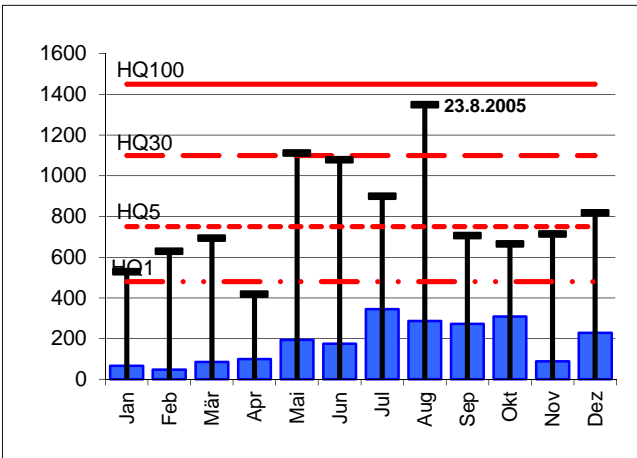


NQ

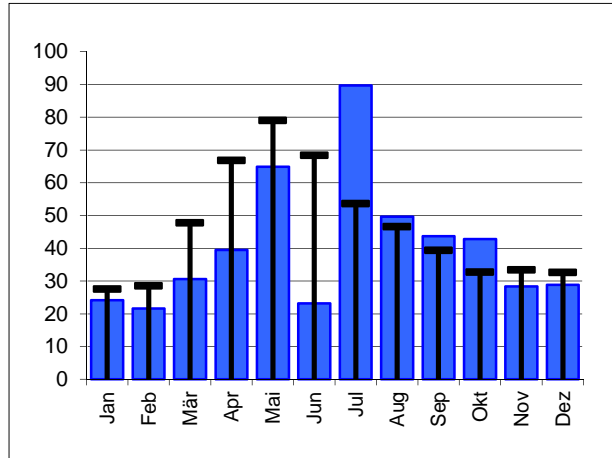


Bregenzerach, Kennelbach

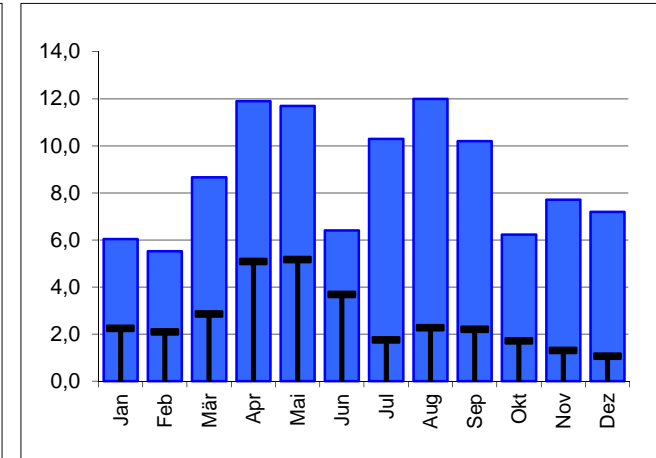
HQ



MQ

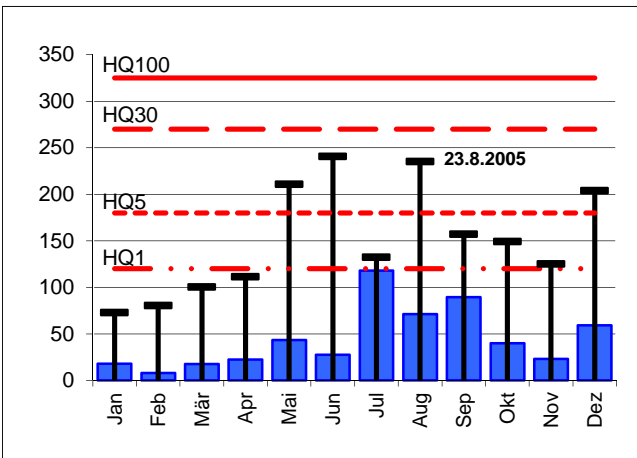


NQ

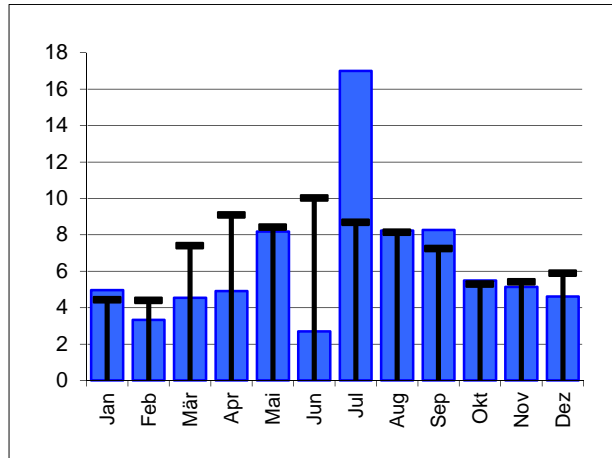


Dornbirnerach, Lauterach

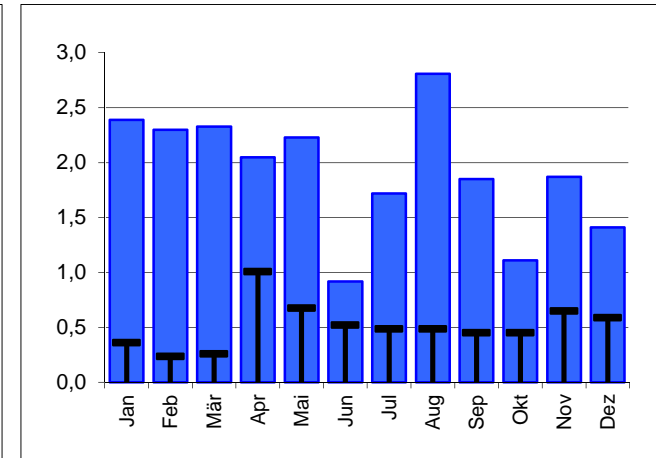
HQ



MQ

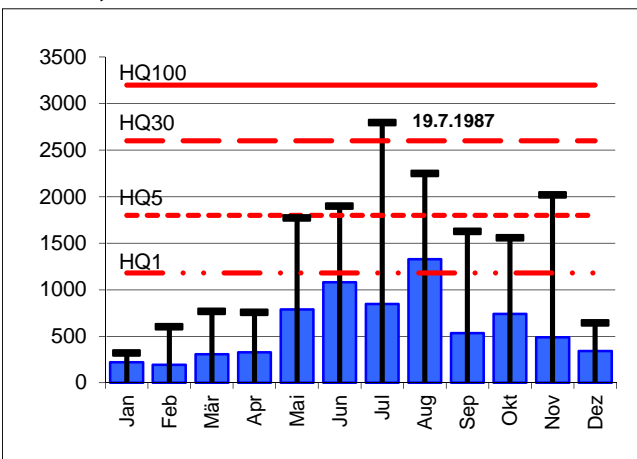


NQ

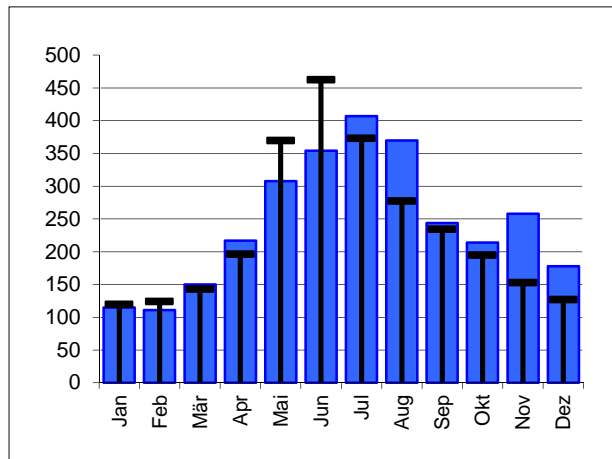


Rhein, Lustenau

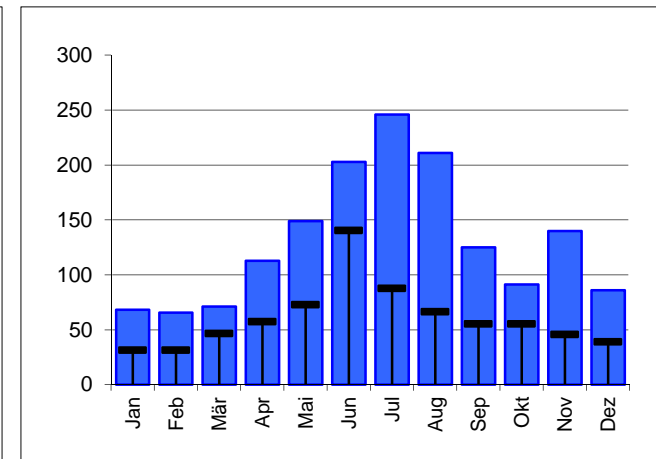
HQ



MQ

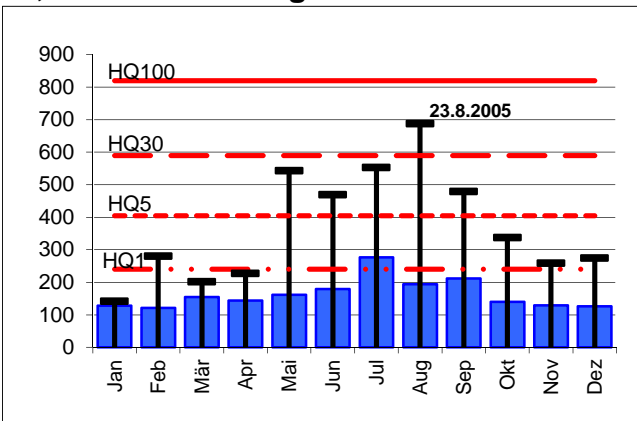


NQ

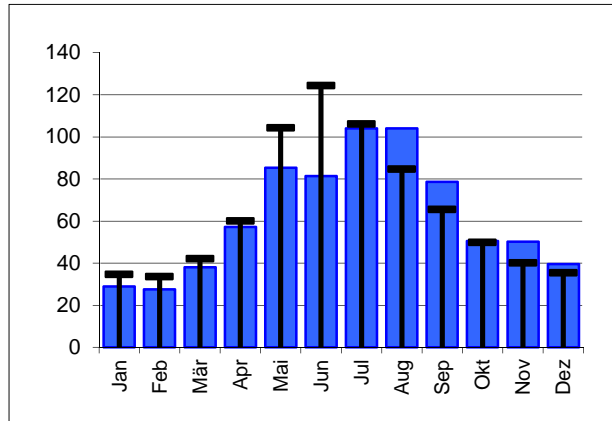


Ill, Feldkirch-Gisingen

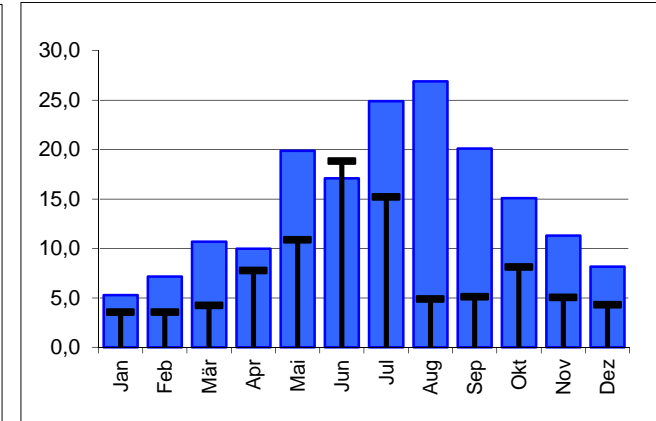
HQ



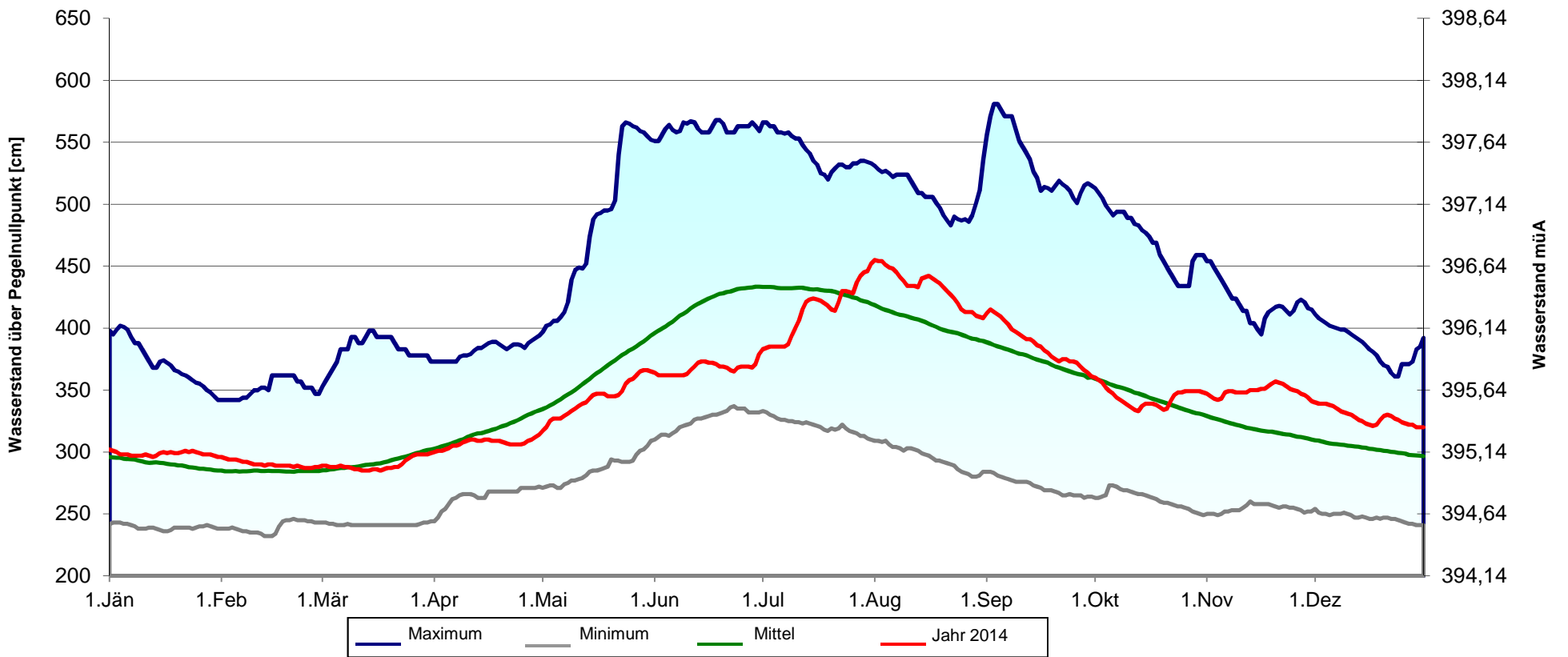
MQ



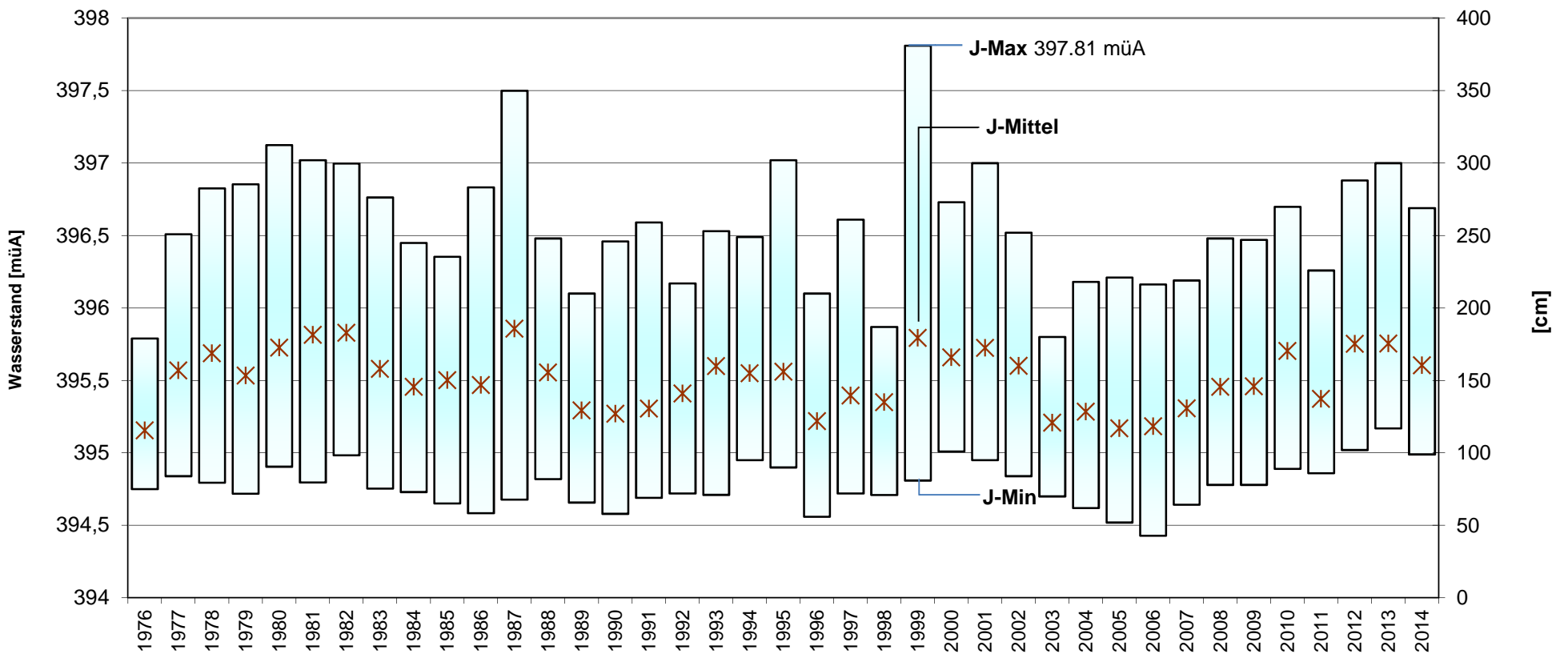
NQ



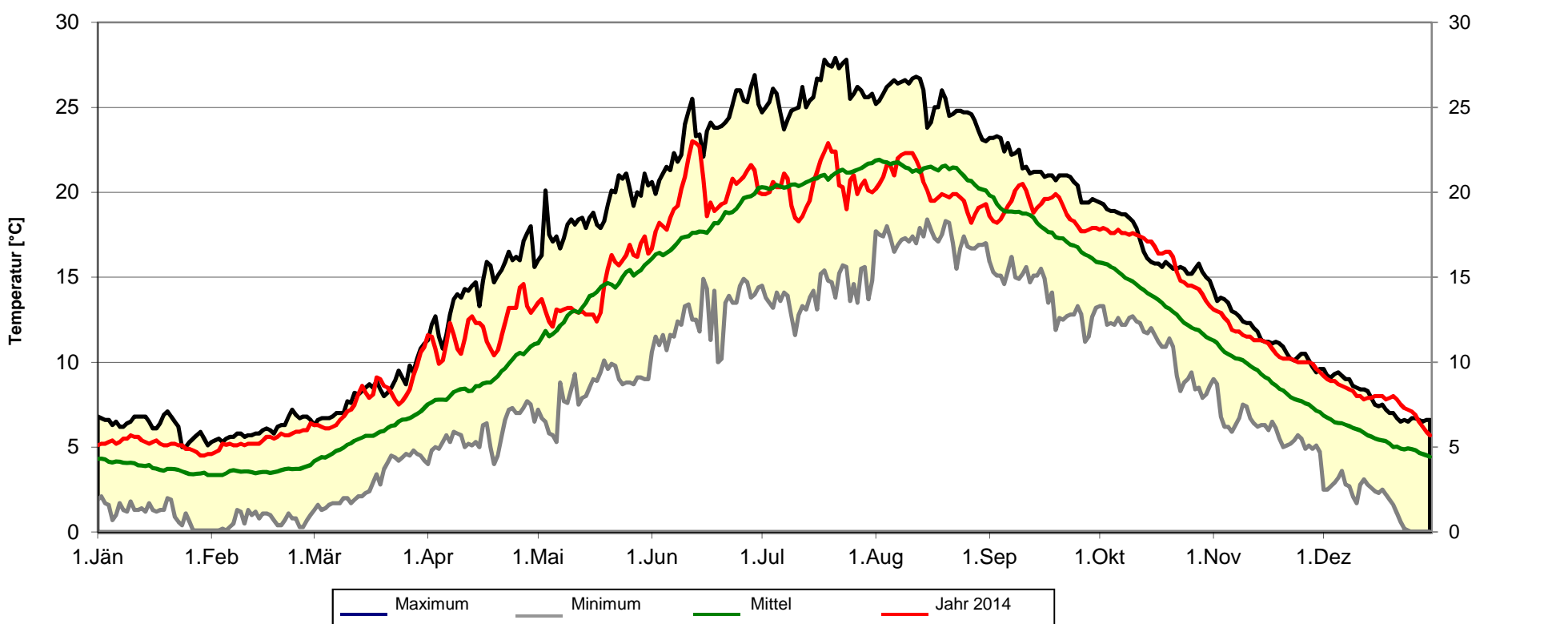
Wasserstandsbewegung von 1864 - 2014 (150 Jahre) - Pegelnullpunkt: 392,14 m. ü. Adria



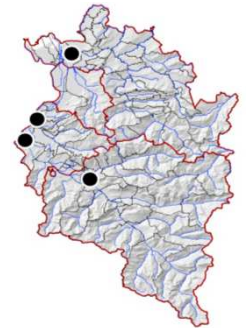
Wasserstandsbewegung von 1976 bis 2014 (Jahresminimum -maximum und -mittelwert)



Wassertemperatur im Tagesmittel (Messpunkt 50 cm unter Wasser)
Extremwerte und Mittel von 1976 - 2013 (37 Jahre)



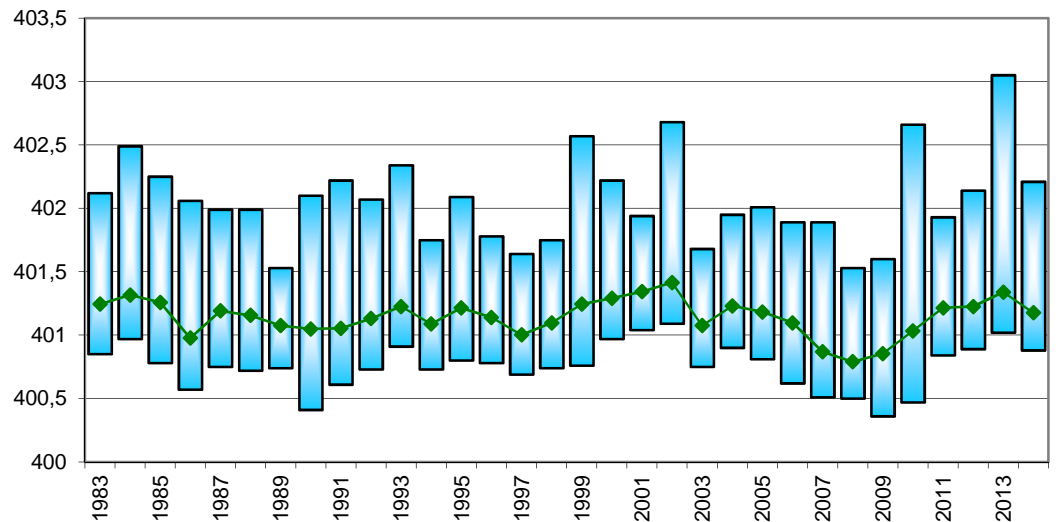
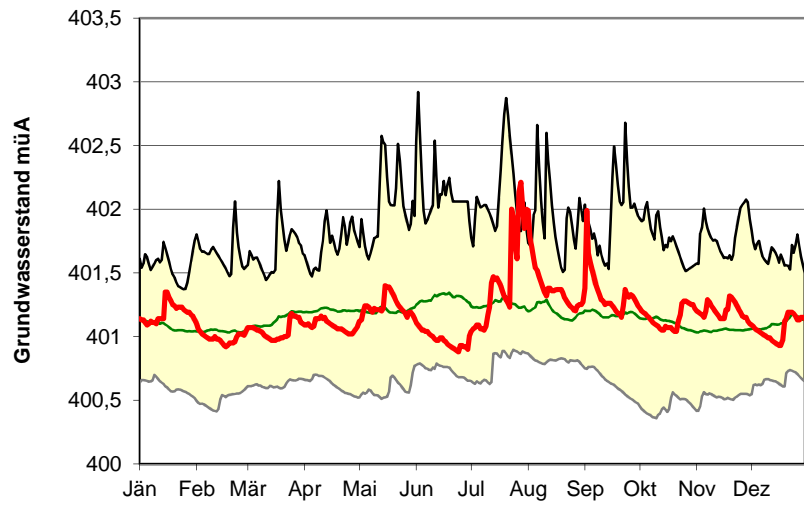
Grundwasser-Quantität



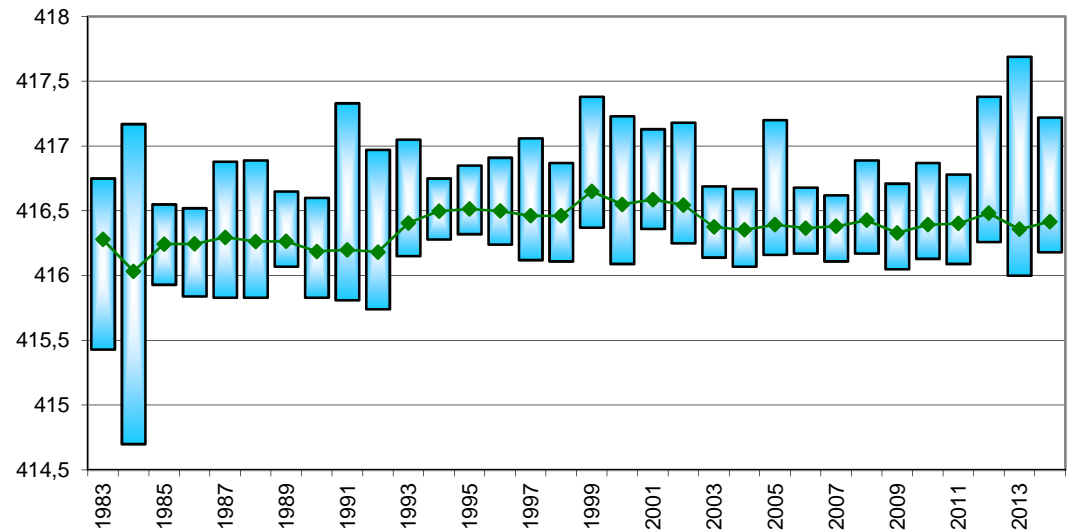
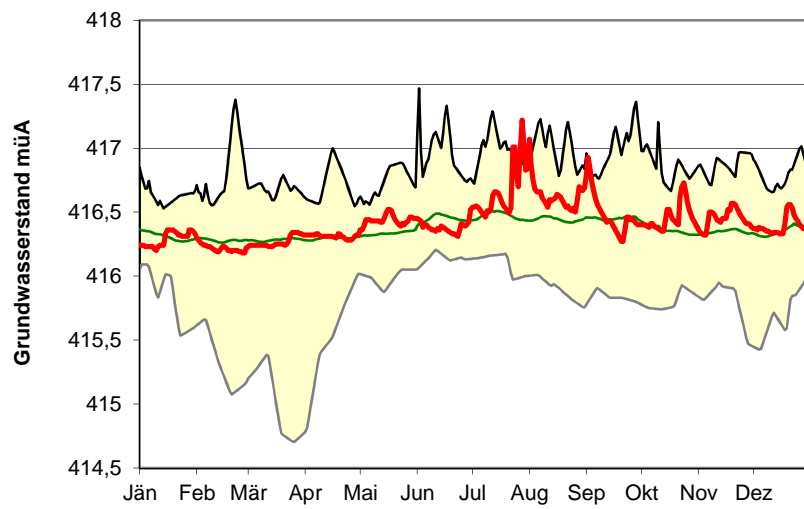
Verlauf Grundwasserstand 2014 mit Min-, Max und Mittelwerten über die gesamte Beobachtungsdauer

Langjährige Reihe (n=30) Mittelwert

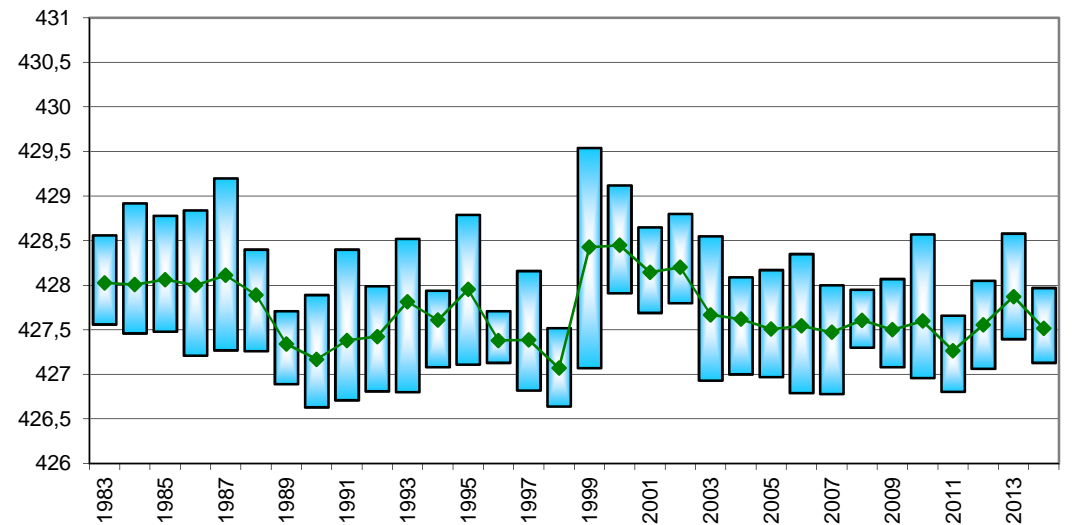
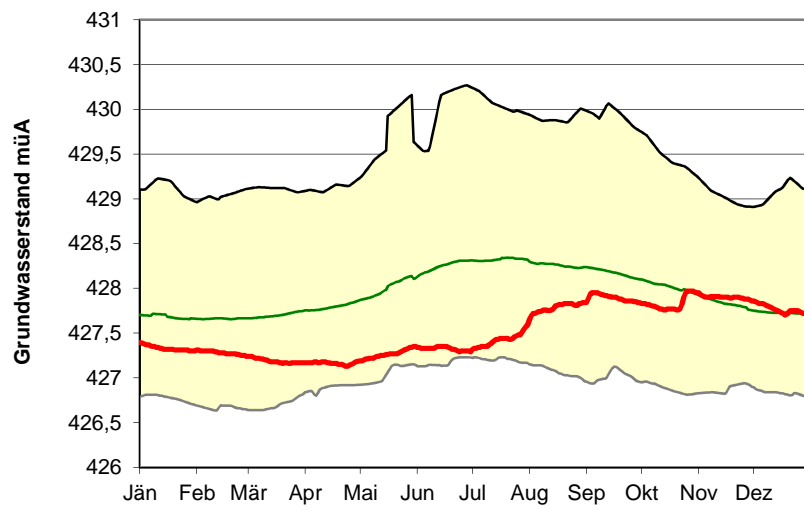
Lauterach 50.2.10 (GOK = 403,42 müA)



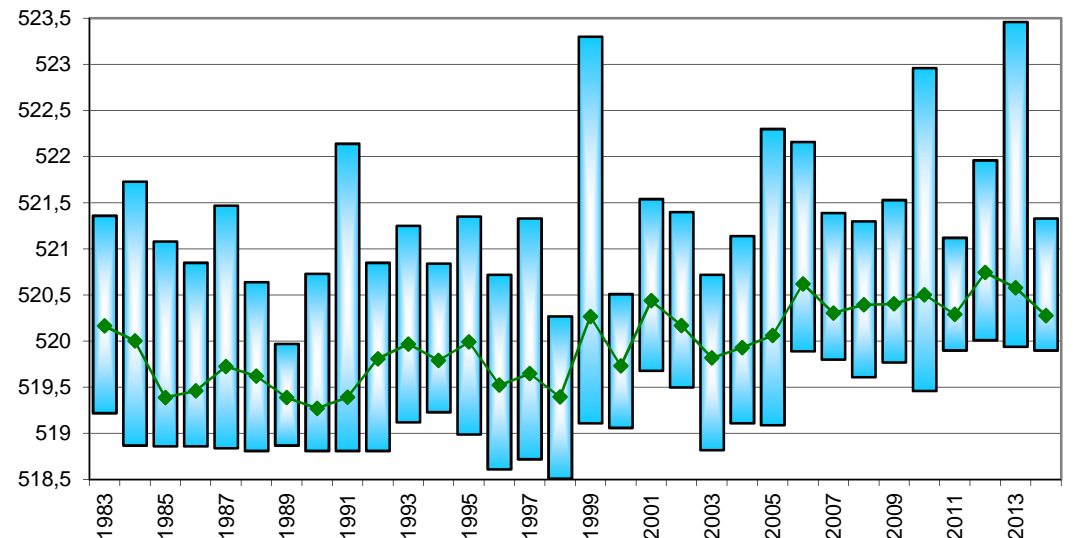
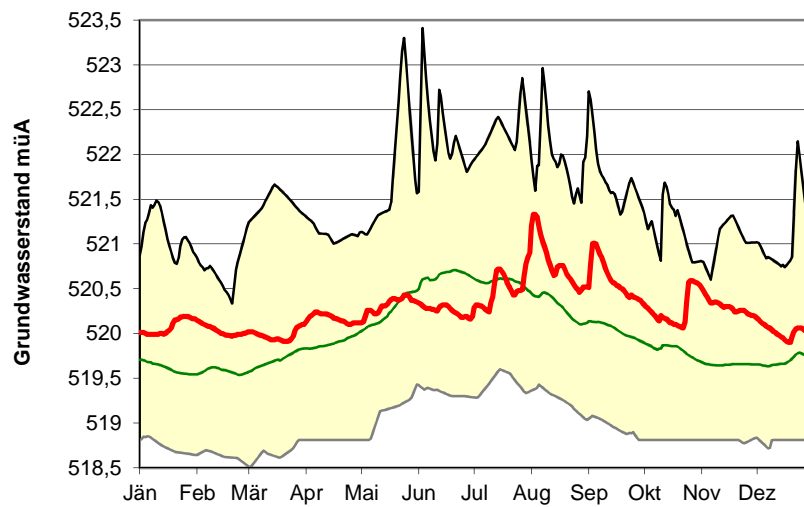
Koblach 50.4.03A (GOK = 418,49 müA)



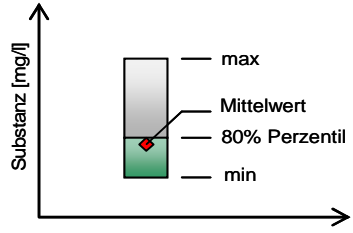
Feldkirch Nofels 01.32.24 A (GOK = 433,00 müA)



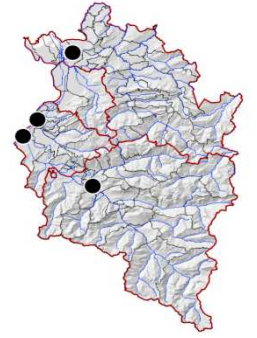
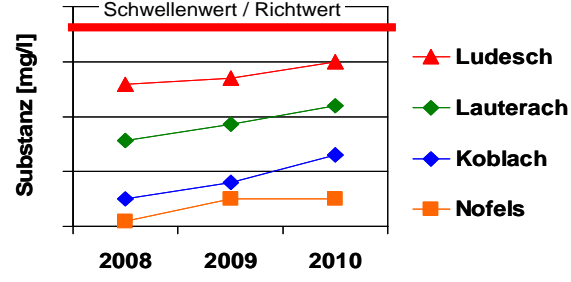
Ludesch 06.36.08 (GOK = 542,57 müA)



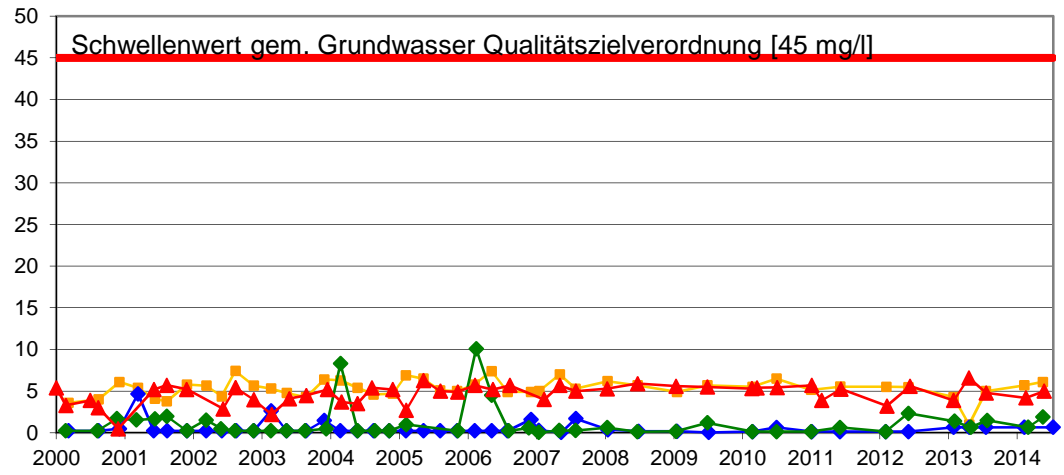
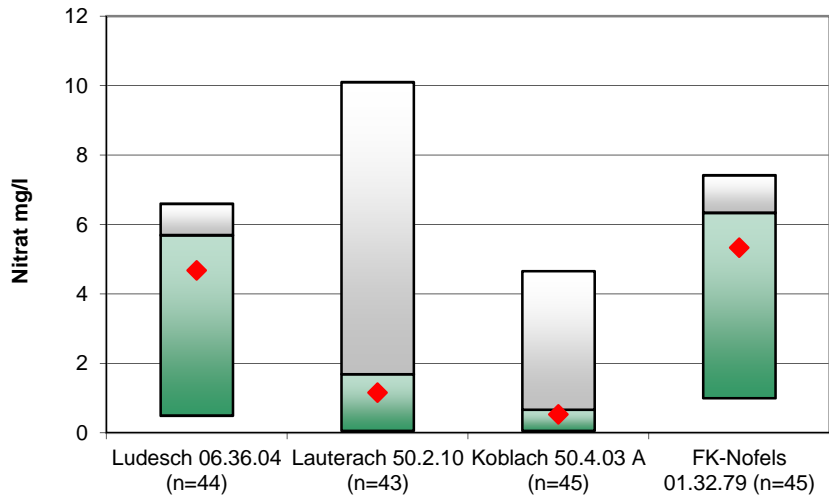
Qualitätsuntersuchungen im Rahmen der GZÜV ab 2000



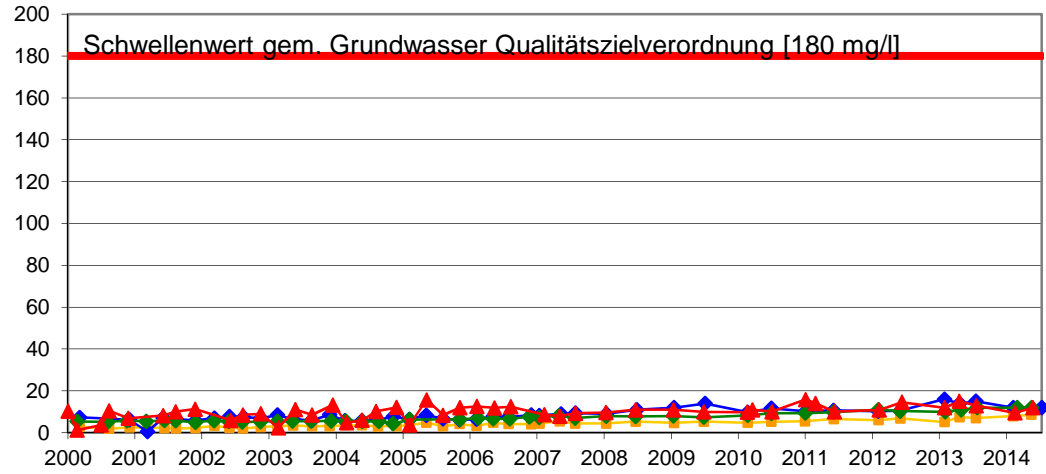
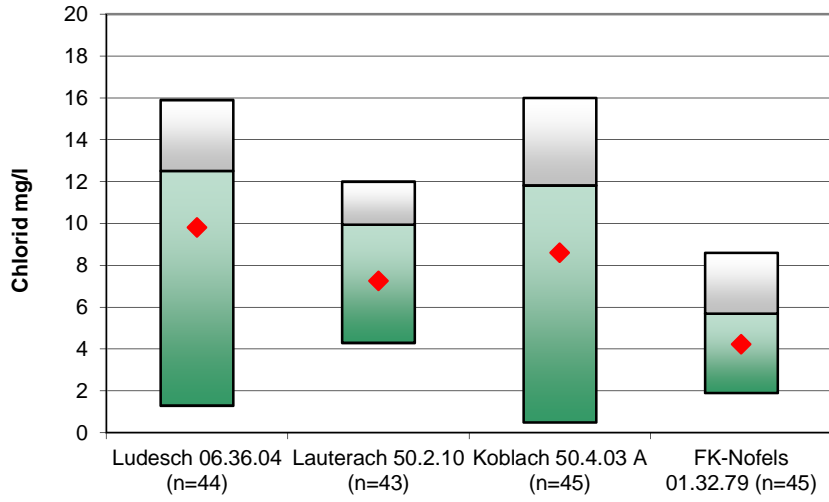
Verlauf der gemessenen Werte ab 2000



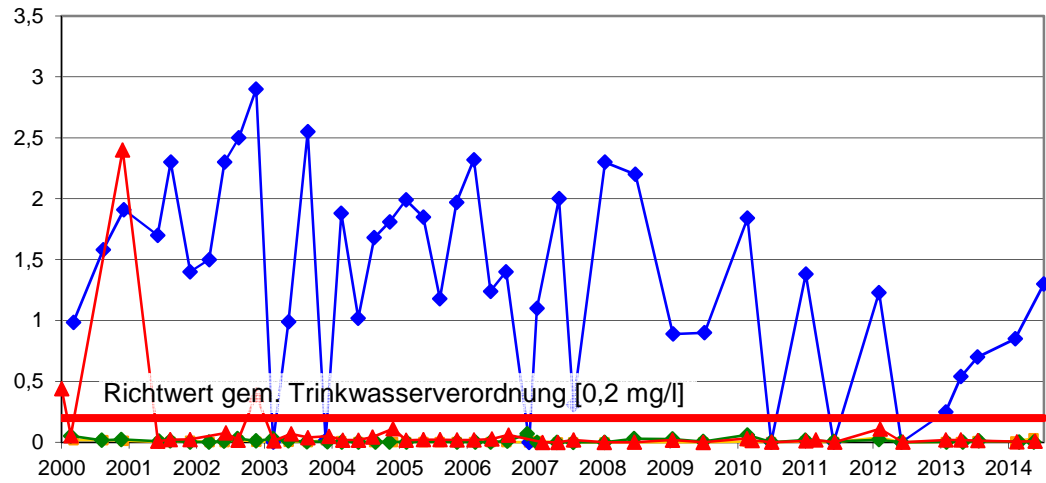
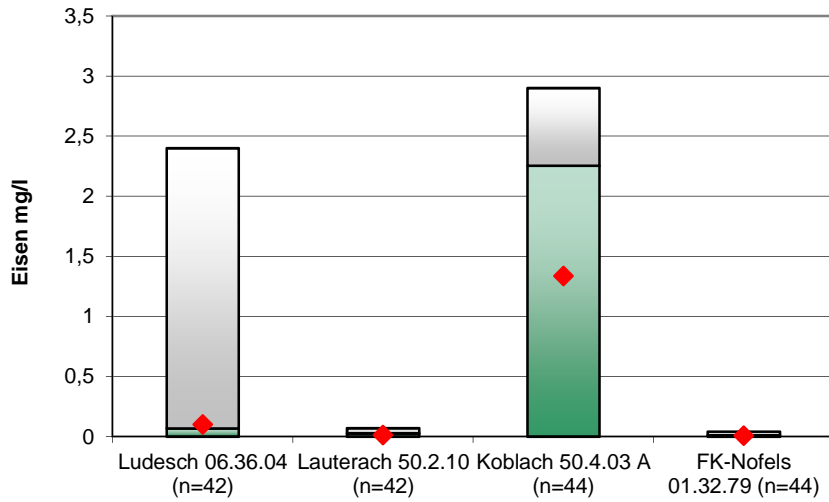
Nitrat



Chlorid



Eisen



Mangan

