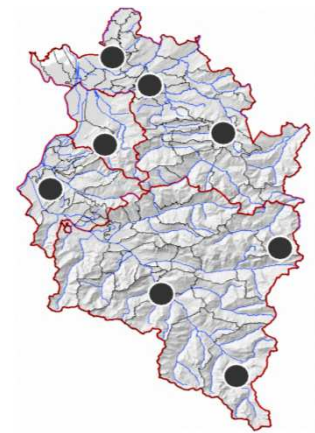
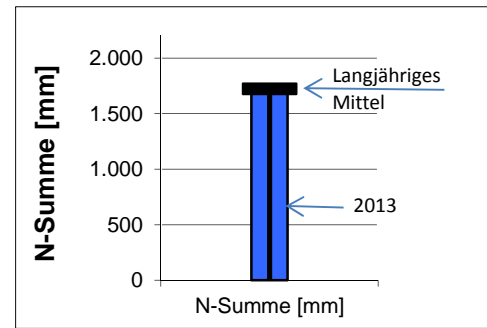


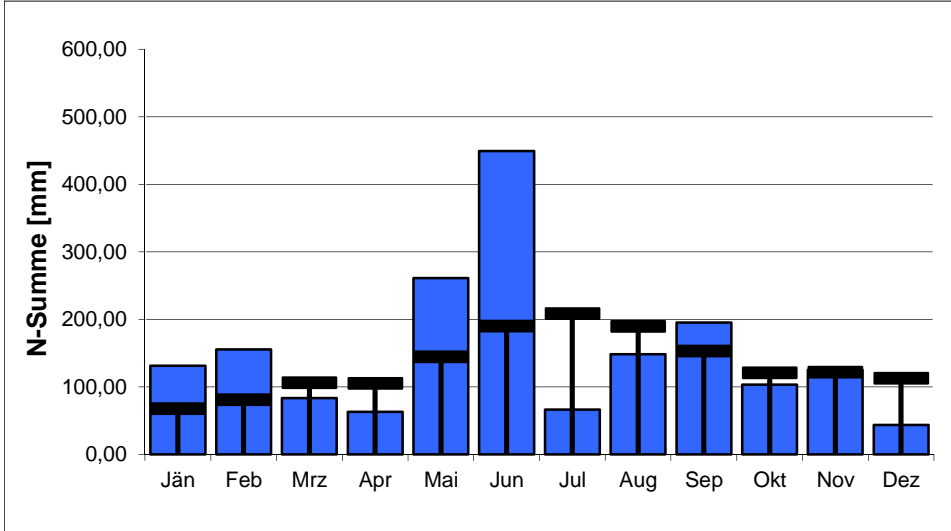
- Anlage 1: Niederschlag
- Anlage 2: Oberflächengewässer, Abfluss
- Anlage 3: Bodenseewasserstand und –temperatur
- Anlage 4: Grundwasser – Quantität
- Anlage 5: Grundwasser – Qualität

Station	Summe 2013 [mm]	Langjähriges Mittel (LM)	Abweichung gegenüber LM	N-Tage 2013
Bregenz Altreuteweg	1.826	1.598	+14%	176
Alberschwende	1.984	1.883	+5%	199
Schönenbach	2.207	2.267	-3%	184
Ebnit	2.473	2.164	+14%	198
Feldkirch	1.180	1.234	-4%	173
Zürs	1.392	1.589	-12%	195
Rodund	1.254	1.275	-2%	187
Vermunt	1.789	1.759	+2%	220
Mittelwerte 2013	1.763	1.721	+2%	192

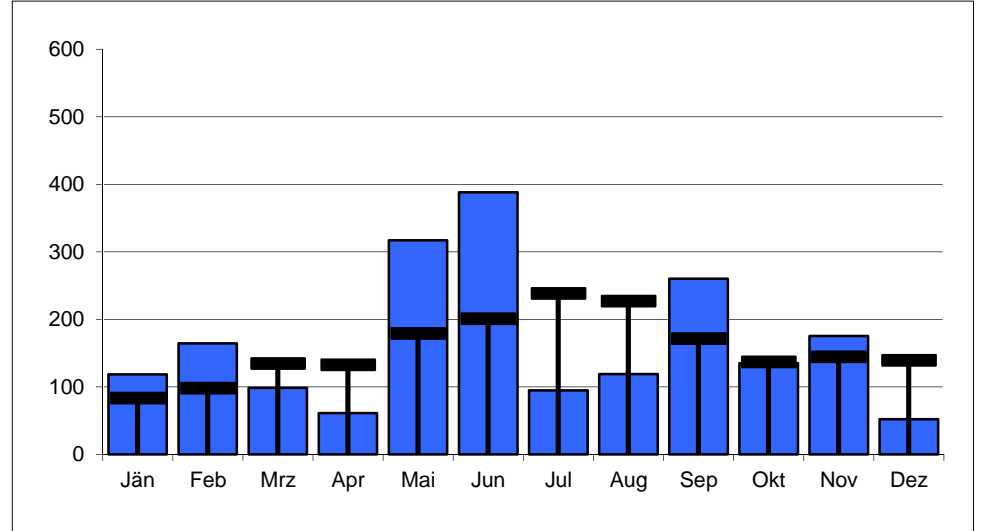
mittlere Jahressumme 2013 und langjähriges Mittel



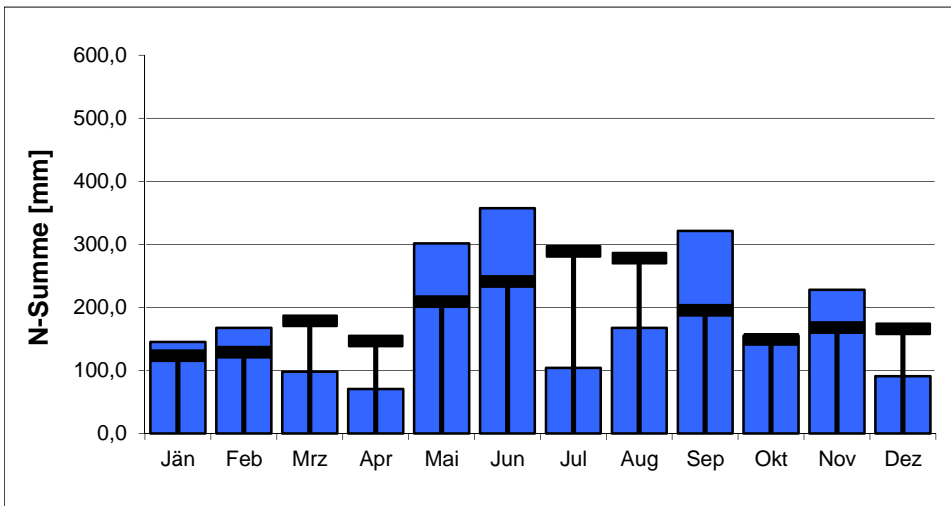
Bregenz Altreuteweg 100776



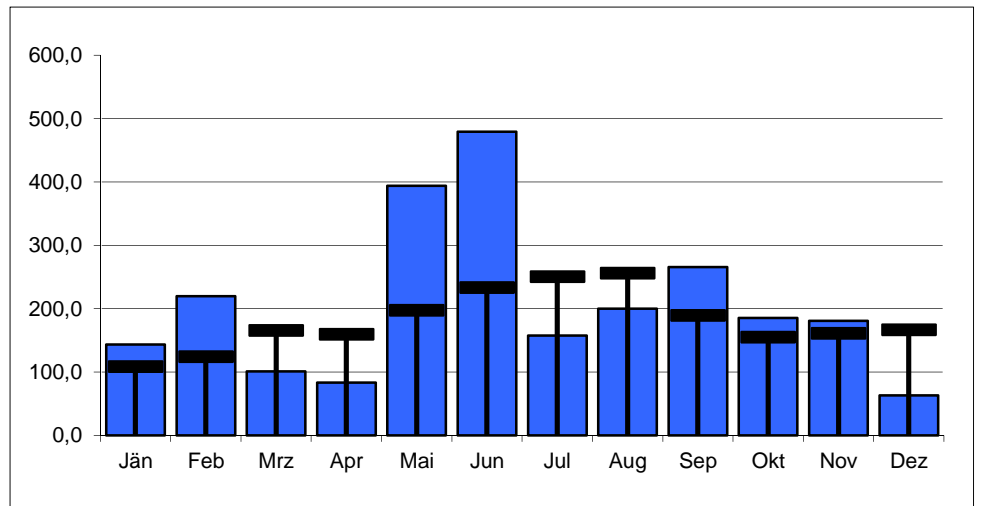
Alberschwende 100842



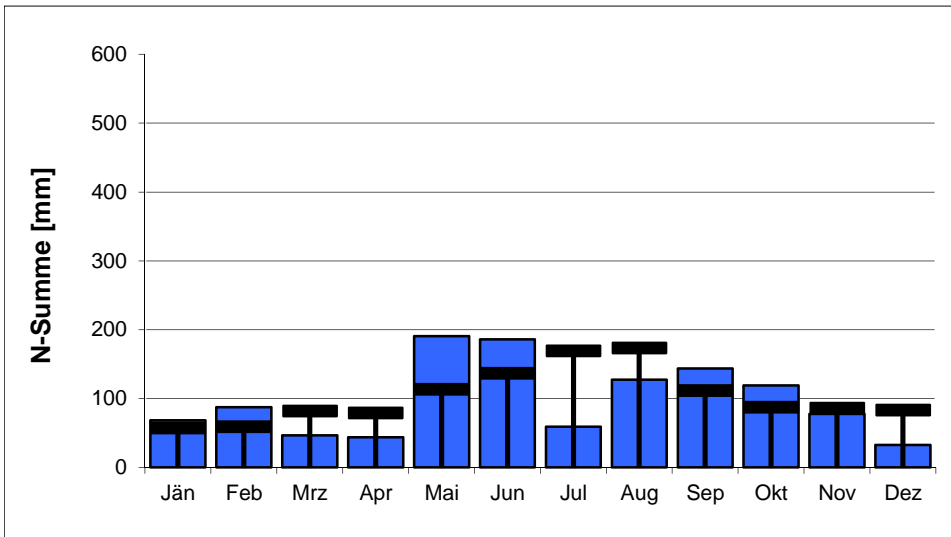
Schönenbach 100651



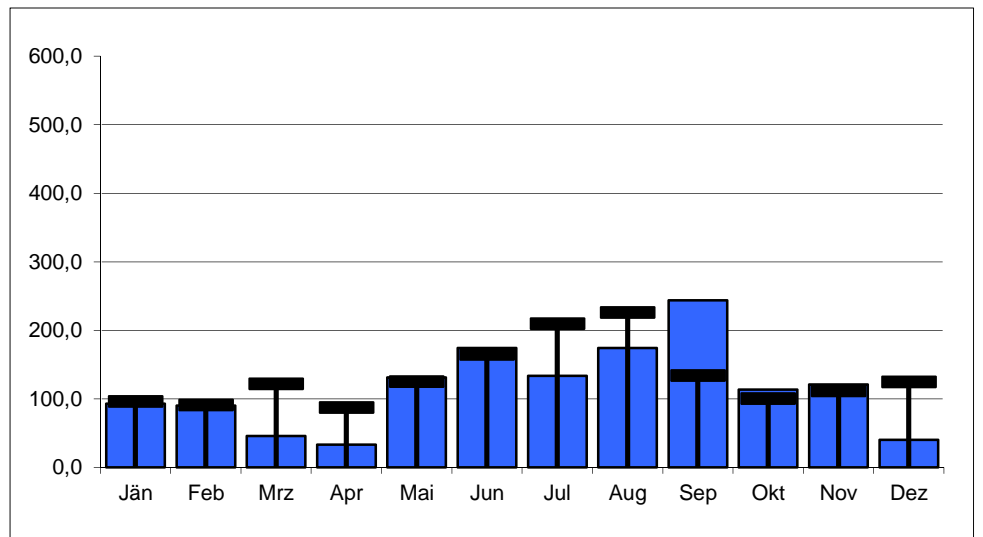
Ebnit 100453



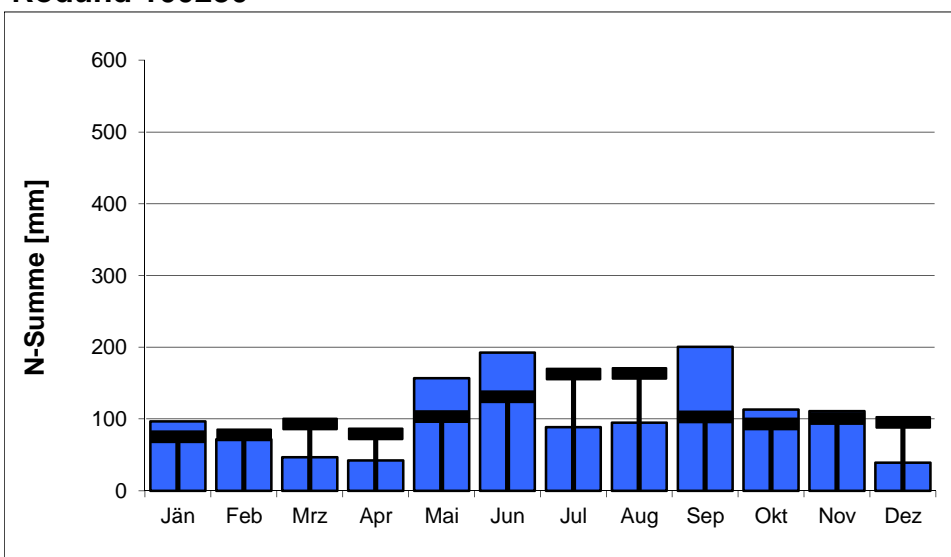
Feldkirch 100396



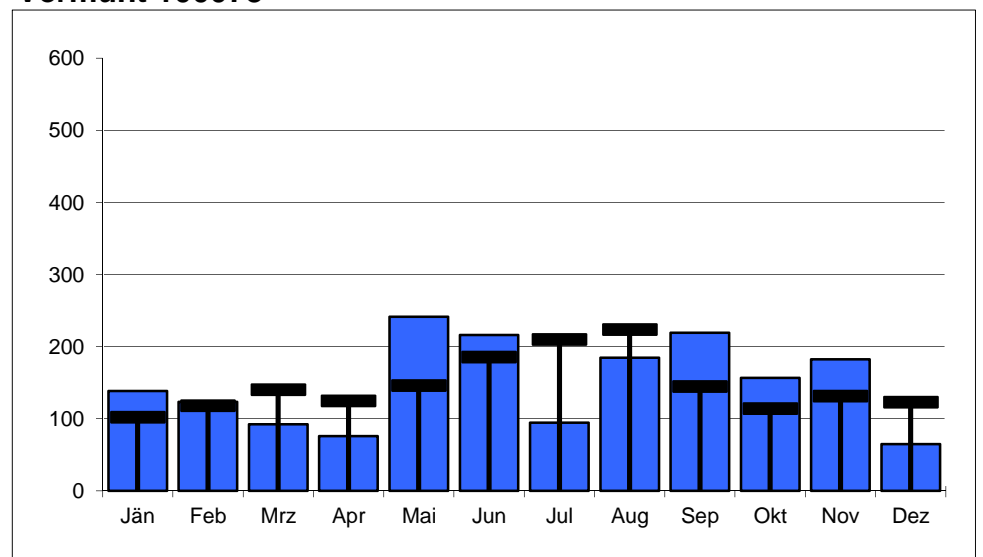
Zürs 101113



Rodund 100230

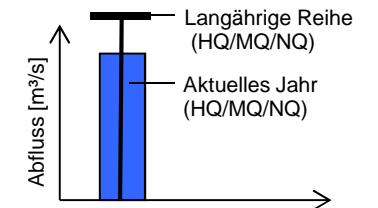


Vermunt 100073



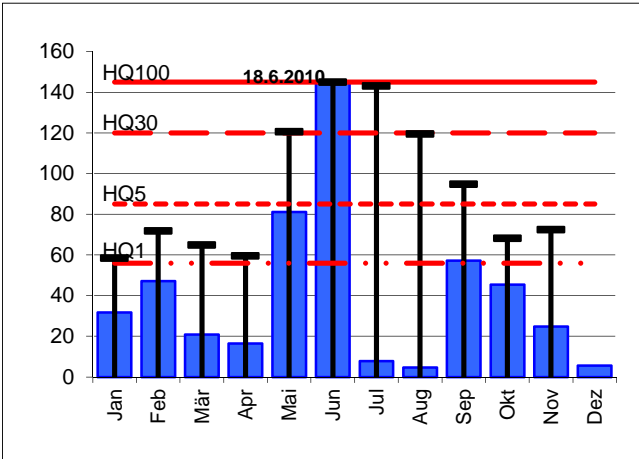
Station	Reihe	Langjährige Reihen [m³/s]						Werte 2013 [m³/s]			Abweichung [%] von langjähriger Reihe		
		NQ	MQ	HQ1	HQ5	HQ30	HQ100	NQ	MQ	HQ	NQ	MQ	HQ100
Leiblach, Unterhochsteg	1976-2013	0,030	3,17	56	85	120	145	0,169	3,86	145	+463%	+22%	+
Bregenzerach, Kennelbach	1951-2013	1,07	46,5	480	750	1.100	1.450	1,76	51,6	1.079	+64%	+11%	-26%
Dornbirnerach, Lauterach	1982-2013	0,238	7,06	120	180	270	325	0,693	8,88	241	+191%	+26%	-26%
Rhein, Lustenau	1976-2013	32	232	1180	1.800	2.600	3.200	73,9	239	1.225	+133%	+3%	-62%
Ill, Gisingen	1951-2013	3,58	65,4	240	405	590	820	4,35	69,9	374	+22%	+7%	-54%

Legende zu den Diagrammen

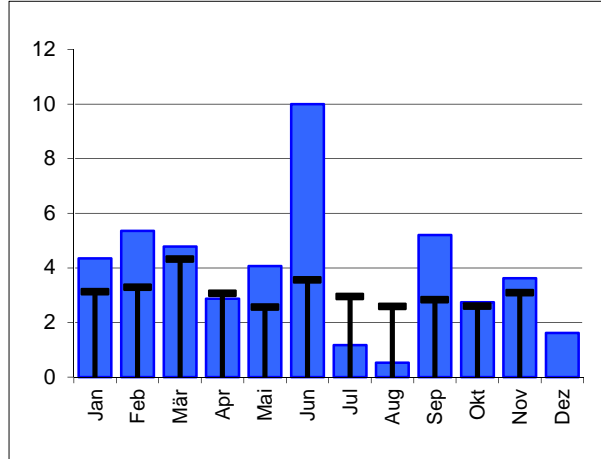


Leiblach, Unterhochsteg

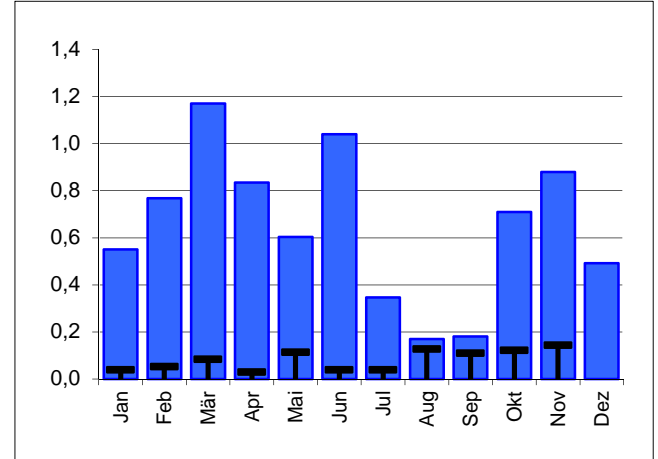
HQ



MQ

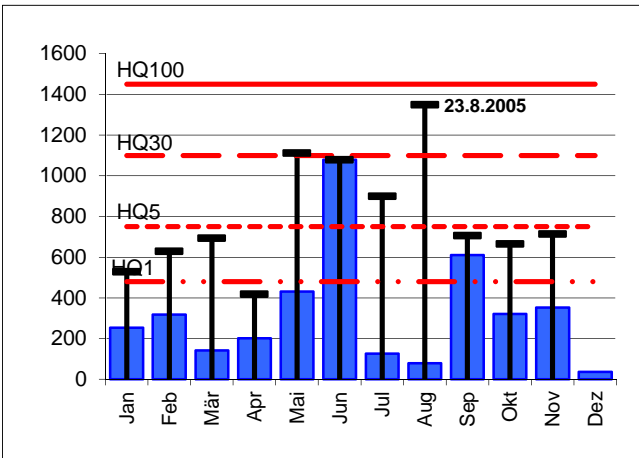


NQ

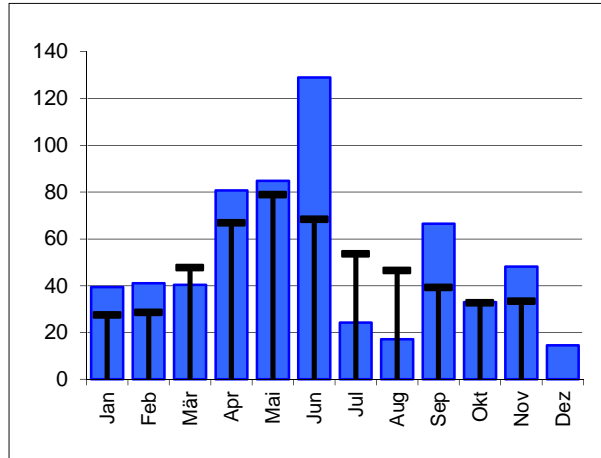


Bregenzerach, Kennelbach

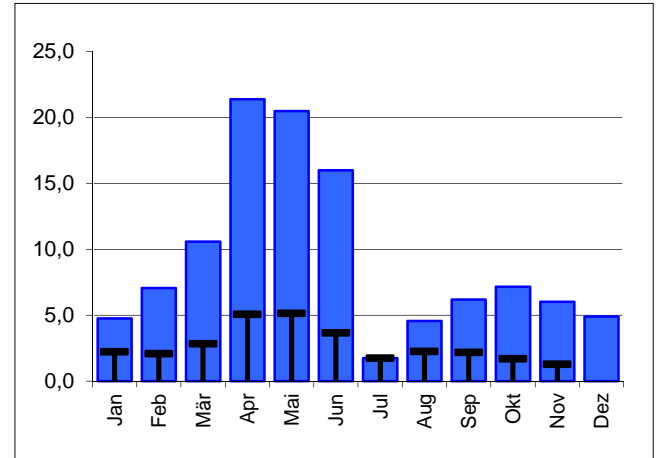
HQ



MQ

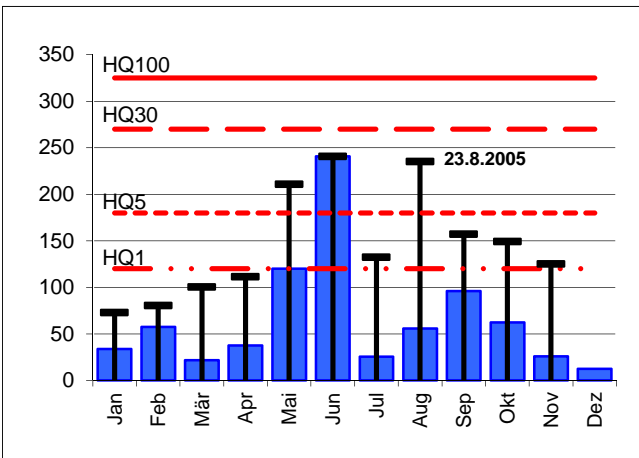


NQ

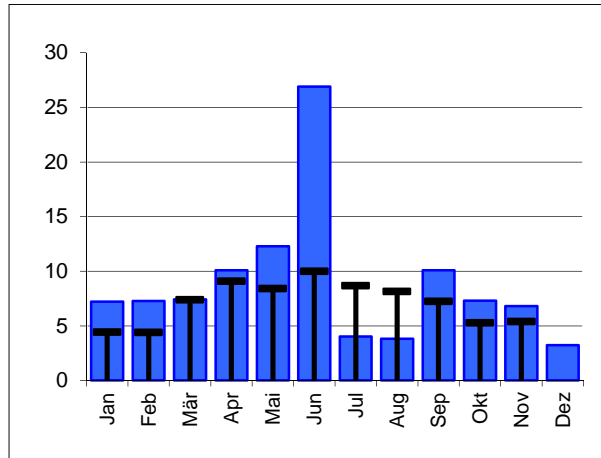


Dornbirnerach, Lauterach

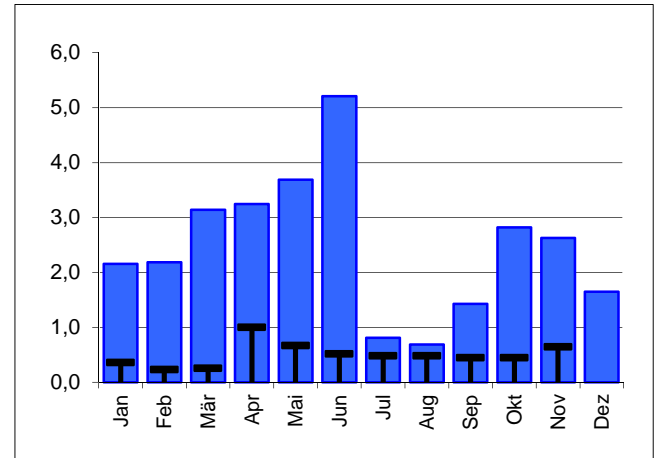
HQ



MQ

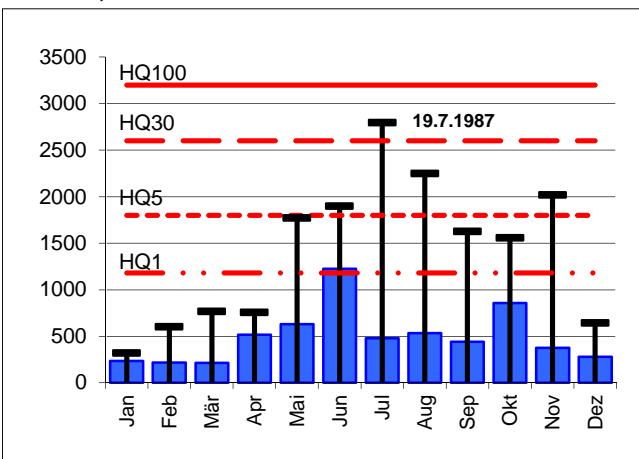


NQ

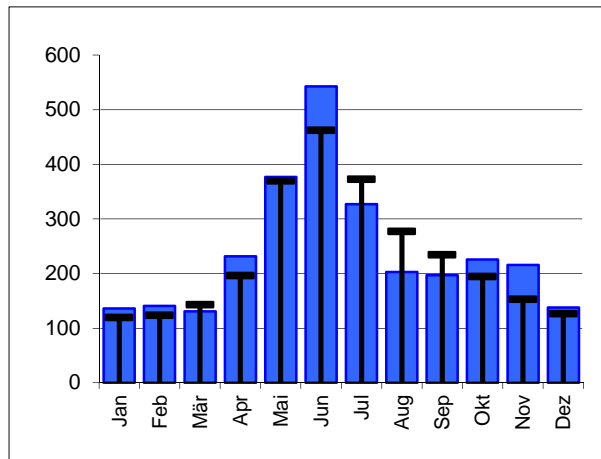


Rhein, Lustenau

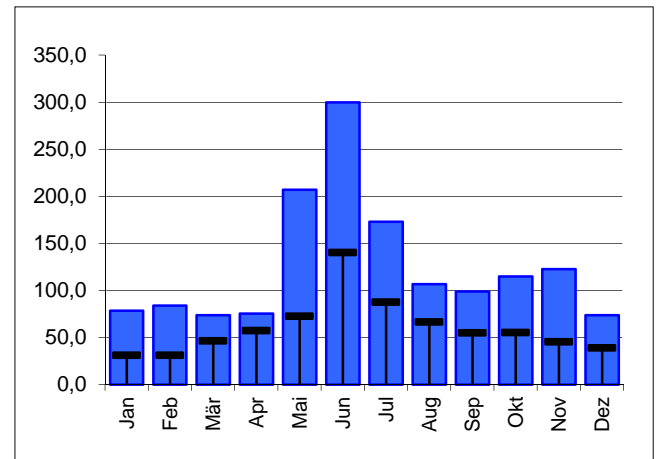
HQ



MQ

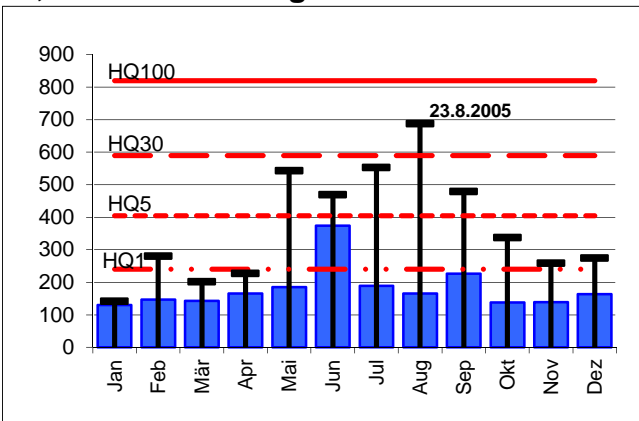


NQ

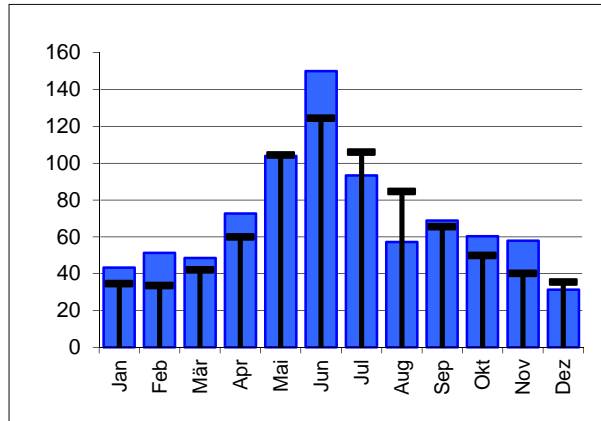


Ill, Feldkirch-Gisingen

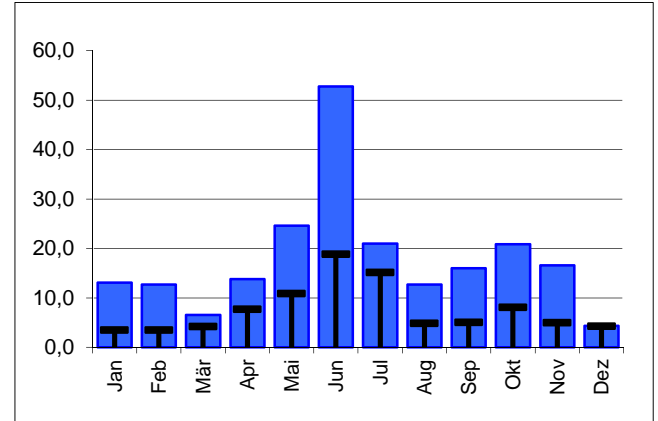
HQ



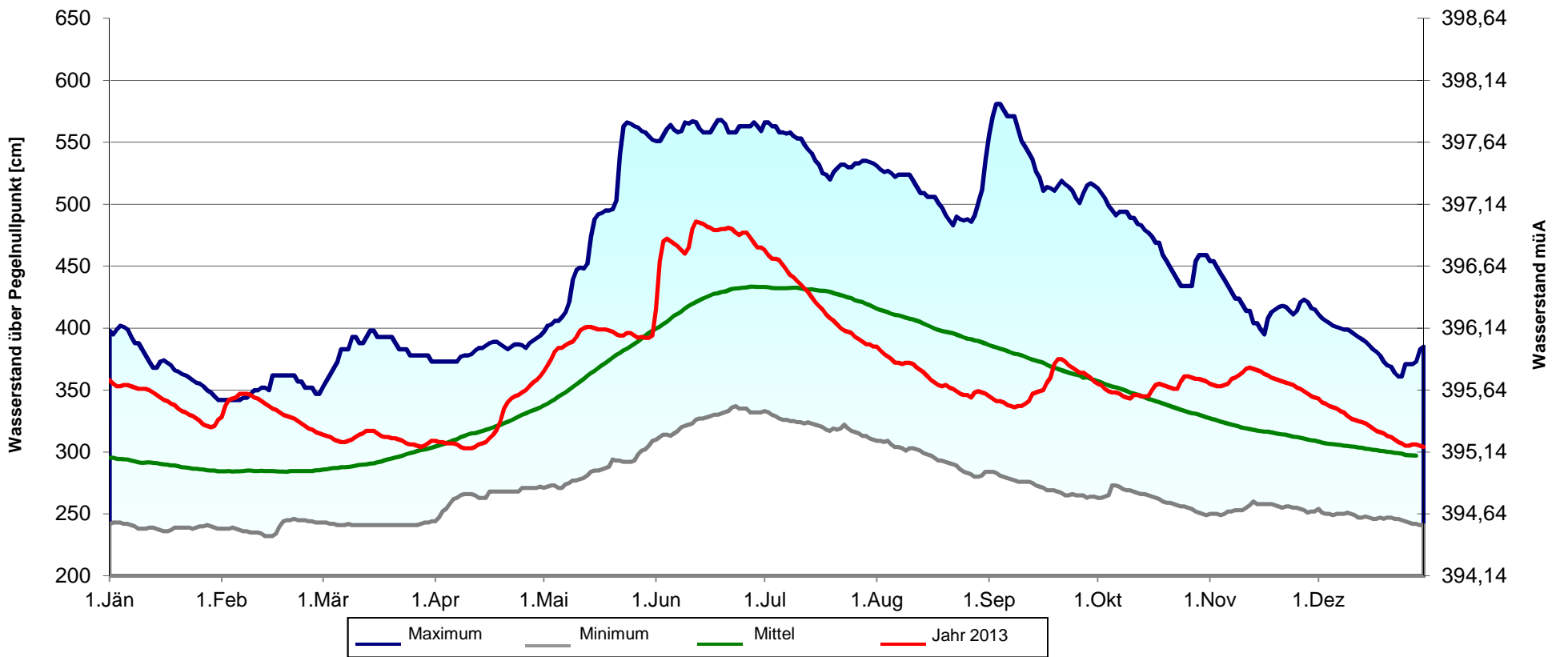
MQ



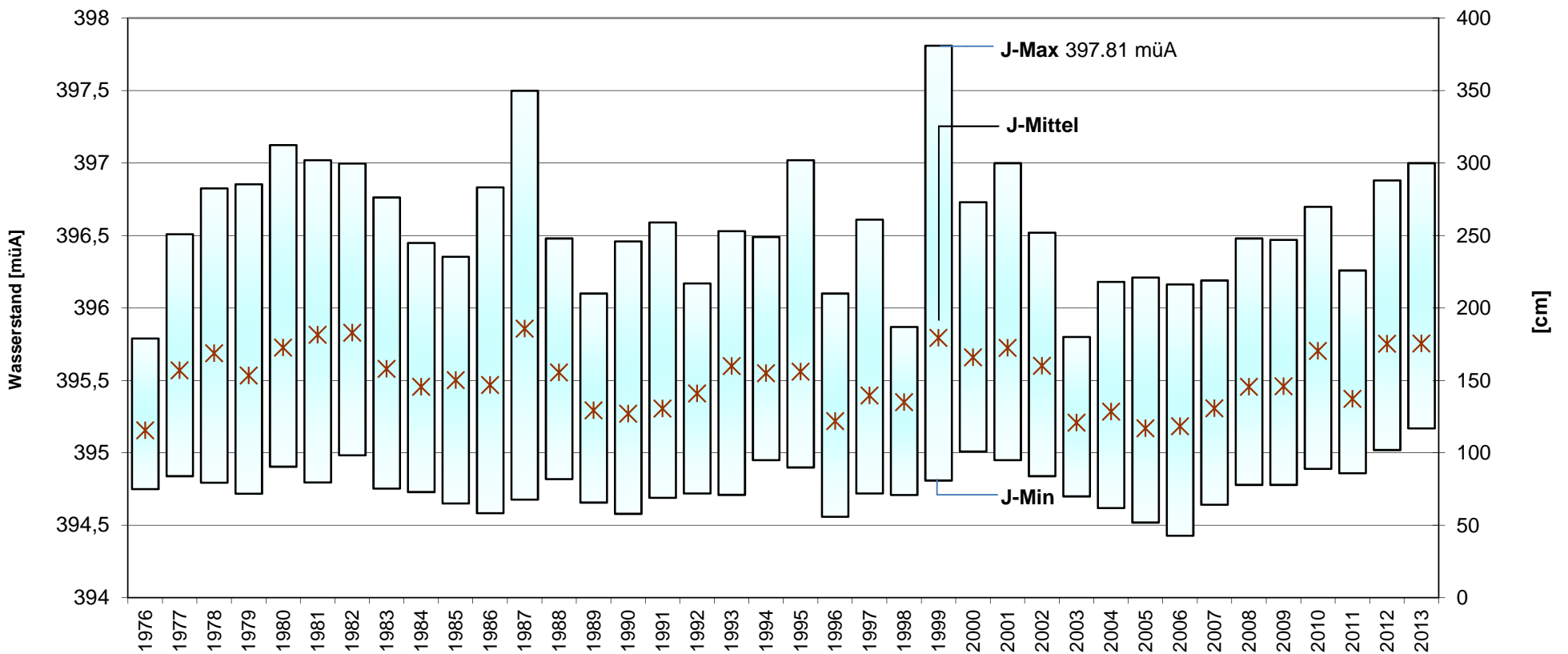
NQ



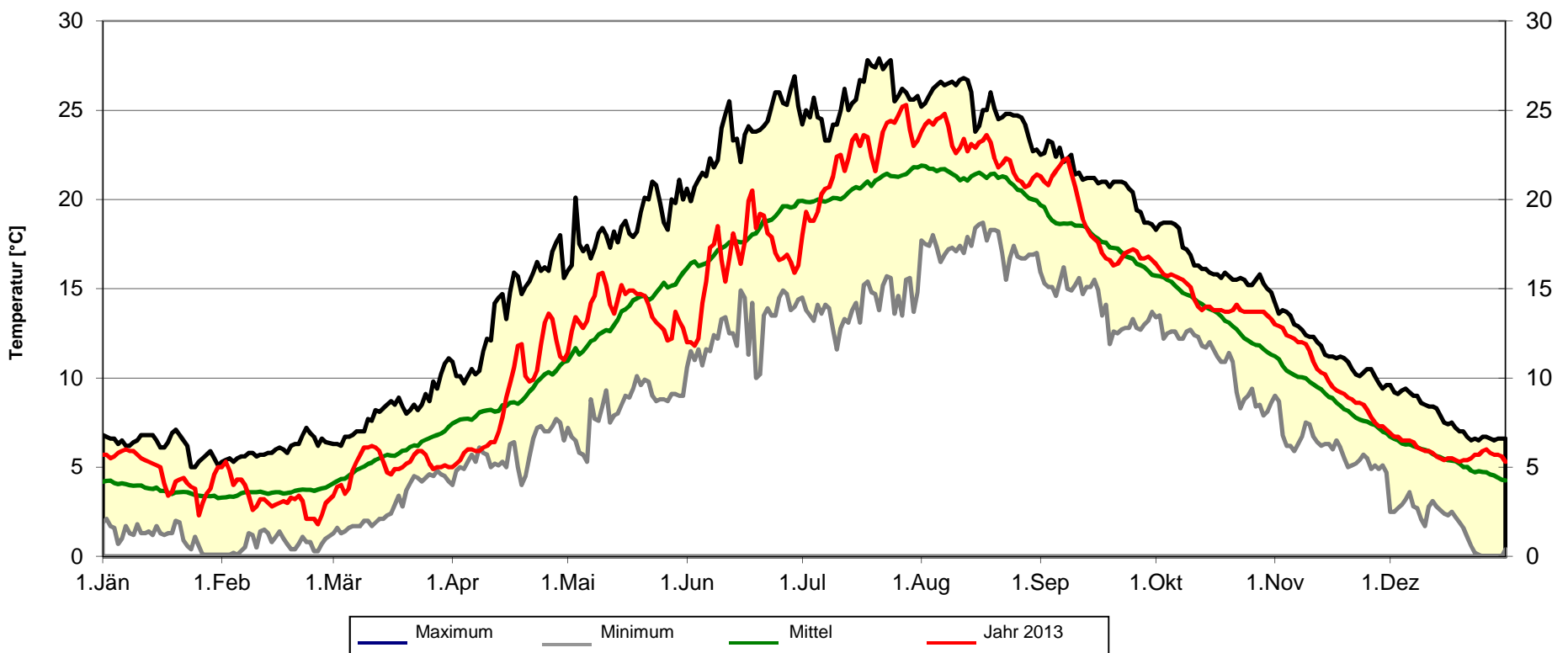
Wasserstandsbewegung von 1864 - 2013 (149 Jahre) - Pegelnullpunkt: 392,14 m. ü. Adria



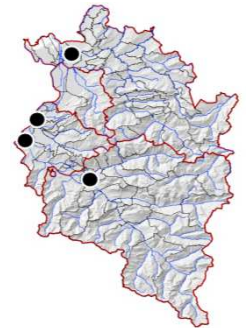
Wasserstandsbewegung von 1976 bis 2013 (Jahresminimum -maximum und -mittelwert)



Wassertemperatur im Tagesmittel (Messpunkt 50 cm unter Wasser)
Extremwerte und Mittel von 1976 - 2007 (31 Jahre)



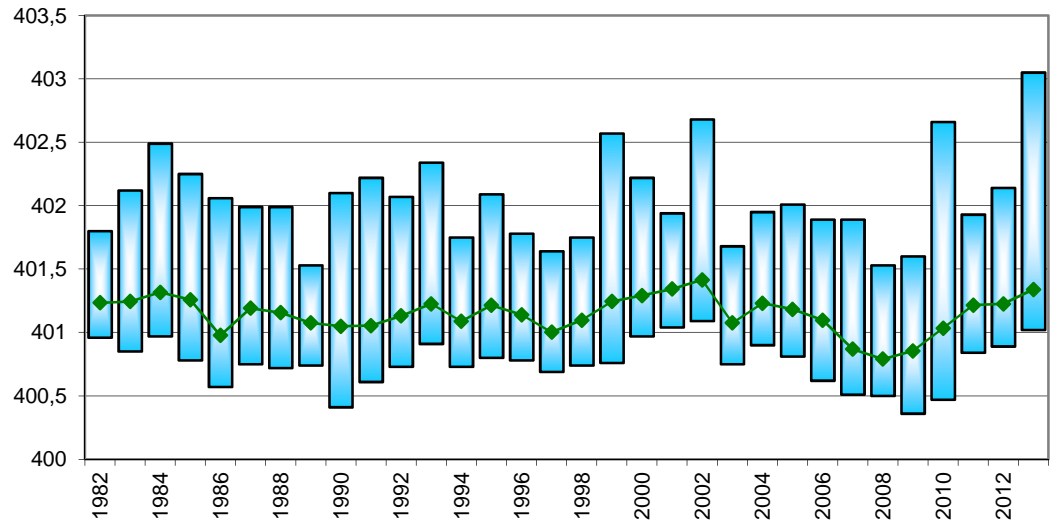
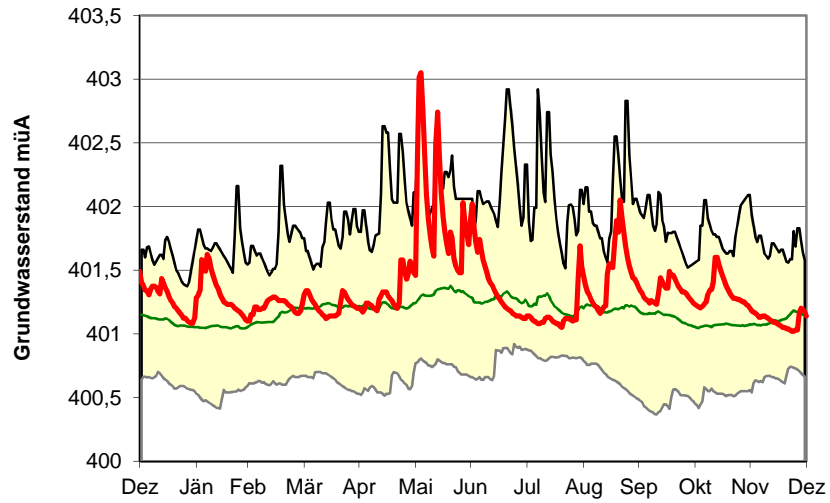
Grundwasser-Quantität



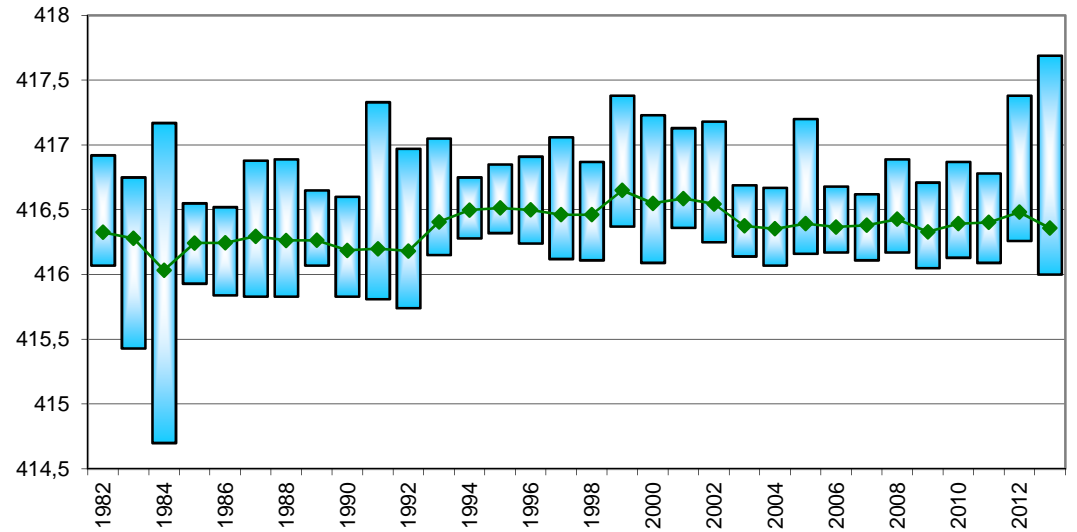
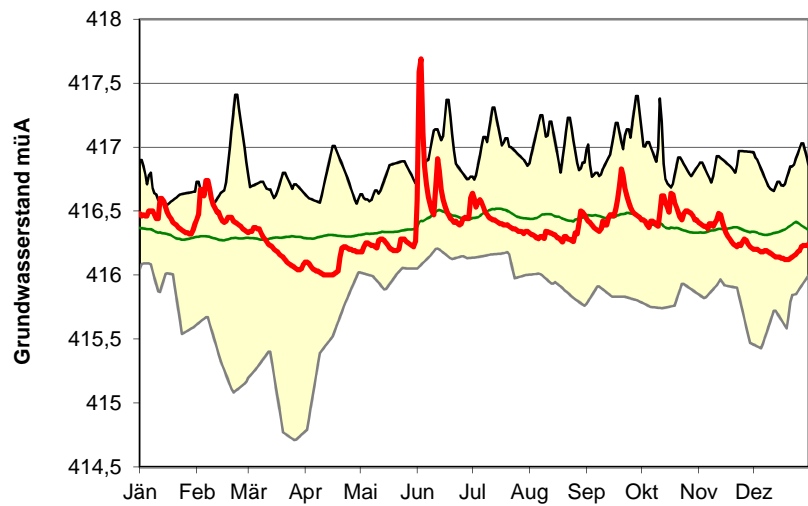
Verlauf Grundwasserstand 2013 mit Min-, Max und Mittelwerten über die gesamte Beobachtungsdauer

Langjährige Reihe (n=30) Mittelwert

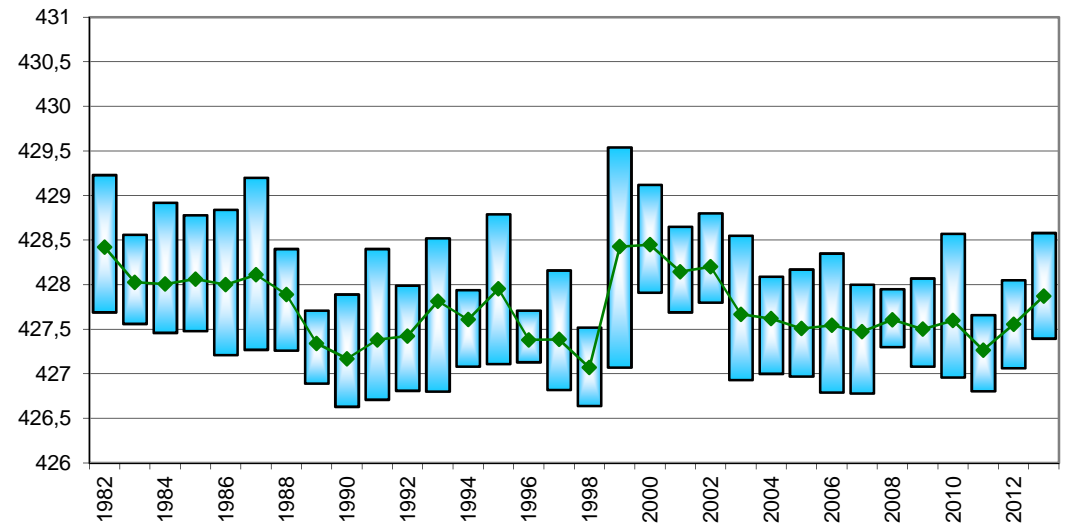
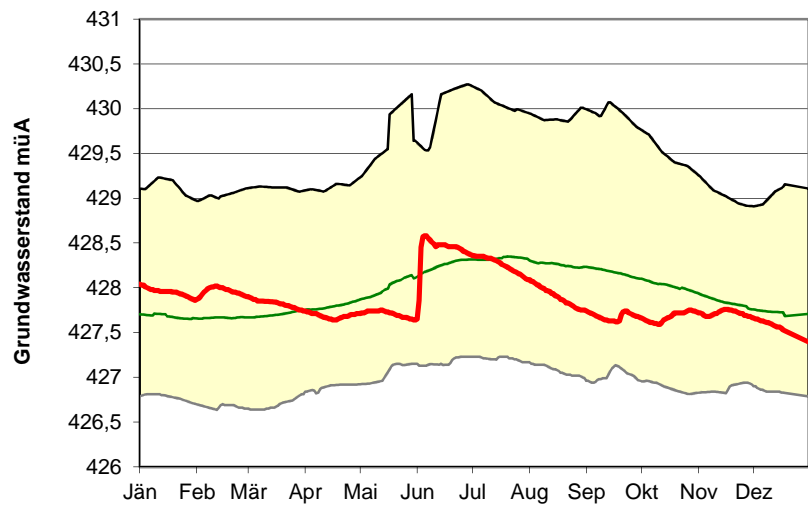
Lauterach 50.2.10 (GOK = 403,42 müA)



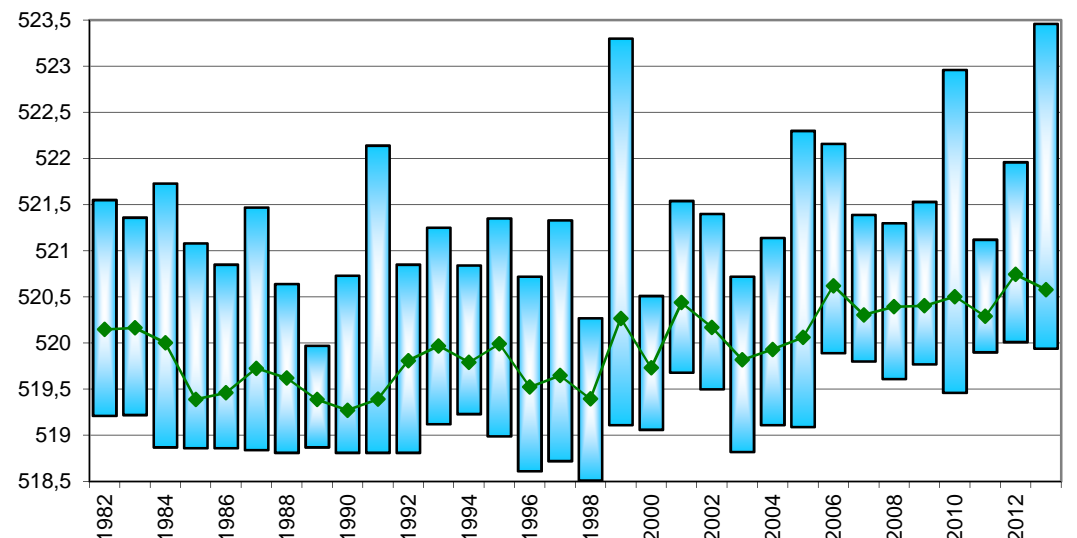
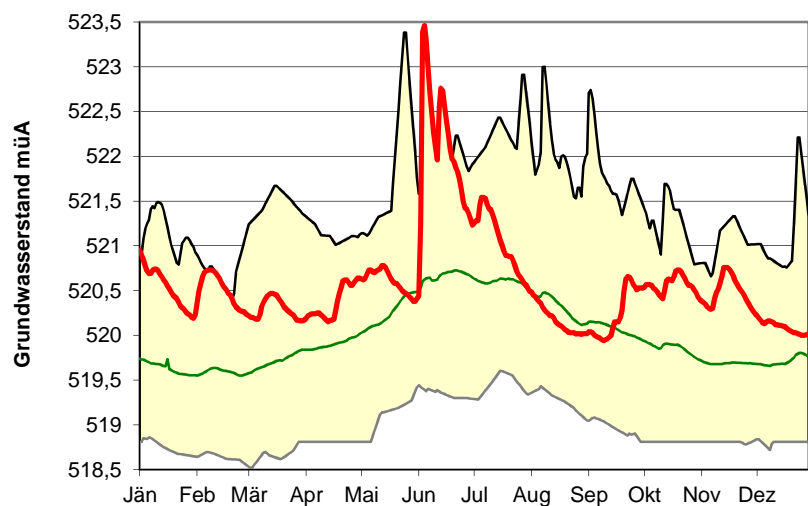
Koblach 50.4.03A (GOK = 418,49 müA)



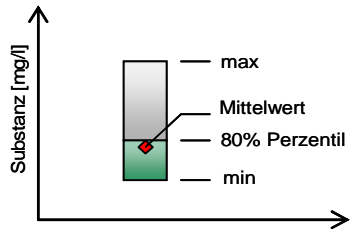
Feldkirch Nofels 01.32.24 A (GOK = 433,00 müA)



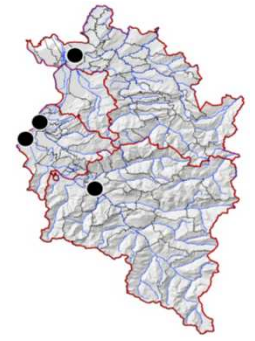
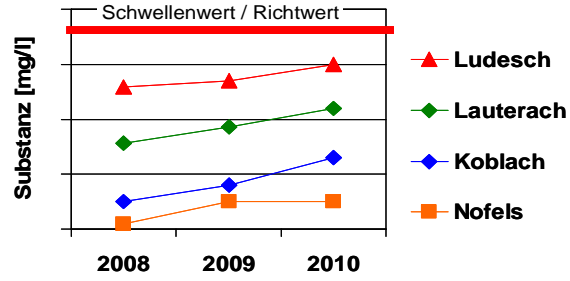
Ludesch 06.36.08 (GOK = 542,57 müA)



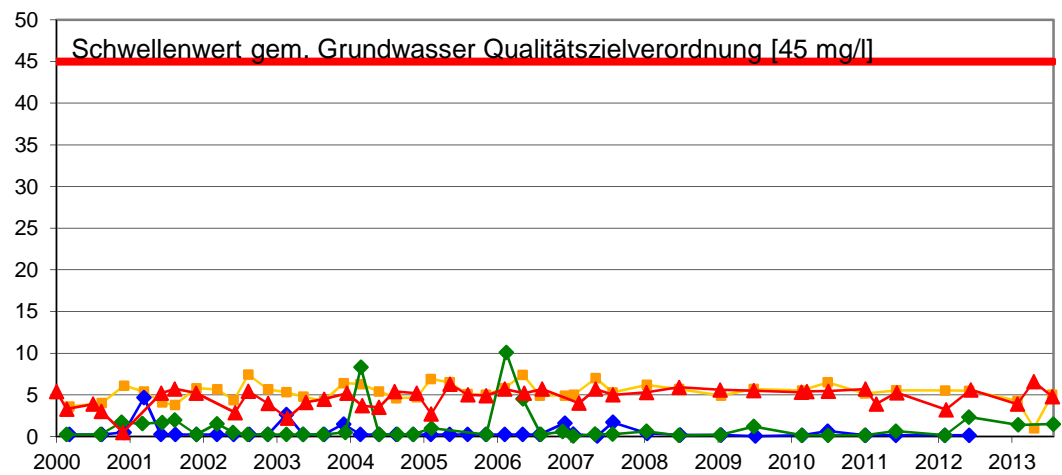
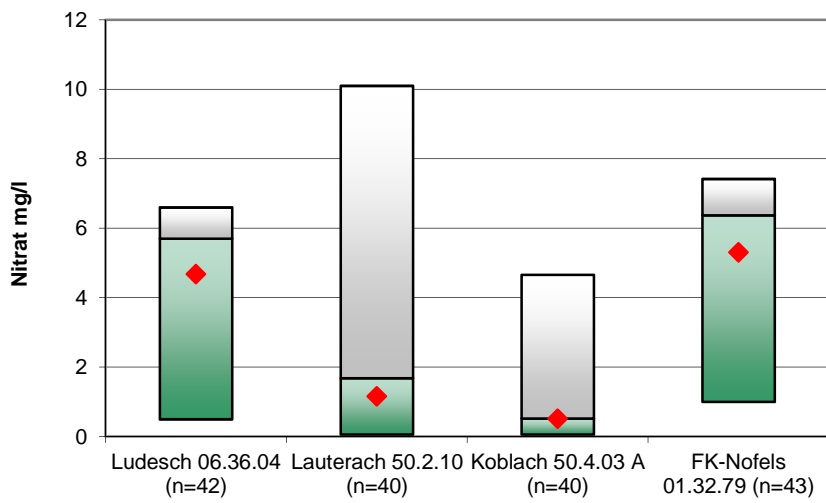
Qualitätsuntersuchungen im Rahmen der GZÜV ab 2000



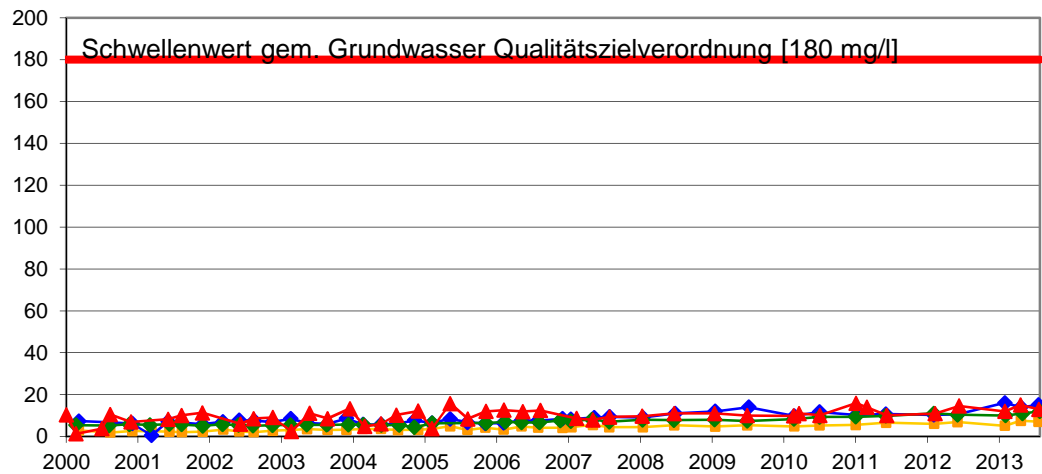
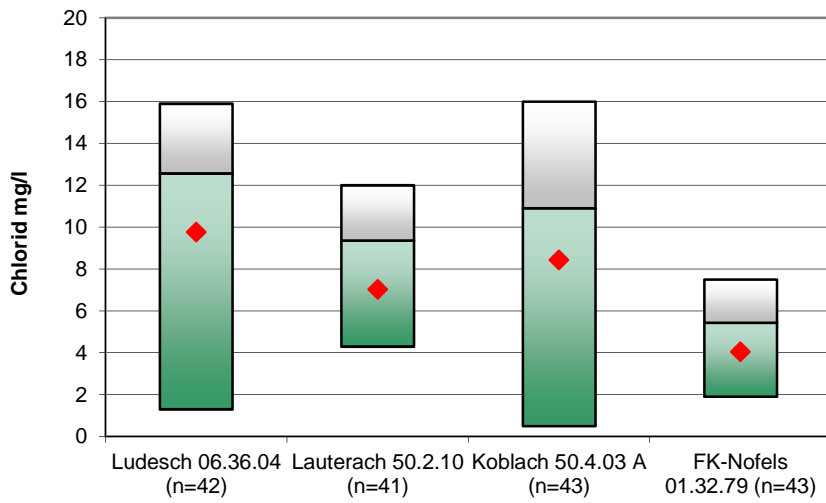
Verlauf der gemessenen Werte ab 2000



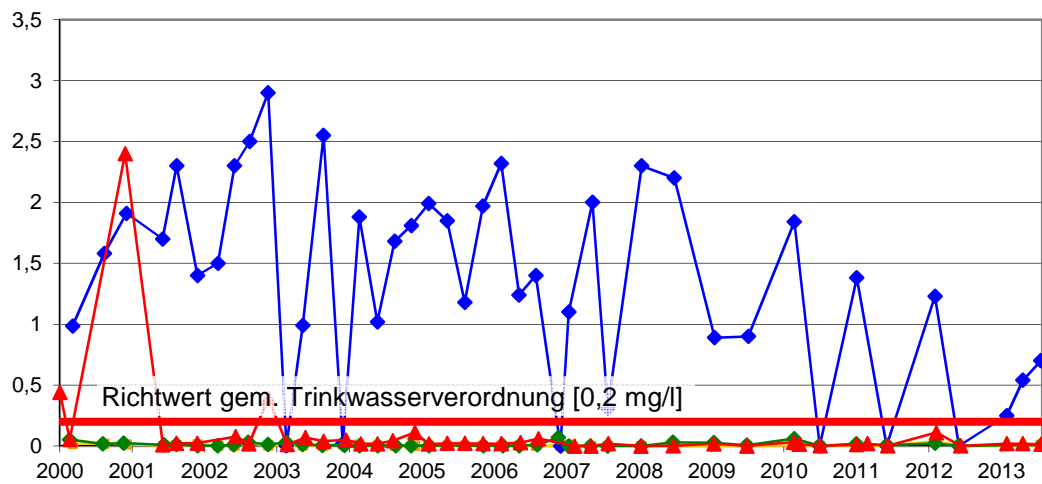
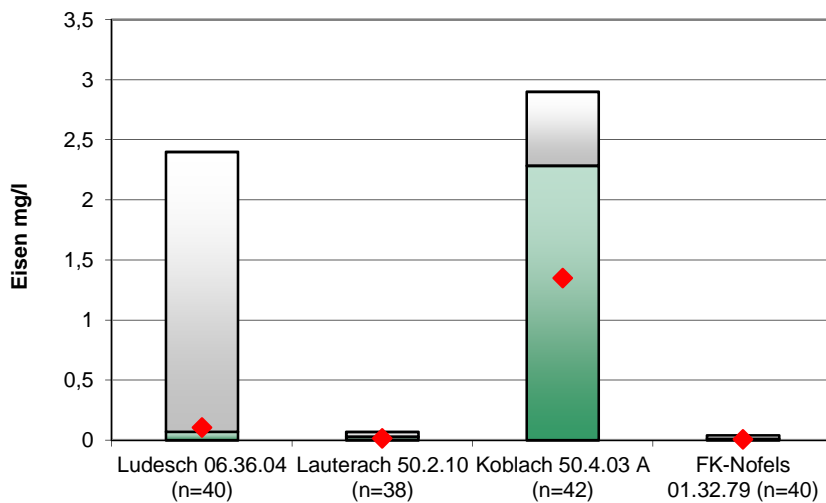
Nitrat



Chlorid



Eisen



Mangan

