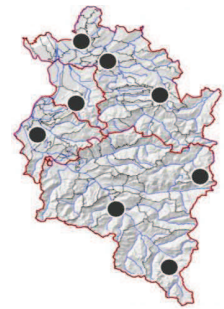
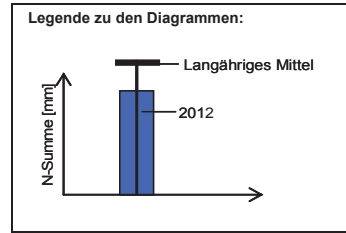
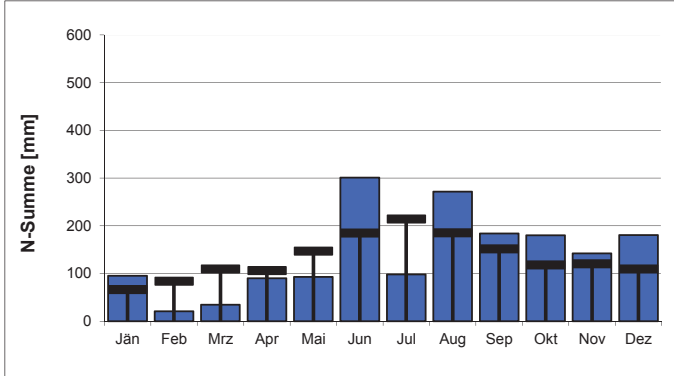


- Anlage 1: Niederschlag
- Anlage 2: Oberflächengewässer, Abfluss
- Anlage 3: Bodenseewasserstand und –temperatur
- Anlage 4: Grundwasser – Quantität
- Anlage 5: Grundwasser – Qualität

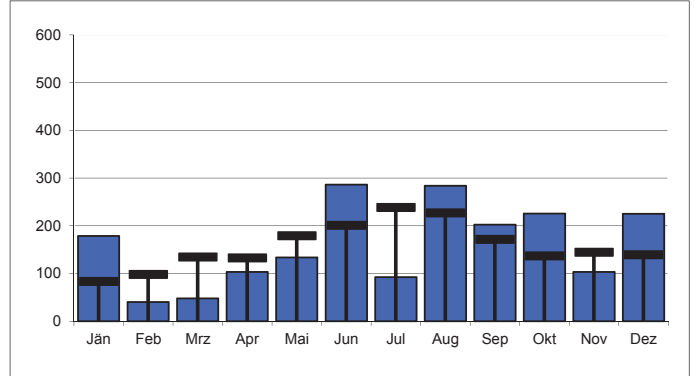
Station	Summe 2012 [mm]	Langjähriges Mittel (LM)	Abweichung gegenüber LM	N-Tage 2012
Bregenz Altretweg	1.691	1.594	+6%	173
Alberschwende	1.922	1.883	+2%	191
Schönenbach	2.347	2.262	+4%	204
Ebnit	2.467	2.149	+15%	191
Feldkirch	1.414	1.230	+15%	184
Zürs	1.548	1.591	-3%	187
Rodund	1.430	1.267	+13%	187
Vermunt	2.065	1.759	+17%	223
Mittelwerte 2012	1.860	1.717	+8%	193



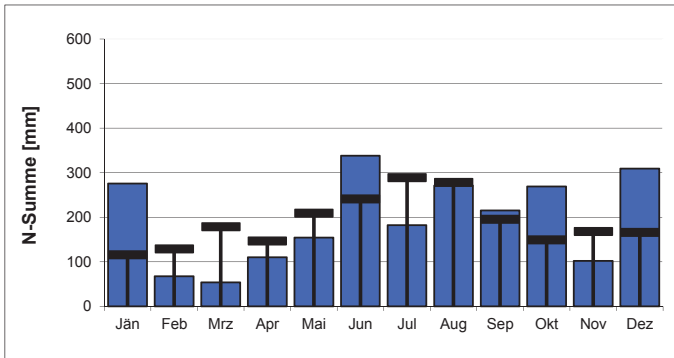
Bregenz Altretweg 100776



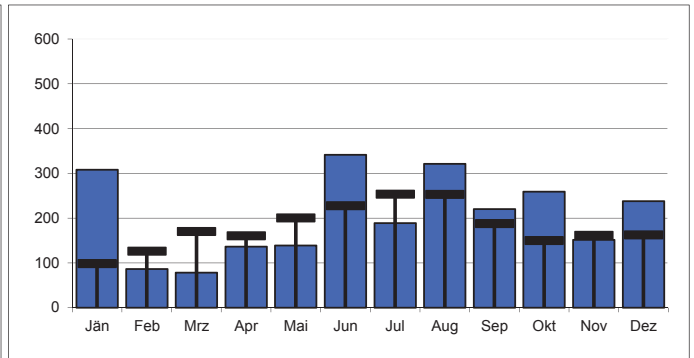
Alberschwende 100842



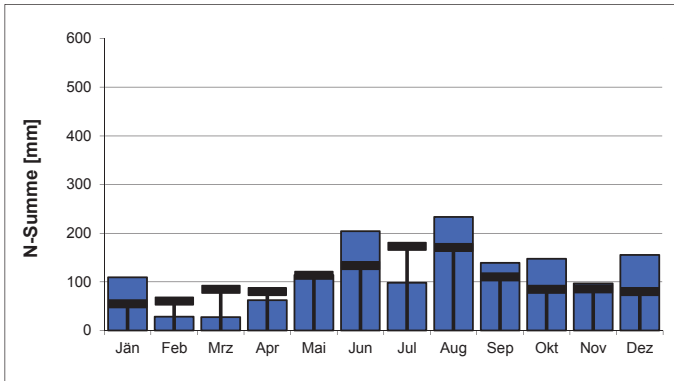
Schönenbach 100651



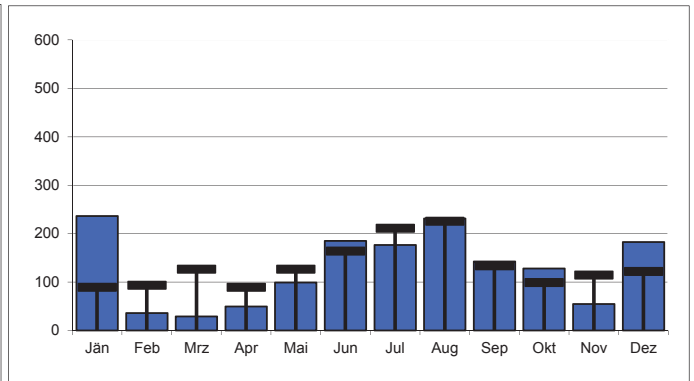
Ebnit 100453



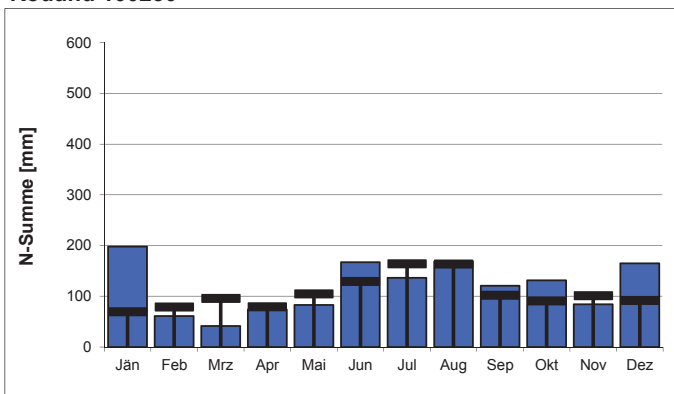
Feldkirch 100396



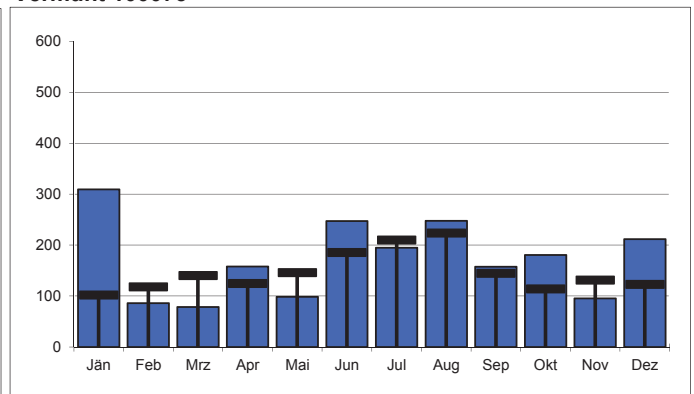
Zürs 101113



Rodund 100230

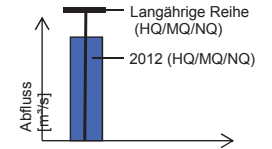


Vermunt 100073



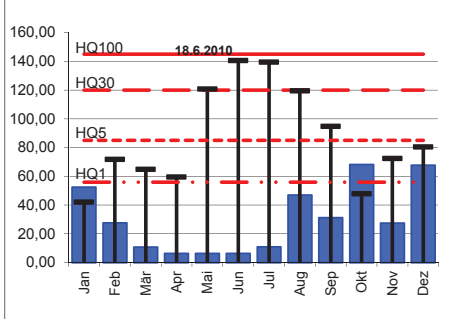
Station	Langjährige Reihen [m³/s]							Werte 2012 [m³/s]			Abweichung [%]		
	Reihe	NQ	MQ	HQ1	HQ5	HQ30	HQ100	NQ	MQ	HQ	NQ	MQ	HQ100
Leiblach, Unterhochsteg	1976-2012	0,030	3,15	56	85	120	145	0,164	3,51	68	+447%	+11%	-53%
Bregenzerrach, Kennelbach	1951-2012	1,07	46,5	480	750	1.100	1.450	3,16	52,8	596	+195%	+14%	-59%
Dornbirnerach, Lauterach	1982-2012	0,238	6,99	120	180	270	325	1,320	8,45	146	+455%	+21%	-55%
Rhein, Lustenau	1976-2012	32	232	1180	1.800	2.600	3.200	77,1	277	1.488	+143%	+19%	-54%
III, Gisingen	1951-2012	3,58	65,3	240	405	590	820	5,07	77,2	339	+42%	+18%	-59%

Legende zu den Diagrammen

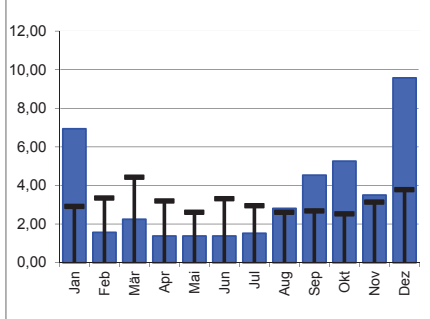


Leiblach, Unterhochsteg

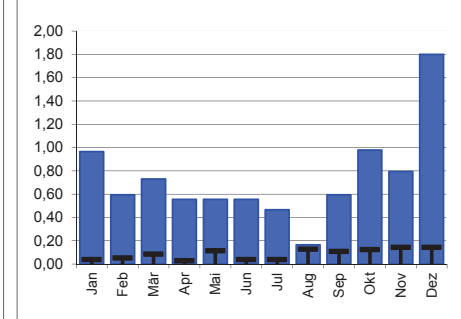
HQ



MQ

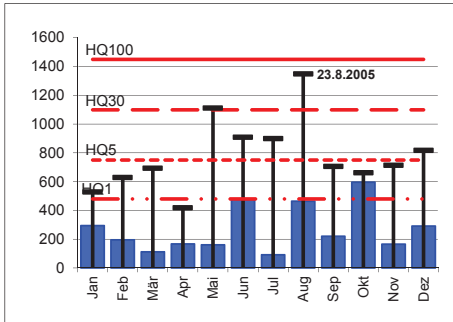


NQ

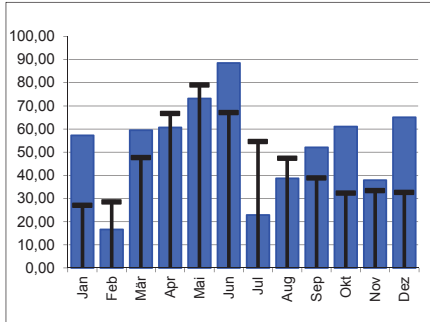


Bregenzerrach, Kennelbach

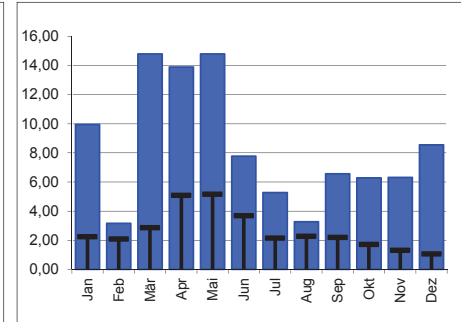
HQ



MQ

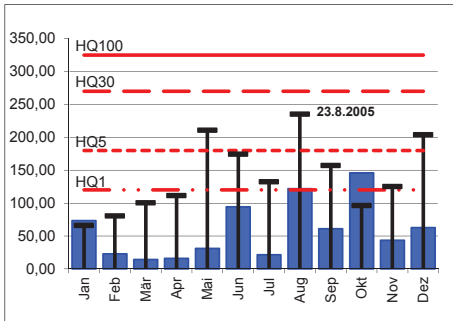


NQ

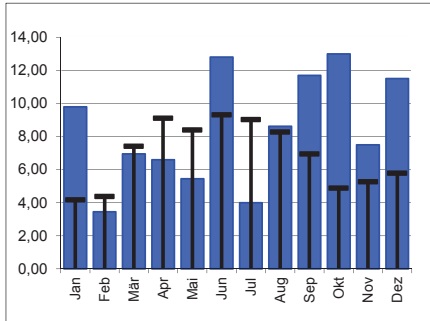


Dornbirnerach, Lauterach

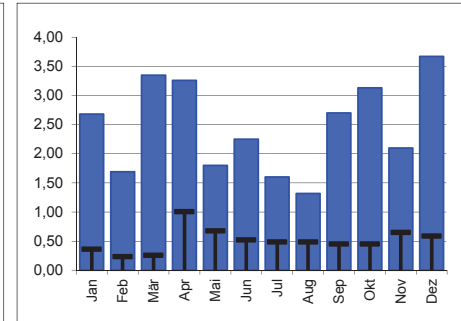
HQ



MQ

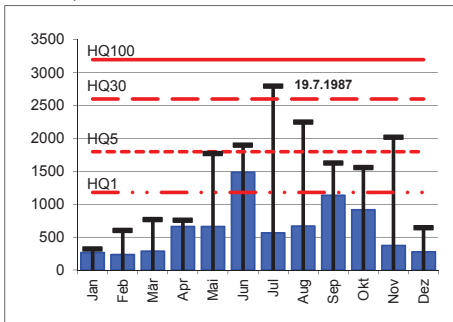


NQ

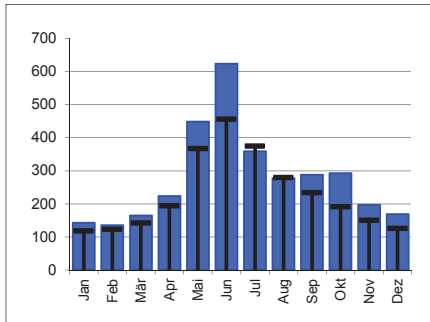


Rhein, Lustenau

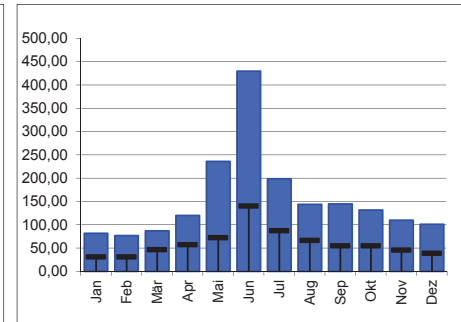
HQ



MQ

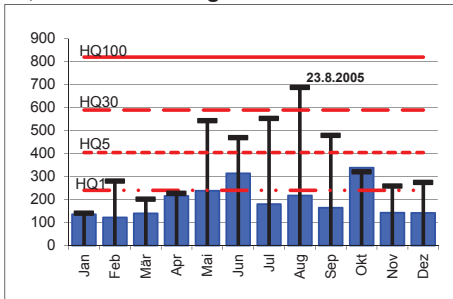


NQ

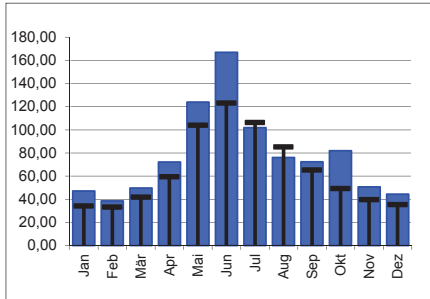


III, Feldkirch-Gisingen

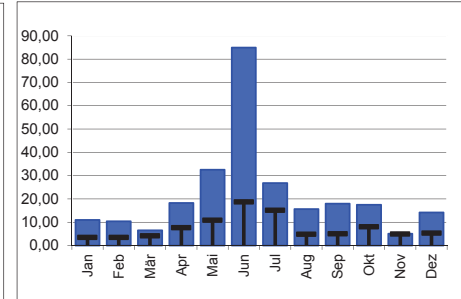
HQ



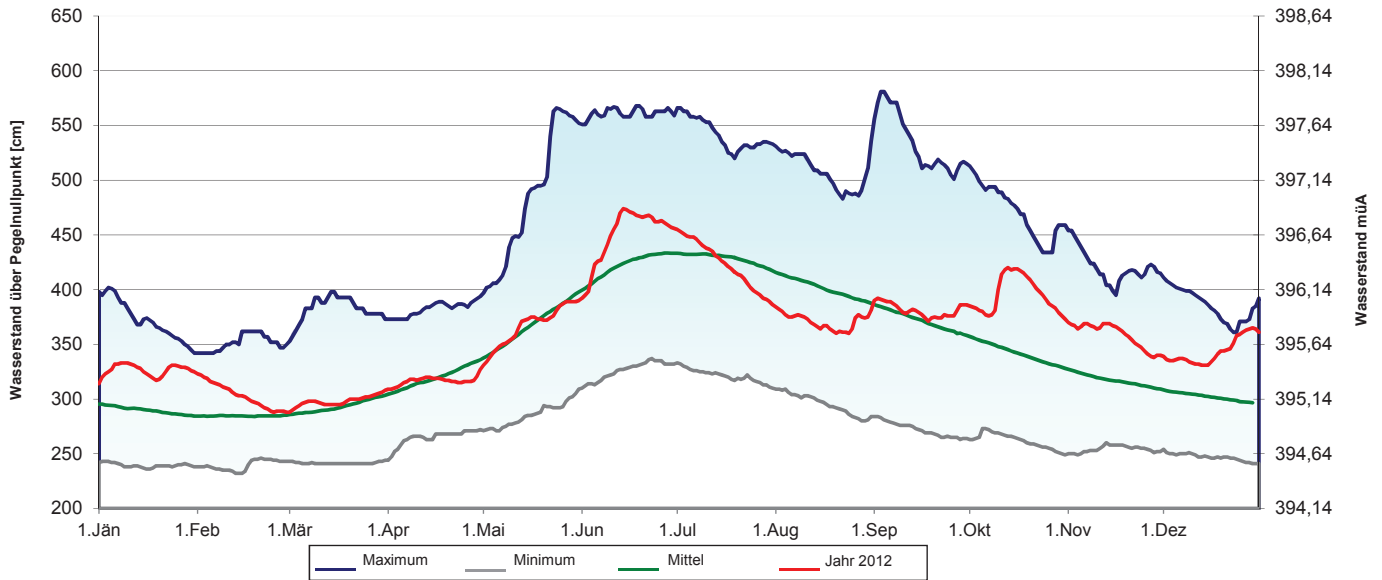
MQ



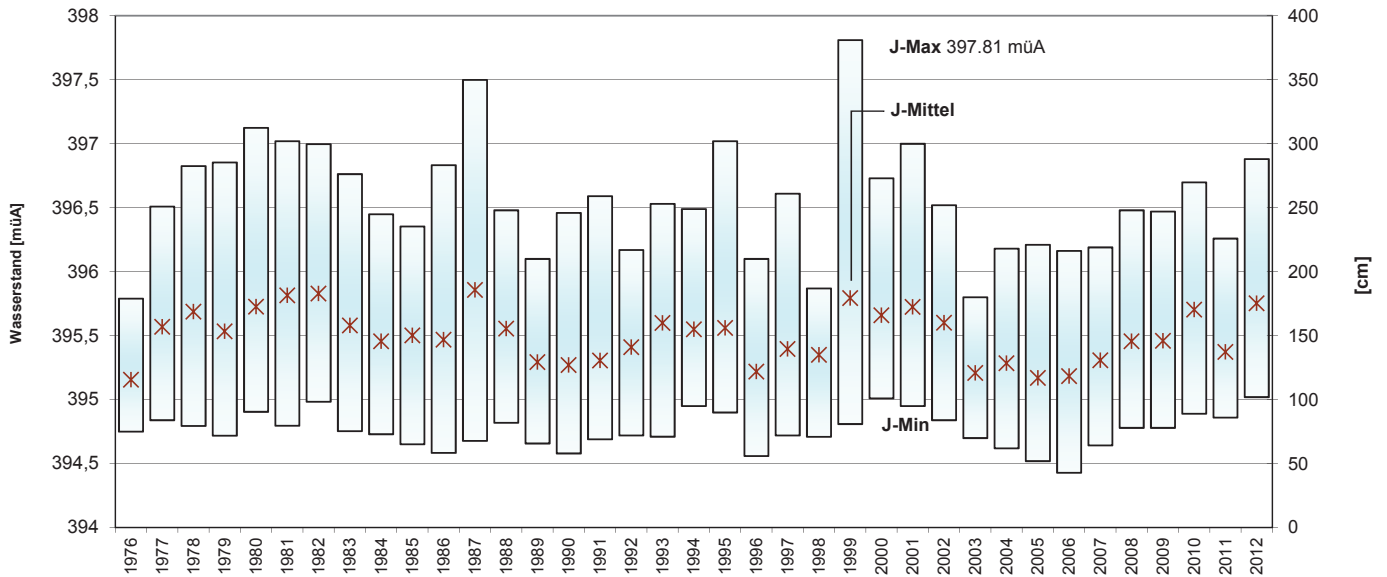
NQ



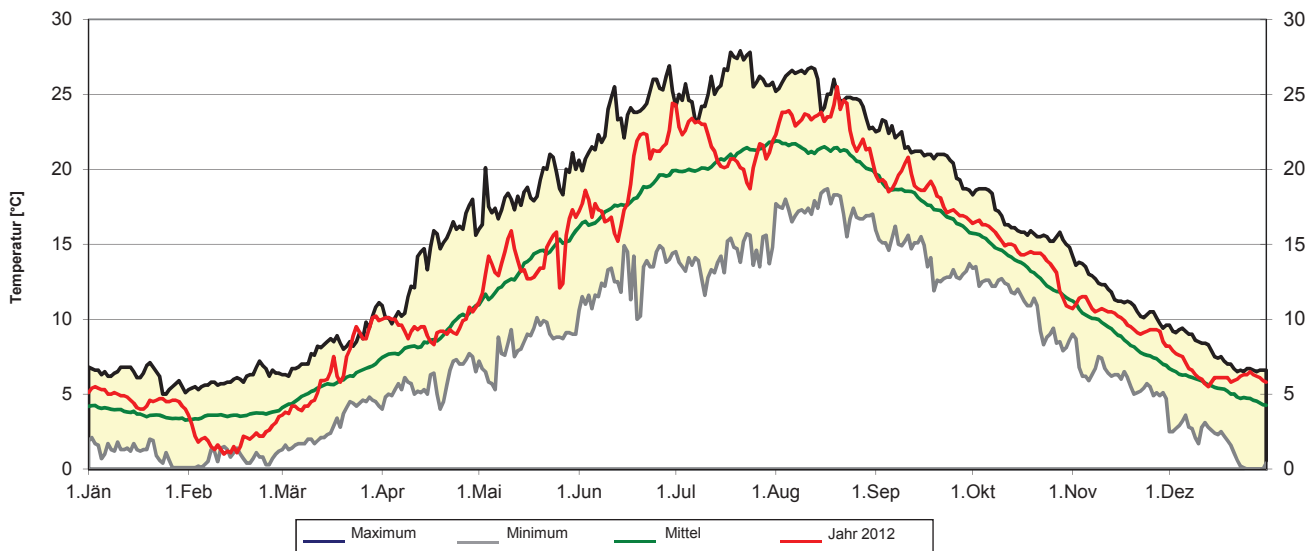
Wasserstandsbewegung von 1864 - 2011 (147 Jahre) - Pegelnullpunkt: 392,14 m. ü. Adria

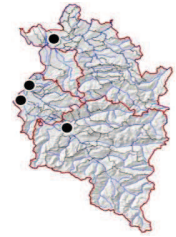


Wasserstandsbewegung von 1976 bis 2012 (Jahresminimum -maximum und -mittelwert)



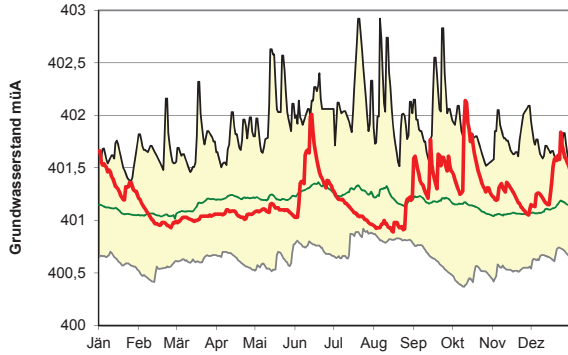
Wassertemperatur im Tagesmittel (Messpunkt 50 cm unter Wasser)
Extremwerte und Mittel von 1976 - 2007 (31 Jahre)



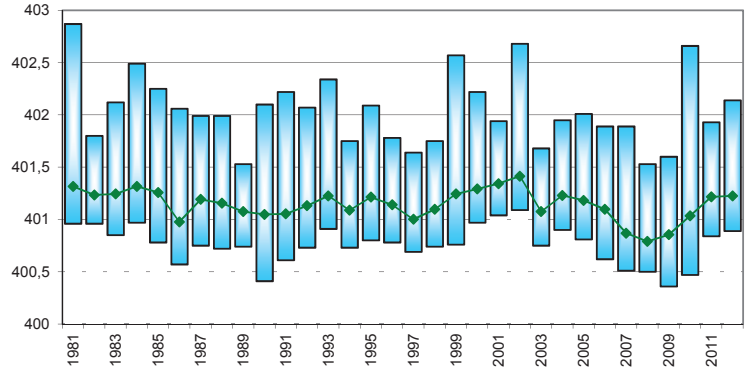
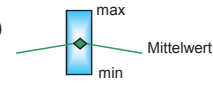


Verlauf Grundwasserstand 2012 mit Min-, Max und Mittelwerten über die gesamte Beobachtungsdauer

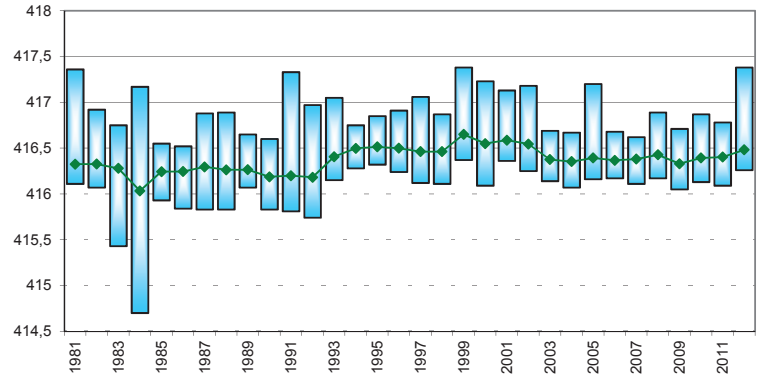
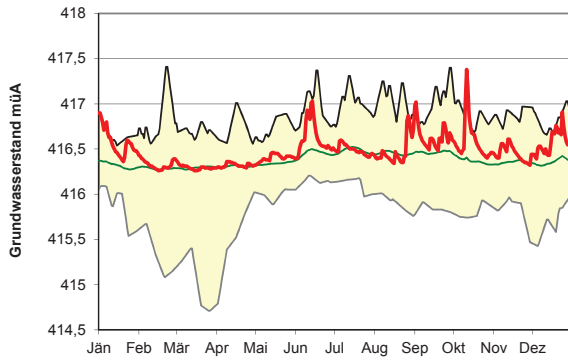
Lauterach 50.2.10 (GOK = 403,42 müA)



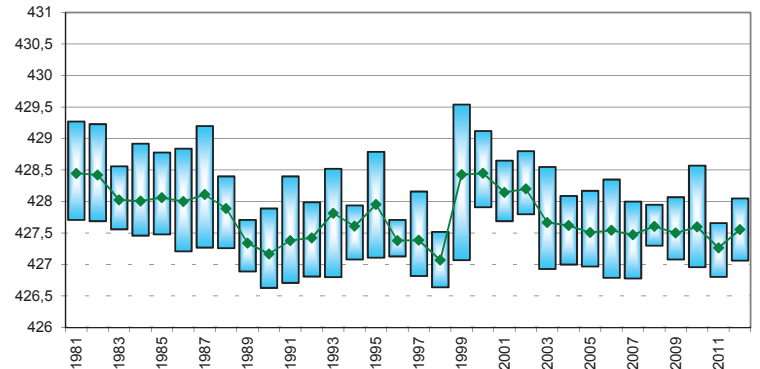
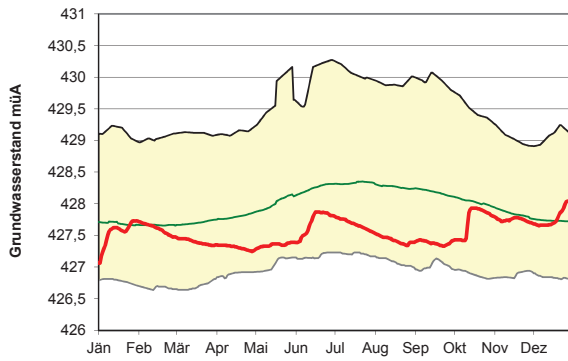
Langjährige Reihe (n=30)



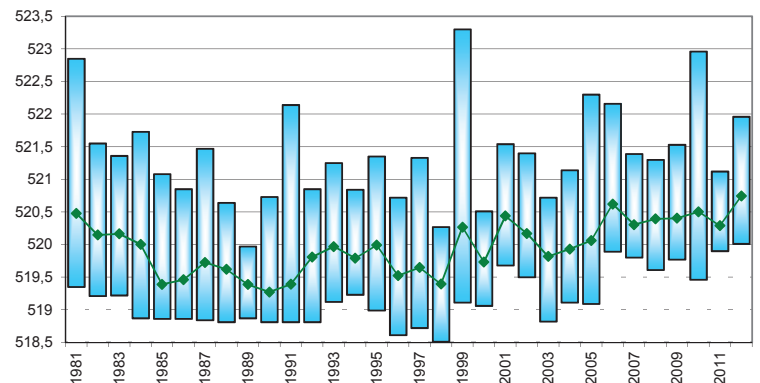
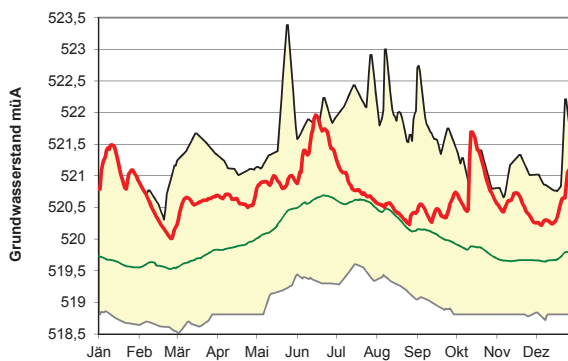
Koblach 50.4.03A (GOK = 418,49 müA)



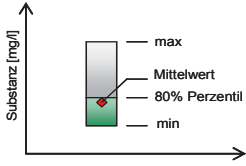
Feldkirch Nofels 01.32.24 (GOK = 433,00 müA)



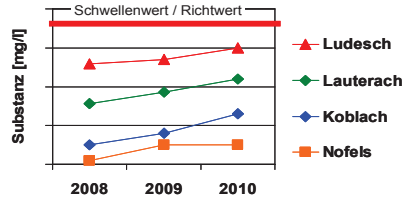
Ludesch 06.36.08 (GOK = 542,57 müA)



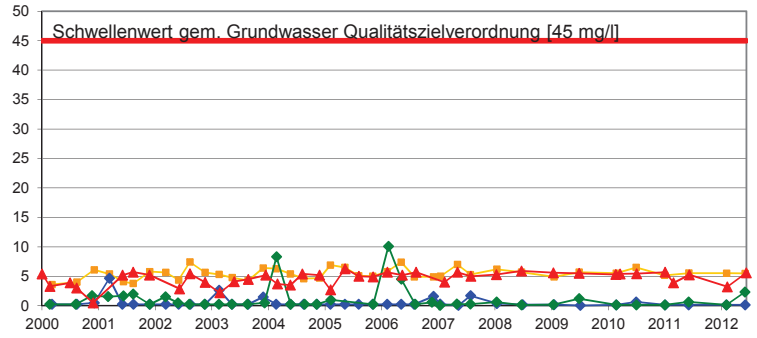
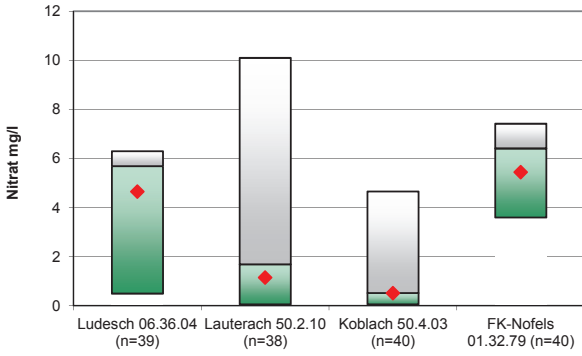
Qualitätsuntersuchungen im Rahmen der GZÜV ab 2000



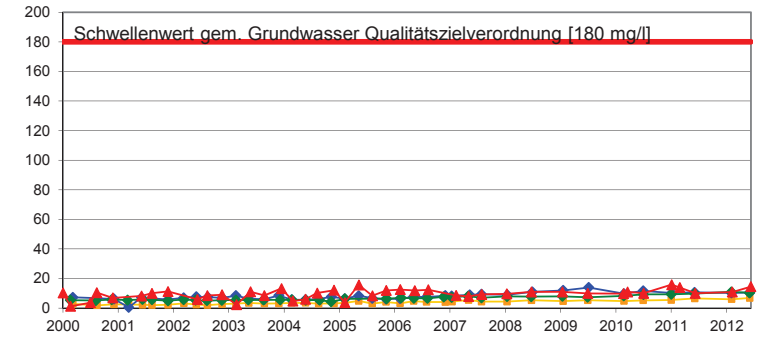
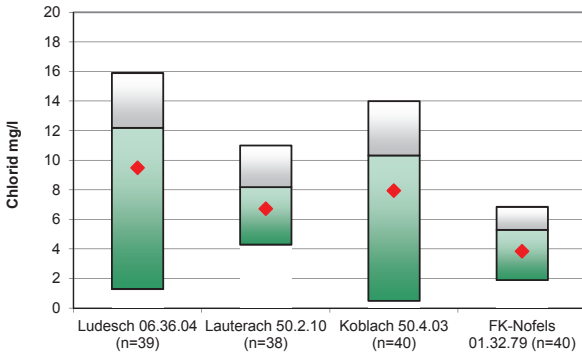
Verlauf der gemessenen Werte ab 2000



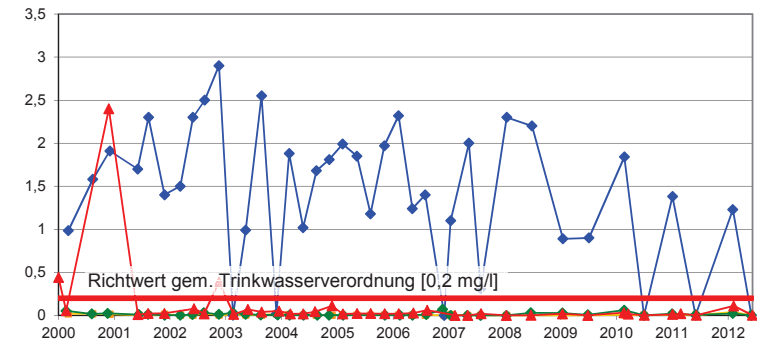
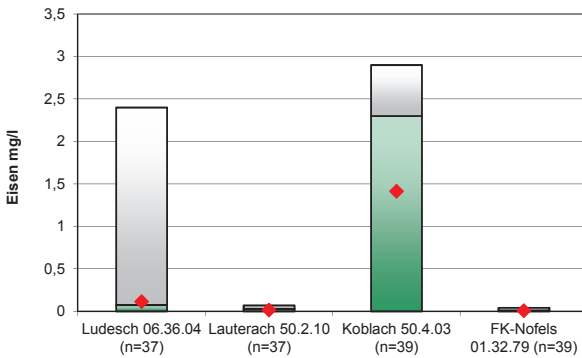
Nitrat



Chlorid



Eisen



Mangan

