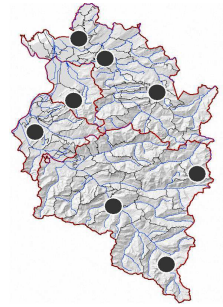
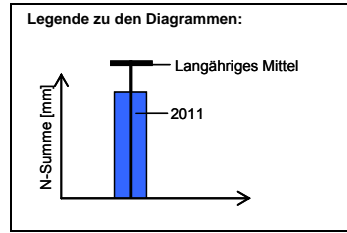
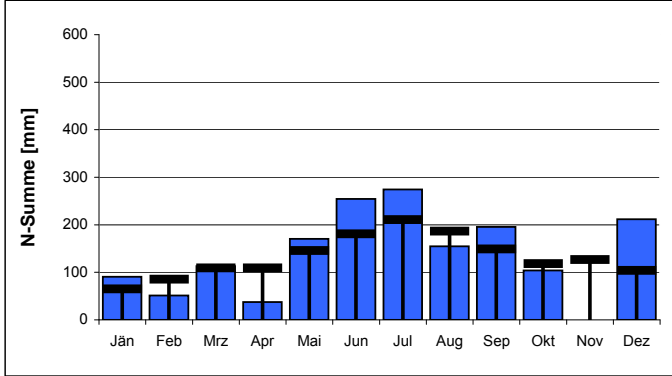


- Anlage 1: Bodenseewasserstand und –temperatur
- Anlage 2: Oberflächengewässer, Abfluss
- Anlage 3: Niederschlag
- Anlage 4: Grundwasser – Quantität
- Anlage 5: Grundwasser – Qualität

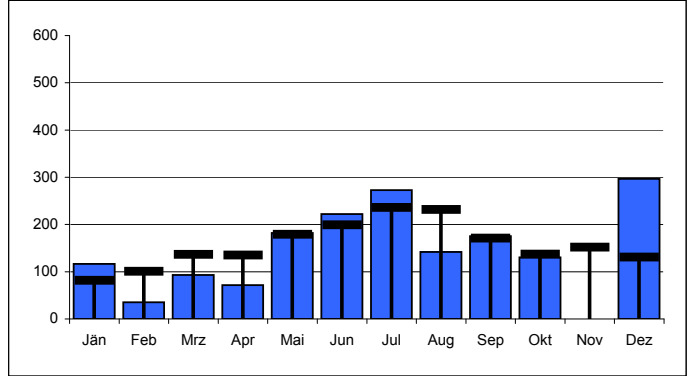
Station	Summe 2011 [mm]	Langjähriges Mittel (LM)	Abweichung gegenüber LM	N-Tage 2011
Bregenz Altretweg	1.657	1.590	+4%	150
Alberschwende	1.711	1.891	-10%	157
Schönenbach	2.092	2.272	-8%	156
Ebnit	1.770	2.169	-18%	158
Feldkirch	1.144	1.235	-7%	144
Zürs	1.210	1.614	-25%	161
Rodund	1.226	1.269	-3%	148
Vermunt	1.644	1.765	-7%	159
Mittelwerte 2011	1.557	1.726	-10%	154



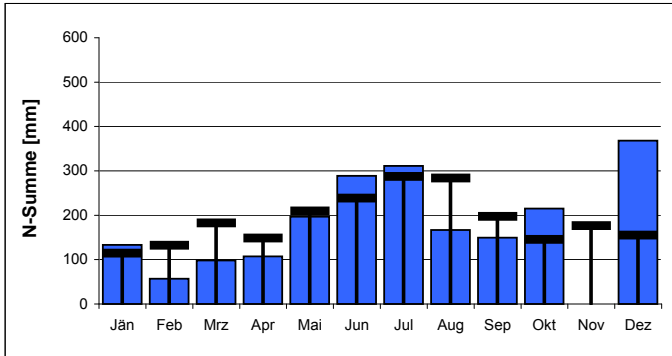
**Bregenz Altretweg 100776**



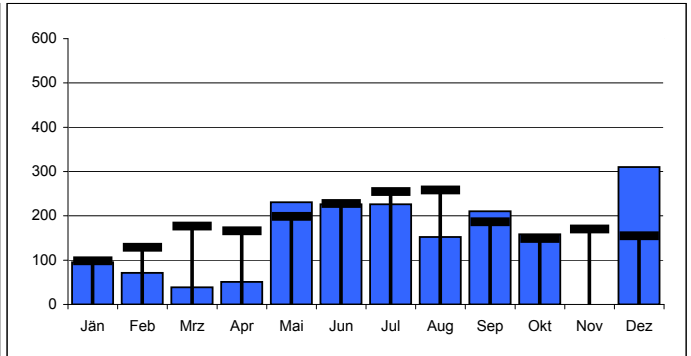
**Alberschwende 100842**



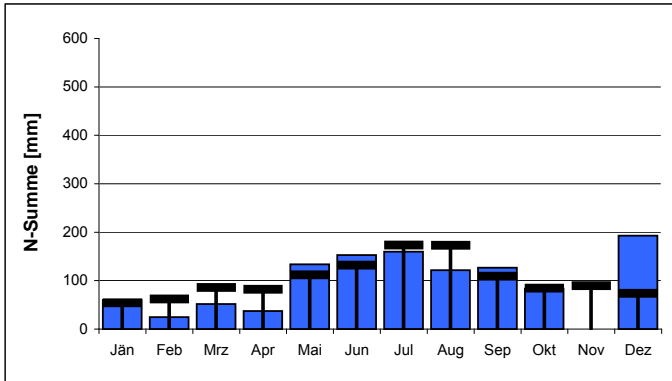
**Schönenbach 100651**



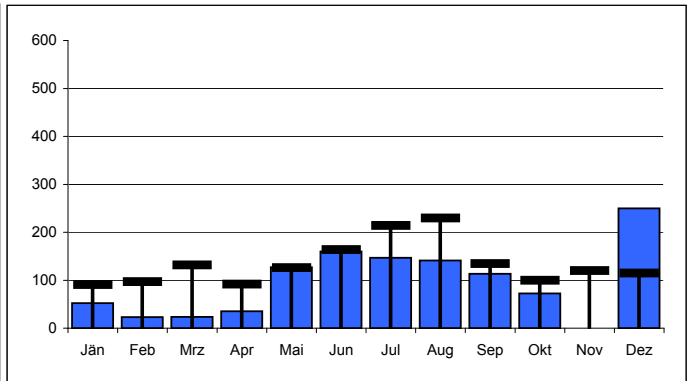
**Ebnit 100453**



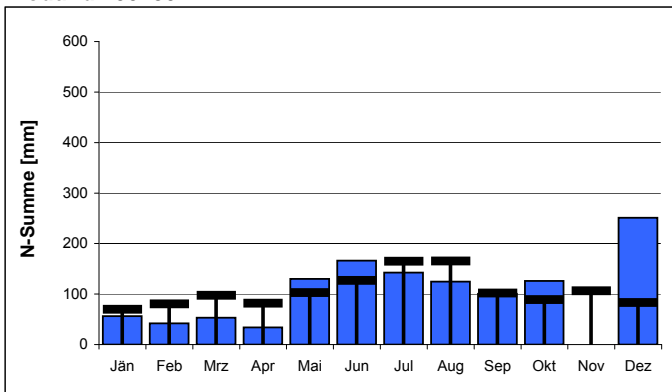
**Feldkirch 100396**



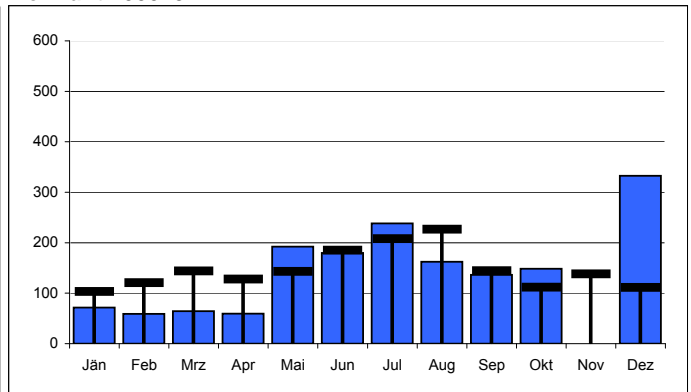
**Zürs 101113**



**Rodund 100230**

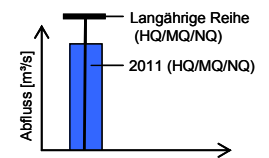


**Vermunt 100073**



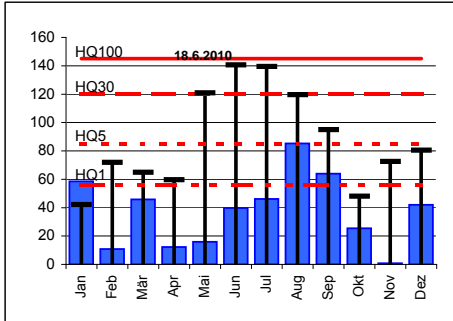
Station	Langjährige Reihen [m³/s]							Werte 2011 [m³/s]			Abweichung [%]		
	Reihe	NQ	MQ	HQ1	HQ5	HQ30	HQ100	NQ	MQ	HQ	NQ	MQ	HQ100
Leiblach, Unterhochsteg	1976-2011	0,030	3,13	56	85	120	145	0,149	3,18	85	+397%	+1%	-41%
Breggenzerach, Kennelbach	1951-2011	1,07	46,4	480	750	1.100	1.450	3,00	39,9	653	+180%	-14%	-55%
Dornbirnerach, Lauterach	1982-2011	0,238	6,93	120	180	270	325	0,701	6,33	109	+195%	-9%	-66%
Rhein, Lustenau	1976-2011	32	231	1180	1.800	2.600	3.200	60,6	194	1.102	+91%	-16%	-66%
III, Gisingen	1951-2011	3,58	65,1	240	405	590	820	5,07	53,8	322	+42%	-17%	-61%

Legende zu den Diagrammen

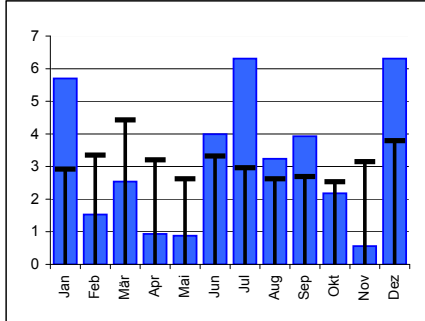


Leiblach, Unterhochsteg

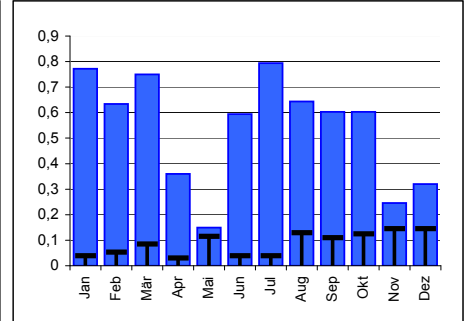
HQ



MQ

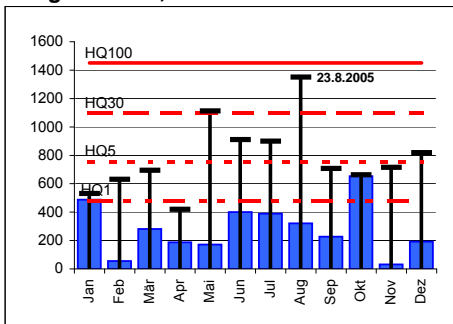


NQ

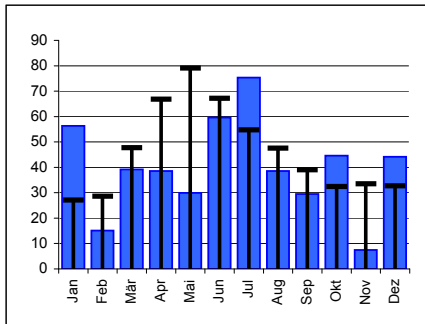


Breggenzerach, Kennelbach

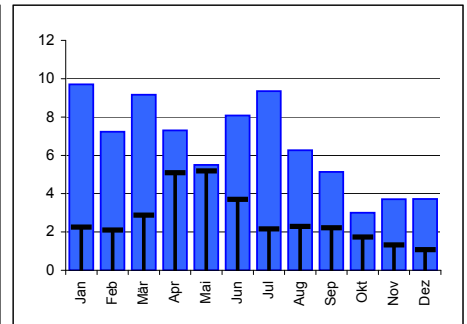
HQ



MQ

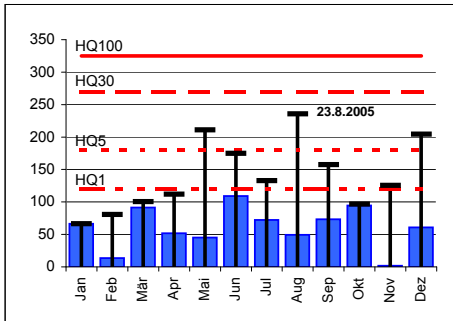


NQ

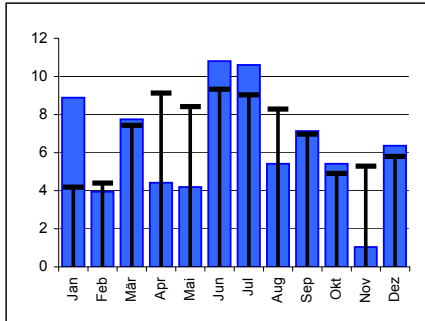


Dornbirnerach, Lauterach

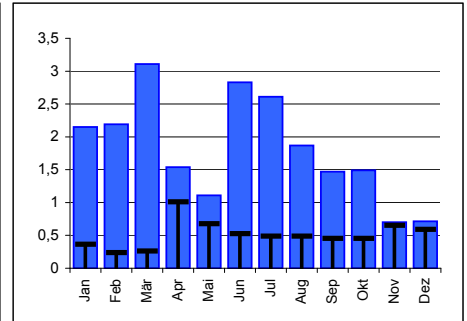
HQ



MQ

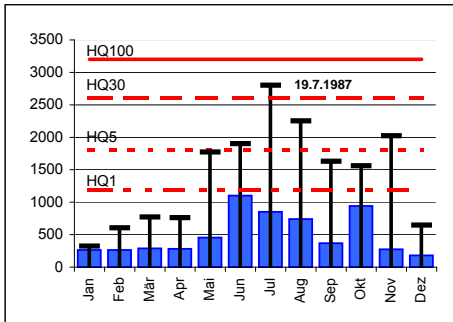


NQ

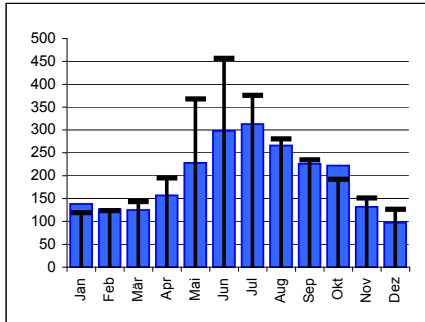


Rhein, Lustenau

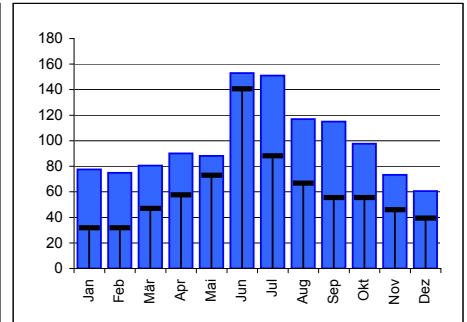
HQ



MQ

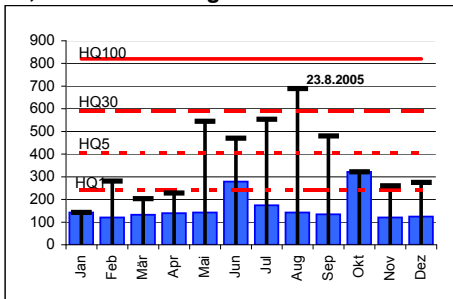


NQ

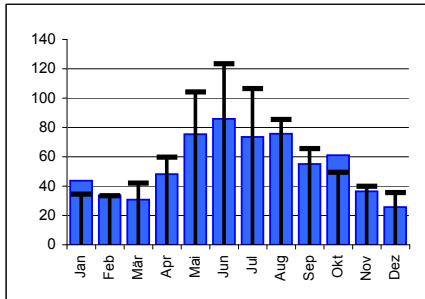


III, Feldkirch-Gisingen

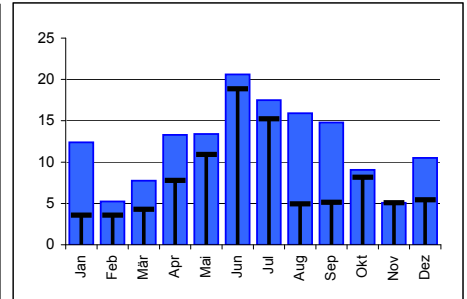
HQ



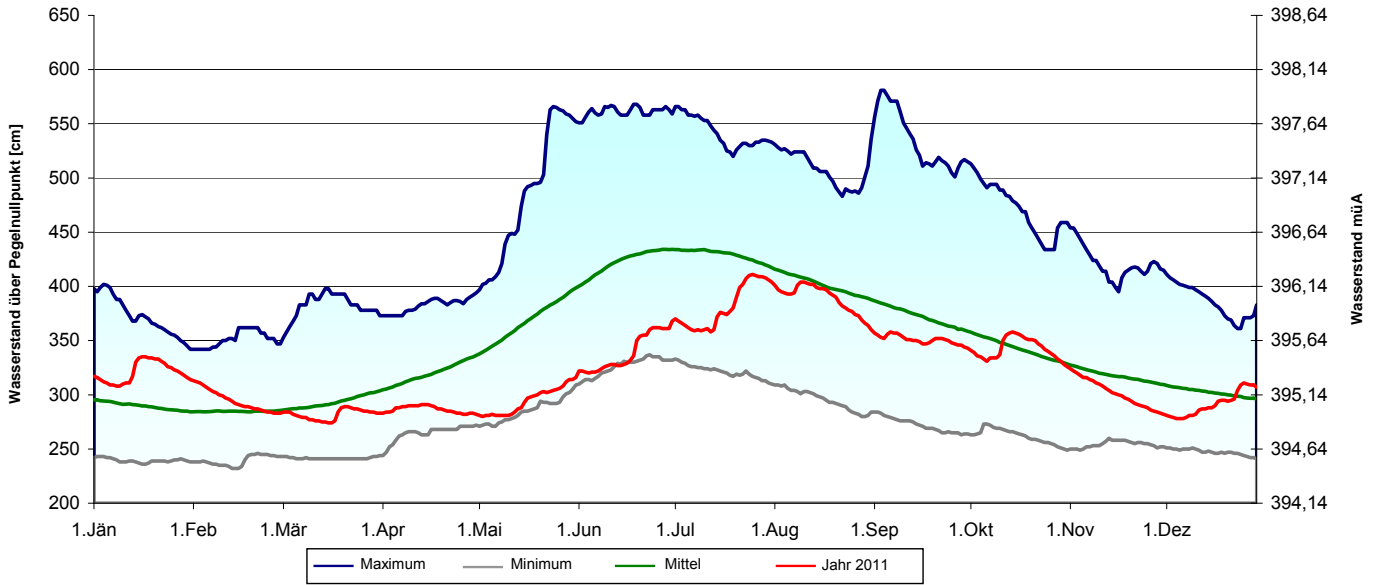
MQ



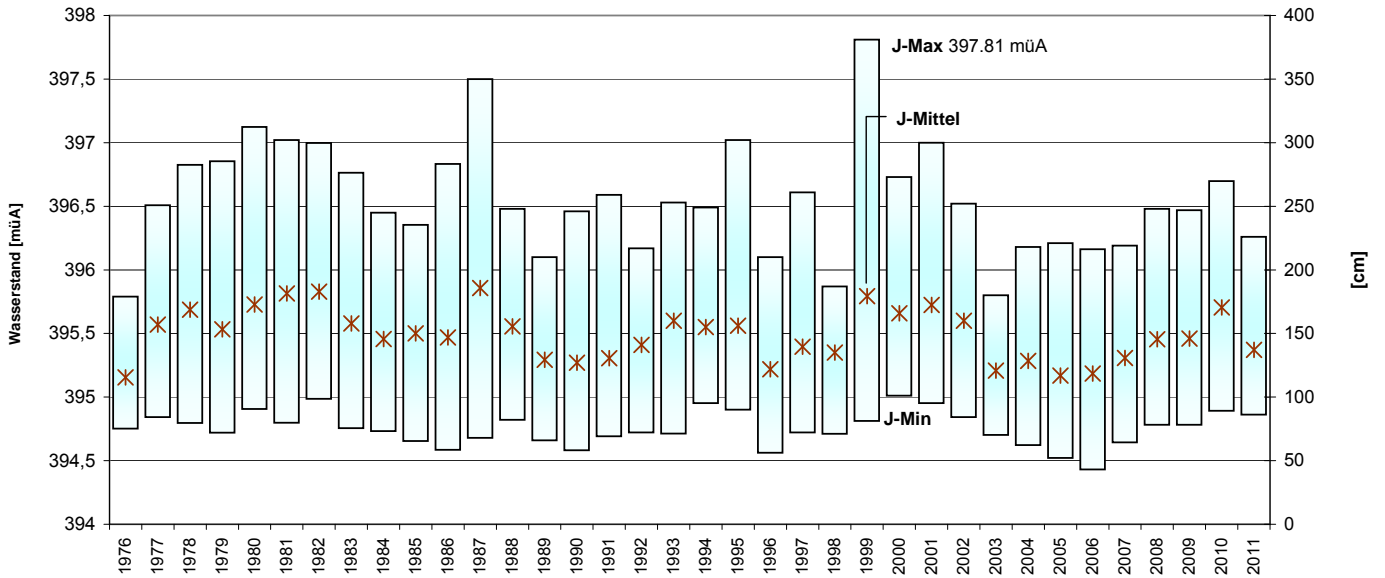
NQ



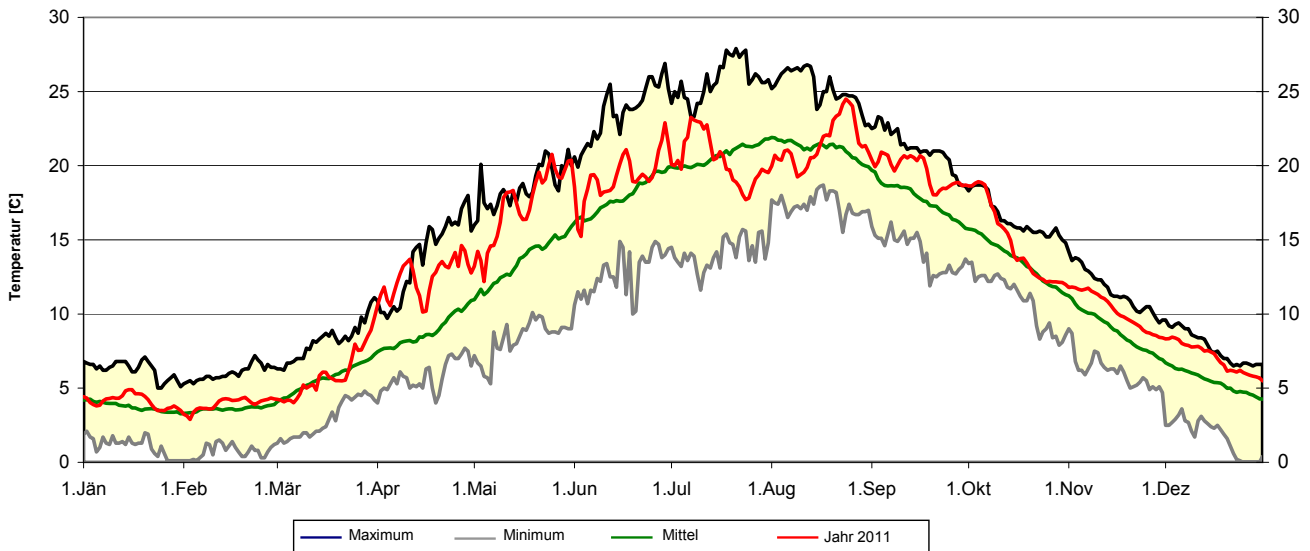
Wasserstandsbewegung von 1864 - 2007 (144 Jahre) - Pegelnullpunkt: 392,14 m. ü. Adria



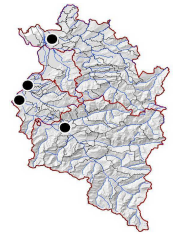
Wasserstandsbewegung von 1976 bis 2011 (Jahresminimum -maximum und -mittelwert)



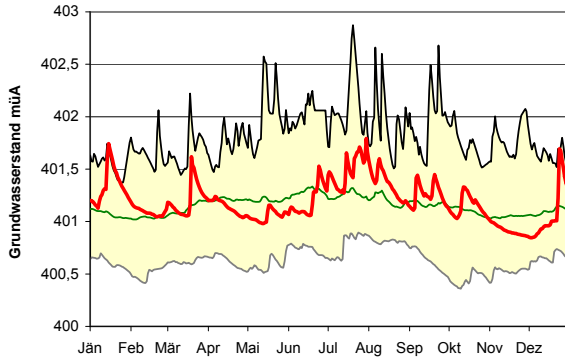
Wassertemperatur im Tagesmittel (Messpunkt 50 cm unter Wasser)  
Extremwerte und Mittel von 1976 - 2007 (31 Jahre)



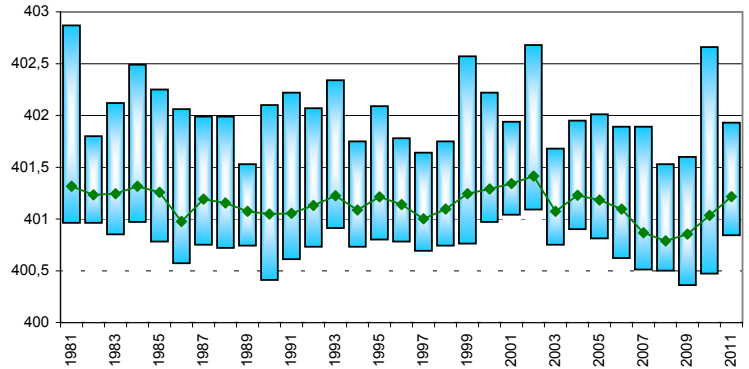
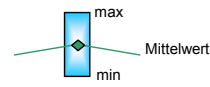
Verlauf Grundwasserstand 2011 mit Min-, Max und Mittelwerten über die gesamte Beobachtungsdauer



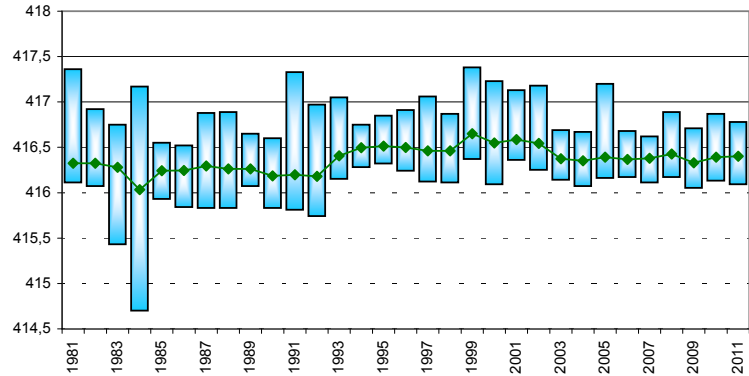
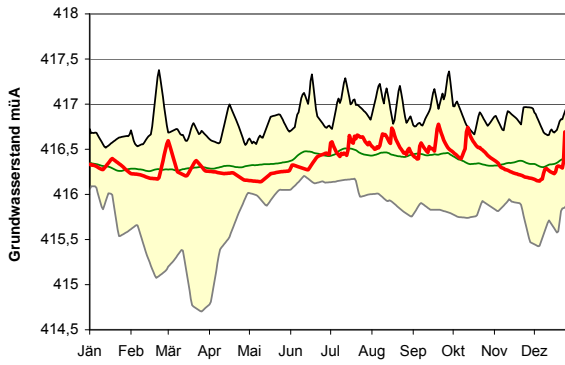
**Lauterach 50.2.10**



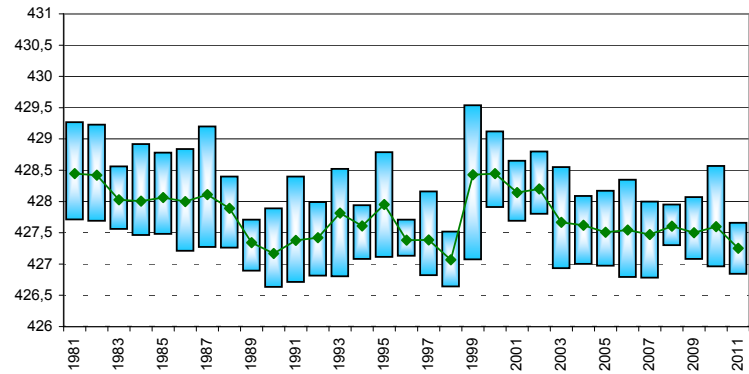
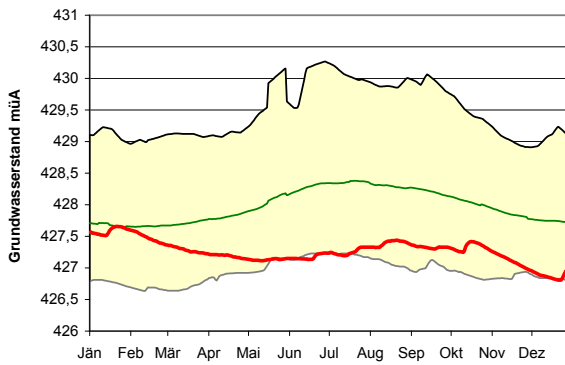
Langjährige Reihe (n=30)



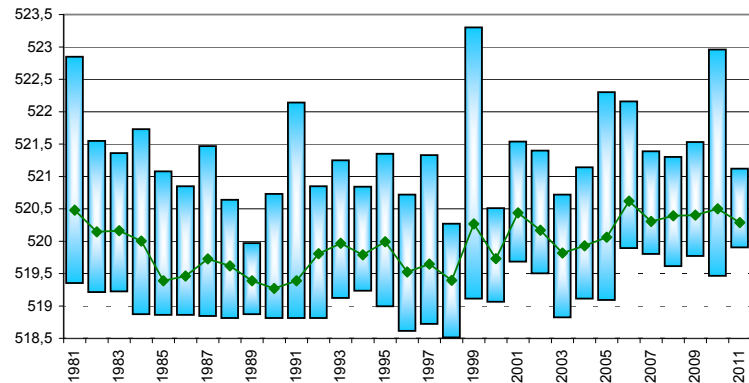
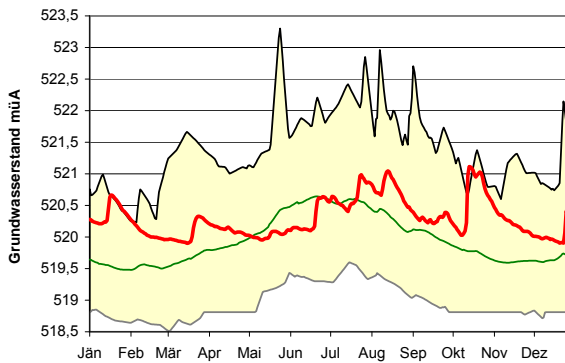
**Koblach 50.4.03A**



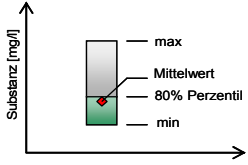
**Feldkirch Nofels 01.32.24**



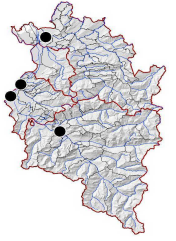
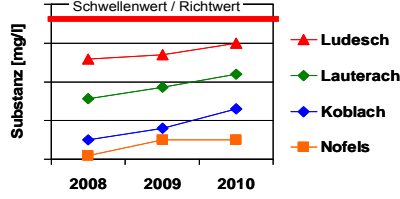
**Ludesch 06.36.08**



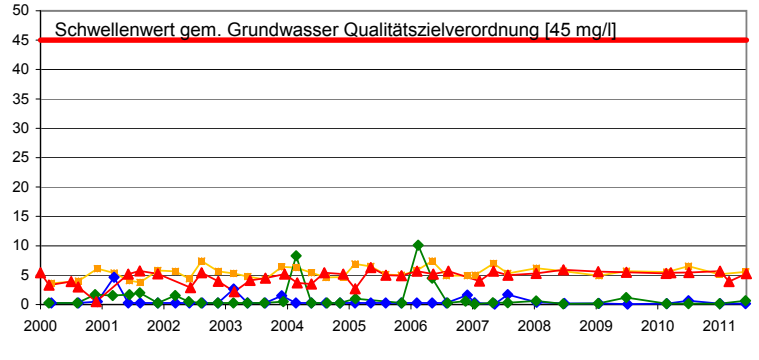
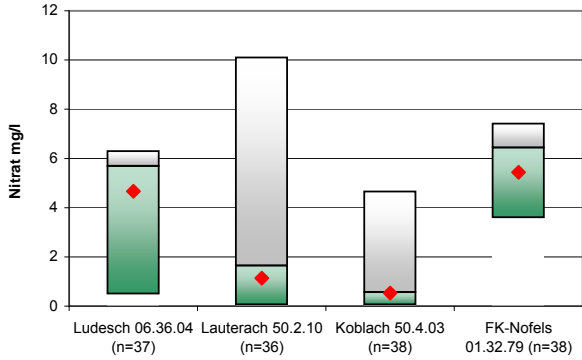
Qualitätsuntersuchungen im Rahmen der GZÜV ab 2000



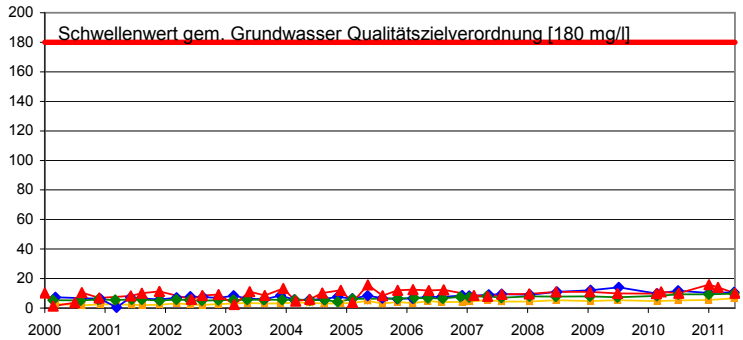
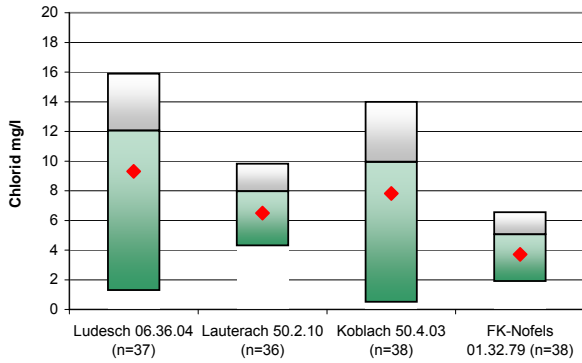
Verlauf der gemessenen Werte ab 2000



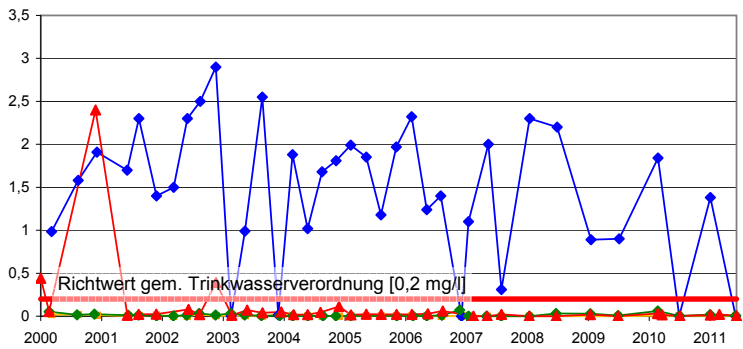
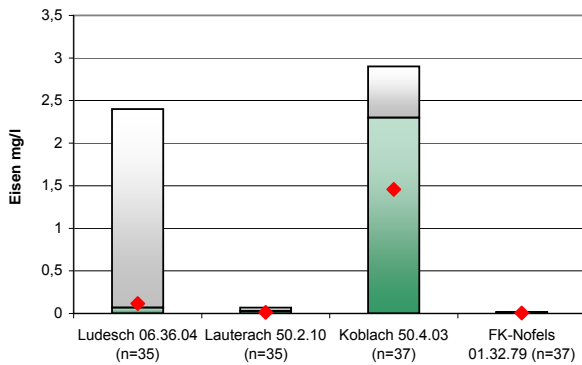
Nitrat



Chlorid



Eisen



Mangan

