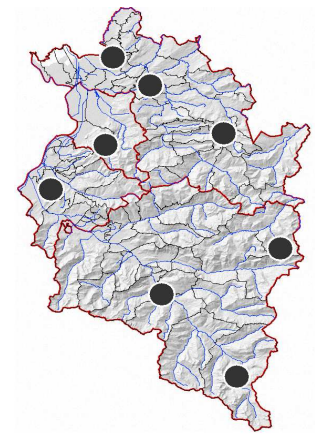
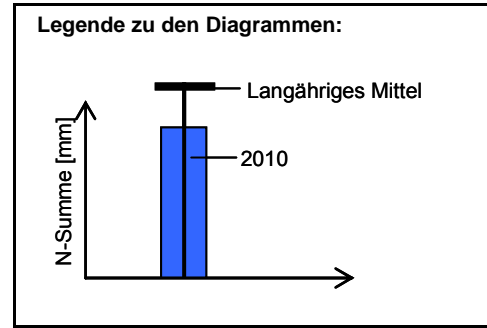
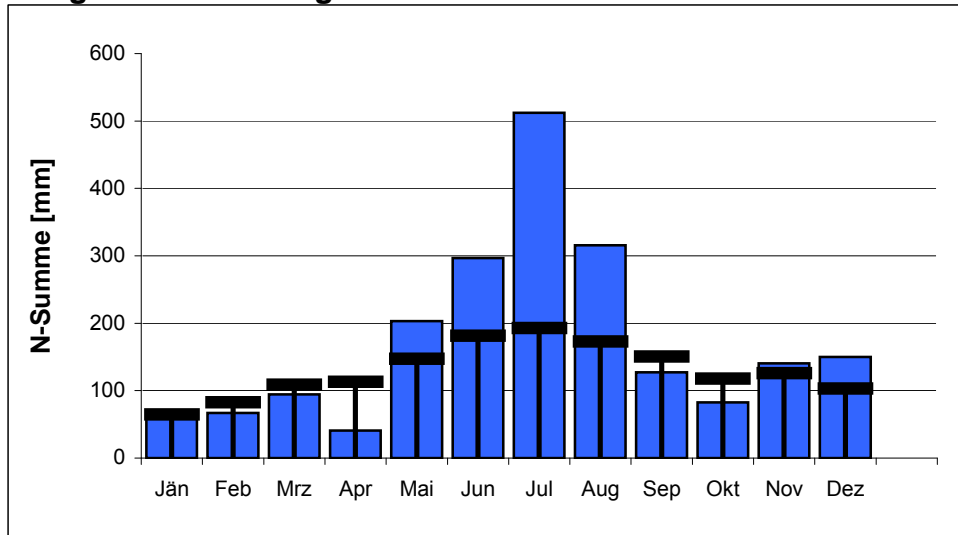


- Anlage 1: Niederschlag
- Anlage 2: Oberflächengewässer, Abfluss
- Anlage 3: Bodenseewasserstand und –temperatur
- Anlage 4: Grundwasser – Quantität
- Anlage 5: Grundwasser – Qualität

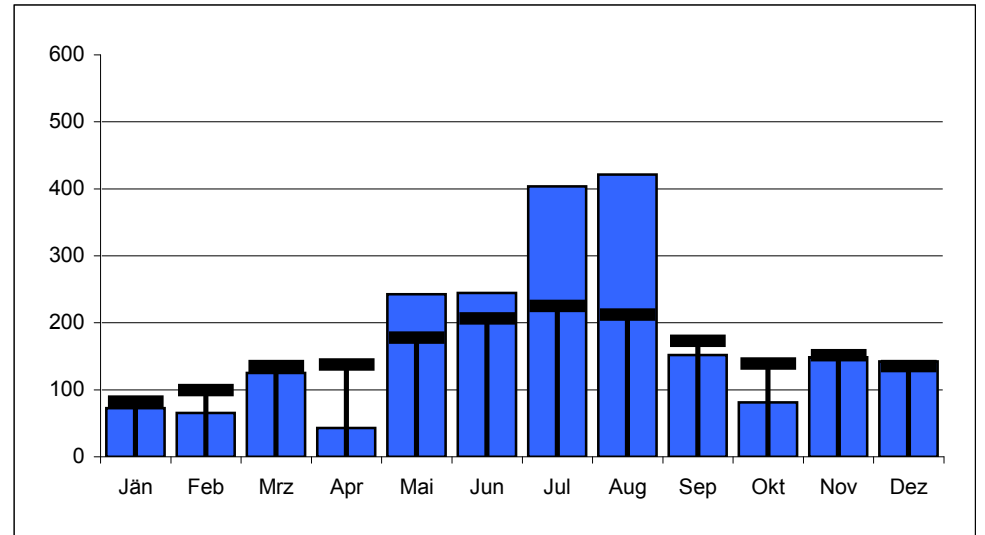
Station	Summe 2010 [mm]	Langjähriges Mittel (LM)	Abweichung gegenüber LM	N-Tage 2010
Bregenz Altretweg	2.096	1.560	+34%	178
Alberschwende	2.143	1.874	+14%	193
Schönenbach	2.253	2.263	0%	167
Ebnit	2.310	2.148	+8%	190
Feldkirch	1.347	1.230	+10%	185
Zürs	1.527	1.611	-5%	194
Rodund	1.282	1.270	+1%	197
Vermunt	1.928	1.747	+10%	215
Mittelwerte 2010	1.861	1.713	+9%	190



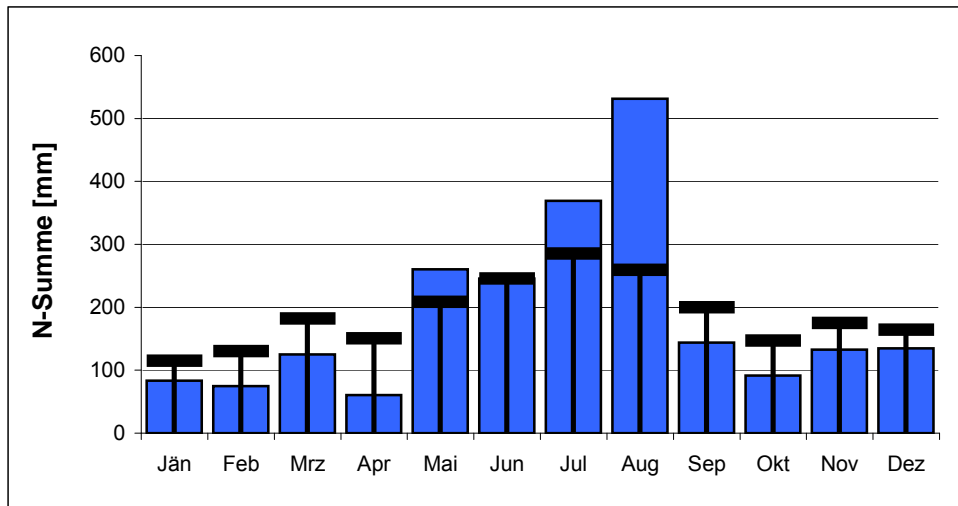
**Bregenz Altretweg 100776**



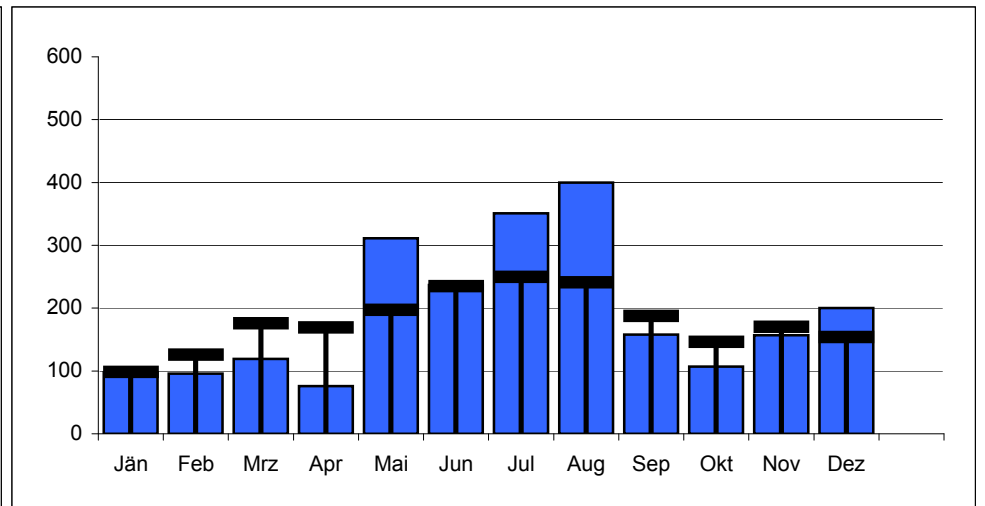
**Alberschwende 100842**



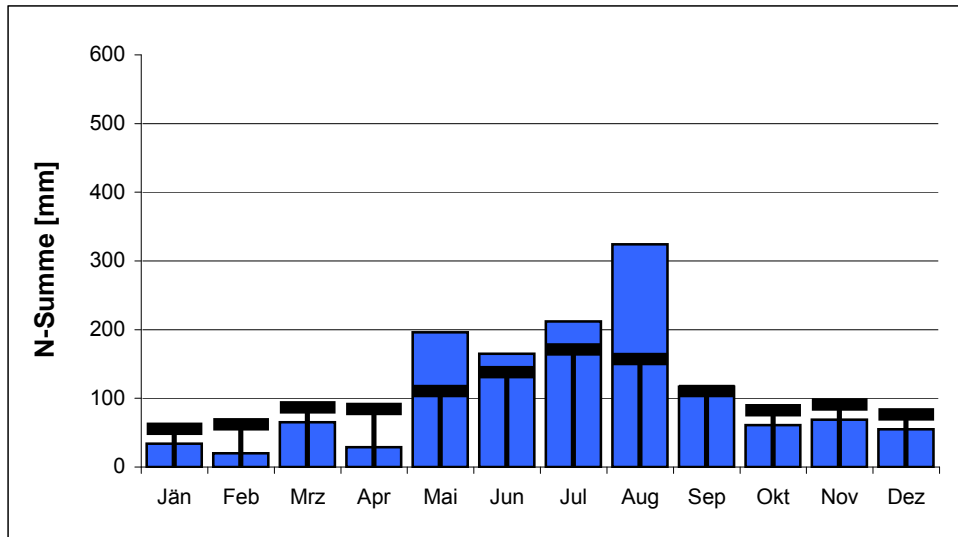
**Schönenbach 100651**



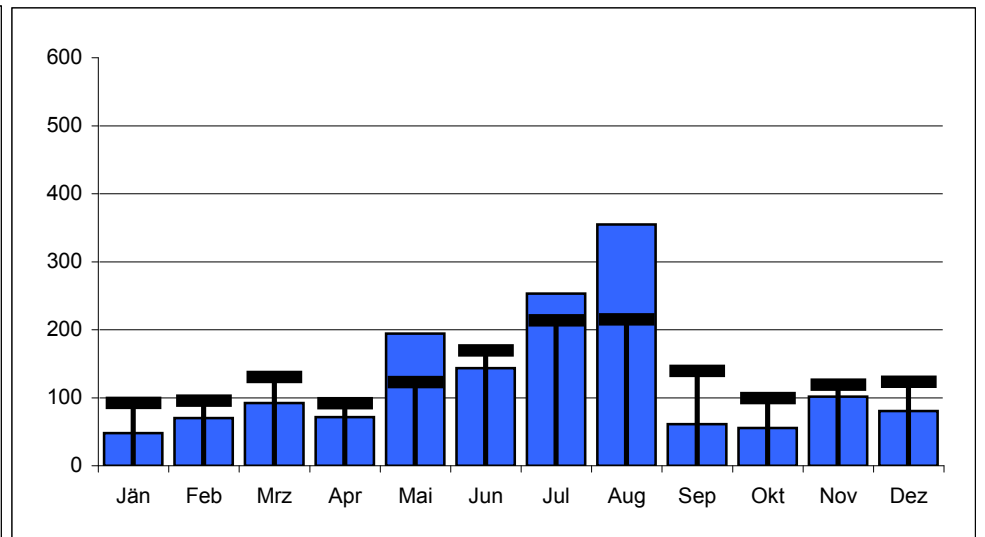
**Ebnit 100453**



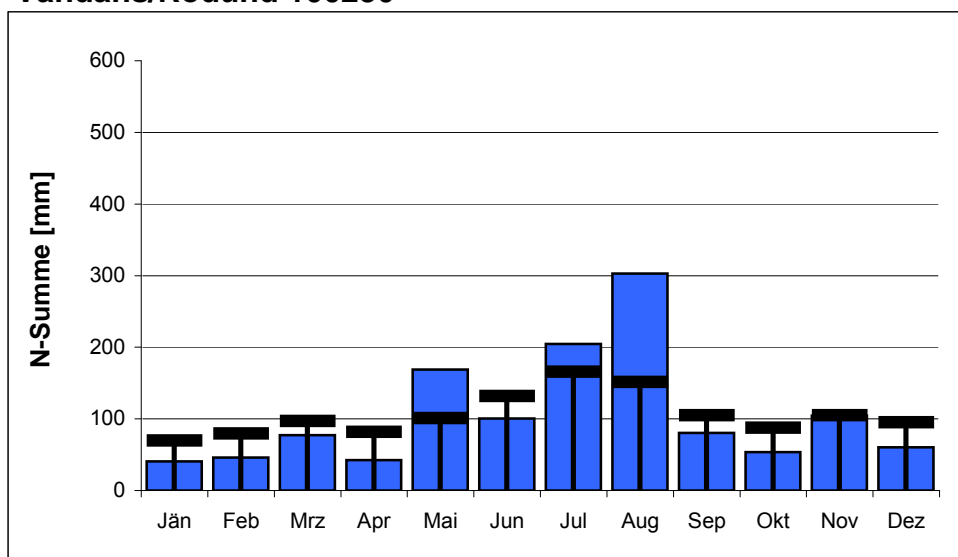
**Feldkirch 100396**



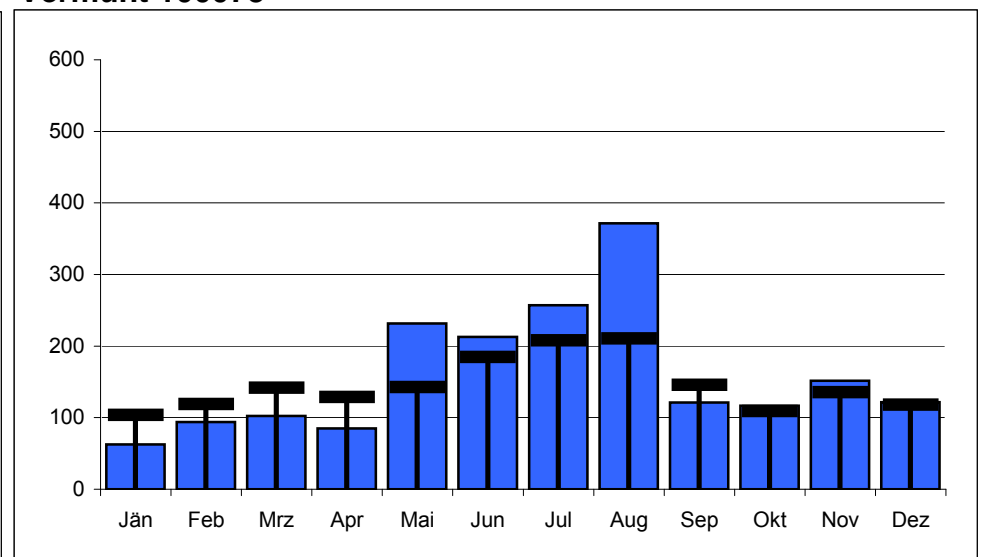
**Zürs 101113**



**Vandans/Rodund 100230**

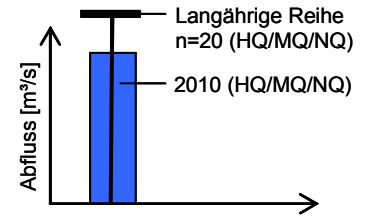


**Vermunt 100073**



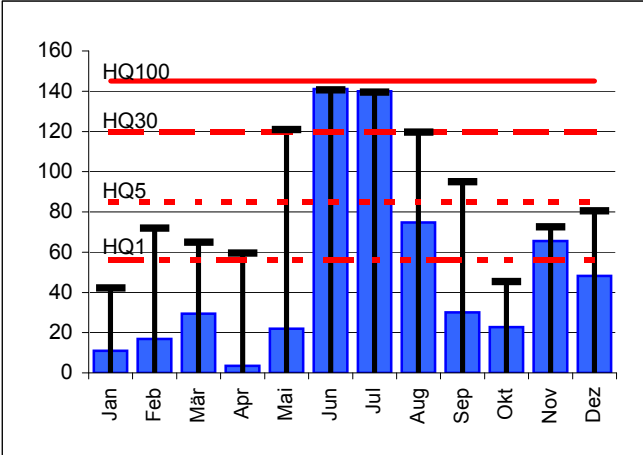
Station	Langjährige Reihen [m³/s] n=20 (1991-2010)						Werte 2010 [m³/s]			Abweichung [%]		
	NQ	MQ	HQ1	HQ5	HQ30	HQ100	NQ	MQ	HQ	NQ	MQ	HQ100
Leiblach, Unterhochsteg	0,08	3,27	56	85	120	145	0,471	4,05	141	+474%	+24%	-3%
Bregenzerach, Kennelbach	1,07	46,16	480	750	1.100	1.450	5,09	50,30	718	+376%	+9%	-50%
Dornbirnerach, Lauterach	0,24	6,93	120	180	270	325	1,24	7,99	176	+417%	+15%	-46%
Rhein, Lustenau	35	226	1180	1.800	2.600	3.200	51,40	233	898	+46%	+3%	-72%
Ill, Gisingen	3,58	65,40	240	405	590	820	6,34	66,00	284	+77%	+1%	-65%

Legende zu den Diagrammen

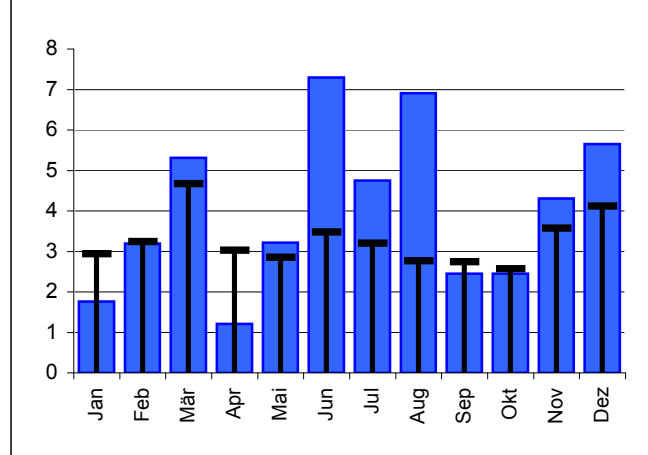


Leiblach, Unterhochsteg

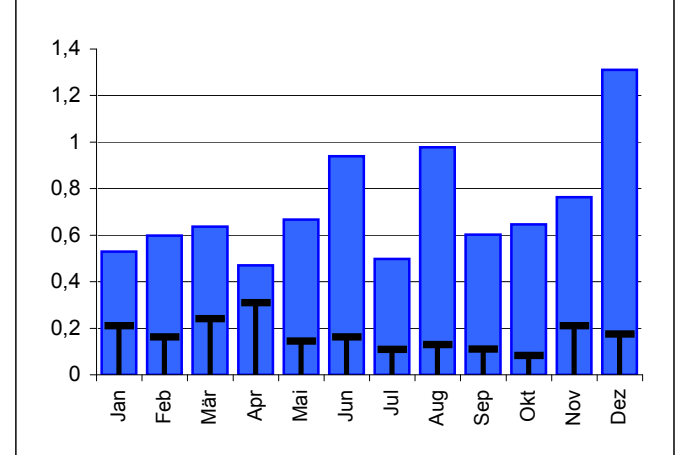
HQ



MQ

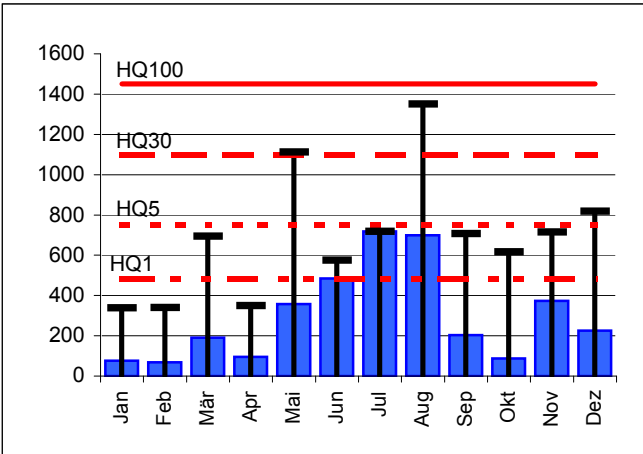


NQ

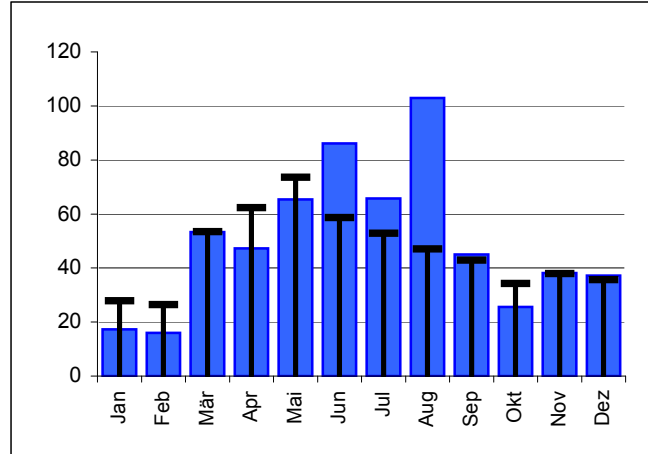


Bregenzerach, Kennelbach

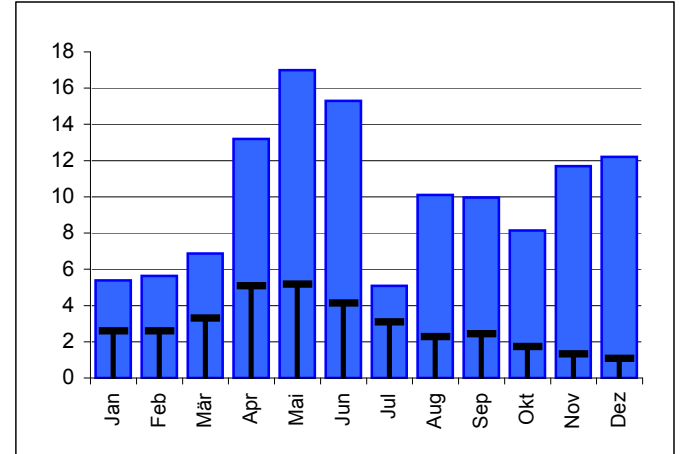
HQ



MQ

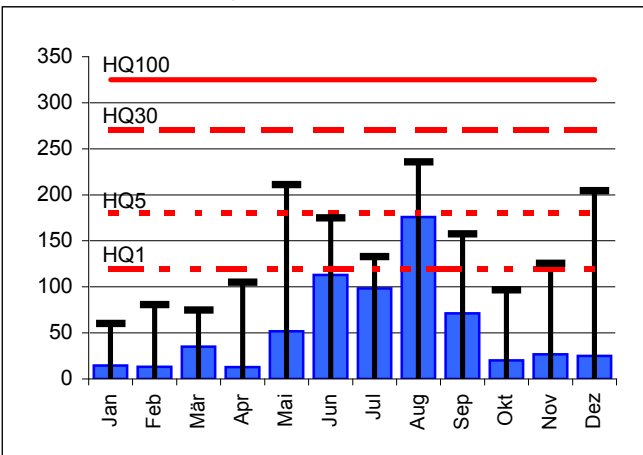


NQ

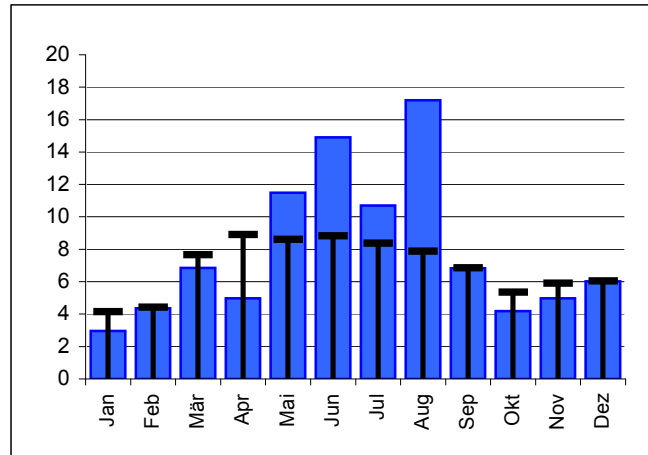


Dornbirnerach, Lauterach

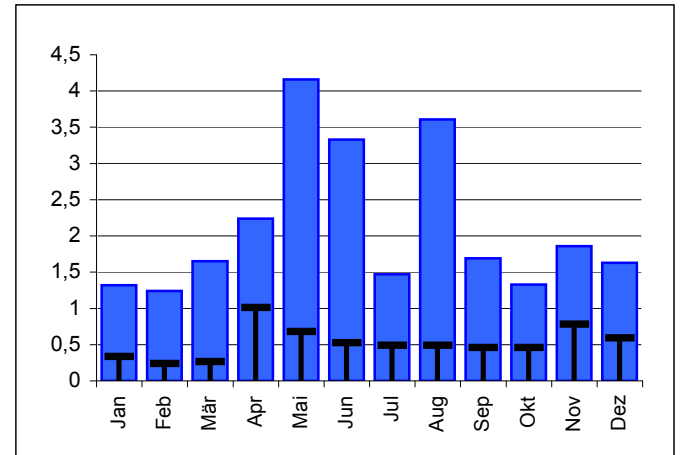
HQ



MQ

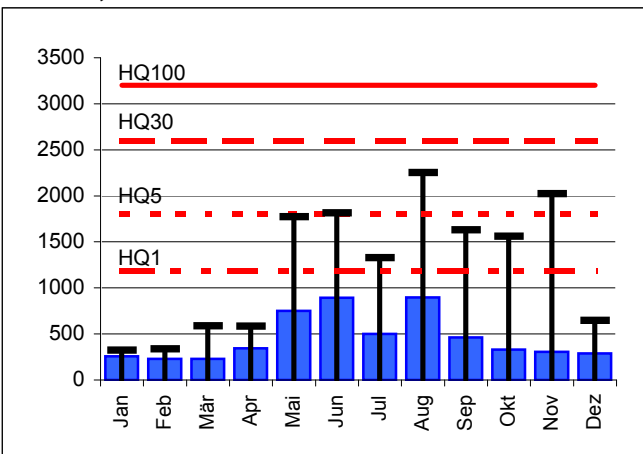


NQ

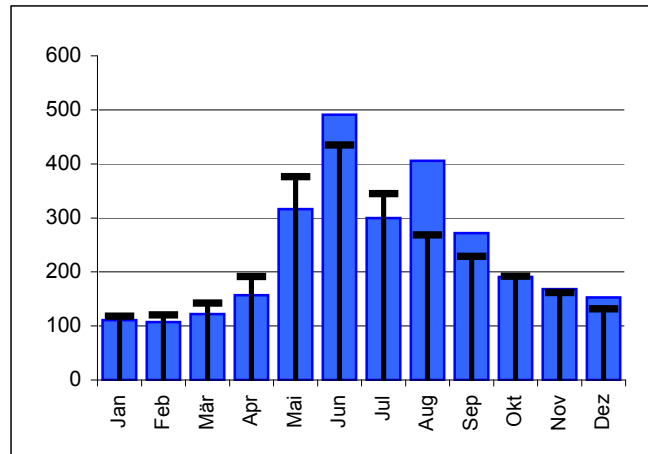


Rhein, Lustenau

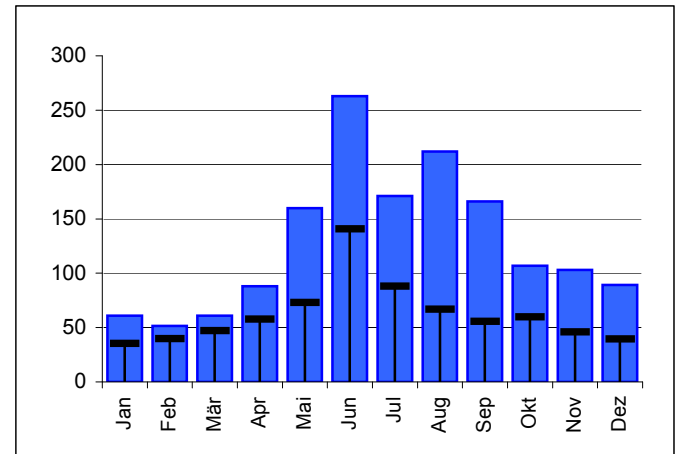
HQ



MQ

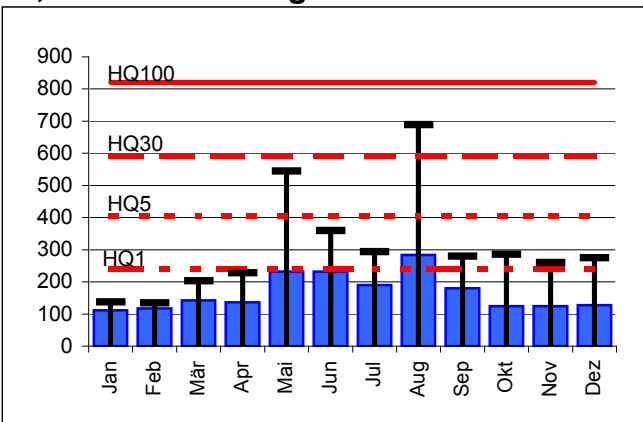


NQ

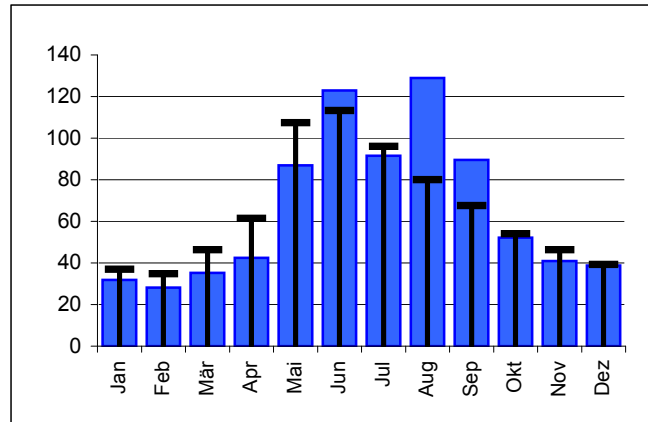


Ill, Feldkirch-Gisingen

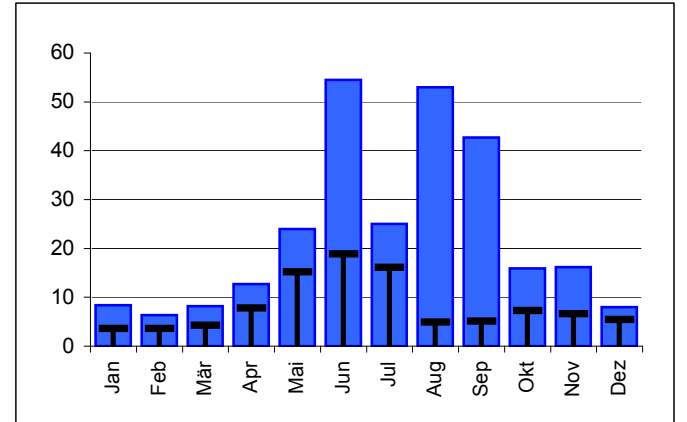
HQ



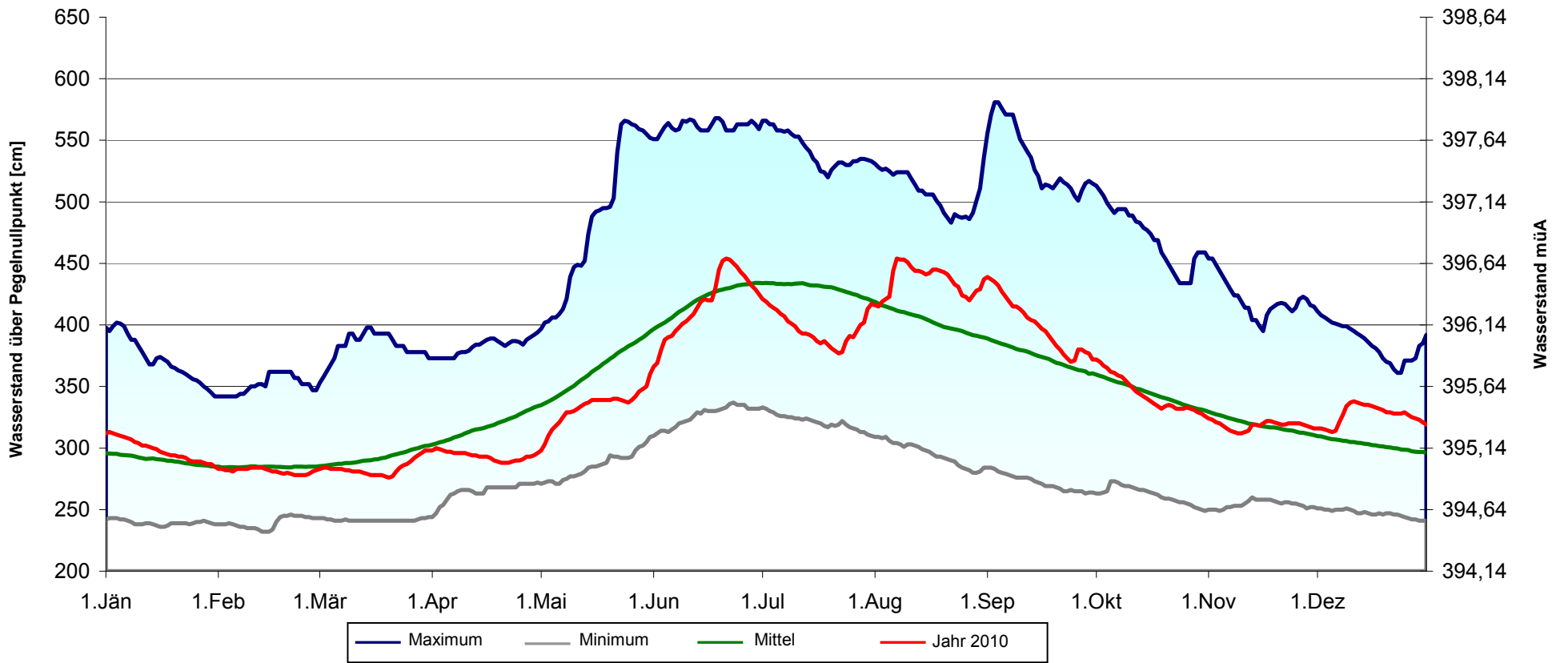
MQ



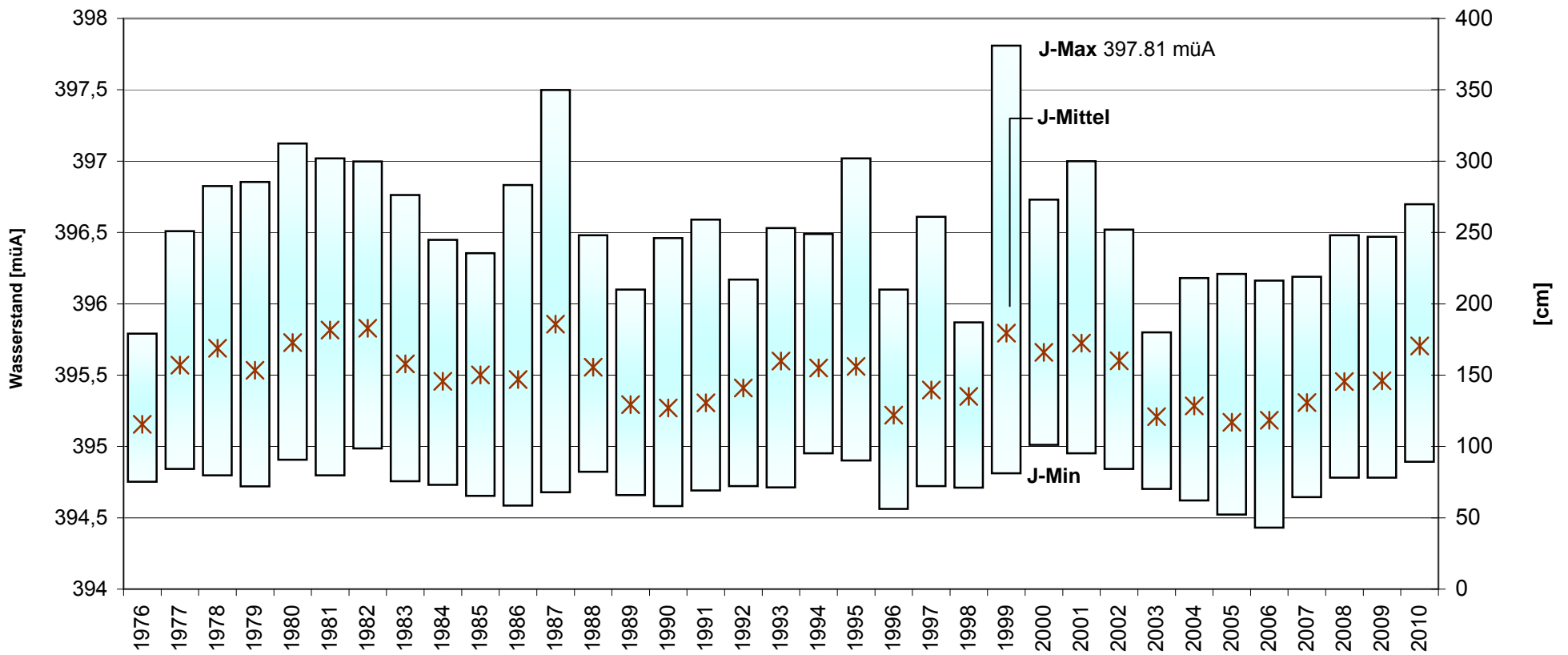
NQ



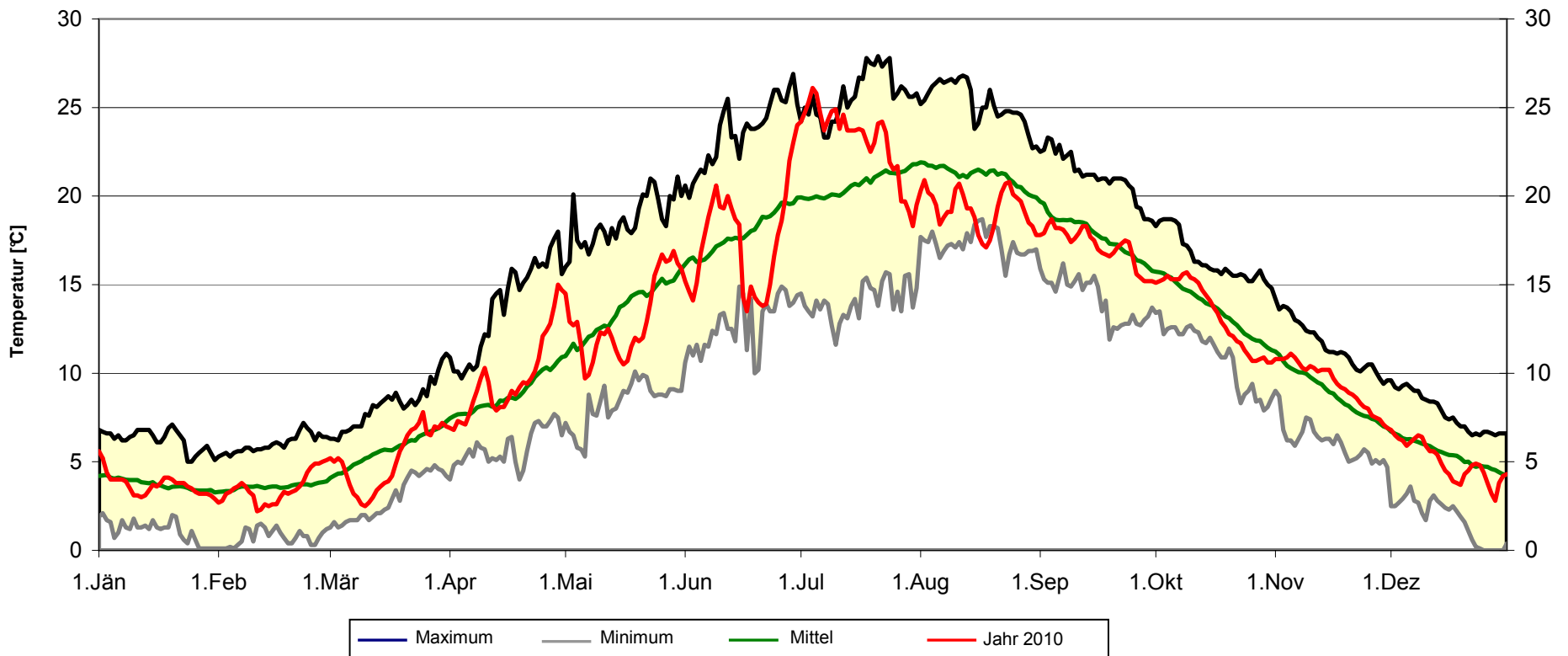
Wasserstandsbewegung von 1864 - 2007 (144 Jahre) - Pegelnullpunkt: 392,14 m. ü. Adria



Wasserstandsbewegung von 1976 bis 2010 (Jahresminimum -maximum und -mittelwert)

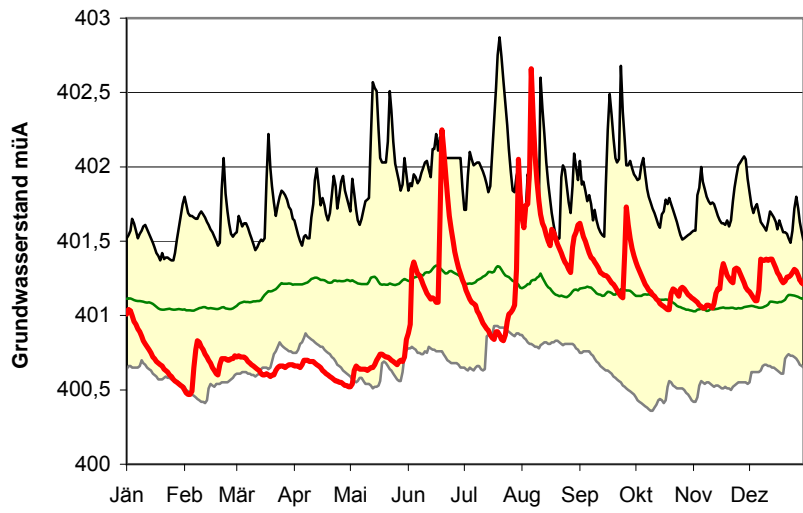


Wassertemperatur im Tagesmittel (Messpunkt 50 cm unter Wasser)  
Extremwerte und Mittel von 1976 - 2007 (31 Jahre)

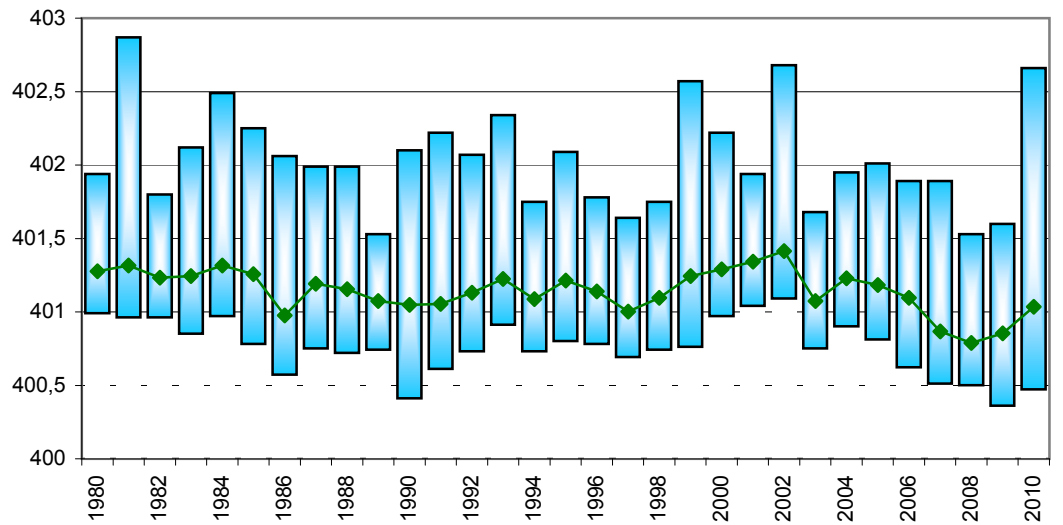
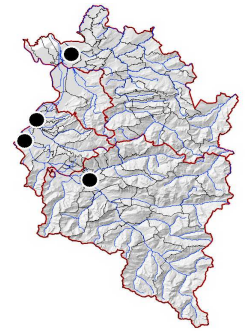
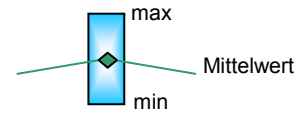


Verlauf Grundwasserstand 2010 mit Min-, Max und Mittelwerten über die gesamte Beobachtungsdauer

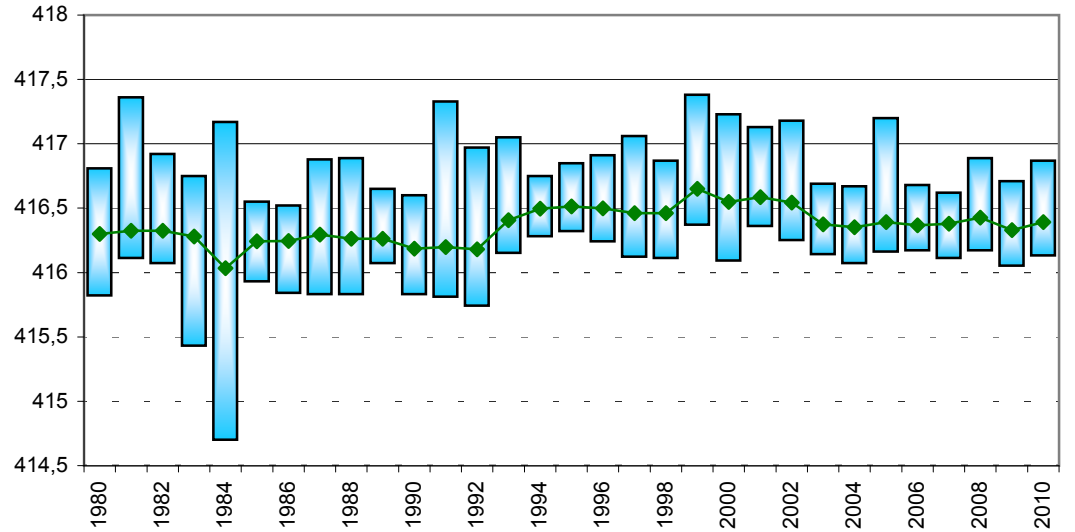
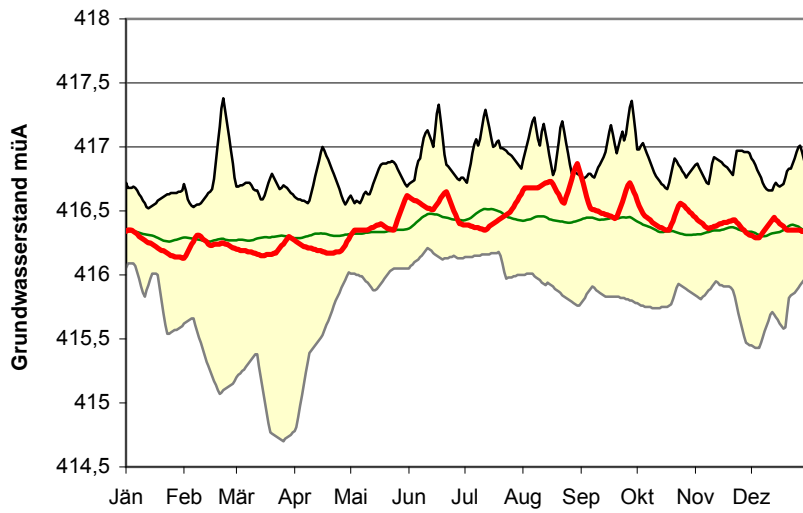
## Lauterach 50.2.10



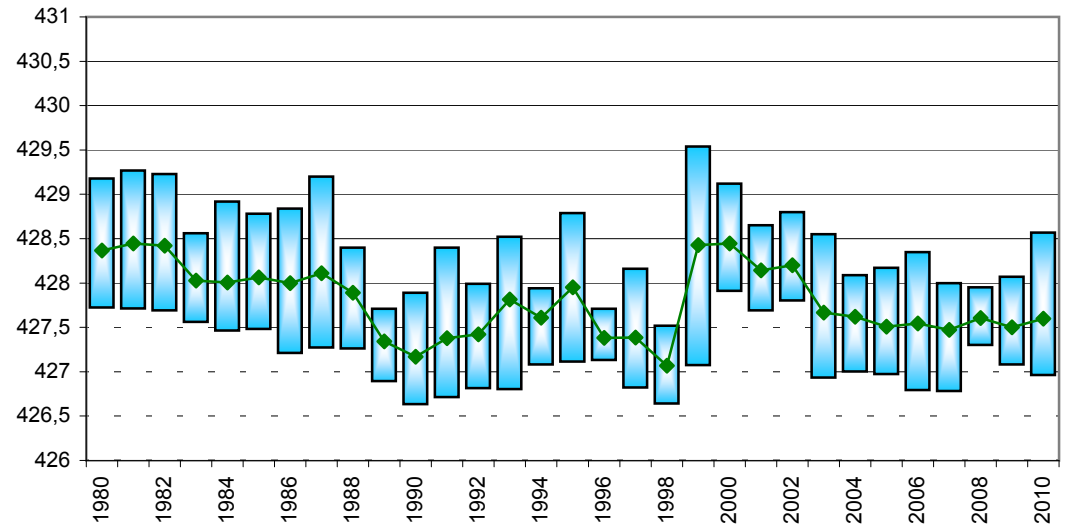
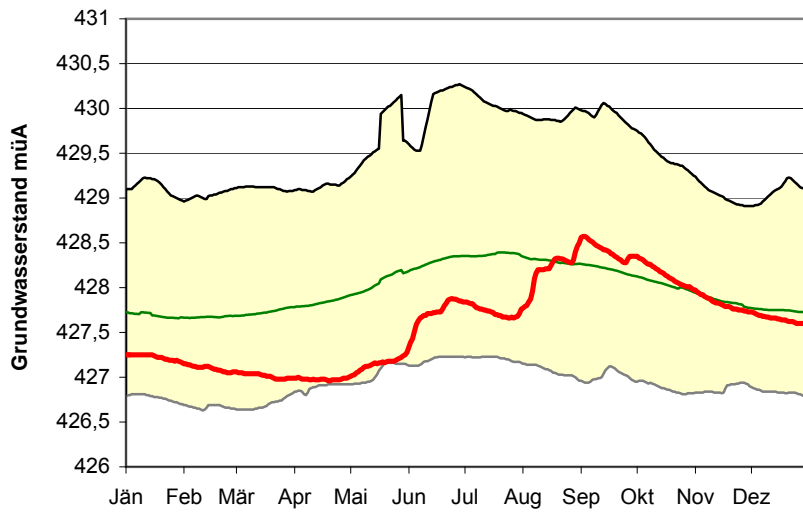
Langjährige Reihe (n=30)



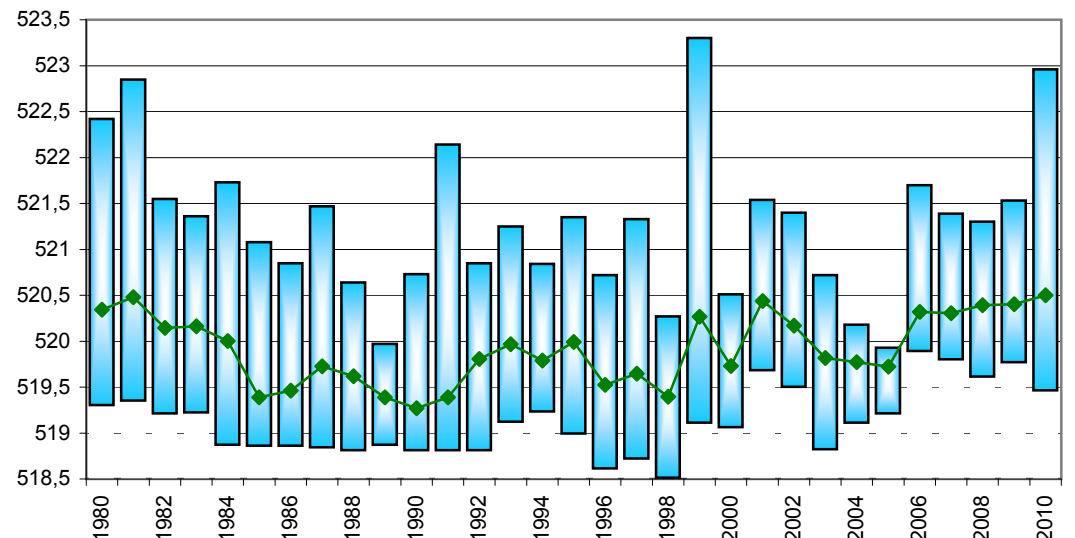
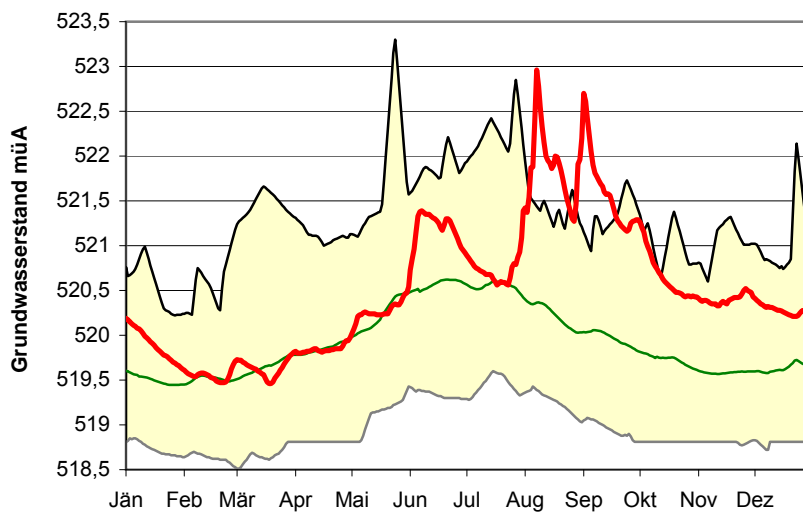
## Koblach 50.4.03A



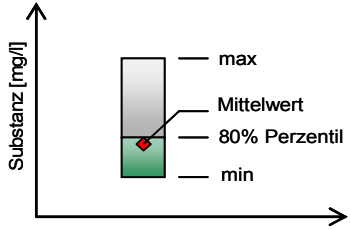
## Feldkirch Nofels 01.32.24



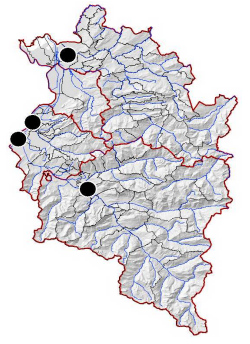
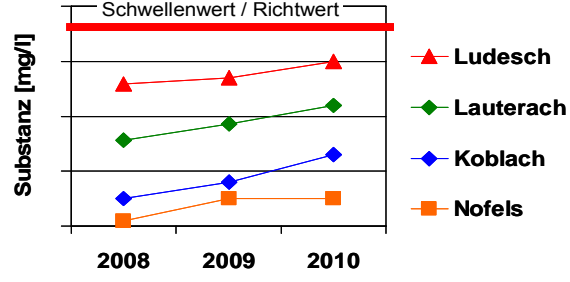
## Ludesch 06.36.08



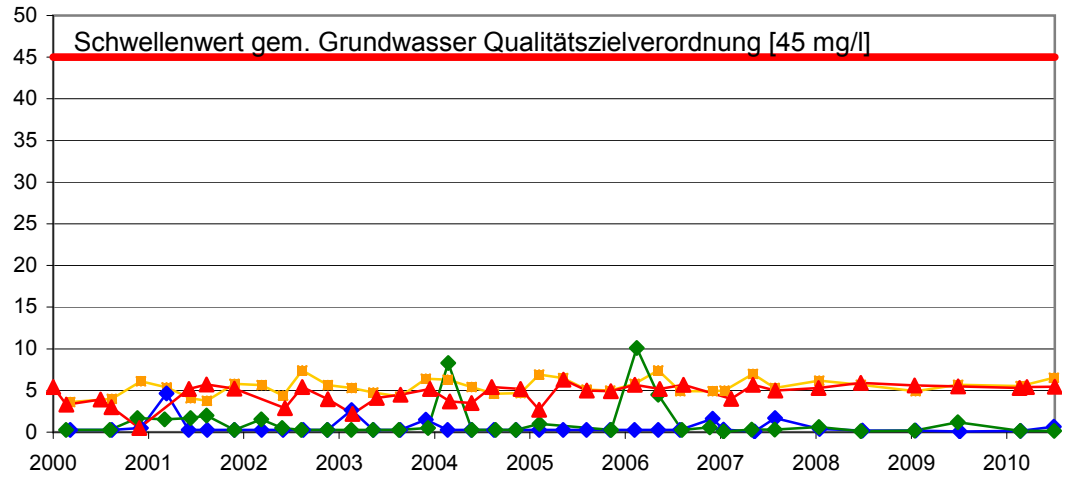
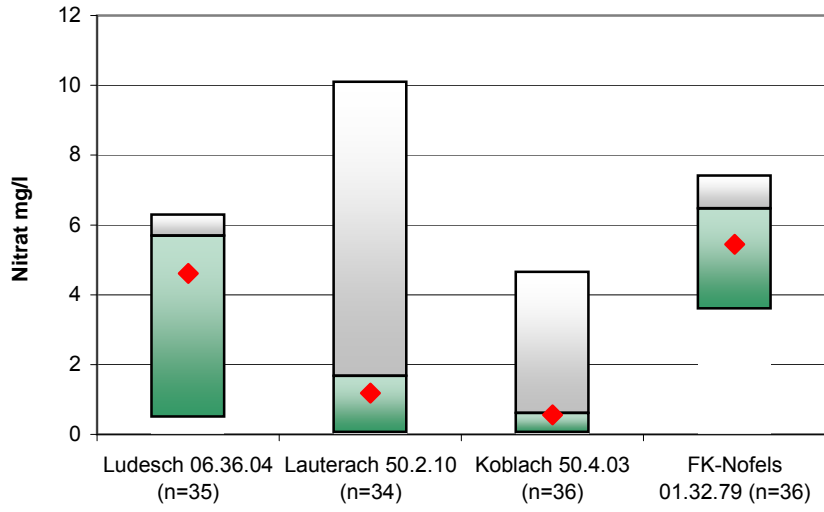
## Qualitätsuntersuchungen im Rahmen der GZÜV ab 2000



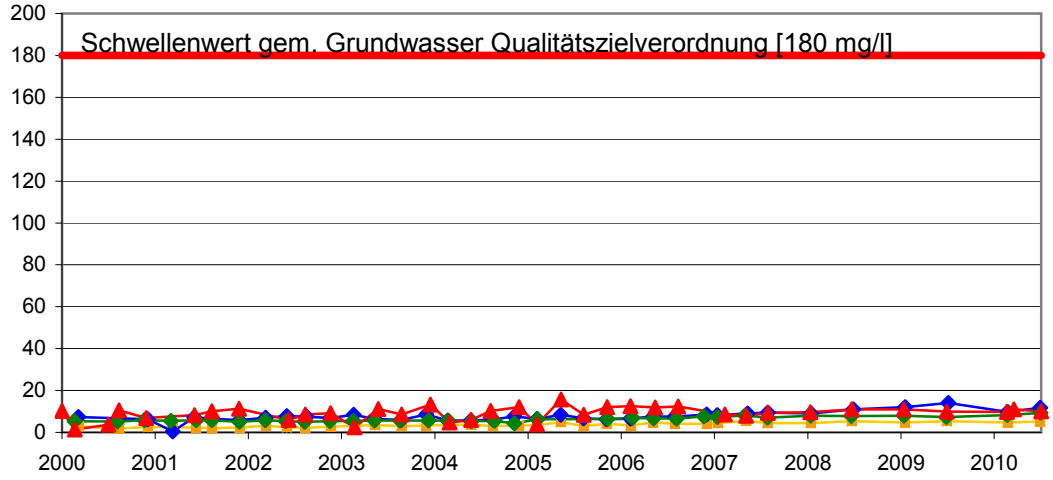
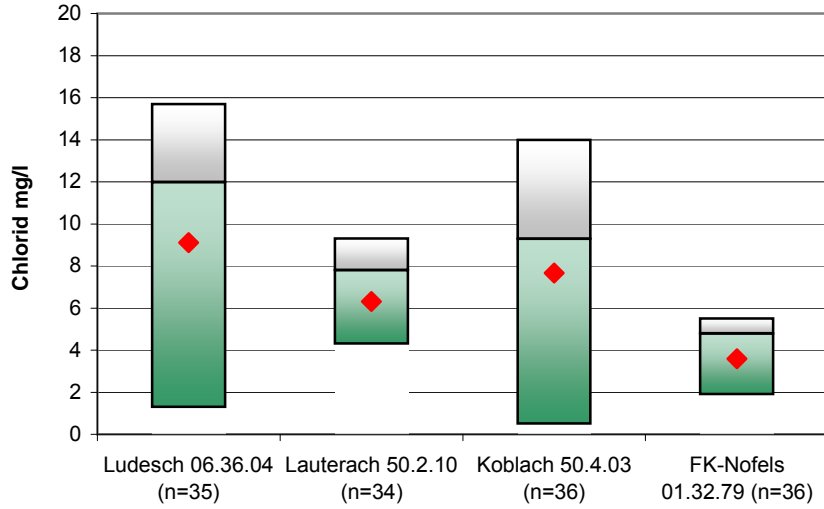
## Verlauf der gemessenen Werte ab 2000



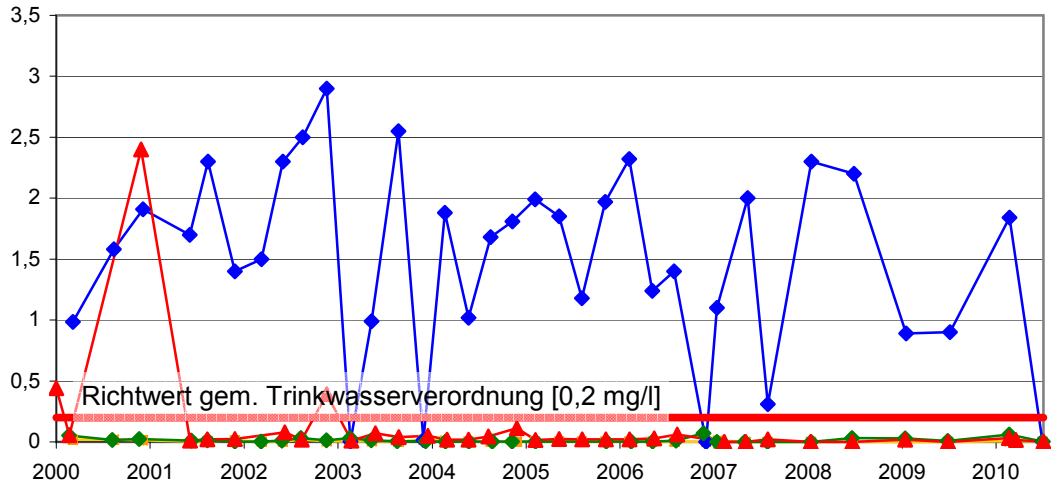
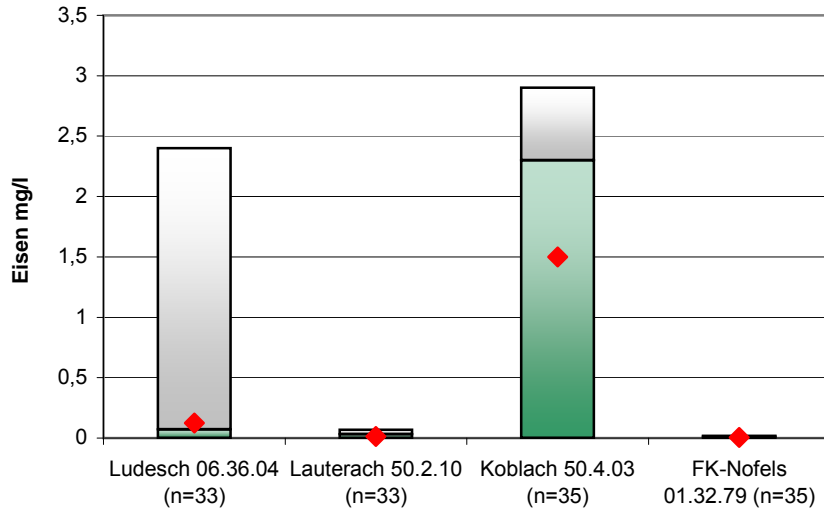
### Nitrat



### Chlorid



### Eisen



### Mangan

